

QUINTESSENCE — SABRE YACHTS



Builder: SABRE YACHTS

Year Built: 2008

Model: Cruiser

Price: PRICE ON APPLICATION

Location: United States

LOA: 34' 0" (10.36m)

Beam: 13' 3" (4.04m)

Min Draft: 3' 0" (0.91m)

Cruise Speed: 26 Kts. (30 MPH)

Max Speed: 29 Kts. (33 MPH)

Our experienced yacht broker, Andrey Shestakov, will help you choose and buy a yacht that best suits your needs **Quintessence — SABRE YACHTS** from our catalogue. Presently, at Shestakov Yacht Sales Inc., we have a wide variety of yachts available on our sale's list. We also work in close contact with all the big yacht manufacturers from all over the world.

If you would like to buy a yacht **Quintessence — SABRE YACHTS** or would like help answering any questions concerning purchasing, selling or chartering a yacht, please call **+1(954)274-4435**

TABLE OF CONTENTS

TABLE OF CONTENTS	2
SPECIFICATIONS	5
Basic Information	5
Dimensions	5
Speed, Capacities and Weight	5
Accommodations	5
Hull and Deck Information	5
Engine Information	6
DETAILED INFORMATION	7
Introduction	7
Interior Layout	7
Stateroom	8
Salon	8
Head	8
Helm Deck	9
Helm Station & Electronics	9
Deck Equipment	9
Electronics	10
Electrical Equipment	10
Engine System	11
Steering and Trim	11
Fresh Water System	12
Black Water	12
Safety	12
Optional Equipment on Boat	12
Exclusions	13
Disclaimer	13
PHOTOS	14

Bow	14
Port	14
Looking Aft	14
Helm Chair	14
Mate's seat foward	14
Galley Counter	14
Microwave	15
Helm Settee	15
Companionway to deck	15
Under stairs storage	15
Salon L-shaped sofa & coffee Table	15
TV and Refrigerator	15
Electrical Panel	16
Gen Set Hours	16
Hanging Locker	16
Queen Berth	16
Head & Sink	16
Stall Shower	16
Cockpit Hot & ColdShower	17
Cockpit Ice Maker	17
Cockpit Seating	17
Engine Room	17
Oil Changer	17
Port Engine	17
Starboard Engine	18
CONTACTS	19
Contact details	19
Telephones	19
Office hours	19

Address

19

SPECIFICATIONS

Basic Information

Category: Cruiser

Sub Category: Downeast

Model Year: 2008

Year Built: 2008

Country: United States

Cockpit: Yes

Dimensions

LOA: 34' 0" (10.36m)

Beam: 13' 3" (4.04m)

Min Draft: 3' 0" (0.91m)

Speed, Capacities and Weight

Cruise Speed: 26 Kts. (30 MPH)

Max Speed: 29 Kts. (33 MPH)

Displacement: 19000 Pounds

Water Capacity: 80 Gallons

Holding Tank: 30 Gallons

Fuel Capacity: 275 Gallons

Accommodations

Total Berths: 2

Sleeps: 4

Total Heads: 1

Hull and Deck Information

Hull Material: Fiberglass

Engine Information

Engines: 2

Manufacturer: Volvo

Model: D6

Engine Type: Inboard

Fuel Type: Diesel

DETAILED INFORMATION

Introduction

The owners are the second owners of this fine 34' Sabre Hardtop express. I sold this to the original owner who ordered it in 2007 for delivery the spring of 2008. The boat has been inside stored since new. The boat has been kept up very well. The owners have used it mostly for river cruises in Newburyport. This is a fairly low hour boat for a 2008. The engines, gen-set and systems have been well serviced.

This boat when new had over \$70,000 of electronics' installed at time of delivery, and more has been added. When at the dock or anchor you can watch TV on the Furuno monitors at the helm. This has the Furuno Navnet 3D system with the black box. There is a camera in the engine room, and has the Raymarine Life Tag man overboard system. This electronics system is something you would find on a 65 footer or larger. It has the best of electronics on it.

The cockpit comes with the optional ice maker and fold down rear seat. Even though this boat has not been fished it has the Burnewin holder system. These hold grills, rod holders, cleats, and more. The aft enclosure can be zipped off to really open up the helm area on a nice day. There is plenty of seating in the helm area as well as the cockpit. There is a companion seat across from the helm that will fold and push forward for extra seating around the table.

The galley is up behind the helm and has a large stainless sink, two burner cook top, microwave, AC/DC refrigerator and storage.

Down below, there is a L shaped settee that can convert into a double berth. There is a TV/DVD player, and another AC/DC refrigerator. There is a large enclosed head with a stall shower. The electric head is fresh water.

Moving forward there is a center line walk around berth, with storage all around. This is a large area for a couple or when you have one or two overnight guests, pull out the settee, pull the curtain, and you sleep four in the cabin. This beautiful 34 will not be on the market long so make your appointment today.

Interior Layout

- Ultra Leather Upholstery (Ostrich Swiss Cafe)
- Accord shades on all openings
- Corian Countertop in Head (Prairie)
- Custom Sabre Coffee Table in front of Settee w/storage under
- Larger than standard LCD TV in cabin w/DVD
- AC/DC refrigerator
- L-Shaped Settee that converts into a Double Berth

- Plenty of storage in Drawers, Hanging Locker, Lockers, Under Bunk and Settee
- VHF Radio in Cabin w/Full Function Remote at helm
- Clarion CD/AM/FM Stereo with remote at the helm

Stateroom

- Large Stateroom forward w/Custom Privacy Curtain
- Centerline Walk-Around Queen Berth w/Upgraded Memory Foam
- AC/Heat
- Plenty of Storage , Including under the berth
- (4) Drawers under berth'
- Large hanging locker, cedar lined w/cedar shelf and closet pole
- Upper enclosed shelves w/storage behind
- Teak and Holly sole
- Soft headliner panels
- Privacy curtain and curtain track
- Dimmer Light Switch

Salon

- L shaped settee w/4 1/2" foam cushion
- Ultra leather upholstery with blue piping
- Storage under settee through top
- Storage in companionway step and also underneath.
- (2) Enclosed lockers outboard w/open shelf and removable fiddle
- Recessed master AC/DC breaker panel facing FWD on aft bulkhead behind cherry doors
- AC/DC refrigeration w/cherry plywood door insert
- LCD TV w/DVD player mounted on swivel bracket
- Clarion CD/FM/AM stereo system
- Sound deadening headliner panels

Head

- Stainless sink w/faucet
- Separate shower stall w/circular acrylic door
- Hot and Cold pressure water
- Electric shower sump pump
- Storage lockers
- Soap dispenser in counter
- Solid surface counter w/bull nose
- Starboard shower grate

- Wood trimmed mirror over sink and mirror in top of passageway door
- Ventilation blower
- Incremental tank gauge for holding tank
- Shower with teak seat and floor

Helm Deck

- Storage and drawers beneath settee
- Raised L-settee to port w/custom Stidd convertible backrest for mate's seat
- Wide jump seat w/storage below, aft of helm seat
- Stidd helm seat
- Cherry wood in helm area
- Molded in air conditioning ports on FWD end of each dash
- Sliding companionway door and hatch system
- Chart locker cover w/clear cover
- Helm deck air condition

Helm Station & Electronics

- Engine start/stop control panel
- Digital engine gauge panel
- Water in fuel warning light
- Triple windshield wiper with washers - center opening – Power window
- Ritchie compass (back lit)
- Switch controls for horn, running lights, anchor light, engine room blower and opt. equipment
- Tilting navigational electronics helm pod
- Teak decking on helm deck
- Two overhead opening hatches with bug and sun screens
- Sliding side windows
- Custom inside helm deck curtains.

Deck Equipment

- Searchlight w/Remote
- Mast for Electronics
- Dark Blue Hull Color
- Contrasting Anti-Skid Color
- Sidepower Bow Thruster
- Teak Decking on Swim Platform
- Swim Ladder

- Transom Door
- Ice maker in cockpit cabinet
- Windlass , with foot pedals on deck and remote at helm,
- Fresh & Salt Water Wash Down in Anchor Locker
- Stainless Plow Anchor
- Salt water washdown in cockpit
- Plow anchor
- Tender brackets on swim platform

Electronics

- Furuno Navnet 3D Black Box
- (2) Furuno 12" Color Displays, and you can watch TV on them at the dock
- Furuno Digital Sounder for Fish Finder
- Furuno 4 KW 3.5 Open Digital Array
- Furuno GPS Antenna
- KVH M3 Series Satellite Antenna Dome
- High Definition Receiver for KVH
- Simrad AP 26 Auto Pilot
- Clarion CD/FM/AM stereo system, with plug to Play smart phones
- 8' Digital Antenna VHF
- Digital Antenna AM/FM
- Icom VHF Radio in Salon
- Icom Command Mic 3 at Helm
- Furuno Sirius Weather Satellite Receiver
- Furuno Ethernet Hub
- Speco Camera in engine room
- 40-Watt Hailer Horn
- Northstar Depth Sounder
- TV in Cabin w/DVD

Electrical Equipment

- 120 VAC Electrical System
- (2) 30 Amp. AC shore power inlets and 50 ft. cord
- Galvanic isolator w/monitoring system
- Illuminated main circuit breaker distribution panel
- 110V Outlets in each cabin and (1) in engine room
- All galley and head receptacles are GFI protected
- Professional Mariner 50 Amp, 3-bank battery charger
- Onan 9 KW generator 58 hours
- Inverter/charger

- Reverse cycle air conditioning below deck 12K BTU
- 12 VDC Electrical System
- (3) 1000 CCA engine start batteries
- 12V Outlet at helm
- (2) 4D AGM deep cycle ship's service batteries
- Battery management panel located in companionway stairs - emergency crossover switch, ships power and starting battery switches
- Illuminated main circuit breaker distribution panel w/battery condition gauge
- Additional 12 volt outlets - mate seat, above cabin hanging locker
- Lighting - Danish cabin reading lights, cantalupi halogen in overhead, halogen at bar, courtesy lights
- Dimmer switch's throughout
- Search light w/controls
- Tinned wire throughout

Engine System

- Twin Volvo D6 370hp diesel engines – 499 Hours
- (2) engine displays
- Fresh water cooled (FWC)
- 1 3/4" Stainless steel shaft
- PSS drip-less shaft seals
- Manganese bronze strut cutlass bearing
- Four blade Nibral propellers to ISO class S
- Engine room floor w/teak grate
- Groco bronze raw water intake strainers w/quick release plug
- Engine room blower
- Engine room vent ducts on deck side w/stainless steel grill
- White gelcoated engine room
- White Mylar faced foam noise 1 barrier
- Reverso oil changing system
- Seawater cooled 6" side exhaust system
- Racor fuel filters
- Fuel polishing system

Steering and Trim

- Teleflex hydraulic steering system
- Tilting Teleflex helm pump
- Vetus simulating MOG steering wheel with "Sabre" inset
- Twin bronze rudders w/adjustable tie-rod
- Twin stainless

Fresh Water System

- Water capacity approx. 80 gals. (Single Tank)
- 11 gal. Hot-Water heater off 110 V and engine
- Hot and Cold water pressure system - 12V
- Fresh water wash down in anchor locker
- Hot and Cold transom shower
- Shore water inlet

Black Water

- Incremental tank gauge on head
- Polyethylene holding tank w/30 gal. capacity
- Jabsco quiet flush head
- Macerator pump on holding tank to overboard sea valve
- Deck pipe for pump out

Safety

- Fire extinguishers - (2) at 2 1/2 lbs.
- Bonding system to safeguard against galvanic corrosion
- Automatic fire extinguishing discharge system w/override
- (3) Automatic 12 V electric bilge pumps

Optional Equipent on Boat

- Lewmar V3 windlass rope/chain windlass
- Composite radar mast
- Searchlight with remote
- Teak decking on helm deck
- Teak decking on swim platform
- Electric opening center windshield
- Clarion CD/AM/FM stereo system with (4) speakers and remote pad
- Larger TV in cabin, custom
- 12VDC outlet
- 12VDC dimmer switches for lighting
- Dark Blue hull color
- Anti-skid color deck
- Accord shades for opening ports
- Helm deck window curtains
- Upgrade upholstery – Ultra-leather

- Upgrade engines to Volvo D6 370hp – 499 hrs
- Side-Power bow thruster
- Reverso oil changing system
- Inverter/charger
- Fuel polishing system
- Below deck air conditioning w/ reverse cycle heat
- Helm deck air conditioning w/ reverse cycle heat
- Incremental tank gauge on head holding tank
- Groco bronze engine intake strainers w/ quick release adapters
- Hot & cold transom shower
- Shore water inlet hook-up
- Salt water wash down system fore & aft
- Fresh water wash down in anchor locker
- Aft canvas enclosure for helm deck area w/ zip-up door and window
- Cockpit fold down transom seat
- Ice maker in cockpit
- Tender brackets on swim platform
- Burnewin rod/ grill/ cleat holders in cockpit
- Shower with teak seat and floor
- Memory foam on forward berth

Exclusions

Owner's personal belongings.

Disclaimer

The Company offers the details of this vessel or yacht in good faith but cannot guarantee or warrant the accuracy of this information nor warrant the condition of the vessel. A buyer should instruct his representatives, agents, or his surveyors, to investigate such details as the buyer desires validated. This vessel or yacht is offered subject to prior sale, price change, or withdrawal without notice.

PHOTOS

Bow



Port



Looking Aft



Helm Chair



Mate's seat foward



Galley Counter



Microwave



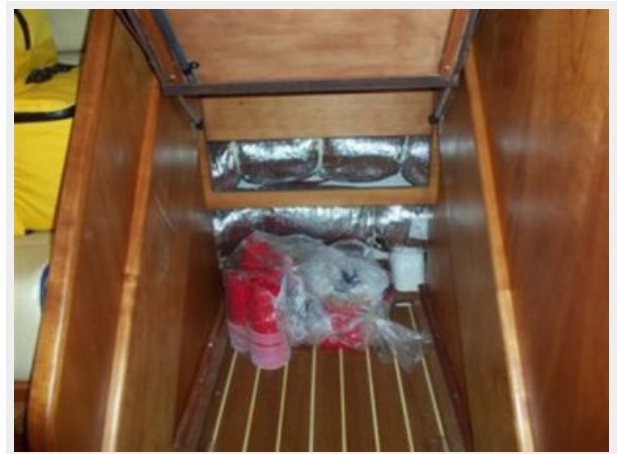
Helm Settee



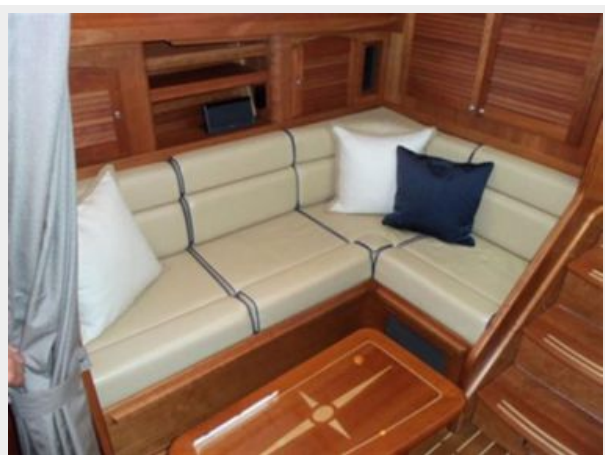
Companionway to deck



Under stairs storage



Salon L-shaped sofa & coffee Table



TV and Refrigerator



Electrical Panel



Gen Set Hours



Hanging Locker



Queen Berth



Head & Sink



Stall Shower



Cockpit Hot & Cold Shower



Cockpit Ice Maker



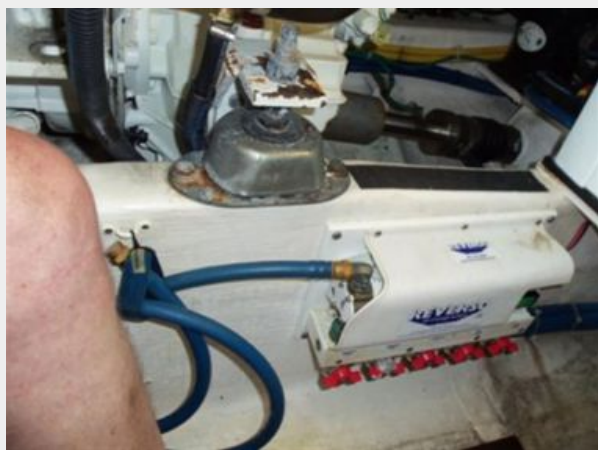
Cockpit Seating



Engine Room



Oil Changer



Port Engine



Starboard Engine



CONTACTS

Andrey Shestakov, leading yacht broker of the sales department of Shestakov Yacht Sales Inc. Shestakov Yacht Sales Inc., the official representative of the Miami/Fort Lauderdale FL headquarters.

Contact details

Email: andrey@shestakovyachtsales.com

Web: shestakovyachtsales.com/en/

Telephones

USA: +1(954)274-4435

Office hours

Monday – Saturday: **9:00 - 21:00** EDT

Sunday: **closed**

Address



Harbour Towne Marina, 850 NE 3rd St,
STE 213, Dania, FL 33004