

MARKER 18 — MAINSHIP



Builder: MAINSHIP

Year Built: 1999

Model: Motor Yacht

Price: PRICE ON APPLICATION

Location: United States

LOA: 43' 0" (13.11m)

Beam: 15' 6" (4.72m)

Min Draft: 3' 8" (1.12m)

Max Draft: 3' 8" (1.12m)

Cruise Speed: 14 Kts. (16 MPH)

Max Speed: 17 Kts. (20 MPH)

Our experienced yacht broker, Andrey Shestakov, will help you choose and buy a yacht that best suits your needs **MARKER 18 — MAINSHIP** from our catalogue. Presently, at Shestakov Yacht Sales Inc., we have a wide variety of yachts available on our sale's list. We also work in close contact with all the big yacht manufacturers from all over the world.

If you would like to buy a yacht **MARKER 18 — MAINSHIP** or would like help answering any questions concerning purchasing, selling or chartering a yacht, please call **+1(954)274-4435**

TABLE OF CONTENTS

TABLE OF CONTENTS	2
SPECIFICATIONS	5
Overview	5
Basic Information	5
Dimensions	5
Speed, Capacities and Weight	5
Accommodations	6
Hull and Deck Information	6
Engine Information	6
DETAILED INFORMATION	7
Walkthrough	7
Foredeck	7
Forward Trunk Cabin	7
Side Decks	8
Aft Cockpit	8
Swim Platform	8
Flybridge	8
Flybridge Electronics	9
Lower Helm	10
Galley to Port	10
Main Salon	10
Master Stateroom	11
Master Head	12
Forward Stateroom "V" Berth	12
Starboard Forward Guest Head	12
Port Twin Berth - Guest Stateroom	13
Aft Deck / Trunk Cabin	13
Mechanical	14

Fresh Water System	14
Head System	14
Air Conditioning	15
Electrical	15
Additional	15
Broker's Comments	15
Exclusions	16
Exclusions	16
Disclaimer	16
PHOTOS	17
Foredeck	17
Foredeck	17
Side deck	17
Trunk Cabin / Aft deck	17
Cockpit	18
Trunk Cabin / Aft deck	18
Transom	18
Flybridge	18
Flybridge	18
Flybridge	18
Flybridge	19
Lower Helm	19
Galley	19
Galley	19
Galley	19
Galley	19
Main Salon	20
Galley	20
Main Salon	20

Main Salon	20
Main Salon	20
Main Salon	20
Master Stateroom	21
Master Stateroom	21
Master Stateroom	21
Master Stateroom	21
Master Stateroom Head	21
Master Stateroom Head	21
Forward Companionway	22
Forward Guest Stateroom	22
Forward Guest Stateroom	22
Forward Guest Stateroom	22
Forward Guest Head	23
Forward Guest Head	23
Port Guest Stateroom	23
Port Guest Stateroom	23
Layout	24
CONTACTS	25
Contact details	25
Telephones	25
Office hours	25
Address	25

SPECIFICATIONS

Overview

"Marker 18" was purchased new by her present original owners. She has been maintained exceptionally well, cosmetically and mechanically by her knowledgeable owners. An opportunity has presented itself to purchase a highly desirable US built family motor yacht that will make a knowledgeable buyer, a dependable quality motor yacht. This will not last, a must see!

Basic Information

Category: Motor Yacht

Sub Category: Aft Cabin

Model Year: 1999

Year Built: 1999

Country: United States

Vessel Top: 2353

Fly Bridge: Yes

Dimensions

LOA: 43' 0" (13.11m)

Beam: 15' 6" (4.72m)

Min Draft: 3' 8" (1.12m)

Max Draft: 3' 8" (1.12m)

Speed, Capacities and Weight

Cruise Speed: 14 Kts. (16 MPH)

Cruise Speed Range: 450

Max Speed: 17 Kts. (20 MPH)

Max Speed Range: 450 Kts.

Displacement: 36000 Pounds

Gross Tonnage: 18 Pounds

Water Capacity: 250 Gallons

Holding Tank: 50 Gallons

Fuel Capacity: 500 Gallons

Accommodations

Total Cabins: 3

Total Berths: 5

Sleeps: 6

Total Heads: 2

Hull and Deck Information

Hull Material: Fiberglass

Deck Material: Fiberglass

Hull Configuration: Semi-Displacement

Hull Designer: Mainship

Exterior Designer: Mainship

Interior Designer: Mainship

Engine Information

Engines: 2

Manufacturer: Caterpillar

Model: 3116

Engine Type: Inboard

Fuel Type: Diesel

DETAILED INFORMATION

Walkthrough

Entering the boat from the swim platform, you walk through the transom door into the cockpit and then walk onto either side deck or step down into the master stateroom through the private access door. From either side deck, you can step up onto the sundeck and then step up to the flybridge or walk further forward and walk into the salon. From port, you walk into the galley forward and into a U-shaped settee port aft, a desk starboard aft, sofa to starboard and the lower helm starboard forward. Forward there is a bow guest stateroom and to port a second guest twin berth stateroom and the guest head is to starboard. The master stateroom is aft and is accessed from the salon or cockpit. The engine room is accessed through a salon sole hatch or forward through lift-up stairs.

Foredeck

- 4' Fiberglass bow pulpit
- Anchor fortress Danforth style aluminum with 100' x 1/4" anchor chain
- Anchor windlass / Lewmar 12v with up and down deck switches
- Anchor rode 3/4" Nylon x 150' with 6" x 1/4" leader chain
- Pulpit 12" stainless steel cleat
- Anchor locker with divider board
- Bow / side deck railing 1 1/4" Aluminum
- Fiberglass nonskid deck
- Bow cleats port and starboard 12" stainless steel
- Fresh water wash down
- 50 AMP Marinco inlet with 50' x 50 AMP shore cord
- Shore cord inlet breaker with waterproof cover
- Phone / cable TV inlet Marinco
- Fore and side decks raised bulwarks 14"
- Bow flag staff 22" stainless steel
- Courtesy 12v deck light

Forward Trunk Cabin

- Ventilation / escape hatch 23" x 23" with opaque skylight / guest stateroom
- Port and starboard ventilation hatches 17" x 12" with opaque skylights
- Fiberglass non-skid deck

Side Decks

- Raised bulwarks 28"
- Courtesy 12v deck light at port and starboard sliding cabin doors
- Port and starboard 1/4 to 3/4 cleats 12" stainless steel
- Port and starboard engine room air intakes inside of bulwarks
- Mid-ship and aft port and starboard boarding gates
- Starboard side fresh water tank fill
- Deck drains fore and aft
- Port and starboard diesel fuel fills with spill lip
- Cabin side grab rails
- Custom 3 step vertical Aluminum boarding ladder (removable with storage)
- Port and starboard cabin overhand with collapsible boat hooks

Aft Cockpit

- 26" deep with fiberglass non-skid deck
- 35" high bulwarks with transom door
- Access hatch to bilge / rudder area
- Port and starboard deck drains
- Fresh water tank deck fill
- Dockside water inlet with pressure regulator
- 50 AMP Marinco shore power inlet with breaker
- Cable / TV inlet Marinco
- Sliding access door to master stateroom 26" wide opaque Lexan
- Port and starboard stern mooring cleats 12" stainless steel
- Cover matching blue sunbrella for aft sliding cockpit door
- Recessed fresh water hot and cold shower with cover
- Stern flag staff 45" teak with ensign

Swim Platform

- 36" fiberglass non-skid
- Fiberglass step built-in with storage
- (3) step fold down swim ladder
- Transom aluminum grab rail with (2) rod holders

Flybridge

- Bimini top with 4 side enclosure with (4) U Zips 40 Mil Eisenglass (New March 2014)
- Windscreen venture style tinted plexiglass with aluminum grab rail

- Flybridge helm on centerline / hinged for easy access for maintenance with cover
- Helm wheel 15" stainless steel with adjustable tilt wheel
- Sea star hydraulic steering
- Hynautic clutch and throttles
- Port and starboard drink holders
- Binocular holder
- Helm seat with arm rest, foot rest, fore and aft side, removable cushions
- Port and starboard companion seats with arm rests and swivel
- Starboard built-in bench seat with storage below, cushions with backrest
- Starboard side drink holder
- Port side built in "L" shape seating with storage below, cushions with backrest
- Port side drink holder
- Fiberglass cocktail / dining table fiberglass with recessed drink holders
- Fiberglass non-skid deck
- (3) Matching throw pillows dark blue sunbrella 19" x 19"
- Access steps from aft trunk cabin (3) steps with grab rails
- Bimini top 1" stainless steel frame with fore and aft solid supports
- Additional 18" x 10" drink cooler - starboard removable with chocks
- Additional 24" x 14" drink cooler - port removable with chocks

Flybridge Electronics

- VHF Uniden ES / UM625 C1
- Depth finder standard digital
- Chart plotter Garmin 2010C with cover
- Compass Ritchie 4" magnetic with cover
- Chart / cigarette lighter 12v
- Trim tabs Bennett
- Synchronizer Glendinning automatic
- Horns electric / air dual trumpet
- Windlass remote raiser / lower switch
- TV Coby Remote control color with cover 12"
- Stereo AM/FM with CD Westmarine with (4) 6" speakers
- 110v electrical outlet
- Tachometers with hour meters VDO
- Oil pressure, water temp, volt, fuel gauge VDO
- Aluminum mast with yard arms with 12v spreader lights
- Collapsible anchor / Nav lights
- Satellite TV dome KVHM3
- TV antenna archer
- Height 17'9" top of anchor light
- Height 17'2" with anchor light down
- Deck courtesy 12v lights

Lower Helm

- To starboard with sliding access door to side deck
- Teak helm wheel 24"
- Hynautic clutch and throttles
- Remote windlass up and down switch
- Trim tabs Bennett
- Compass magnetic 3 1/2" Aqua Meter Saturn
- Synchronizer Glendinning automatic
- 12v DC inlet
- Tachometers with hour meters
- Volt, fuel level, oil pressure, water temp VDO Gauges
- Fire Boy fire system monitor
- VHF handheld with holder Uniden
- Built-in drink holder
- Built-in overhead electronics cabinet
- Horn
- Stainless steel 12" grab rail
- (3) Piece windshield with matching sunbrella cover

Galley to Port

- Up and open to Main Salon
- Sliding cabin door to side deck
- Overhead Halogen down lighting
- Corrian countertops
- Stove (3) burner Princess Ceran cooktop stove
- Sink - double stainless steel with standard America single lever faucet with pullout sprayer
- Recessed soap dispenser
- Microwave / Goldstar ultra oven convection
- Coffee Maker / Black & Decker 12 cup space maker built-in
- Ice maker / U Line built-in under counter
- Fire extinguisher
- Ample over / under counter storage
- Refrigerator custom upright Norcold 110v / 12v with freezer
- Custom teak matching cabinet for refrigerator / freezer
- Galley exhaust and blower intake and exhaust
- Teak waste can
- Teak and Holly flooring

Main Salon

- Headroom 6'8"
- Access from stern trunk cabin or port and starboard sliding doors
- Teak and holly cabin sole high gloss varnished
- Overhead with halogen down lights
- Air conditioning reverser cycle 16,000 BTU with digital thermostat
- Port built in settee with cushions and storage below
- Dining table teak high gloss varnish
- Port and starboard sliding windows with screens
- Levelor blinds with teak valances and valance lighting
- Traditional satin finish teak paneling
- Ships clock Weems & Plath
- (3) Flush Access hatches for engine room access
- To starboard sofa
- Built-in desk with drawer and storage cabinets, 110v outlet
- (4) steps with grab rail to aft trunk cabin and courtesy lights
- Teak magazine rack
- Built-in bookcase to starboard
- 110v and 12v electrical panel with tinted cabinet doors

Master Stateroom

- Headroom 6'5"
- Access from main salon or cockpit
- Carpet flooring
- Pocket sliding privacy door
- Overhead with halogen down lighting
- Athwartship queen berth with night stands and reading lights
- Traditional teak paneling
- Storage under berth
- Carbon monoxide detector
- Telephone plug in
- Port and starboard 110v outlets
- Opening port lights with privacy drapes and valances
- Storage cabinets across aft bulkhead
- Air conditioning 7,000 BTU reverse cycle with digital thermostat
- (2) Drawers under end of berth
- Hanging locker Cedar lined with courtesy automatic light
- TV Built-in remote control color 12" GE tube style
- Teak towel racks
- Fire extinguisher **Certified June 2014**
- Ensuite master head

Master Head

- Ensuite with air condition duct
- Teak privacy door with mirror
- Vacu Flush fresh water head
- Vanity with sink, Corrian countertop, teak spill lip, storage below
- Mirrored medicine cabinet
- Opening port light
- Teak framed mirror
- Stahl shower with seat, bi-fold door, towel rack 6'4" headroom
- 110v outlet with GFI protector
- Molded fiberglass floor
- Exhaust fan 12v
- Holding tank level monitor

Forward Stateroom "V" Berth

- Headroom 6'6"
- Berths 6'7" with "V" Filler cushion
- Forward bulkhead teak storage cabinet and windlass inspection plate
- Port and starboard built-in storage cabinets
- Starboard Cedar lined hanging locker with automatic light
- Port Cedar lined storage locker with shelves
- (4) Under berth drawers
- Starboard (2) opening port lights with privacy shades
- Port (2) opening port lights with privacy shades
- Port teak rod holders (6) rods
- Port and starboard 110v outlets
- Overhead ventilation / escape hatch with screen 21" x 21"
- Overhead halogen down lights
- Air conditioner Cruisair 10,000 BTU reverse cycle with digital control
- Carbon monoxide detector Fire Boy
- TV - Flat screen remote control color 12" Coby
- Paneling traditional teak
- Flooring Carpet with Bilge inspection hatch and courtesy light
- Bifold privacy door

Starboard Forward Guest Head

- Headroom 6'6"
- Overhead ventilation hatch with screen
- Opaque opening portlight with privacy shade

- Teak shelf with teak cup / toothbrush holder
- Air conditioning duct
- Exhaust fan
- Mirrored medicine cabinet with halogen lighting
- Corrian counter top with molded sink and gold fixtures with teak splash rail
- Under counter / drawers, cabinets teak joinery
- Vacu Flush head fresh water with tank watch monitor
- 110v outlet with GFI breaker
- Teak tissue and magazine holders
- Stahl shower with molded seat, towel racks, glass bi-fold door
- Stahl shower head room 6'6"

Port Twin Berth - Guest Stateroom

- Head room 6'7"
- Twin single berths 6'7" length with reading lamps and storage below
- Storage under inboard berth
- Night stand with storage shelves
- Hanging locker Cedar lined
- Air Condition duct - note shared with forward guest cabin
- Teak mirrored cabinet
- To port, opening port light with privacy shade
- Overhead ventilation hatch with screen
- Traditional teak joinery
- Overhead halogen lighting
- Carbon monoxide detector (Fire Boy)
- Built-in storage locker with sliding cabinet doors
- Built-in track lighting
- Built-in dust buster
- Overhead teak chart holders
- Teak Privacy doors
- 110v outlet
- Storage locker outboard port berth
- Flooring Carpet

Aft Deck / Trunk Cabin

- Fiberglass non skid deck
- Rail custom aluminum 1 1/4" D x 29" H
- Fiberglass deck / dunnage box 72" L x 21" W x 26" H with cushion
- Rod holders (4)
- Life ring 20" with holder

- (2) Dive tank holders
- Sliding door access to main salon

Mechanical

- (2) 3116 Caterpillar 350 HP with **1250 hours**
- Air Seps
- Gears ZF 1.96:1
- Shaft 2 1/2" stainless steel with dripless shaft seals with spare seals
- Auto oil change system port and starboard main 12v
- Fire system Halon 1301 **Certified June 2014**
- Fuel filters Racor 1,000's with drip pans
- Bronze sea strainers with sea cock
- (4) 12v engine room lights
- Engine room exhaust blower
- Engine room headroom 4'3"
- Access engine room either forward steps with lift shocks
- Access engine room (3) salon sole hatches
- Engine room sound insulation
- Props (4) blade 24" x 26"
- Hynautic clutch and throttles
- Sea star hydraulic steering
- (3) Auto / manual bilge pumps 12v

Fresh Water System

- Hot water heater 20 gallon Seaward
- Water tank 250 gallon aluminum
- 12v fresh water pump
- Starboard side deck fill
- Cockpit dock side water inlet with pressure regulator
- Cockpit hot and cold shower fresh water
- Foredeck fresh water washdown

Head System

- (2) Vacu Flush fresh water heads
- (2) 25 gallon fiberglass holding tanks with overboard pump outs
- Dockside pump out deck fittings with adaptors
- Holding tank vent filter's Sealand Sanigard

Air Conditioning

- Marine Air Reverse Cycle
- Forward cabin - 10,000 BTU
- Main Salon - 16,000 BTU
- Master Stateroom - 7,000 BTU
- All digital thermostats
- Air condition ducts in fore and aft heads
- 110v sea water pump with bronze sea strainer and sea cock

Electrical

- 8 K.W. Kohler Generator 1800 RPM with **1663 hours**
- (1) 12v maintenance free style generator start battery
- (2) 8 D Wet Cell engine starting batteries
- Battery charger Sentry 12v (3) output 40 AMP
- 110v / 12v breaker panel - Main Salon
- Generator remote start breaker panel - Main Salon
- Dockside inlets 50 AMP foredeck and cockpit
- 50' x 50 AMP shore cord
- Additional 25' x 50 AMP shore cord
- Telephone / Cable TV inlets bow and stern
- Battery on / off switches main engines and generator
- Battery parallel switch

Additional

- (1) Wishbone style anchor with leader chain 1/4" x 6'
- (1) Danforth anchor with leader chain 1/4" x 6'
- Tow rope 60' x 1" nylon
- Satellite TV KVH M3 with (1) Direct TV DSS receiver
- Overall length 47'9"

Broker's Comments

"Marker 18" was purchased new by her present original owners. She has been maintained exceptionally well, cosmetically and mechanically by her knowledgeable owners. An opportunity has presented itself to purchase a highly desirable US built family motor yacht that will make a knowledgeable buyer, a dependable quality motor yacht. This will not last, a must see!

Exclusions

Personal items, a detailed list will be provided at time of sale.

Exclusions

Owner's personal belongings.

Disclaimer

The Company offers the details of this vessel or yacht in good faith but cannot guarantee or warrant the accuracy of this information nor warrant the condition of the vessel. A buyer should instruct his representatives, agents, or his surveyors, to investigate such details as the buyer desires validated. This vessel or yacht is offered subject to prior sale, price change, or withdrawal without notice.

PHOTOS

Foredeck



Foredeck



Side deck



Trunk Cabin / Aft deck



Trunk Cabin / Aft deck



Cockpit



Transom



Flybridge



Flybridge



Flybridge



Flybridge



Lower Helm



Galley



Galley



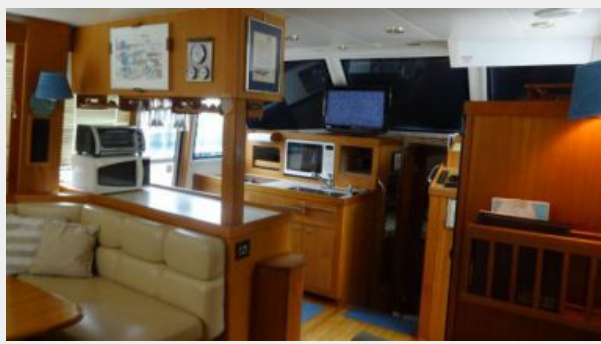
Galley



Galley



Galley



Main Salon



Main Salon



Main Salon



Main Salon



Main Salon



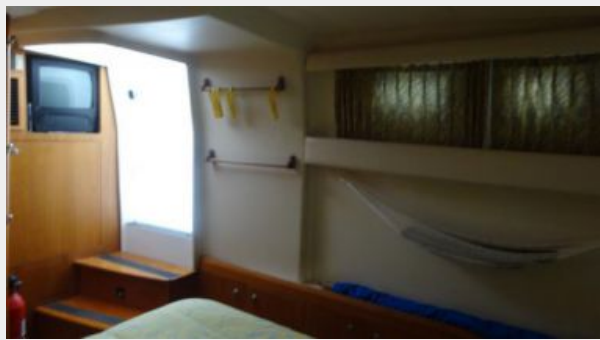
Master Stateroom



Master Stateroom



Master Stateroom



Master Stateroom



Master Stateroom Head



Master Stateroom Head



Forward Companionway



Forward Guest Stateroom



Forward Guest Stateroom



Forward Guest Stateroom



Forward Guest Head



Forward Guest Head



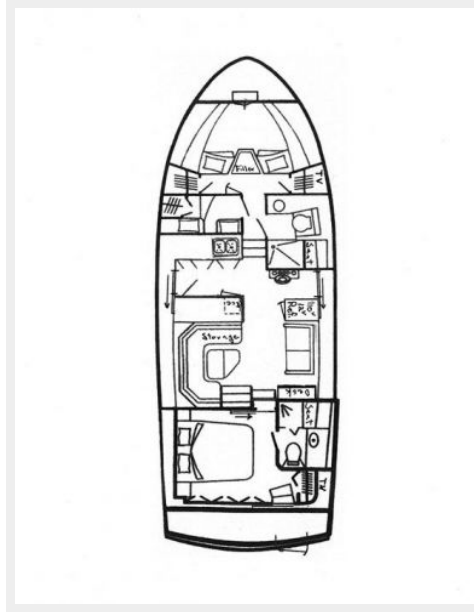
Port Guest Stateroom



Port Guest Stateroom



Layout



CONTACTS

Andrey Shestakov, leading yacht broker of the sales department of Shestakov Yacht Sales Inc. Shestakov Yacht Sales Inc., the official representative of the Miami/Fort Lauderdale FL headquarters.

Contact details

Email: andrey@shestakovyachtsales.com

Web: shestakovyachtsales.com/en/

Telephones

USA: +1(954)274-4435

Office hours

Monday – Saturday: **9:00 - 21:00** EDT

Sunday: **closed**

Address



Harbour Towne Marina, 850 NE 3rd St,
STE 213, Dania, FL 33004