

GET A GRIP III — CUSTOM



Builder: CUSTOM

Year Built: 1987

Model: Trawler

Price: PRICE ON APPLICATION

Location: United States

LOA: 38' 0" (11.58m)

Beam: 12' 10" (3.91m)

Min Draft: 3' 6" (1.07m)

Our experienced yacht broker, Andrey Shestakov, will help you choose and buy a yacht that best suits your needs **Get A Grip III — CUSTOM** from our catalogue. Presently, at Shestakov Yacht Sales Inc., we have a wide variety of yachts available on our sale's list. We also work in close contact with all the big yacht manufacturers from all over the world.

If you would like to buy a yacht **Get A Grip III — CUSTOM** or would like help answering any questions concerning purchasing, selling or chartering a yacht, please call **+1(954)274-4435**

TABLE OF CONTENTS

TABLE OF CONTENTS	2
SPECIFICATIONS	3
Overview	3
Basic Information	4
Dimensions	4
Speed, Capacities and Weight	4
Accommodations	4
Hull and Deck Information	5
Engine Information	5
PHOTOS	6
CONTACTS	11
Contact details	11
Telephones	11
Office hours	11
Address	11

SPECIFICATIONS

Overview

This 1987 sundeck trawler was produced by the high end yacht builder, Hartmann Yachts to serve owners desiring a smaller quality built yacht. Many features and details are only found in much higher priced vessels. Get A Grip III has twin diesel powered Ford Lehmans that offer both trawler speed economy in addition to fast trawler speed for quick runs to sheltered waters. A/C, two staterooms, two heads, upper and lower helm stations and a fiberglass hardtop covered sundeck for enjoying your time on the water. A well maintained vessel that is a must see. Great vessel for live aboards and loopers

Boat Name Get A Grip III **Specs** Builder: Tung Hwa Industries Co. Designer: Hartmann Yachts Inc. Hull Shape: Semi-Displacement **Dimensions** LOA: 38 ft 0 in Beam: 12 ft 10 in Minimum Draft: 3 ft 6 in Displacement: 32000 lbs Dry Load **Engines** Engine 1: Engine Brand: Ford Lehman Year Built: 1987 Engine Model: Sabre Engine Type: Inboard Engine/Fuel Type: Diesel Location: Port Engine Hours: 2700 Propeller: 3 blade propeller Drive Type: Direct Drive Engine(s) Total Power: 225 HP Engine 2: Engine Brand: Ford Lehman Year Built: 1987 Engine Model: Sabre Engine Type: Inboard Engine/Fuel Type: Diesel Location: Starboard Engine Hours: 2700 Propeller: 3 blade propeller Drive Type: Direct Drive Engine(s) Total Power: 225 HP **Tanks** Fresh Water Tanks: 1 Stainless steel (100 Gallons) Fuel Tanks: 2 Stainless steel (175 Gallons) Holding Tanks: 1 Plastic (40 Gallons) **Accommodations** Number of twin berths: 1 Number of double berths: 1 Number of cabins: 2 Number of heads: 2 **Electronics** Depthsounder Cockpit speakers Radar - Furuno 1731 Autopilot - Robertson AP100 with remote CD player Plotter - Standard Horizon GPS Chart CP500 Compass - Two, one at each helm station VHF - ICOM & Std. Horizon GPS - Standard Horizon Log-speedometer - Datamarine **Inside Equipment** Air conditioning - # Marine Air Units Electric bilge pump - Also include high water alarm Refrigerator - Norcold Ref/Freezer new 2006 Electric head - Located in both heads Hot water - Force 10 6 gallons Microwave oven - Whirlpool MW3520XP Battery charger Heating - Reverse cycle A/C Oven - Princess three burner electric stove with oven Sea water pump Manual bilge pump **Electrical Equipment** Shore power inlet - Two 30 amp cords Generator - Westerbeke 6 KW w 3050 hrs Electrical Circuit: 12V **Outside Equipment/Extras** Swimming ladder Cockpit cushions - Fly bridge cushions with storage beneath Tender - Carib 10 Hypalon dinghy with Nisan 9.8 hp two stroke engine Davits Total Liferaft Capacity: 3 Electric windlass **Covers** Bimini Top - Bimini top with complete fly bridge enclosure

Vessel Walk Through

"Get A Grip" sleeps up to 4 owners/guest in two double staterooms, plus a double convertible dinette for a total of 6 overnight berths; 2 enclosed heads with showers.

Layout from forward to aft: Chain locker followed by guest stateroom with V-berth opening overhead hatch, hanging locker aft to port, privacy door and ensuite head/shower to starboard.

Moving aft is the U-shaped galley on port, and the convertible dinette opposite to starboard.

Aft and up to the main salon deck is the main cabin and with the lower helm station on the

starboard side. This comfortable salon area has wrap around windows for light and enjoying the water views. Access to the forward deck is via a starboard sliding door and to the sundeck via salon aft ladder and door.

The Master Stateroom is aft and down, full vessel width and featuring a centerline queen berth, lots of storage, hanging lockers and again an ensuite head with separate tub/shower. This is a very large and comfortable area for live aboard owners.

Overhead of the Master Stateroom is the Preferred Aft Deck covered with a fiberglass hardtop for all weather use. There is also a ladder to the swim platform and dingy with dingy davits.

Basic Information

Category: Trawler

Model Year: 1987

Year Built: 1987

Country: United States

Fly Bridge: Yes

Dimensions

LOA: 38' 0" (11.58m)

Beam: 12' 10" (3.91m)

Min Draft: 3' 6" (1.07m)

Speed, Capacities and Weight

Displacement: 32000 Pounds

Water Capacity: 100 Gallons

Holding Tank: 40 Gallons

Fuel Capacity: 175 Gallons

Accommodations

Total Cabins: 2

Hull and Deck Information

Hull Material: Fiberglass

Engine Information

Engines: 2

Manufacturer: Ford Lehman

Model: Sabre

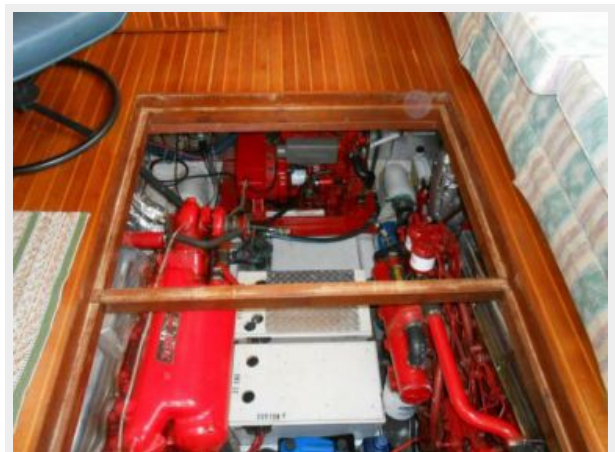
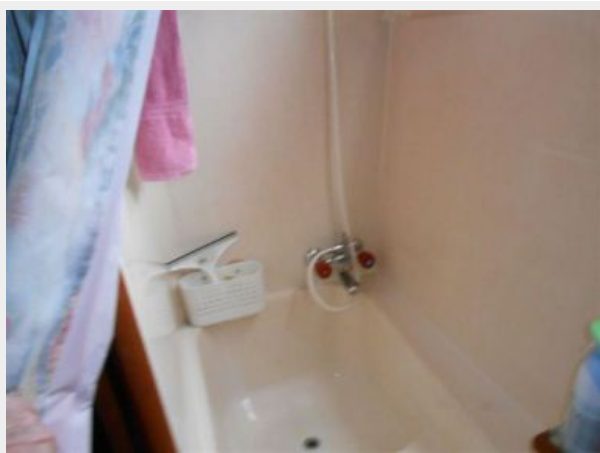
Engine Type: Inboard

Fuel Type: Diesel

PHOTOS











CONTACTS

Andrey Shestakov, leading yacht broker of the sales department of Shestakov Yacht Sales Inc. Shestakov Yacht Sales Inc., the official representative of the Miami/Fort Lauderdale FL headquarters.

Contact details

Email: andrey@shestakovyachtsales.com

Web: shestakovyachtsales.com/en/

Telephones

USA: +1(954)274-4435

Office hours

Monday – Saturday: **9:00 - 21:00** EDT

Sunday: **closed**

Address



Harbour Towne Marina, 850 NE 3rd St,
STE 213, Dania, FL 33004