

PAIR OF JACKS — SEA RAY



Builder: SEA RAY

LOA: 45' 0" (13.72m)

Year Built: 2003

Beam: 14' 8" (4.47m)

Model: Motor Yacht

Price: PRICE ON APPLICATION

Location: United States

Our experienced yacht broker, Andrey Shestakov, will help you choose and buy a yacht that best suits your needs **Pair of Jacks — SEA RAY** from our catalogue. Presently, at Shestakov Yacht Sales Inc., we have a wide variety of yachts available on our sale's list. We also work in close contact with all the big yacht manufacturers from all over the world.

If you would like to buy a yacht **Pair of Jacks — SEA RAY** or would like help answering any questions concerning purchasing, selling or chartering a yacht, please call **+1(954)274-4435**

TABLE OF CONTENTS

TABLE OF CONTENTS	2
SPECIFICATIONS	5
Overview	5
Basic Information	5
Dimensions	5
Speed, Capacities and Weight	5
Accommodations	5
Hull and Deck Information	5
Engine Information	6
DETAILED INFORMATION	7
Accommodations	7
Galley	7
Electronics	7
Deck Equipment	7
Electrical Equipment	8
Mechanical	8
Disclaimer	8
Exclusions	8
Disclaimer	8
PHOTOS	9
Exterior	9
Exterior	9
Exterior	9
Exterior	9
Cockpit	9
Transom	9
Cockpit	10
Cockpit	10

Cockpit	10
Flybridge	10
Flybridge	10
Helm	10
Helm	11
Flybridge	11
Clean Canvas	11
Clear Enclosure	11
Salon	11
Salon	11
Salon	12
Salon	12
Galley	12
Galley	12
Galley	12
Master Stateroom	12
Master Stateroom Head	13
Guest Stateroom	13
Guest Stateroom Storage	13
Guest Stateroom Head	13
Engine Room	13
Engine Room	13
Engine Room	14
Engine Room	14
CONTACTS	15
Contact details	15
Telephones	15
Office hours	15
Address	15

SPECIFICATIONS

Overview

The Sea Ray 450 Express Bridge provides ample seating and sleeping accommodations. With two generous staterooms and two full heads, space abounds in this superbly designed 45-foot sport yacht.

Basic Information

Category: Motor Yacht

Model Year: 2003

Year Built: 2003

Country: United States

Vessel Top: Bimini Top

Fly Bridge: Yes

Cockpit: Yes

Dimensions

LOA: 45' 0" (13.72m)

Beam: 14' 8" (4.47m)

Speed, Capacities and Weight

Displacement: 29500 Pounds

Water Capacity: 100 Gallons

Holding Tank: 60 Gallons

Fuel Capacity: 400 Gallons

Accommodations

Total Cabins: 2

Total Heads: 2

Hull and Deck Information

Hull Material: Fiberglass

Engine Information

Engines: 2

Manufacturer: Cummins

Model: 6CTA 8.3M

Engine Type: Inboard

Fuel Type: Diesel

DETAILED INFORMATION

Accommodations

CruisAir air conditioning/heat with SMX2 controls Central vacuum system

FORWARD STATEROOM Island berth with storage below Panasonic TV/VCR combo Hanging locker and storage cabinets Overhead hatch with screen and blackout Ensuite head with VacuFlush toilet Stall shower Mirrored medicine cabinet

GUEST STATEROOM Double berth with storage below Panasonic TV/VCR combo Storage cabinets Overhead natural lighting from salon Access to day head with VacuFlush toilet and stall shower

SALON Glass and liquor storage LG flat panel TV BOSE stereo Clarion stereo with cd changer Raymarine Sat TV HD Antenna Direct TV HD receiver 12 volt plug Glomax TV tuner Starboard side glass storage and liquor storage Bottle storage and horizontal wine rack C-shaped sofa to starboard Small c-shaped sofa to port Cabinets above sofa on star side Shades port and starboard Breaker panel port side above sofa

Galley

U-Line refrigerator/freezer Kenyon (3) burner electric stove Microwave oven Coffee maker Wood flooring Storage cabinets

Electronics

Raymarine RL80C Raymarine RN300 GPS Raymarine ST7001 Autopilot Autohelm ST60 Tridata Raymarine Ray VHF Radio Sea Ray systems monitor ACR RCL-100 remote spotlight Clarion stereo helm remote

Deck Equipment

DECK Windlass with chain rode and Danforth anchor Foredeck seat with handrails Stairway from foredeck to flybridge

FLYBRIDGE Full bimini with enclosure curtains Helm cover Table Aft and starboard side seating

COCKPIT Stairs to bridge Under stairs breaker panel with battery solenoids, fuel shut offs and generator gauges Sun canopy over salon door Aft bench seat with storage and cover Stereo control on starboard side Cabinet on port side and star side Engine room access Steps to port and star to go forward to bow Transom gates to swim platform Swim platform with swim ladder Aft

storage compartment Storage above aft bench seat Hot/cold shower

Electrical Equipment

Westerbeke generator with sound shield and 272 hours C-Power marine isolation transformer
Glendinning 50amp Cablemaster Battery charger

Mechanical

Vetus bow and stern thrusters Oil change system Hydraulic steering Fuel filters

Disclaimer

The Company offers the details of this vessel in good faith but cannot guarantee or warrant the accuracy of this information nor warrant the condition of the vessel. A buyer should instruct his agents, or his surveyors, to investigate such details as the buyer desires validated. This vessel is offered subject to prior sale, price change, or withdrawal without notice.

Exclusions

Owner's personal belongings.

Disclaimer

The Company offers the details of this vessel or yacht in good faith but cannot guarantee or warrant the accuracy of this information nor warrant the condition of the vessel. A buyer should instruct his representatives, agents, or his surveyors, to investigate such details as the buyer desires validated. This vessel or yacht is offered subject to prior sale, price change, or withdrawal without notice.

PHOTOS

Exterior



Exterior



Exterior



Exterior



Cockpit



Transom



Cockpit



Cockpit



Cockpit



Flybridge



Flybridge



Helm



Helm



Flybridge



Clean Canvas



Clear Enclosure



Salon



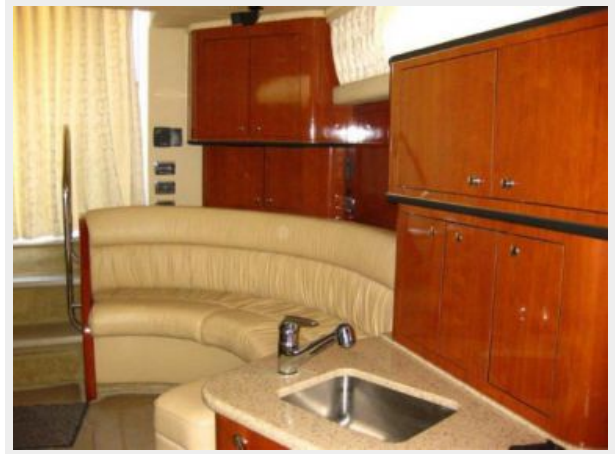
Salon



Salon



Salon



Galley



Galley



Galley



Master Stateroom



Master Stateroom Head



Guest Stateroom



Guest Stateroom Storage



Guest Stateroom Head



Engine Room



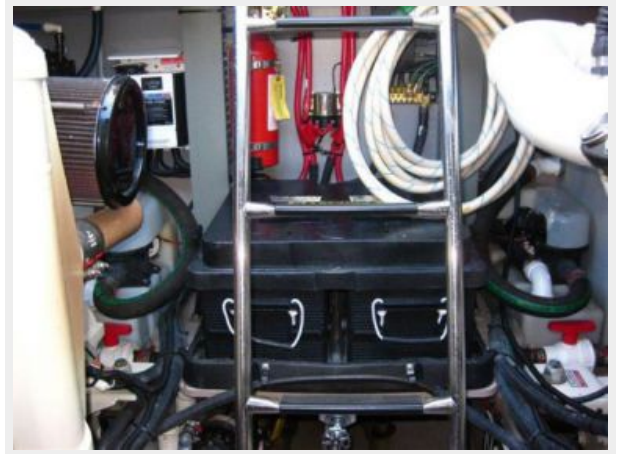
Engine Room



Engine Room



Engine Room



CONTACTS

Andrey Shestakov, leading yacht broker of the sales department of Shestakov Yacht Sales Inc. Shestakov Yacht Sales Inc., the official representative of the Miami/Fort Lauderdale FL headquarters.

Contact details

Email: andrey@shestakovyachtsales.com

Web: shestakovyachtsales.com/en/

Telephones

USA: +1(954)274-4435

Office hours

Monday – Saturday: **9:00 - 21:00** EDT

Sunday: **closed**

Address



Harbour Towne Marina, 850 NE 3rd St,
STE 213, Dania, FL 33004