

RAJKUMARI — TANIA YACHT CO.



Builder: TANIA YACHT CO.

LOA: 55' 0" (16.76m)

Year Built: 1993

Beam: 15' 7" (4.73m)

Model: Houseboat

Price: PRICE ON APPLICATION

Location: China

Our experienced yacht broker, Andrey Shestakov, will help you choose and buy a yacht that best suits your needs **Rajkumari — TANIA YACHT CO.** from our catalogue. Presently, at Shestakov Yacht Sales Inc., we have a wide variety of yachts available on our sale's list. We also work in close contact with all the big yacht manufacturers from all over the world.

If you would like to buy a yacht **Rajkumari — TANIA YACHT CO.** or would like help answering any questions concerning purchasing, selling or chartering a yacht, please call **+1(954)274-4435**

TABLE OF CONTENTS

TABLE OF CONTENTS	2
SPECIFICATIONS	3
Basic Information	3
Dimensions	3
Accommodations	3
Hull and Deck Information	3
Engine Information	3
DETAILED INFORMATION	4
Specification	4
Instruments	4
Features	4
Exclusions	4
Disclaimer	4
PHOTOS	5
Main Cabin	5
Master Cabin	5
Kitchen	7
Front Cabin	7
Kids Room / Study Room	7
Dinner Area	9
Helm Area	9
Engine Room	10
CONTACTS	11
Contact details	11
Telephones	11
Office hours	11
Address	11

SPECIFICATIONS

Basic Information

Category: Houseboat

Sub Category: Coastal Yacht

Model Year: 1993

Year Built: 1993

Country: China

Dimensions

LOA: 55' 0" (16.76m)

Beam: 15' 7" (4.73m)

Accommodations

Total Cabins: 4

Hull and Deck Information

Hull Material: GRP

Engine Information

Engines: 2

Manufacturer: Caterpillar

Model: X series

Fuel Type: Diesel

DETAILED INFORMATION

Specification

Builder : Tania Yachts Ltd. Taiwan. Model : Tania 55 Built /Year : Taiwan / 1993 Construction : Glass reinforced plastic. L.O.A. : 16.76m. Beam : 4.73m Passengers : Max. No. to be carried is 12 persons (passengers and crew) Machinery : Twin Caterpillar marine diesels x series 3208 x 210 hp each. Generator : Onan x 12 Kw. Tender : Walker Bay sailing dinghy. No. USLWVA148B203. Max. passengers x 4 with luggage @ 372 kg. Outboard : Evinrude x 2hp. Model HE4RLDD

Instruments

(1) Simrad / Robertson AP 20 Auto Pilot and operator's panel (2) Naiad Systems Stabiliser . Roll control system. (3) Bilge pump Indicator Panel and High water panel lights. (4) Tridata Instrument panel. Depth, Speed thro' water. Trip distance. (5) G.P.S. Shipmate CP32 Simrad.. With Chart cartridge. (6) Plastimo steering Compass. Offshore 105. (7) VHF with DSC stabilized G.P.S. output. Model 'Standard'

Features

This well maintained Tania 55 has a luxurious interior and spacious accommodation. Master bedroom en suite and additional guest room and kids room with private facilities. Wonderful entertainment and outdoor space. Fully equipped for local or long distance cruising with twin Caterpillar X series engines. The price is including debenture and berth. You can just bring your change and move in!

Exclusions

Owner's personal belongings.

Disclaimer

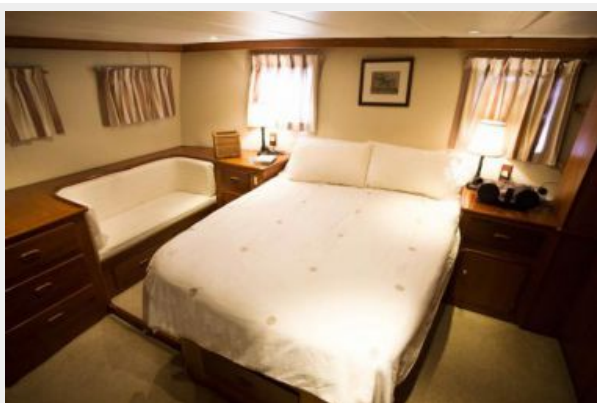
The Company offers the details of this vessel or yacht in good faith but cannot guarantee or warrant the accuracy of this information nor warrant the condition of the vessel. A buyer should instruct his representatives, agents, or his surveyors, to investigate such details as the buyer desires validated. This vessel or yacht is offered subject to prior sale, price change, or withdrawal without notice.

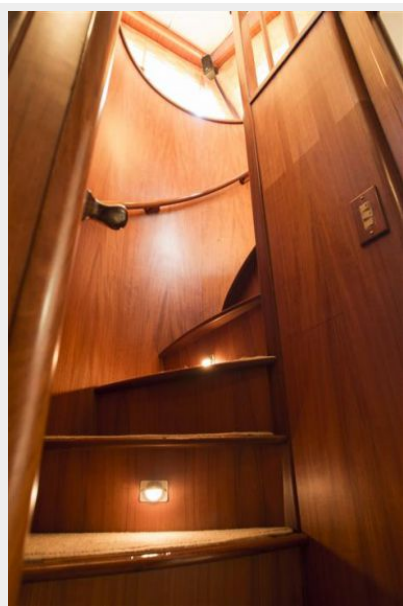
PHOTOS

Main Cabin



Master Cabin





Kitchen



Front Cabin



Kids Room / Study Room



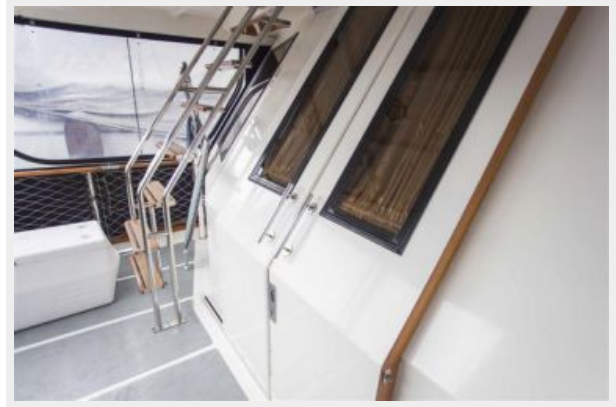


Dinner Area

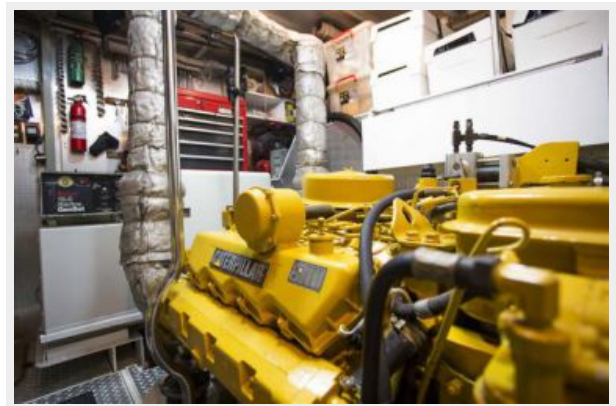


Helm Area





Engine Room



CONTACTS

Andrey Shestakov, leading yacht broker of the sales department of Shestakov Yacht Sales Inc. Shestakov Yacht Sales Inc., the official representative of the Miami/Fort Lauderdale FL headquarters.

Contact details

Email: andrey@shestakovyachtsales.com

Web: shestakovyachtsales.com/en/

Telephones

USA: +1(954)274-4435

Office hours

Monday – Saturday: **9:00 - 21:00** EDT

Sunday: **closed**

Address



Harbour Towne Marina, 850 NE 3rd St,
STE 213, Dania, FL 33004