

GRAND MARIANA III — ISA YACHTS



Builder: ISA YACHTS

Year Built: 2009

Model: Motor Yacht

Price: PRICE ON APPLICATION

Location: Guam

LOA: 119' 6" (36.40m)

Beam: 24' 4" (7.40m)

Min Draft: 4' 4" (1.30m)

Max Draft: 5' 0" (1.50m)

Cruise Speed: 22 Kts. (25 MPH)

Max Speed: 32 Kts. (37 MPH)

Our experienced yacht broker, Andrey Shestakov, will help you choose and buy a yacht that best suits your needs **GRAND MARIANA III — ISA YACHTS** from our catalogue. Presently, at Shestakov Yacht Sales Inc., we have a wide variety of yachts available on our sale's list. We also work in close contact with all the big yacht manufacturers from all over the world.

If you would like to buy a yacht **GRAND MARIANA III — ISA YACHTS** or would like help answering any questions concerning purchasing, selling or chartering a yacht, please call **+1(954)274-4435**

TABLE OF CONTENTS

TABLE OF CONTENTS	2
SPECIFICATIONS	4
Overview	4
Basic Information	4
Dimensions	4
Speed, Capacities and Weight	5
Accommodations	5
Hull and Deck Information	5
Engine Information	5
DETAILED INFORMATION	6
Accommodations	6
Audio & Visual Equipment	6
Deck Equipment	6
Tenders and Toys	6
Electrical Equipment	7
Galley	7
Electronics and Navigational Equipment	7
Safety & Fire Protection	7
Exclusions	8
Disclaimer	8
PHOTOS	9
Running	9
Approaching by tender	9
Toys	9
Sundeck	9
Sundeck	9
Jacuzzi	9
Aft Deck	10

Aft Deck	10
Main Salon	10
Main Salon	10
Main Salon Dining	10
Master Cabin	10
Twin Cabin + pullman	11
Master Cabin Bathroom	11
Twin Cabin + pullman	11
Double Cabin	11
Double Cabin	11
Bridge	11
Aft Deck	12
Sundeck Dining	12
Sundeck	12
Sundeck Dining	12
Running	12
JetSki launching	12
At Anchor	13
Crew Area	13
Crew Cabin	13
Garage	13
Lazarette	14
Garage Laundry	14
CONTACTS	15
Contact details	15
Telephones	15
Office hours	15
Address	15

SPECIFICATIONS

Overview

Launched in 2009 by ISA this truly stunning motor yacht is not your standard production yacht, she has a stunning high-end interior beautifully designed by Cristiano Gatto and a 'as new' exterior finish in Dupont marine Pearl White - **GRAND MARIANA III** simply stands out from the crowd, exterior spaces are expansive, thoughtfully laid out with entertainment foremost.

GRAND MARIANA III features accommodations for up to 12 guests in 5 staterooms including an expansive on-deck master, all exquisitely finished and furnished. With the ability to entertain large groups of guests over her expansive exterior decks, four large sun pads, 3 dining areas, zero speed stabilizers, Teppanyaki table and Jacuzzi all combined with 32 knots of top speed, **GRAND MARIANA III** is the perfect yacht to entertain family, friends and guests in ultimate luxury.

Basic Information

Category: Motor Yacht

Sub Category: Fast

Model Year: 2009

Year Built: 2009

Country: Guam

Vessel Top: Hardtop

Dimensions

LOA: 119' 6" (36.40m)

LWL: 100' 8" (30.67m)

Beam: 24' 4" (7.40m)

Min Draft: 4' 4" (1.30m)

Max Draft: 5' 0" (1.50m)

Clearance: 41' 9" (12.70m)

Speed, Capacities and Weight

Cruise Speed: 22 Kts. (25 MPH)

Cruise Speed RPM: 1800 Kts.

Cruise Speed Range: 450

Max Speed: 32 Kts. (37 MPH)

Max Speed RPM: 2350 Kts.

Displacement: 154323.5834 Pounds

Gross Tonnage: 235 Pounds

Water Capacity: 1056.688208 Gallons

Holding Tank: 1056.688208 Gallons

Fuel Capacity: 6406.172261 Gallons

Accommodations

Total Cabins: 5

Total Berths: 12

Sleeps: 12

Total Heads: 6

Crew Cabin: 3

Crew Berths: 6

Crew Sleeps: 6

Crew Heads: 3

Hull and Deck Information

Hull Material: GRP

Deck Material: Teak

Hull Configuration: Semi-Displacement

Hull Color: Paint DuPont Marine White Pearl

Exterior Designer: Andrea Vallicelli

Interior Designer: Cristiano Gatto Design

Engine Information

Engines: 3

Manufacturer: MTU

Model: 16V2000 M93

Engine Type: Inboard

Fuel Type: Diesel

DETAILED INFORMATION

Accommodations

Total number of guests sleeps onboard is 10 in 5 cabins but has two Pullmans to accommodate 12 if needed. Master cabin is in main deck, two twin (with one Pullman each) and two double cabins are located in the Lower Deck. All cabins have ensuite bathrooms. In the salon, a round table for 8 is located closed to the curved sliding door (expandable for 12). A bar and access to galley is with in the salon area. Comfortable L shape sofas facing the entertainment system. A day head is also located next to the stairs to lower deck cabins. The other side of the entertainment area is the access to the cockpit area then to flybridge. Sun deck area consists a dining area and sunbathing area. The sun bathing area can also be converted into a dining table with Teppanyaki grill.

Audio & Visual Equipment

SeaTel 3004E antenna system · Audio system in Main Salon, external Main Deck and Sun Deck · Kaleidescape system · Mini Ipad touch screen throughout · IPod MP3 connection throughout · Loewe 52" Full HD LCD TV · Samsung DVD player · Denon sintoamplifier · Satellite speakers and subwoofer · 2 x B&W speakers

Master Stateroom: · Loewe 40" Full HD LCD TV · Denon sintoamplifier, SKY TV · Samsung DVD player, · 2 x B&W speakers · 2 x Bose marine speakers for bathroom

VIP Staterooms: Loewe 26" Full HD LCD TV · SKY TV Pioneer · DVD player · 2 x B&W speakers

Crew Mess: Samsung 26" LCD TV · Pioneer DVD player · B& W speakers, Ipod Control

Phillips pronto System · CCTV screen control Crew Cabins: · Berth No1 (captain berth) equipped with entertainment screen and head phones.

Deck Equipment

Bathing platform · Besenzoni retractable swim ladder · Manual lateral boarding ladder · Sanguinetti electro/hydraulic aft gangway · Besenzoni electro/hydraulic davit · 2 x 120 kg anchors with 120 m chains · 2 x Muir windlasses · 2 x Muir 1.5 kW electric capstans · Awing aft up to Teppanyaki grill · Jacuzzi

Tenders and Toys

5.2m Castoldi tender with 90hp · 2 x Yamaha WR GP1300R (racing) Jet-Skis · 2 x SEABOB's ·

Wakeboard · Water skis · Inflatable water toys · Snorkeling equipment

Electrical Equipment

2 x 50 kW Kohler generators, 380V, 50 Hz 3 phase, 1500 rpm · 100A shore connector/isolation transformer · 380V 50 Hz 3 phase AC electrical distribution system · 24V DC electrical distribution system · 2 x starting battery banks for main engines · 2 x starting battery banks for generators · 1 x emergency/auxiliary battery bank · 2 x ER electronics battery banks · Each battery bank will be charged by one battery charger (except for double charger for emergency/auxiliary batteries) · 2 x 24/75 Mastervolt battery chargers · 1 x 24/25 Mastervolt battery charger.

Galley

Miele professional G8051 dish washer · 4 x Bosch cooking vitro ceramic · 2 x s.steel Frijoboat fridge/freezer · Raritan icemaker · Miele oven · Miele microwave · Alpes extractor · 2 x large Frijoboat fridge/freezer **Salon wet bar:** · Raritan icemaker · Minifridge · Sink s.steel · Stone dark counter top · Fridge in guest foyer · Wine cellar · 3 x icemakers

Fly Bridge: · Grill · Fridge · Ice maker · Teppanyaki grill · Induction plate **Laundry:** · Miele professional PT7136 Plus washing machine · Miele professional PW606J dryer.

Electronics and Navigational Equipment

Mini M · VSAT SEATEL 3004 30 inch DAC2200 – FULL SKY HD Decoders (7)

· Furuno FR 1953 radar + Black Box · Network Sounder ETR6/10N echo sounder · Furuno GP 37 SatNav GPS · Cartography system · B & G Hydra 2000 wind/depth/log system · GT NMEA interface · C. Plath Navipilot HSC/GM autopilot · Magnetic compass · C. Plath Navigat X gyrocompass · Sailor TRP 1000 · DSC (A Class) VHF radiotelephone · Sailor Inmarsat C Scansat CT Sat Com system · Thrane & Thrane Mini M · McMurdo Epirb · McMurdo radar transponder · Furuno NX 500 Navtex receiver · 2 x GMDSS portable VHF · 3 x Hatteland screens fully interfaced. Navigation . Radar . CCTV . Engine control management: . Screen keyboard control . Screen system control (tanks, bilge, electrical, water, tight doors, control dampers, 24/220V, batteries, pump, alarm)

Safety & Fire Protection

Safe in all staterooms and captain's cabin · Novtec 1230 fire extinguishing system in engine room · CO² extinguisher for galley exhaust duct · 2 x Seawater fire fighting system (fire and bilge) · Motopump gasoil (fire/bilge) · 2 x 6 pax life rafts · 4 x life rings · fog bell · fog horn · Kahlenberg

air horn · 2 x boat hooks · 8 x inflatable fenders · 6 x dock lines · 1 x 100m towing line · 2 x weighted heaving lines · 2 x line throwing apparatus

Exclusions

Owner's personal belongings.

Disclaimer

The Company offers the details of this vessel or yacht in good faith but cannot guarantee or warrant the accuracy of this information nor warrant the condition of the vessel. A buyer should instruct his representatives, agents, or his surveyors, to investigate such details as the buyer desires validated. This vessel or yacht is offered subject to prior sale, price change, or withdrawal without notice.

PHOTOS

Running



Approaching by tender



Toys



Sundeck



Sundeck



Jacuzzi



Aft Deck



Aft Deck



Main Salon



Main Salon



Main Salon Dining



Master Cabin



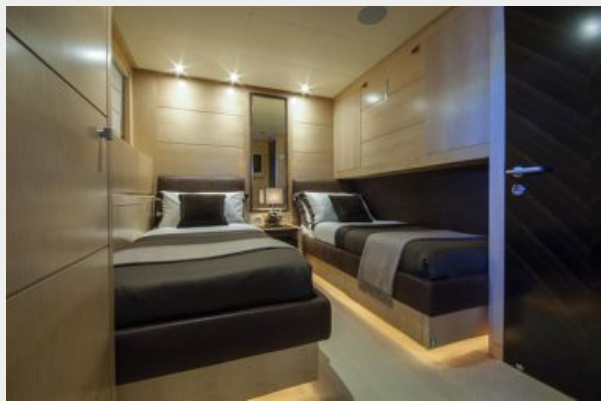
Master Cabin Bathroom



Twin Cabin + pullman



Twin Cabin + pullman



Double Cabin



Double Cabin



Bridge



Aft Deck



Sundeck Dining



Sundeck



Sundeck Dining



Running



JetSki launching



At Anchor



Crew Area



Crew Cabin



Garage



Lazarette



Garage Laundry



CONTACTS

Andrey Shestakov, leading yacht broker of the sales department of Shestakov Yacht Sales Inc. Shestakov Yacht Sales Inc., the official representative of the Miami/Fort Lauderdale FL headquarters.

Contact details

Email: andrey@shestakovyachtsales.com

Web: shestakovyachtsales.com/en/

Telephones

USA: +1(954)274-4435

Office hours

Monday – Saturday: **9:00 - 21:00** EDT

Sunday: **closed**

Address



Harbour Towne Marina, 850 NE 3rd St,
STE 213, Dania, FL 33004