

BLUEGRASS — HATTERAS



Builder: HATTERAS

Year Built: 2006

Model: Sport Fisherman

Price: PRICE ON APPLICATION

Location: United States

LOA: 50' 0" (15.24m)

Beam: 16' 0" (4.88m)

Max Draft: 4' 11" (1.50m)

Our experienced yacht broker, Andrey Shestakov, will help you choose and buy a yacht that best suits your needs **Bluegrass — HATTERAS** from our catalogue. Presently, at Shestakov Yacht Sales Inc., we have a wide variety of yachts available on our sale's list. We also work in close contact with all the big yacht manufacturers from all over the world.

If you would like to buy a yacht **Bluegrass — HATTERAS** or would like help answering any questions concerning purchasing, selling or chartering a yacht, please call **+1(954)274-4435**

TABLE OF CONTENTS

TABLE OF CONTENTS	2
SPECIFICATIONS	5
Overview	5
Basic Information	5
Dimensions	5
Speed, Capacities and Weight	5
Accommodations	5
Hull and Deck Information	6
Engine Information	6
DETAILED INFORMATION	7
Manufacturer Provided Description	7
Interior Accomodations	7
Salon	7
Galley	8
Master Stateroom	8
Master Head	8
VIP Stateroom	9
Guest Head	9
Fly Bridge	9
Electronics	10
Deck and Construction	10
Electrical System	11
Engine Room/Mechanical	11
Cockpit	12
Items of Consideration	13
Exclusions	13
Exclusions	13
Disclaimer	13

PHOTOS	14
Salon	14
Galley	14
Salon and Dinette	14
Master Stateroom	14
Salon	14
Salon	14
Salon	15
Salon and Galley	15
Dinette	15
VIP Stateroom	15
Guest Stateroom Port	16
VIP Stateroom	16
Guest Head	16
Guest Head	16
Washer/Dryer Unit	17
Electrical Panel	17
Helm	17
Flybridge	17
Flybridge	17
Flybridge Seating	17
Cockpit Entry Door	18
Flybridge Seating and Drink Box	18
Cockpit Prep and Tackle	18
Cockpit Prep and Freezer	18
Engineroom	19
Engineroom	19
Port Engine Tag	19
Port Engine	19

Starboard Engine Tag	19
Starboard Engine	19
Transom	20
Profile	20
CONTACTS	21
Contact details	21
Telephones	21
Office hours	21
Address	21

SPECIFICATIONS

Overview

If you are looking for a turnkey, cruise equipped, quality sport fisherman with all the bells and whistles.....LOOK NO FURTHER!!!! "Bluegrass" is without a doubt the BEST offering on the market today in the 50' Sportfish class. She features efficient CAT C-18 power with warranty and only 1300 hours, updated electronics, a fresh interior, and an exterior that shines like a new boat. Her owner has spared no expense to make this 50 Hatteras a real head turner. The owner's change of plans makes this an opportunity for someone looking for a great boat at a fraction of the replacement cost. Please take the time to review the full specifications and you will see that "Bluegrass" is ready for even the most discriminating buyer's inspection.

Basic Information

Category: Sport Fisherman

Sub Category: Convertible

Model Year: 2006

Year Built: 2006

Country: United States

Dimensions

LOA: 50' 0" (15.24m)

Beam: 16' 0" (4.88m)

Max Draft: 4' 11" (1.50m)

Speed, Capacities and Weight

Displacement: 62000 Pounds

Water Capacity: 184 Gallons

Holding Tank: 85 Gallons

Fuel Capacity: 1060 Gallons

Accommodations

Total Cabins: 3

Total Heads: 2

Hull and Deck Information

Hull Material: Fiberglass

Hull Configuration: Deep Vee

Engine Information

Engines: 2

Manufacturer: Caterpillar

Model: C-18

Engine Type: Inboard

Fuel Type: Diesel

DETAILED INFORMATION

Manufacturer Provided Description

Like all Hatteras yachts, the 50 Convertible attains high speeds without sacrificing her soft ride or rock-solid hull. Hatteras hulls are hand-laid with solid fiberglass and vinyl ester resins to provide impact resistance while eliminating the potential for core separation in this crucial area. A network of interlocking vacuum-bagged composite bulkheads and foam-core fiberglass stringers support the solid glass bottom. Captains will appreciate the clear visibility from the helm. The view of the bow is unobstructed, and the entire aft cockpit remains in view even from a seated position. The extended cockpit overhang provides crew with plenty of protection from the sun and gives the captain room to work behind the helm chairs. On the helm console, a recessed box houses a standard suite of electronics that includes VHF, autopilot, depth sounder and chart plotter. Standard electronic single-lever controls and a pod-style helm give the 50 a custom feel. Twin bench seats provide seating for guests and copious rod storage, and a top-loading insulated drink box keeps the captain happy on the hottest of days. In the 135-square-foot cockpit, Hatteras provides the fishing gear you need. The bait and tackle center includes plenty of drawer storage for gear as well as a top-loading bait freezer and sink. An 80-inch fish box with macerator pump will keep the catch on ice, and quick-connect saltwater and freshwater wash down connections ease the cleanup. Four rod holders, dry storage in the salon step, a transom door and a stainless-steel plate for mounting a fighting chair all come standard.

Interior Accommodations

The three stateroom arrangement is incredibly spacious and feature two heads with stall showers, queen walk around berths in the VIP and master staterooms, full featured galley, and expansive salon. Hatteras quality is evident throughout with an abundance of overhead LED lighting, genuine cherry wood bulkheads, cabinetry and fluted valances, Amtico teak and holly galley and head flooring, cedar lined closets, under berth storage, and much more!

Salon

- Custom High Gloss A.J. Originals Coffee Table in Salon
- Whisperwall headliner
- High Gloss Cherry Wood Interior
- Fixed frameless salon windows with tinted safety glass
- Custom L-shaped Salon Sofa with rod storage, loose cushions, armrests and double needle stitching
- Solid wood valances with overhead air conditioning vents
- Full length glass salon door with privacy canvas that snaps in
- Privacy shades throughout the salon

- Over size dinette with solid surface counter top and dual pedestal support
- Salon barrel chair
- Salon Carpeting
- Salon lighting with dimmers
- Salon flat panel television
- Denon Surround Sound receiver
- Denon 5 Disc DVD player
- AV compartment forward that houses the SAT TV receivers

Galley

- Solid surface counter tops
- Sharp convection/microwave oven
- EuroKera 2 burner electric stove
- Molded-in oversized sink with pull-out faucet
- (4) Sub Zero under counter refrigeration/freezer drawers
- Garbage disposal
- Cabinet and drawer storage
- Teak and Holly Amtico flooring
- Forward doghouse oversize storage area

Master Stateroom

- Queen size walk around berth with cedar lined underneath storage
- Built in night stands
- Mirrored bulkhead wall with custom upholstered headboard
- Sharp flat panel television
- Mirrored door back for dressing
- (2) LED reading lights
- Carpeting
- Designer pillows and shams
- Cedar lined hanging locker
- Central vacuum unit
- Tank Tender monitor in master closet
- Cedar lined (4) shelf closet
- SMX AC Controls

Master Head

- Private shower stall with clear entry door and (2) towel bars
- Solid surface vanity tops with molded in sink and faucet

- Mirrored vanity with storage
- Wood trimmed storage closet
- Headhunter toilet
- Towel ring
- Towel bar
- Teak and Holly Amtico flooring
- Exhaust fan
- Plexi mirrored head ceiling

VIP Stateroom

- Center line Queen size walk around berth with lift up storage and 2 drawers
- (2) Hanging lockers
- Outboard overhead storage cabinets to port and starboard
- (2) Overhead speakers
- Overhead port hatch with shad and screen
- Sharp flat panel television
- Lighting
- Mirrored forward bulkhead
- SMX AC Controls

Guest Head

- Private shower stall with clear entry door and towel bar
- Solid surface vanity tops with molded in sink and faucet
- Mirrored vanity with storage
- Headhunter toilet
- Towel ring
- Towel bar
- Teak and Holly Amtico flooring
- Exhaust fan
- Plexi mirrored head ceiling
- (3) Entry points to head: VIP ensuite, Guest stateroom ensuite, and companionway accesses

Fly Bridge

- (2) Stidd Helm Chairs with covers
- (2) Air Blowers
- Bausch American fiberglass hardtop with radar pod, SAT TV dome pod, 36" molded box for CAT MPD displays, Molded in LED running & stern lights, Molded in aft 4 in 1 spreader

lights, 4 white and 2 red LED lights with dimmer

- Custom Great Lakes style aft bridge rail and ladder
- 4 Sided bridge enclosure
- Top loading insulated drink box
- Two bench seats with storage underneath
- Rod Storage space in starboard bench seat
- Pod console with custom wheel and single lever clutch and throttle controls (electronic) with emergency back-up and electric trolling valve control switches
- AC weatherproof receptacle
- Fly bridge cushions look like NEW!!

Electronics

- Garmin 8212 series touch screen chart plotter with fish finder (NEW 2014)
- (2) Raymarine E120 Multi-function Displays (Software updates performed 2014)
- XM Weather
- Raymarine ST60+
- Raystar RS125 GPS/WAAS/differential antenna
- Raymarine 6' 10kw Open Array Radar (72nm range)
- Raymarine DSM300 Digital Sounder
- Raymarine SAT TV System (2 receivers)
- Raymarine CAN100 Marine Cameras (2) in engine room
- Simrad AP26 Autopilot
- Yacht Controller remote
- ACR100 Spotlight
- (2) Icom 604 VHF radios (fly bridge)
- Icom remote VHF Radio - Salon
- Clarion AM/FM/CD Stereo with Polyplaner Speakers
- Kahlenberg horns
- CAT MPD displays in addition to analog gauges
- Bow thruster control pad

Deck and Construction

- 12", 12HP DC Bow Thruster (ABT)
- Blister resistant vinyl ester resin in hull bottom skin coat
- Factory Painted Hull at Topside (Snow White)
- Factory Painted Boot stripe (Black)
- Factory Painted Non-Skid Decks with clear polymeric beads
- Solid Fiberglass Bottom
- Hull Sides and Superstructure laminated with Divinycell Core
- Fiberglass Stringers

- Steel laminated in stringers at key locations to bolt engine mounts
- Engine room bulkheads and decks resin-infused composite construction using PVC foam core with layers of fiberglass on each side
- All hardware chrome on brass or welded and polished 316L stainless steel
- Fiberglass bow pulpit with welded and polished 316L stainless steel anchor chute and roller
- 35 Pound Polished Danforth Anchor
- Simpson Lawrence Windlass
- Freshwater wash down on Foredeck
- Dockside water inlet
- Fender tracks, port & starboard
- Bow rail package
- Powder coated grab rails on cabin side and fly bridge
- Aluminum fly bridge ladder with acrylic steps
- Dual air/electric horn
- Stainless Steel Trim Tabs
- Manganese bronze struts
- 316L/Alloy 22 high-strength rudders
- 7-bladed High Performance Nibral Propellers
- 3" Alloy 22 High Strength Shafts

Electrical System

- Two 24 Volt Banks of heavy duty 12-Volt marine batteries mounted in fire retardant fiberglass boxes
- 240V automatic battery charger
- Automatic paralleling system with switch at helm
- 240V, 50amp, transformer connected retractable shore cord with over-current protection
- AC & DC light fixtures
- AC dimmable lights
- AC duplex outlets with ground fault protection
- AC and DC distribution panels with magnetic circuit breakers
- Hatteras systems monitor with programmable logic controller readout, visual and audible signals for engine, high bilge water, fire warning, fire extinguisher discharge, AC power loss, smoke detectors and 3/4 full holding tank alarm
- Telephone/CATV inlet
- CAT 17kw freshwater-cooled generator with water lift muffler and sound enclosure

Engine Room/Mechanical

- Water Manifold with centralized shut off valves for sinks and showers
- AC Fluorescent lights

- DC lights
- DC exhaust blower
- Fiberglass air intake system with baffling and filters
- Polyethylene water lines
- FM200 fixed fire extinguishing system
- Pressurized 24V DC freshwater pump with central charcoal filter
- Freshwater fill hose
- 24 Volt DC bilge and sump pumps, Four total at 2000gph each with float switches
- Fiberglass Holding tanks
- Electric fuel transfer system with filtration and dry tank protection for pump
- USCG A1 U.L. Marine approved fuel lines
- Seawater pressure system with DC pump
- Air Conditioning, 41,000 BTU, with reverse cycle heating with A/C compressors and individually controlled by SMX controls
- Painted polyurethane engine room and bilges
- Isolated discharge sea chests
- Pultruded fiberglass rudder shelf
- Racor fuel filters
- Electric fuel priming pumps
- Oil Change System (engine/gear/generator)
- Fuel transfer system

Cockpit

- Molded fiberglass cockpit at 135 square feet
- Port and Starboard hatches to lazarette and fuel tank connections
- ISO standard scuppers in cockpit and cockpit hatches
- Transom hawse pipes
- Transom door
- Retractable shore cord
- Seawater and Freshwater wash down outlets with Hatteras quick connects
- Shore water connections with pressure reducing valve
- Bait and tackle center with tackle drawers (starboard)
- Bait freezer, drop-in
- Storage console with drawers below (port)
- Removable 80" fish box with macerator, flush in deck
- Door and hatch with chrome plated brass lock to engine compartment
- DC overhead lights under fly bridge overhang
- Aluminum mounting plate laminated in deck for fighting chair
- Polished 316L stainless-steel rod holders, flush mount, set of 4
- Polyplanar stereo speakers with volume control
- Cockpit sink and faucet
- Aft slant cockpit canvas

- Swim Platform

Items of Consideration

- Props scanned and prop speed applied (2014)
- Recent full engine and generator services performed (2014)
- Upgraded and Updated electronics package
- Sofa back cushions re-stuffed (2014)
- New Cutlass bearings installed (2014)
- Ship's batteries replaced (2014)
- Bottom paint renewed (2014)
- New swim platform installed (2014)
- Yacht Controller added (2014)
- Fire systems refreshed and recertified (2014)
- Winslow 6 person life raft added (2014)
- Gregory Poole updated the C-18 engine software (2014)

Exclusions

OWNERS PERSONAL ITEMS OR ANY OTHER ITEM NOT LISTED HEREIN AT TIME OF VIEWING.

Exclusions

Owner's personal belongings.

Disclaimer

The Company offers the details of this vessel or yacht in good faith but cannot guarantee or warrant the accuracy of this information nor warrant the condition of the vessel. A buyer should instruct his representatives, agents, or his surveyors, to investigate such details as the buyer desires validated. This vessel or yacht is offered subject to prior sale, price change, or withdrawal without notice.

PHOTOS

Salon



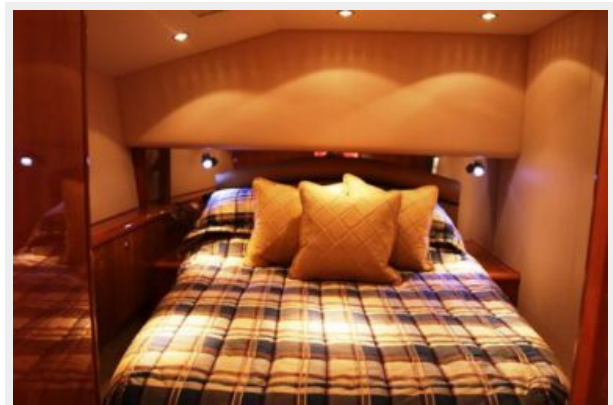
Galley



Salon and Dinette



Master Stateroom



Salon



Salon



Salon



Salon and Galley



Dinette



VIP Stateroom



VIP Stateroom



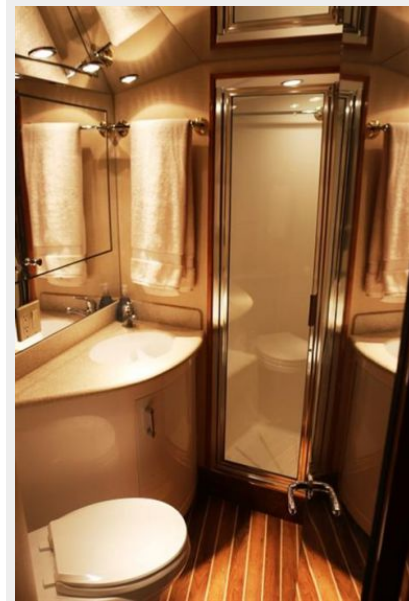
Guest Stateroom Port



Guest Head



Guest Head



Washer/Dryer Unit



Electrical Panel



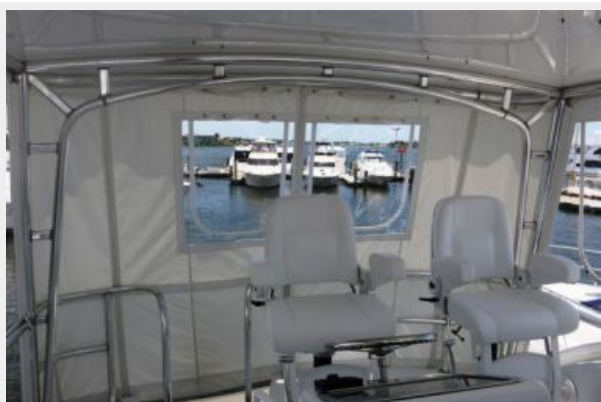
Helm



Flybridge



Flybridge



Flybridge Seating



Flybridge Seating and Drink Box



Cockpit Entry Door



Cockpit Prep and Freezer



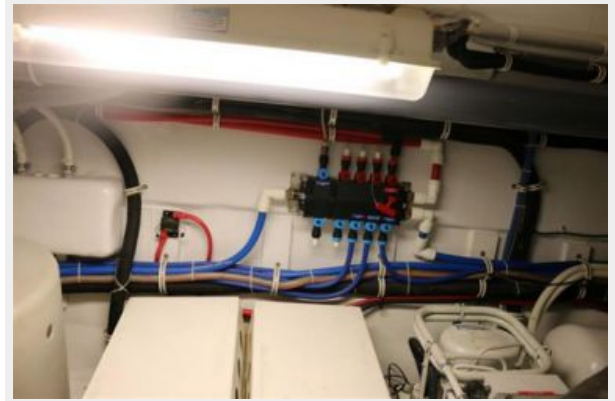
Cockpit Prep and Tackle



Engine room



Engine room



Port Engine Tag



Port Engine



Starboard Engine Tag



Starboard Engine



Transom



Profile



CONTACTS

Andrey Shestakov, leading yacht broker of the sales department of Shestakov Yacht Sales Inc. Shestakov Yacht Sales Inc., the official representative of the Miami/Fort Lauderdale FL headquarters.

Contact details

Email: andrey@shestakovyachtsales.com

Web: shestakovyachtsales.com/en/

Telephones

USA: +1(954)274-4435

Office hours

Monday – Saturday: **9:00 - 21:00** EDT

Sunday: **closed**

Address



Harbour Towne Marina, 850 NE 3rd St,
STE 213, Dania, FL 33004