

TWO — ALIA YACHTS



Судостроитель: [ALIA YACHTS](#)

Год постройки: 2011

Модель: Cruising/Racing Sailboat

Цена: **ЦЕНА ЯХТЫ ПО ЗАПРОСУ**

Местонахождение: United States

Длина общая: 81' 0" (24.69m)

Ширина: 19' 8" (5.99m)

Мин. осадка: 7' 7" (2.31m)

Макс. осадка: 13' 5" (4.09m)

Крейс. скорость: 9 Kts. (10 MPH)

Макс. скорость: 11 Kts. (13 MPH)

Купить **TWO — ALIA YACHTS** а также выбрать подходящую вам яхту из нашего каталога яхт вам поможет опытный яхтенный брокер Андрей Шестаков. На сегодняшний день компания **Shestakov Yacht Sales Inc.** имеет большое количество яхт в собственном списке продаж, а также тесно сотрудничает со всеми крупными яхтенными производителями по всему миру.

Для того чтобы купить яхту **TWO — ALIA YACHTS** а также проконсультироваться по любому вопросу связанному с покупкой, продажей, чартером яхт позвоните по телефону **+7(918)465-66-44**.

ОГЛАВЛЕНИЕ

ОГЛАВЛЕНИЕ	2
ХАРАКТЕРИСТИКИ	5
Основная информация	5
Размеры	5
Скорость, вместимость и масса	5
Размещение	5
Корпус и палуба	6
Информация о двигателе	6
ПОДРОБНОЕ ОПИСАНИЕ	7
Vessel Overview	7
Accommodations	7
Entertaining Cockpit, Helm Stations & Deck Layout	8
Construction	8
Mechanical Systems	9
Electrical System	9
Monitoring System	10
Entertainment Equipment	10
Navigation and Communication Equipment	10
Spars and Rigging	10
Sails	10
Anchoring Gear	10
Safety Equipment	11
Firefighting	11
Tender and Outboard	11
Additional Equipment	11
Comments	11
Исключения	12
Отказ от ответственности	12

ФОТОГРАФИИ	13
Port Profile	13
Under Sail	13
Boarding & Platform Davits	13
Stern Boarding	13
Transom Locker	13
Aft Deck	13
Covered Cockpits	14
Port Helm Station	14
Helm Station Controls	14
Guest Cockpit Starboard	14
Guest Cockpit Forward	14
Guest Cockpit Port	14
Side Decks	15
Foredeck	15
Recessed Furler	15
Foredeck Aft	15
Side Deck Aft	15
Carbon Anchor Arm	15
Custom SS Hatches	16
Pilothouse Forward	16
Pilothouse Starboard	16
Pilothouse Helm	16
Salon Dining	16
Library Open to Salon	16
Library-Stateroom	17
Library as Stateroom	17
Office Service Area	17
Owner's Stateroom	17

Owner's Stateroom Stbd	17
Owner's Stateroom Port	17
Port Stateroom	18
Port Stateroom Fwd	18
Starboard Stateroom	18
Starboard Stateroom Fwd	18
Engine Room	18
Professional Galley	18
Crew Stateroom	19
Galley Starboard	19
Crew Head	19
Crew Stateroom Aft	19
Under Sail	20
Under Sail	20
Under Sail	20
Night Lights	20
КОНТАКТЫ	21
Контактная информация	21
Телефоны	21
Время работы	21
Адрес	21

ХАРАКТЕРИСТИКИ

Основная информация

Тип судна: Cruising/Racing Sailboat	Модельный год: 2011
Год постройки: 2011	Страна: United States
Кубрик: Да	

Размеры

Длина общая: 81' 0" (24.69m)	Ширина: 19' 8" (5.99m)
Мин. осадка: 7' 7" (2.31m)	Макс. осадка: 13' 5" (4.09m)

Скорость, вместимость и масса

Крейс. скорость: 9 Kts. (10 MPH)	Макс. скорость: 11 Kts. (13 MPH)
Водоизмещение: 109128.81969 Pounds	Чистый вес: 44180 Pounds
Вместимость воды: 220 Gallons	Объем топливного бака: 440 Gallons

Размещение

Всего кают: 4	Всего коек: 10
Спальные места: 8	Всего ком. состава: 4
Каюта капитана: Да	Каюты экипажа: 1
Койки экипажа: 2	Спальных мест экипажа: 2
Комм. состав экипажа: 1	

Корпус и палуба

Материал корпуса: Composite

Материал палубы: Teak

Комплектация корпуса: Other

Цвет корпуса: Black

Дизайнер корпуса: Alan Warwick

Дизайнер экстерьера: Alan Warwick

Информация о двигателе

Двигатели: 1

Производитель: Volvo

Модель: D4 HS63AE

Тип двигателя: Inboard

Тип топлива: Diesel

ПОДРОБНОЕ ОПИСАНИЕ

Vessel Overview

“TWO” is hull #2 of the Alia 82 Series, designed by Alan Warwick as an ultimately fast and easily handled world voyager, with all amenities for gracious living aboard in port, or far at sea. The versatile layout offers owner and guest accommodations and comfort comparable with a far larger yacht. Handling her powerful carbon rig is simple and fully automatic, with hydraulic in-boom and headsail furling, power winches and bow and stern thrusters. Her retractable lift keel offers access to ports normally inaccessible to yachts of with these performance capabilities. TWO’s innovative, seawise design is evident in every detail of her engineering and construction. She can easily be run by a couple, with room for professional crew as desired. The yacht is fully “in class” for MCA Small Yacht Commercial Code for vessels less than 24M.

Accommodations

The interior layout aboard this Alia 82 sets a new standard for form and function in a yacht of this size. Matched grain varnished mahogany joinerwork is blended with teak trim, accented by upholstered panels for a crisp, contemporary décor throughout. Her three large owner and guest staterooms aft are complimented by a convertible library/fourth stateroom adjoining but separate from the raised salon, which is an elegant blend of comfortable entertaining and dining spaces with purposeful communication, navigation and inside control stations as well. Her galley and crew accommodations are separate and forward with private deck access. The Raised Pilothouse Salon is a full width entertaining area with unrestricted 360 degree line of sight visibility to the horizon, a full dining area and settee for 6-8 to port and two comfortable rotating lounge chairs and entertainment equipment to starboard. The forward end table to starboard folds open, housing complete controls for piloting the yacht from inside. The aft end table seconds as the navigation/communication station. A stairway leads aft to the guest accommodations, where the Master Suite is located fully aft, with a queen size centerline berth and side tables, leather couch outboard to starboard, full office desk with phone, internet & printer, and large bureau to port. There is an abundance of natural light and ventilation, via overhead opening ports and large hull ports on each side. The ensuite head is large and well appointed with a full stall shower as well. Moving forward there are two comfortable guest staterooms, each with hull ports and opening ports to deck level, night stand, hanging locker and ensuite heads. The Port Guest Stateroom has a double berth and larger head with full stall shower. The Starboard Guest Stateroom has twin beds that can be converted into a double. All staterooms have individual AC and entertainment controls. Forward of the raised pilothouse, four steps lead down to a well detailed utility area with rotating leather top stools for working at the full length side table outboard, which houses several drawers of auxiliary “Sub Zero” refrigerator/freezers. This area doubles as an elegant serving space that adjoins the galley, immediately forward. A further function allows conversion of the side table to a wide single berth with cushions as an additional sleeping cabin. Two frosted and beveled glass doors separate the utility area from the Fourth Stateroom or Library to port, which has a full “L” shaped settee

outboard to starboard that converts to a wide single berth, coffee table, pop-up television forward and an automatically opening window into the galley, for service. This area is exceptionally well lit by the forward salon windows above, however a ceiling automatically deploys for privacy conversion when used as a stateroom. The level of dual purpose engineering in this regard is absolutely in a class of its own! The Galley is next forward, beautifully finished in burnished stainless, with an abundance of cabinet and counter space. The galley is fitted with the following equipment : •Miele 4 burner gas cook top with convection oven and grill •Miele Microwave •Fischer and Paykel DD6051 Double Dishwasher drawers •In-Sinkerator ISE 55 waste disposal •Broan garbage compactor •Miele CVA3660 Nespresso coffee machine •Blanco BRST60X In-built range hood •Miele WT2670 Front load wash/ Dry machine •4 x Sub Zero refrigerator drawers •2 x Sub Zero Freezer drawers •Isotherm under floor freezer •U-line Ice Maker Immediately forward of the galley on centerline, a ladder companionway provides private deck access for the crew. The Crew Head and shower is next forward, adjoining the Crew Cabin, which has a large double berth, hull ports, opening hatch to the foredeck and ample storage in drawers and lockers.

Entertaining Cockpit, Helm Stations & Deck Layout

Adjoining the pilothouse salon aft, the Entertaining Cockpit has folding convertible varnished teak tables and “U” shaped settees port and starboard, fully protected from the elements by a full width dodger with opening window forward and a fixed bimini cover above. Dual Helm Stations are immediately aft, also protected by bimini covers and with custom control pedestals, carbon steering wheels, and complete controls for all operation, navigation and sail handling functions. Cushioned aft facing seats port and starboard are at the forward end of the sail handling and trimming area, with hydraulic Harken winches port and starboard. Fully aft, the stern rail and transom opens hydraulically to create a Full Swim Platform with well-lit steps to deck level, shower, swim platform, access to lazarette stowage and automatically adjusting dinghy davits. Side decks are wide and uncluttered with staysail sheets led below decks, and waterproof lockers for sail and fender stowage, propane and fueling ports. The Foredeck is also clear with the hydraulic furling headstay, windlass and swing-out carbon arm for anchor deployment, all stowed below deck level for an exceptionally clean deck layout.

Construction

The Alia 82's are built to German Lloyds Letter of Compliance covering hull, deck, superstructure and enclosures. She is fully certified MCA Commercial Code for small yachts. Hull, deck and all structures are constructed of epoxy resins with selected E-Glass and carbon laminates over variable density foam cores. Hull and deck are built over male molds with vacuum bagged laminates. Hull and superstructure are post cured and painted with approved epoxy systems and finished with Awlgrip. WATERTIGHT BULKHEADS: TWO has watertight bulkheads in four locations, plus a collision bulkhead forward of the crew cabin. RUDDER: Composite rudder blade is bonded to the carbon rudder stock, laminate over a mandrel with provision for an emergency tiller outlet at deck level and JP3 bearings at top & bottom and below deck quadrant.

KEEL: The lifting fin keel is fabricated of high tensile steel, suitably painted and faired for underwater use, with the cast lead bulb keel bolted and glass la-p joined. Two custom internal hydraulic cylinders control the lifting keel and a lock cylinder is also included to lock the keel in the up position. Draft with keel up is 2.3M (7.7') and keel down, 4.1M (13'5").

HATCHES & CLOSURES: Stainless Down Under water tight deck hatches, Gebo opening port lights and custom hull ports throughout. The windscreen is four curved panes of 12mm chemically-toughened glass. Pilothouse side glazing, three panels per side, is of the same material.

TEAK DECKING: The complete deck area; entertaining & steering cockpit, side decks, foredeck and inside the opening transom are sheathed in 14mm X 50m quarter sawn teak planks with no visible fastenings, and margin boards surrounding bulwarks, cockpit and cabin structures.

DECK FITTINGS: Deck fittings include polished stainless bow and stern pulpits, stanchions and dodger/bimini framework, with many custom fairleads and other hardware including a number of pop-up docking/mooring cleats. Deck Hardware, tracks and blocks are all Harken, with a carbon Passerelle by Exit Engineering, with custom ss and teak boarding steps and.

Mechanical Systems

ENGINE & DRIVE TRAIN: Volvo D4, 260 hp marine diesel, drives a 3 blade feathering "Max Prop". ZF-63A – 2.8:1 Reduction gear and Aquadrive thrust bearing and propeller shaft, fitted with line cutters.

BOW AND STERN THRUSTERS: Max Power 34 HP retractable bow and stern thrusters, hydraulic.

AIR CONDITIONING: Webasto A/C system with 84,000 BTU capacity and nine air handlers throughout the yacht and controls in each cabin

PUMPS AND PIPEWORK: All pipe work is MCA approved and insulated where required. Reinforced plastic fresh water piping is used throughout with dual Head Hunter pressure water pumps fitted. All bilge pumps are Johnson pumps, with an additional engine driven bilge/firefighting pump as well.

HYDRAULICS: By Max Power, from the power takeoff (PTO) on the generator or DC power pack, the system is supplied by reservoir and all SS piping. All controls are via logic control and touch panels at the helm stations. Systems include:

- Transom door, davits & swim platform
- Carbon anchor arm & Maxwell windlass
- Bow & Stern thrusters
- Headsail furler & main boom furler
- Main halyard and main sheet captive reel winches
- Six Harken deck winches
- Keel control

Electrical System

24 & 12 VOLT DC SYSTEMS: (12) 2 volt Mastervolt MVSV-1200 Gell Cell batteries in series for 1,240 amp. hours (3) Mastervolt Mass 24/100, three step chargers 175 amp engine driven alternator Separate "Buffer" battery bank of (2) Mastervolt AGM-70, 12 Volt gel cells, supplying 12V lighting, navigation lights and equipment. 12 Volt navigation/communication system, (1) Mastervolt MVG-140, 12V gel cell 12 Volt Engine/Generator start batteries, (2) Mastervolt MVG-160, 12V gel cells w/parallel switch.

220 VOLT AC SYSTEM: (2) Mastervolt Mass 24 inverters; 2.5 and 5.0 KWH 25 KVH Whisper Power generator 50 hz shore power system A Sea ___ KWH shore power conditioner

Monitoring System

Free Technics touch screen monitoring system for all systems aboard, w/Audible alarms • All tankage • Bilge & pumps • Hydraulic system • Electrical system • Fire system

Entertainment Equipment

• (6) Samsung Series 6 LCD TV's in each cabin plus upper and lower salon • Upper salon TV mounted on custom lift in starboard console • Kalidescope 4TB media server • Ratel RKB 650 Amplifier • Bose B&W speakers throughout including (4) outdoor speakers • Crestron control system and remote touchscreens in each cabin

Navigation and Communication Equipment

• (3) B&G Zeus 12" chart plotters; navigation station and both helms • Simrad Class "B" AIS • B&G 24 mile radar • B&G H3000 processors with GFD displays at both helms, owner & captain cabins • B&G ACP01 Autopilot and GPD displays at each helm station • B&G Remote vision • B&G carbon masthead unit, thru hull sensors, barometer, compass, etc.. • Simrad VHF, Icom HF and handheld radios • Sailor 250 Fleet broadband system for email/internet/phone • Mast and engine room video cameras • 3G Wi-Fi system with onboard wireless network & printer • (2) Jabsco searchlights w/control at helm stations

Spars and Rigging

Carbon Fiber mast with four sets of aft swept spreaders by Hall Spars, with a Hall "OceanFurl" hydraulic furling boom. Navtec rod standing rigging to Navtec tensioners. • Carbon spinnaker and jockey pole by Hall Spars • Navtec boomvang and backstay hydraulics • Custom spreader antenna mounts • Custom running rigging package

Sails

• Carbon Spectra Mainsail w/carbon battens, custom anti-chafe end caps & UV protection strip • Carbon Spectra heavy AP jib with vertical battens for furling and UV protection • Spectra A3 reaching asymmetric spinnaker w/snuffer • Storm sails • Sail repair kit

Anchoring Gear

70 kg custom stainless CQR Manson anchor is housed below deck on a carbon fibre anchor arm, hydraulically deployed and locking into the stem head fitting. Maxwell HWC 3500 hydraulic

powered windlass and 100M of galvanized chain.

Safety Equipment

Full MCA Class 2 safety gear is included and supplied from Ocean Safety UK. TWO is MCA compliant and ready for transfer of title to Commercial registry. • ACR 406 EPIRB • (17) auto inflate lifejacket/harness/tethers • (2) children auto inflate jackets • (2) Jon Buoy MOB recovery modules on stern rails • (8) Firefly personal strobe/torches and rescue knives • (2) 8 man self-righting liferafts with “grab bags”. • MCA Class fire extinguishers • Fire blanket and LPG gas detector in galley w/auto shutoff • (4) waterproof emergency escape torches • Class approved flare kit • Class approved first aid kit • Fog horn, signal mirror, anchor ball, Echomax radar reflector, hand bearing compass Fortress secondary anchor stowed in chocks in the foredeck locker w/20mm anchor rode and 10M anchor chain.

Firefighting

Automated fire detection and extinguishing system is fitted to the engine room. Smoke detectors are fitted in each cabin, living space and machinery space, with portable extinguishers distributed throughout the vessel.

Tender and Outboard

AB 13VS hard bottom inflatable tender with custom console and 50hp Evinrude outboard, fuel tank, steering wheel, throttle control & start battery. Tender is stored on a custom davits incorporated into the transom door for automatic deployment, or in custom chocks on the foredeck.

Additional Equipment

• Custom running rigging • Mooring lines & fenders • Dive compressor mounts, power supply and tank storage racks in lazarette • Complete deck canvas; Bimini, Dodger & Helm sun awnings • Deck cushions • Tender chocks and cover • Exit Engineering carbon Passerelle and storage bag. • Mechanical spares • Basic tools, rigging & sail repair kit

Comments

‘TWO’ is a remarkable yacht indeed, the result of years of collaboration between Alan Warwick and a very experienced Owner, beginning with a brief that listed all the attributes required for his ideal high performance global cruising yacht. On initial review, her designer determined that the description was for an elegant, 125’ sailing yacht. Over the next eight years, the envelope was reduced in size without sacrifice of any key features, by a number of ingenious design and

engineering innovations and dual-purpose applicability in all aspects of her layout, sail handling systems and engineering. The quality of construction from Alia Yachts is of the highest order in all respects. Her sistership, AIYANA, has been cruising non-stop since her initial launch in late 2010 and has completed three summers in the Mediterranean, four Caribbean winters, a New England summer and this year she's cruising South America with intention to transit the Panama Canal in the fall. She has performed flawlessly. With only 450 hours on her engine and less than 400 hours on her generator, TWO remains in essentially new condition. She is a yacht that lives like a palace and sails like a dream. Without a doubt, she represents an exceptional value on today's brokerage market.

Исключения

При продаже яхты исключаются личные вещи владельца.

Отказ от ответственности

Компания предоставляет описание судна или яхты добросовестно, но не может гарантировать точность этой информации, а также не ручается за техническое состояние. Покупатель должен проинструктировать своих агентов или оценщиков исследовать представленную информацию более подробно, по собственному желанию. Продажа судна или яхты, изменение цены или снятие с продажи будет происходить без предварительного уведомления.

ФОТОГРАФИИ

Port Profile



Under Sail



Boarding & Platform Davits



Stern Boarding



Transom Locker



Aft Deck



Covered Cockpits



Port Helm Station



Helm Station Controls



Guest Cockpit Starboard



Guest Cockpit Forward



Guest Cockpit Port



Side Decks



Foredeck



Recessed Furler



Foredeck Aft



Side Deck Aft



Carbon Anchor Arm



Custom SS Hatches



Pilothouse Forward



Pilothouse Starboard



Pilothouse Helm



Salon Dining



Library Open to Salon



Library-Stateroom



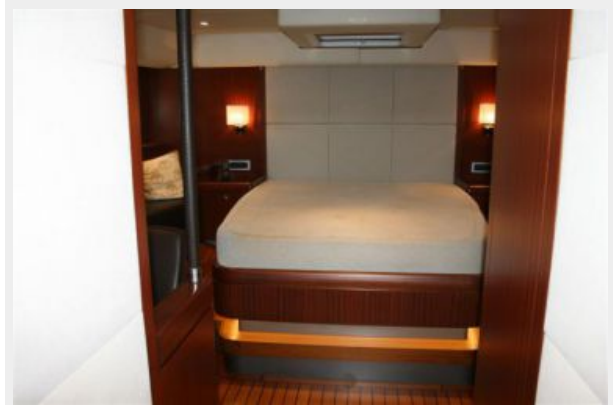
Library as Stateroom



Office Service Area



Owner's Stateroom



Owner's Stateroom Stbd



Owner's Stateroom Port



Port Stateroom



Port Stateroom Fwd



Starboard Stateroom



Starboard Stateroom Fwd



Engine Room



Professional Galley



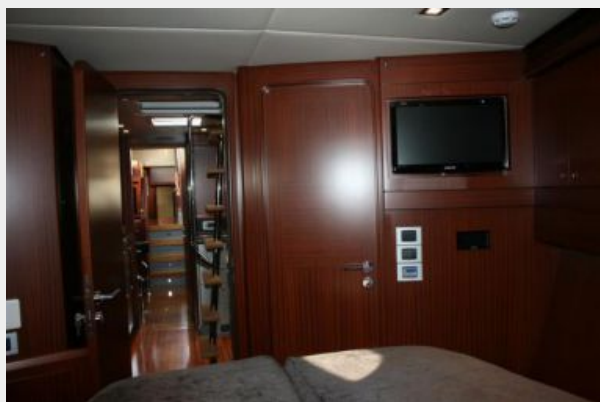
Galley Starboard



Crew Stateroom



Crew Stateroom Aft



Crew Head



Under Sail



Under Sail



Under Sail



Night Lights



КОНТАКТЫ

Андрей Шестаков (Andrey Shestakov) – ведущий яхтенный брокер отдела продаж яхт и судов компании Shestakov Yacht Sales Inc. Официальный представитель Shestakov Yacht Sales Inc. для русскоговорящих клиентов в центральном офисе компании в Майами/Форт Лодердейл/Флорида/США.

Контактная информация

Email: andrey@shestakovyachtsales.com

Web: shestakovyachtsales.com

Телефоны

Краснодарский край: **+7(918)465-66-44**

США, Майами, Флорида: **+1(954)274-4435**

Время работы

Понедельник – Суббота: **9:00 - 21:00**
EDT

Воскресенье: **Закрито**

Адрес



Harbour Towne Marina, 850 NE 3rd St,
STE 213, Dania, FL 33004