

ODETTE — BENETEAU



Builder: BENETEAU

LOA: 41' 0" (12.50m)

Year Built: 1996

Model: Center Cockpit

Price: PRICE ON APPLICATION

Location: United States

Our experienced yacht broker, Andrey Shestakov, will help you choose and buy a yacht that best suits your needs **ODETTE — BENETEAU** from our catalogue. Presently, at Shestakov Yacht Sales Inc., we have a wide variety of yachts available on our sale's list. We also work in close contact with all the big yacht manufacturers from all over the world.

If you would like to buy a yacht **ODETTE — BENETEAU** or would like help answering any questions concerning purchasing, selling or chartering a yacht, please call **+1(954)274-4435**

TABLE OF CONTENTS

TABLE OF CONTENTS	2
SPECIFICATIONS	4
Overview	4
Basic Information	4
Dimensions	4
Accommodations	4
Hull and Deck Information	4
Engine Information	4
DETAILED INFORMATION	5
Accommodations	5
Galley	5
Salon	5
Master Stateroom with Private Head and Shower	5
Forward Stateroom with Separate Head & Shower	6
Navigation Station	6
Electronics	6
Cockpit and Aft Deck	6
Deck and Winches	7
Domestic Water System	7
Engine and Engine Compartment	7
Electrical Equipment	7
Additional	7
Exclusions	8
Disclaimer	8
PHOTOS	9
CONTACTS	13
Contact details	13
Telephones	13

Office hours

13

Address

13

SPECIFICATIONS

Overview

Basic Information

Category: Center Cockpit

Sub Category: Cruising Sailboat

Model Year: 1996

Year Built: 1996

Country: United States

Dimensions

LOA: 41' 0" (12.50m)

Accommodations

Total Cabins: 2

Hull and Deck Information

Hull Material: Fiberglass

Engine Information

Manufacturer: Yanmar

DETAILED INFORMATION

Accommodations

The rich cherry interior, with green upholstery and curtains, is elegant and warm. To starboard, the raised settee ensures a pleasant view. The oval table leaf can be lowered. A table well and cupboards in the salon and galley are fitted for bottle storage. The navigation station to port includes a chart table with stowage, bookshelves, VHF, stereo/CD/radio with ipod jack, and secondary Northstar GPS. In the forward cabin, there is a large double berth to starboard with drawers underneath, a hanging locker and settee with stowage below to port, shelf storage on both sides and an ensuite head with shower. In the passageway aft to port, which runs alongside the large engine compartment, the Oceanis 40CC's galley is well equipped for gourmet cooking: freezer, refrigerator, solid surface countertop, double stainless steel sink with covers, under-sink trash bin, three-burner propane stove, oven, and many cupboards and drawers on both sides

Galley

Solid work surface with molded wood fiddle - Twin rectangular S-S sinks - Hot - cold water mixer tap - Foot pump for icebox discharge - Trash bin - 3 sliding vegetable baskets - 3 burner gimbaled stove and S-S protection bar - Cutlery drawer - 2 cupboards to port, lockers along the side of hull - Top loading 2 compartment freezer - fridge, with 12V evaporator - 2 opening portholes 15" x 8" in coaming with curtains and screens - Opening plexiglass panel in coachroof - Lighting by halogen lamps with independent switches and fluorescent tube.

Salon

Comfortable Salon Area Settee - Lockers outboard along hull sides - Reading lights - Fixed 6'7" x 8" porthole with curtain - Vent To Starboard - Raised deck salon for panoramic visibility - Shaped settee with cushions with 6.0" thick, medium density foam and backrests - Salon table with folding leaf and integrated bottle storage - Lockers and cupboards along hull sides - Wood hull lining - Lockers underneath settee - Halogen lighting with independent switch - Opening Plexiglas panel in coachroof 23" X 23" with curtain and screen - Padded deckhead lining - Bookcase - bar storage.

Master Stateroom with Private Head and Shower

Aft Owner's Stateroom - Central double bed 6'7" x 4'11", 4.7" thick mattress - 2 symmetrical hanging lockers - Stowage space - lockers along side of hull to port and starboard - Step either side of the bed for easy access - Vanity - desk with mirror - Wood hull lining - Padded deckhead lining - 2 opening portholes 15" x 8" in coaming with curtains and screens - 1 opening porthole 15" x 8" in transom with curtain and screen - 1 opening porthole in aft coaming 27" x 8" with

curtain and screen- 2 dorade type vents - Lighting from halogen lights with independent switches and reading lights. *Owner's Private Head* - Compartment molded in one piece to be waterproof and easy to clean - Marine toilet with polyester lid - Wash basin with hot & cold water mixer tap - Mirror - Cupboards - Shower with hot & cold water mixer tap - Electric pump for used water - 2 opening portholes in coaming 15" x 8" with screens - Opening plexiglass panel in coachroof - Halogen lamp with fluorescent tube.

Forward Stateroom with Separate Head & Shower

Forward Owner's Cabin - 6'3" x 4'7" double bed, 4.7" thick mattress - lockers beneath bed - Hanging locker - Wood hull lining - Padded deckhead lining - 1 opening porthole in coaming (23" x 18") with curtain and screen - 2 opening portholes in coaming (13" x 7") with curtains and screens - Halogen lamps with independent switches and reading lights - 1 settee with storage below. *Forward Head Compartment* - One piece molded compartment for waterproofing and easy maintenance - Marine toilet with polyester lid - Bathroom accessories - Wash basin with hot - cold mixer tap - Shower - Mirror, cupboard - Electric pump for discharge of water - Opening porthole in coachroof 23" x 18" with curtain - Fluorescent tube lighting.

Navigation Station

Separate chart table with settee, chart stowage and molded wood fiddle - Bookshelves - Lockers - 12V, 16 functions hinged electrical panel - Hinged panel for onboard electronics – AM/FM/CD player with ipod jack – VHF - 12V Plug - Drawer - Seat - Fixed porthole in coaming with curtain - Halogen lamp with independent switch - Red watch light .

Electronics

Raymarine E120 Chartplotter with dual display capability, Autopilot ST6000 with remote control and wind/speed/depth instruments pedestal mounted - 2-VHF handsets in cockpit and Nav station - Secondary Northstar GPS at Nav station.

Cockpit and Aft Deck

The **Mid-cockpit** is large and comfortable. The cockpit seats, cockpit sole and transom steps were redone in Nu-Teak for easy maintenance in 2012. The central pedestal includes a leather wrapped wheel. Hydraulic steering wheel, Control panel on cockpit bench seat facade - Nuteak slatted cockpit benches - 1 winch handle box - 2 winch handles - 2 sidedeck lockers (one for propane) - 2 lockers for mooring lines and fenders on transom - Fixing points on aft coachroof for liferaft - Emergency tiller - Transom - Nuteak slatted step in transom - Folding 18-12 S-S swim ladder with wooden steps – Hot/cold cockpit shower - Teak Cockpit table - Teak rubbing strake either side of hull Spars – 4 fleece covered fenders – 4 dock lines.

Deck and Winches

Starting forward: Stainless steel stemhead fitting with 2 fairleads and tilting roller - Open stainless steel pulpit. 1000W electric windlass with up - down control - Self-bailing anchor well with twin opening hatches - 35lb Bruce anchor w/150' 2B chain - Bulwark surrounding the deck with teak cap - 8 anodized aluminum mooring cleats: 2 forward, 2 midships, 4 aft - Forestay chainplate with slats on the stemhead fitting - 2 chromed bronze lower shroud chainplate, 2 Beneteau streamlined chromed bronze shroud chainplates - Anodized aluminum identified fuel and water fillers - Stainless steel stanchions with two sets of covered stainless steel lifelines - Lateral opening lifelines - Stern pulpit w/opening lifelines - 4 teak handrails on coachroof - 4 dorade vents - Forward cockpit coaming for dodger - 2 genoa sheet tracks with adjustable cars - 2 genoa sheet turning blocks - Mainsheet track with adjustable car - 1 Lewmar 40C STO halyard and maneuvering winch - 4 Spinlock XL double stoppers for halyards and maneuvering lines - 2 Lewmar 54C STO genoa sheet winches - 1 Lewmar 40C STO mainsheet winch.

Domestic Water System

Manual bilge pump - Electric bilge pump - 132 gal. fresh water capacity in 2 rigid tanks with hull liner - Valves for tank selection – 12 gal. water heater run off engine and shore power - Pressurized fresh water unit with compression tank and filter- 2 electric discharge pumps for showers.

Engine and Engine Compartment

50 hp Yanmar FWC diesel - Single lever engine control - Engine chassis integral with hull liner - Engine control panel in cockpit - Engine compartment insulated by lead foam – Venting system - Space for generator in engine compartment - 53 gal. fuel tank - Fuel - water filter on fuel circuit - Stainless steel shaft protected by skeg – MaxiProp – Spare triple bladed prop.

Electrical Equipment

12V Electrical circuit – 3 12V deepcycle batteries for service with circuit breaker - Starting Isolation - 110V 40 amp battery charger - 12V 16 function Electrical panel in galley- Overhead halogen lighting, reading lights and fluorescent tubes - Cockpit lighting - Navigation lights - Masthead light - Deck spots on boom - 110V shore power plug - 150' shore power cord - Electrical panel 110V - 4 - 110V- sockets.

Additional

Two zone heat/air conditioning – Dinghy davits - 10' RIB AB dinghy – 15hp Yanmar outboard motor - Extra 3 blade prop - Polyester coachroof dodger with Strataglass and opening panel -

Certificate of Individual Bureau Veritas approval - Winter cover- Owner's manuals - Owner's briefcase

Exclusions

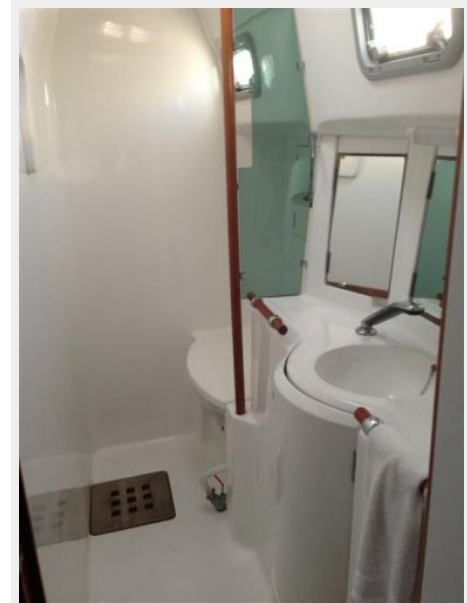
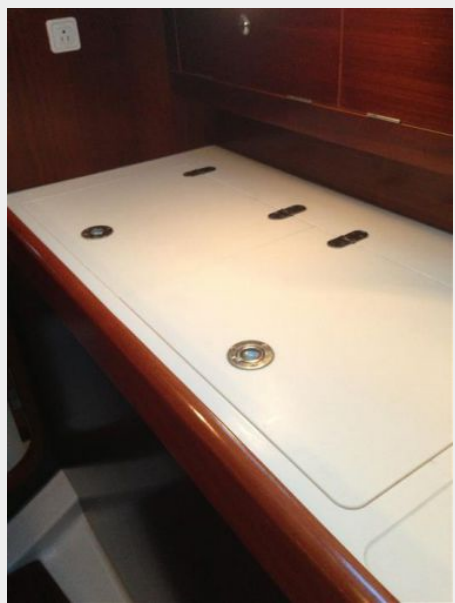
Owner's personal belongings.

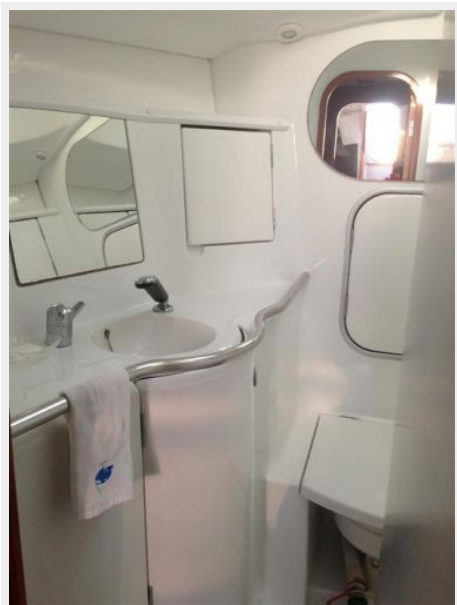
Disclaimer

The Company offers the details of this vessel or yacht in good faith but cannot guarantee or warrant the accuracy of this information nor warrant the condition of the vessel. A buyer should instruct his representatives, agents, or his surveyors, to investigate such details as the buyer desires validated. This vessel or yacht is offered subject to prior sale, price change, or withdrawal without notice.

PHOTOS









CONTACTS

Andrey Shestakov, leading yacht broker of the sales department of Shestakov Yacht Sales Inc. Shestakov Yacht Sales Inc., the official representative of the Miami/Fort Lauderdale FL headquarters.

Contact details

Email: andrey@shestakovyachtsales.com

Web: shestakovyachtsales.com/en/

Telephones

USA: +1(954)274-4435

Office hours

Monday – Saturday: **9:00 - 21:00** EDT

Sunday: **closed**

Address



Harbour Towne Marina, 850 NE 3rd St,
STE 213, Dania, FL 33004