

AEROCRUISER 38 II FLY (A) — DANISH YACHTS



Builder: DANISH YACHTS

Year Built: 2014

Model: Mega Yacht

Price: PRICE ON APPLICATION

Location: Denmark

LOA: 125' 0" (38.10m)

Beam: 25' 0" (7.62m)

Max Draft: 4' 4" (1.32m)

Max Speed: 65 Kts. (75 MPH)

Our experienced yacht broker, Andrey Shestakov, will help you choose and buy a yacht that best suits your needs **AEROCRUISER 38 II FLY (A) — DANISH YACHTS** from our catalogue. Presently, at Shestakov Yacht Sales Inc., we have a wide variety of yachts available on our sale's list. We also work in close contact with all the big yacht manufacturers from all over the world.

If you would like to buy a yacht **AEROCRUISER 38 II FLY (A) — DANISH YACHTS** or would like help answering any questions concerning purchasing, selling or chartering a yacht, please call **+1(954)274-4435**

TABLE OF CONTENTS

TABLE OF CONTENTS	2
SPECIFICATIONS	5
Overview	5
Basic Information	5
Dimensions	5
Speed, Capacities and Weight	5
Accommodations	5
Hull and Deck Information	6
Engine Information	6
DETAILED INFORMATION	7
Flybridge Deck	7
Aft Deck	7
Aft Deck Day Head	7
Bow Area	8
Saloon	8
Wheelhouse	9
Master Cabin	10
VIP Cabin	10
Guest Cabins	11
TV Lounge / Guest Cabin	11
All En-Suites	11
Galley, Crew Area & Laundry	12
Garage & Deck	12
Exclusions	13
Disclaimer	13
PHOTOS	14
Port High Aft View Close Up	14
Port High Aft View	14

STB Low Aft View Moving	14
STB Low Aft View Moving Close Up	14
High Aerial Aft Space	14
High Aerial Bow Space	14
Bridge Lights	15
Saloon Dining 1	15
Saloon Looking Aft	15
TV Saloon	15
Galley 2	15
Galley 1	15
Master with TV	16
Galley 3	16
Master 1	16
Master 2	16
Master Bathroom	16
Bathroom Detail	16
VIP	17
Starboard Twin King Size	17
Captain Cabin	17
Port Twin	17
Crew Cabin 1	17
Tender in Garage	17
Engine Room 1	18
Engine Room 2	18
AeroCruiser 38 II Flybridge GA Plans	18
Engine Room 3	18
CONTACTS	19
Contact details	19
Telephones	19

Office hours	19
Address	19

SPECIFICATIONS

Overview

This is AeroCruiser 38 II Fly: the latest Superyacht from Danish Yachts.

Basic Information

Category: Mega Yacht

Model Year: 2014

Year Built: 2014

Country: Denmark

Dimensions

LOA: 125' 0" (38.10m)

Beam: 25' 0" (7.62m)

Max Draft: 4' 4" (1.32m)

Speed, Capacities and Weight

Cruise Speed RPM: 10 Kts.

Max Speed: 65 Kts. (75 MPH)

Gross Tonnage: 165 Pounds

Water Capacity: 1495.742158424 Gallons

Fuel Capacity: 5466.248099984 Gallons

Accommodations

Total Cabins: 5

Sleeps: 10

Captain Cabin: True

Crew Berths: 3

Crew Sleeps: 6

Hull and Deck Information

Hull Material: Carbon Composite

Exterior Designer: Espen Oino

Interior Designer: Artline (Holland)

Engine Information

Manufacturer: MTU

Fuel Type: Diesel

DETAILED INFORMATION

Flybridge Deck

- Raised sunbathing area with cushions
- Large Spa tub
- Custom cocktail wetbar with worktop and storage
- Built-in seating area on port side with fixed dining table
- Built-in seating area on starboard side with coffee table
- Refrigerator
- Ice maker
- Sink with faucet
- High level spotlights
- Low level spotlights
- Exterior speakers
- Helm position with seating fore of flybridge
- Staircase down to aft deck
- Stainless steel safety rails around top of stairs
- Stainless steel aft and side safety rails

Aft Deck

- High/low carbon / wood dining table with embossed logo
- 7 heavy teak dining chairs
- 2 separate outdoor seating areas
- Raised sunbathing area with cushions
- Retractable rigid bimini with soft canopy
- High level spotlights
- Low level spotlights
- Exterior speakers
- Stainless steel side and aft safety rails
- Storage compartments port & starboard
- Custom Day Head
- Access to saloon and garage

Aft Deck Day Head

- Custom design Day Head
- Extractor fan
- Toilet
- Washbasin

- Hot & cold water faucet
- Soap dispenser
- Towel rail
- Toilet roll holder
- Toilet brush and holder
- Mirror
- Air conditioning outlet
- Overhead lighting
- Razor socket

Bow Area

- Sofa seating area
- Raised sunbathing area with cushions
- Anchor windlass
- Anchor hatch and locker
- Side hatch storage compartments with shelving
- Access to roof

Saloon

- 50" TV with entertainment system, retracting / swivel base
- Radio / CD player
- Integrated speakers throughout
- Custom leather-finish L-shaped sofa with cushions
- Custom cocktail table with glass insert
- Custom dining table, tan faux leather finish
- Custom leather-finish seating area for 6 people
- 4 leather-finish chairs for dining table
- Custom design bar area
- 3 leather-finish high bar-stools
- Ice making machine
- Wine refrigerator
- Sink with tap
- Sideboard with storage
- Storage cabinets all along starboard side
- AC sockets
- Large glass windows with automatic controlled blinds
- Air conditioning
- Varnished teak flooring
- High level spotlights
- Low level spotlights

- Two multi-color lighting panels
- Chinaware, glassware & cutlery - complete sets for 12 people
- Stowage for all chinaware / glassware / cutlery
- Paper art feature in stairwell - hand made and bespoke
- Access to Wheelhouse, exterior Aft Deck and interior Lower Deck
- iPod docking station

Wheelhouse

- Double seating helm position
- 4-passenger high-view seating area
- Chart table and storage
- Interior speakers
- Iridium + V-Sat Satcom
- 2 VHF radio telephones
- MF/HF SSB
- GMDSS VHF
- Aeronautical VHF
- Telephone exchange and data points
- AIS
- Chart plotter display
- Chart light
- Automatic pilot
- Gyro compass
- Satellite compass
- AC sockets
- Engine monitoring
- Engine ignitions
- Navtex
- Radar
- GPS
- Echo sounder
- Depth & speed display
- Touchscreen monitoring of boat systems
- Speed log
- Wind instruments
- VDR
- Wheelhouse mult-function office
- Overhead lighting
- Low-level floor lights
- Air conditioning
- Exterior Designer - Espen Oino

Master Cabin

- Double berth with storage in base
- Custom king size bed with pillows and bedspread
- Bedside cabinets with storage
- Wardrobes with hanging rail and low-level storage
- Wardrobe lighting
- 40" TV and AV equipment
- Hidden bar with stowage
- Bedside lights
- Overhead lighting with dimmers
- Skylight windows with remote controlled blinds
- Telephone and data points
- Fitted carpet
- Side windows with blinds
- Drawers for storage
- Safe deposit box
- Custom shelving
- Air conditioning
- Office desk and chair
- Leather sofa
- CD / Radio with integrated speakers
- iPod docking station
- High-level spotlights
- Low-level spotlights
- AC sockets
- Emergency escape hatch
- Doors leading to en-suite and corridor

VIP Cabin

- 23" TV and AV equipment
- Custom-style bed, pillows and bedspread
- Bedside cabinets with storage
- Storage units
- Wardrobes with hanging rail and lighting
- Safe deposit box
- Telephone and data points
- Fitted carpet
- Side windows with blinds
- Drawers for storage
- Shelving
- Air conditioning

- iPod docking station

Guest Cabins

- 23" TV and AV equipment
- Spring mattress, pillows and bedspread
- Bedside cabinets with storage
- Storage units
- Wardrobes with hanging rail and lighting
- Safe deposit box
- Telephone and data points
- Fitted carpet
- Side windows with blinds
- Drawers for storage
- Shelving
- Air conditioning
- iPod docking station

TV Lounge / Guest Cabin

- 40" TV and AV equipment
- Custom leather-finish seating area
- CD / Radio with integrated speakers
- iPod docking station
- High-level spotlights
- Low-level spotlights
- Door leading to en-suite and corridor
- Telephone and data points
- Access to private en-suite

All En-Suites

- Razor socket
- Extractor fan
- Overhead lighting
- Washbasins with clear silicon base
- Marble backsplash
- Taps
- Shower cubicle with door
- Hot & cold water faucets
- Integrated laundry basket

- Soap dispenser
- Towel rails
- Toilet roll holder
- Toothbrush holders
- Robe hooks
- Toilet brush and holder
- Large mirror
- Speakers with remote
- Air conditioning

Galley, Crew Area & Laundry

- 40" TV with entertainment system (crew mess)
- 26" TV with entertainment system (Capt cabin)
- 4 x 19" Flatscreen TV with entertainment systems (crew cabins)
- Clothes washer
- Tumble dryer
- Hot plates
- Full integrated grill & oven
- Microwave oven
- Extraction fan
- Full height refrigerator
- Full height freezer
- Dishwasher
- Stand-alone coffee machine
- Induction cooker
- Overhead lighting
- CD / Radio with speakers
- iPod docking station
- AC sockets
- Large sink
- Non-slip safety flooring
- Storage cabinets and overhead lockers
- Complete chinaware / glassware / cutlery for 8 crew
- Fixed dinette table with sofa
- Portholes with blinds
- Rubbish bins
- Assorted electrical cooking / food preparation equipment

Garage & Deck

- Williams 385 Tender (optional)

- Tender launch and retrieval system
- Side boarding ladder
- Retractable passarelle
- Retractable bathing ladder from transom swimming platform
- 2 Liferrafts
- 4 Lifebuoys
- Emergency fire pump
- 2 EPIRM
- 2 SART
- Watermist protection for interior
- FM-200 protection for engine room
- Sprinkler protection for tender garage
- Medicine chest category "C"
- Medical kit SOLAS B with oxygen and defibrillator
- DESIM fire / anchor wash pump

Exclusions

Owner's personal belongings.

Disclaimer

The Company offers the details of this vessel or yacht in good faith but cannot guarantee or warrant the accuracy of this information nor warrant the condition of the vessel. A buyer should instruct his representatives, agents, or his surveyors, to investigate such details as the buyer desires validated. This vessel or yacht is offered subject to prior sale, price change, or withdrawal without notice.

PHOTOS

Port High Aft View Close Up



Port High Aft View



STB Low Aft View Moving



STB Low Aft View Moving Close Up



High Aerial Aft Space



High Aerial Bow Space



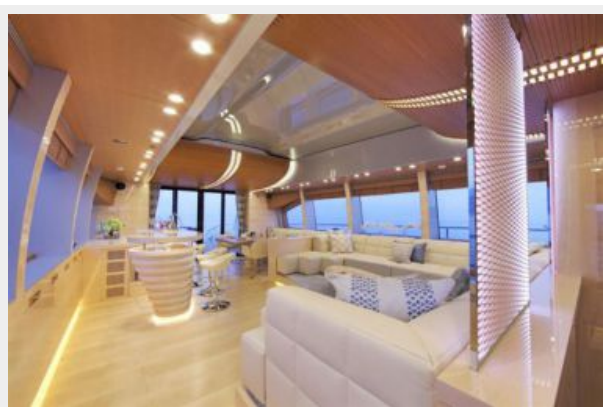
Bridge Lights



Saloon Dining 1



Saloon Looking Aft



TV Saloon



Galley 1



Galley 2



Galley 3



Master with TV



Master 1



Master 2



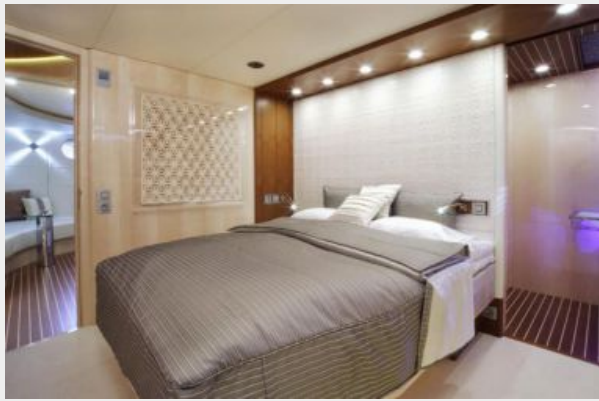
Master Bathroom



Bathroom Detail



VIP



Starboard Twin King Size



Port Twin



Captain Cabin



Crew Cabin 1



Tender in Garage



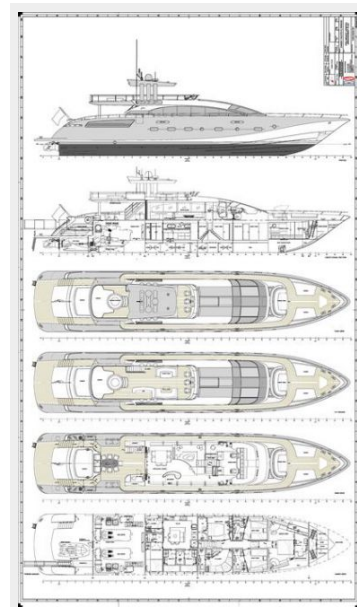
Engine Room 1



Engine Room 2



AeroCruiser 38 II Flybridge GA Plans



Engine Room 3



CONTACTS

Andrey Shestakov, leading yacht broker of the sales department of Shestakov Yacht Sales Inc. Shestakov Yacht Sales Inc., the official representative of the Miami/Fort Lauderdale FL headquarters.

Contact details

Email: andrey@shestakovyachtsales.com

Web: shestakovyachtsales.com/en/

Telephones

USA: +1(954)274-4435

Office hours

Monday – Saturday: **9:00 - 21:00** EDT

Sunday: **closed**

Address



Harbour Towne Marina, 850 NE 3rd St,
STE 213, Dania, FL 33004