

AEROCRUISER 38 II FLY (A) — DANISH YACHTS



Судостроитель: DANISH YACHTS

Год постройки: 2014

Модель: Мега-яхта

Цена: ЦЕНА ЯХТЫ ПО ЗАПРОСУ

Местонахождение: Denmark

Длина общая: 125' 0" (38.10m)

Ширина: 25' 0" (7.62m)

Макс. осадка: 4' 4" (1.32m)

Макс. скорость: 65 Kts. (75 MPH)

Купить **AEROCRUISER 38 II FLY (A) — DANISH YACHTS** а также выбрать подходящую вам яхту из нашего каталога яхт вам поможет опытный яхтенный брокер Андрей Шестаков. На сегодняшний день компания **Shestakov Yacht Sales Inc.** имеет большое количество яхт в собственном списке продаж, а также тесно сотрудничает со всеми крупными яхтенными производителями по всему миру.

Для того чтобы купить яхту **AEROCRUISER 38 II FLY (A) — DANISH YACHTS** а также проконсультироваться по любому вопросу связанному с покупкой, продажей, чартером яхт позвоните по телефону **+7(918)465-66-44**.

ОГЛАВЛЕНИЕ

ОГЛАВЛЕНИЕ	2
ХАРАКТЕРИСТИКИ	5
Обзор	5
Основная информация	5
Размеры	5
Скорость, вместимость и масса	5
Размещение	5
Корпус и палуба	6
Информация о двигателе	6
ПОДРОБНОЕ ОПИСАНИЕ	7
Flybridge Deck	7
Aft Deck	7
Aft Deck Day Head	7
Bow Area	8
Saloon	8
Wheelhouse	9
Master Cabin	10
VIP Cabin	10
Guest Cabins	11
TV Lounge / Guest Cabin	11
All En-Suites	11
Galley, Crew Area & Laundry	12
Garage & Deck	12
Исключения	13
Отказ от ответственности	13
ФОТОГРАФИИ	14
Port High Aft View Close Up	14
Port High Aft View	14

STB Low Aft View Moving	14
STB Low Aft View Moving Close Up	14
High Aerial Aft Space	14
High Aerial Bow Space	14
Bridge Lights	15
Saloon Dining 1	15
Saloon Looking Aft	15
TV Saloon	15
Galley 2	15
Galley 1	15
Master with TV	16
Galley 3	16
Master 1	16
Master 2	16
Master Bathroom	16
Bathroom Detail	16
VIP	17
Starboard Twin King Size	17
Captain Cabin	17
Port Twin	17
Crew Cabin 1	17
Tender in Garage	17
Engine Room 1	18
Engine Room 2	18
AeroCruiser 38 II Flybridge GA Plans	18
Engine Room 3	18
КОНТАКТЫ	19
Контактная информация	19
Телефоны	19

Время работы	19
Адрес	19

ХАРАКТЕРИСТИКИ

Обзор

This is AeroCruiser 38 II Fly: the latest Superyacht from Danish Yachts.

Основная информация

Тип судна: Мега-яхта

Модельный год: 2014

Год постройки: 2014

Страна: Denmark

Размеры

Длина общая: 125' 0" (38.10m)

Ширина: 25' 0" (7.62m)

Макс. осадка: 4' 4" (1.32m)

Скорость, вместимость и масса

Крейсерская скорость поворота: 10 Kts. Макс. скорость: 65 Kts. (75 MPH)

Чистый вес: 165 Pounds

Вместимость воды: 1495.742158424
Gallons

Объем топливного бака: 5466.248099984
Gallons

Размещение

Всего кают: 5

Спальные места: 10

Каюта капитана: Да

Койки экипажа: 3

Спальных мест экипажа: 6

Корпус и палуба

Материал корпуса: Carbon Composite **Дизайнер экстерьера:** Espen Oino

Дизайнер интерьера: Artline (Holland)

Информация о двигателе

Производитель: MTU

Тип топлива: Diesel

ПОДРОБНОЕ ОПИСАНИЕ

Flybridge Deck

- Raised sunbathing area with cushions
- Large Spa tub
- Custom cocktail wetbar with worktop and storage
- Built-in seating area on port side with fixed dining table
- Built-in seating area on starboard side with coffee table
- Refrigerator
- Ice maker
- Sink with faucet
- High level spotlights
- Low level spotlights
- Exterior speakers
- Helm position with seating fore of flybridge
- Staircase down to aft deck
- Stainless steel safety rails around top of stairs
- Stainless steel aft and side safety rails

Aft Deck

- High/low carbon / wood dining table with embossed logo
- 7 heavy teak dining chairs
- 2 separate outdoor seating areas
- Raised sunbathing area with cushions
- Retractable rigid bimini with soft canopy
- High level spotlights
- Low level spotlights
- Exterior speakers
- Stainless steel side and aft safety rails
- Storage compartments port & starboard
- Custom Day Head
- Access to saloon and garage

Aft Deck Day Head

- Custom design Day Head
- Extractor fan
- Toilet
- Washbasin

- Hot & cold water faucet
- Soap dispenser
- Towel rail
- Toilet roll holder
- Toilet brush and holder
- Mirror
- Air conditioning outlet
- Overhead lighting
- Razor socket

Bow Area

- Sofa seating area
- Raised sunbathing area with cushions
- Anchor windlass
- Anchor hatch and locker
- Side hatch storage compartments with shelving
- Access to roof

Saloon

- 50" TV with entertainment system, retracting / swivel base
- Radio / CD player
- Integrated speakers throughout
- Custom leather-finish L-shaped sofa with cushions
- Custom cocktail table with glass insert
- Custom dining table, tan faux leather finish
- Custom leather-finish seating area for 6 people
- 4 leather-finish chairs for dining table
- Custom design bar area
- 3 leather-finish high bar-stools
- Ice making machine
- Wine refrigerator
- Sink with tap
- Sideboard with storage
- Storage cabinets all along starboard side
- AC sockets
- Large glass windows with automatic controlled blinds
- Air conditioning
- Varnished teak flooring
- High level spotlights
- Low level spotlights

- Two multi-color lighting panels
- Chinaware, glassware & cutlery - complete sets for 12 people
- Stowage for all chinaware / glassware / cutlery
- Paper art feature in stairwell - hand made and bespoke
- Access to Wheelhouse, exterior Aft Deck and interior Lower Deck
- iPod docking station

Wheelhouse

- Double seating helm position
- 4-passenger high-view seating area
- Chart table and storage
- Interior speakers
- Iridium + V-Sat Satcom
- 2 VHF radio telephones
- MF/HF SSB
- GMDSS VHF
- Aeronautical VHF
- Telephone exchange and data points
- AIS
- Chart plotter display
- Chart light
- Automatic pilot
- Gyro compass
- Satellite compass
- AC sockets
- Engine monitoring
- Engine ignitions
- Navtex
- Radar
- GPS
- Echo sounder
- Depth & speed display
- Touchscreen monitoring of boat systems
- Speed log
- Wind instruments
- VDR
- Wheelhouse mult-function office
- Overhead lighting
- Low-level floor lights
- Air conditioning
- Exterior Designer - Espen Oino

Master Cabin

- Double berth with storage in base
- Custom king size bed with pillows and bedspread
- Bedside cabinets with storage
- Wardrobes with hanging rail and low-level storage
- Wardrobe lighting
- 40" TV and AV equipment
- Hidden bar with stowage
- Bedside lights
- Overhead lighting with dimmers
- Skylight windows with remote controlled blinds
- Telephone and data points
- Fitted carpet
- Side windows with blinds
- Drawers for storage
- Safe deposit box
- Custom shelving
- Air conditioning
- Office desk and chair
- Leather sofa
- CD / Radio with integrated speakers
- iPod docking station
- High-level spotlights
- Low-level spotlights
- AC sockets
- Emergency escape hatch
- Doors leading to en-suite and corridor

VIP Cabin

- 23" TV and AV equipment
- Custom-style bed, pillows and bedspread
- Bedside cabinets with storage
- Storage units
- Wardrobes with hanging rail and lighting
- Safe deposit box
- Telephone and data points
- Fitted carpet
- Side windows with blinds
- Drawers for storage
- Shelving
- Air conditioning

- iPod docking station

Guest Cabins

- 23" TV and AV equipment
- Spring mattress, pillows and bedspread
- Bedside cabinets with storage
- Storage units
- Wardrobes with hanging rail and lighting
- Safe deposit box
- Telephone and data points
- Fitted carpet
- Side windows with blinds
- Drawers for storage
- Shelving
- Air conditioning
- iPod docking station

TV Lounge / Guest Cabin

- 40" TV and AV equipment
- Custom leather-finish seating area
- CD / Radio with integrated speakers
- iPod docking station
- High-level spotlights
- Low-level spotlights
- Door leading to en-suite and corridor
- Telephone and data points
- Access to private en-suite

All En-Suites

- Razor socket
- Extractor fan
- Overhead lighting
- Washbasins with clear silicon base
- Marble backsplash
- Taps
- Shower cubicle with door
- Hot & cold water faucets
- Integrated laundry basket

- Soap dispenser
- Towel rails
- Toilet roll holder
- Toothbrush holders
- Robe hooks
- Toilet brush and holder
- Large mirror
- Speakers with remote
- Air conditioning

Galley, Crew Area & Laundry

- 40" TV with entertainment system (crew mess)
- 26" TV with entertainment system (Capt cabin)
- 4 x 19" Flatscreen TV with entertainment systems (crew cabins)
- Clothes washer
- Tumble dryer
- Hot plates
- Full integrated grill & oven
- Microwave oven
- Extraction fan
- Full height refrigerator
- Full height freezer
- Dishwasher
- Stand-alone coffee machine
- Induction cooker
- Overhead lighting
- CD / Radio with speakers
- iPod docking station
- AC sockets
- Large sink
- Non-slip safety flooring
- Storage cabinets and overhead lockers
- Complete chinaware / glassware / cutlery for 8 crew
- Fixed dinette table with sofa
- Portholes with blinds
- Rubbish bins
- Assorted electrical cooking / food preparation equipment

Garage & Deck

- Williams 385 Tender (optional)

- Tender launch and retrieval system
- Side boarding ladder
- Retractable passarelle
- Retractable bathing ladder from transom swimming platform
- 2 Liferafts
- 4 Lifebuoys
- Emergency fire pump
- 2 EPIRM
- 2 SART
- Watermist protection for interior
- FM-200 protection for engine room
- Sprinkler protection for tender garage
- Medicine chest category "C"
- Medical kit SOLAS B with oxygen and defibrillator
- DESIM fire / anchor wash pump

Исключения

При продаже яхты исключаются личные вещи владельца.

Отказ от ответственности

Компания предоставляет описание судна или яхты добросовестно, но не может гарантировать точность этой информации, а также не ручается за техническое состояние. Покупатель должен проинструктировать своих агентов или оценщиков исследовать представленную информацию более подробно, по собственному желанию. Продажа судна или яхты, изменение цены или снятие с продажи будет происходить без предварительного уведомления.

ФОТОГРАФИИ

Port High Aft View Close Up



Port High Aft View



STB Low Aft View Moving



STB Low Aft View Moving Close Up



High Aerial Aft Space



High Aerial Bow Space



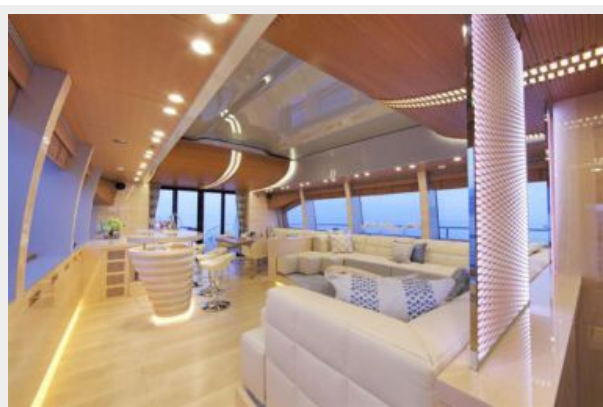
Bridge Lights



Saloon Dining 1



Saloon Looking Aft



TV Saloon



Galley 1



Galley 2



Galley 3



Master with TV



Master 1



Master 2



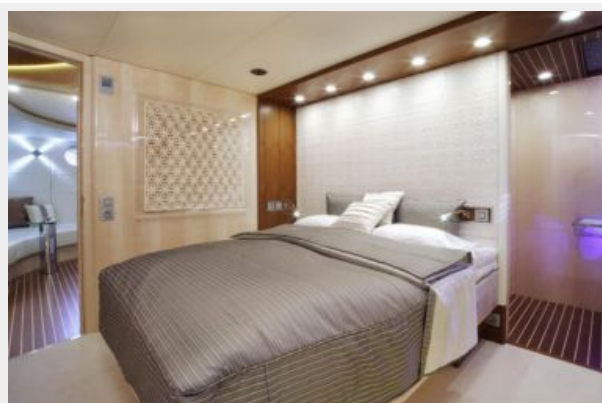
Master Bathroom



Bathroom Detail



VIP



Starboard Twin King Size



Port Twin



Captain Cabin



Crew Cabin 1



Tender in Garage



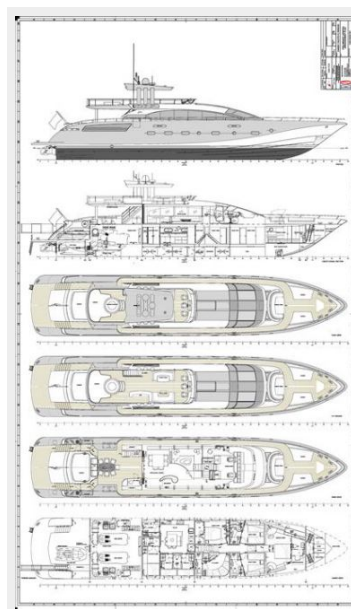
Engine Room 1



Engine Room 2



AeroCruiser 38 II Flybridge GA Plans



Engine Room 3



КОНТАКТЫ

Андрей Шестаков (Andrey Shestakov) – ведущий яхтенный брокер отдела продаж яхт и судов компании Shestakov Yacht Sales Inc. Официальный представитель Shestakov Yacht Sales Inc. для русскоговорящих клиентов в центральном офисе компании в Майами/Форт Лодердейл/Флорида/США.

Контактная информация

Email: andrey@shestakovyachtsales.com

Web: shestakovyachtsales.com

Телефоны

Краснодарский край: **+7(918)465-66-44**

США, Майами, Флорида: **+1(954)274-4435**

Время работы

Понедельник – Суббота: **9:00 - 21:00**
EDT

Воскресенье: **Закрито**

Адрес



Harbour Towne Marina, 850 NE 3rd St,
STE 213, Dania, FL 33004