

YAS — AZIMUT



Builder: [AZIMUT](#)

Year Built: 2010

Model: Motor Yacht

Price: PRICE ON APPLICATION

Location: United Arab Emirates

LOA: 100' 10" (30.73m)

Beam: 23' 4" (7.11m)

Min Draft: 3' 10" (1.17m)

Cruise Speed: 24 Kts. (28 MPH)

Max Speed: 28 Kts. (32 MPH)

Our experienced yacht broker, Andrey Shestakov, will help you choose and buy a yacht that best suits your needs **Yas — AZIMUT** from our catalogue. Presently, at Shestakov Yacht Sales Inc., we have a wide variety of yachts available on our sale's list. We also work in close contact with all the big yacht manufacturers from all over the world.

If you would like to buy a yacht **Yas — AZIMUT** or would like help answering any questions concerning purchasing, selling or chartering a yacht, please call **+1(954)274-4435**

TABLE OF CONTENTS

TABLE OF CONTENTS	2
SPECIFICATIONS	5
Overview	5
Basic Information	6
Dimensions	6
Speed, Capacities and Weight	7
Accommodations	7
Hull and Deck Information	7
Engine Information	7
PHOTOS	8
Flybridge	8
Flybridge	8
Flybridge Seating	8
Flybridge Seating	8
Jacuzzi	8
Jacuzzi	8
Upper Helm	9
Grill	9
Wet Bar	9
Roof	9
Domes	9
Aft	9
Tender Garage	10
Jetski 1	10
Jetski 2	10
Jetski 3	10
Side Deck	10
Aft Seating	10

Bow	11
Bow Seating	11
Sun Pads	11
Cockpit	11
Dinette	11
Saloon	11
Saloon Seating	12
Saloon Seating	12
Saloon Seating	12
Saloon TV	12
Lower Helm	12
Galley	12
Fridge	13
Sink	13
Washing Machine	13
Master Cabin	13
Master TV	14
Master Seating	14
Master Sink	14
Master Seating	14
Master Head	15
VIP Cabin	15
VIP Sink	15
VIP TV	15
Shared Day Head	16
Guest Cabin 1	16
Guest Cabin 2	16
Crew Cabin	16
Layout	17

CONTACTS	18
Contact details	18
Telephones	18
Office hours	18
Address	18

SPECIFICATIONS

Overview

One owner from new

Only Azimut 100 in the Gulf region

Low hours

Full Gulf specification

Flybridge & Upper Helm Raymarine E120 GPS chart plotter Raymarine ST2 90 rudder indicator Raymarine ST2 90 autopilot Raymarine 240E VHF Raymarine radar 2 x Radio marine SAT/TV Humphree trim tabs Bow & stern thruster Euro EL intercom MTC controls 2 x Bose speakers Full hard top w/ UV windows Domino Jacuzzi Large aft sunbed Large dinette table w/ seating Wetbar w/ fridge & ice maker BBQ w/ storage 2 x life raft (8 person capacity each)

Cockpit & Swim Platform Hi-Lo table convertible to sunbed Aft dinette opens to cockpit Safety guard rails 2 x Bose speakers Firefighting system Teak flooring Passerelle Removable swim ladder 2 x jet ski garages 1 x tender storage 2 x Seadoo jet skis (150HP) 1 x Williams Turbo Jet 325 1 x electric winch for Turbo Jet Minimax fire extinguisher system Escape hatch from tender garage Fresh water wash down

Side Decks & Bow Area

2 x side doors to helm & crew entry Forward seating area w/ 2 tables Retractable bimini cover 2 x large storage boxes w/ speakers Large sunbathing area Teak flooring Escape hatch Firefighting system RCF intercom

Engineering Idromar 155L/hr watermaker 2 x Saim Marine stabilizer Kohler 40EFOZD generator CLIMMA Air Con Transformer Firefighting system Security camera

Saloon

8 person dining table opens to cockpit Opening saloon door to cockpit Ample seating 4 folding chairs Sharp Plasma TV Bose lifestyle 48 w/ surround sound KA-50 Supertrack SAT/TV Humax decoder Crusair Air con Full dining setting w/ coffee cuttlery Granite wet bar w/ sink Frigoboat fridge w/ icemaker Lockable doors for privacy from crew

Galley

Convection microwave oven 4-burner cook top 2 x Frigoboat fridge/freezer Bosch washing machine w/ dryer Sharp TV & Sony stereo

Lower Helm

2 x Raymarine E120 GPS chart plotter Raymarine ST2 90 rudder Raymarine ST2 90 autopilot Raymarine 240E VHF Raymarine radar TRAC stabilizer control CAME security video control Azimut digital control MTU control Central panel High/Low captain's chair

Master Cabin & Head

King size bed w/ storage Sharp Plasma TV Bose lifestyle surround system Frigoboat fridge Small settee on the side Safe Ample storage w/ hanging locker His & Hers vanity w/ granite tops Rain shower w/ luxurious side jets Tecma toilet & bidet

VIP Cabin & Head

Queen size bed Sharp Plasma TV Bose lifestyle surround system Vanity table & stool Ample storage Emergency exit Rain shower w/ teak flooring Tecma toilet

Guest Cabin 1

Twin berths 1 x Pullman bed Sharp Aquos TV Drawers underneath berths Opening porthole Hanging wardrobe w/ bar & lights Share day head including: •Top in marble •Wash basin •Drawer underneath the sink •Cabinets & mirrors •Rain shower w/ teak grating •Tecma toilet

Guest Cabin 2

Twin berths Sharp Aquos TV Opening porthole Separate unit for head including: •Rain shower (teak inlay) •Granite floor & benches •Tecma toilet

2 x Crew Cabin

2 x Pullman beds Hanging wardrobe w/ bar Opening porthole 2 x head including: Washbasin, cabinet & mirror Shower w/ teak flooring Tecma toilet

Basic Information

Category: Motor Yacht

Model Year: 2010

Year Built: 2010

Country: United Arab Emirates

Fly Bridge: Yes

Cockpit: Yes

Dimensions

LOA: 100' 10" (30.73m)

Beam: 23' 4" (7.11m)

Min Draft: 3' 10" (1.17m)

Speed, Capacities and Weight

Cruise Speed: 24 Kts. (28 MPH)

Max Speed: 28 Kts. (32 MPH)

Water Capacity: 475.5096936 Gallons

Fuel Capacity: 2900.60913096 Gallons

Accommodations

Total Cabins: 4

Total Berths: 10

Crew Cabin: 2

Crew Berths: 4

Crew Sleeps: 4

Crew Heads: 2

Hull and Deck Information

Hull Material: GRP

Hull Color: Blue

Engine Information

Engines: 2

Manufacturer: MTU

Model: 16V

Fuel Type: Diesel

PHOTOS

Flybridge



Flybridge



Flybridge Seating



Flybridge Seating



Jacuzzi



Jacuzzi



Upper Helm



Grill



Wet Bar



Roof



Domes



Aft



Tender Garage



Jetski 1



Jetski 2



Jetski 3



Side Deck



Aft Seating



Bow



Bow Seating



Sun Pads



Cockpit



Dinette



Saloon



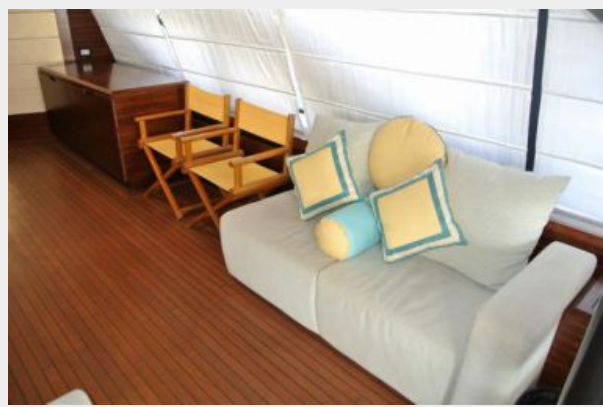
Saloon Seating



Saloon Seating



Saloon Seating



Saloon TV



Lower Helm



Galley



Sink



Fridge



Washing Machine



Master Cabin



Master TV



Master Seating



Master Seating



Master Sink



Master Head



VIP Cabin



VIP Sink



VIP TV



Shared Day Head



Guest Cabin 1



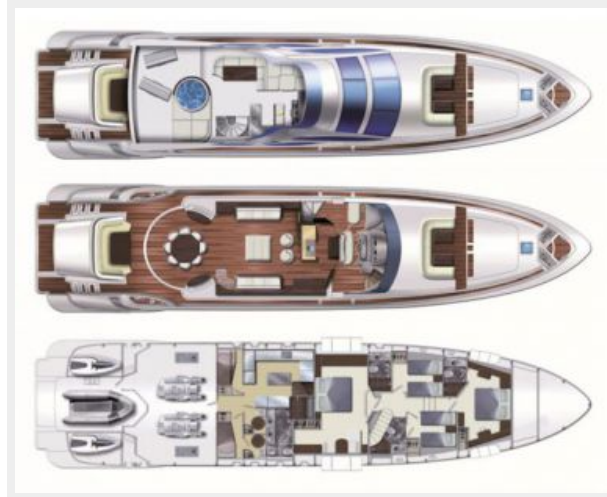
Guest Cabin 2



Crew Cabin



Layout



CONTACTS

Andrey Shestakov, leading yacht broker of the sales department of Shestakov Yacht Sales Inc. Shestakov Yacht Sales Inc., the official representative of the Miami/Fort Lauderdale FL headquarters.

Contact details

Email: andrey@shestakovyachtsales.com

Web: shestakovyachtsales.com/en/

Telephones

USA: +1(954)274-4435

Office hours

Monday – Saturday: **9:00 - 21:00** EDT

Sunday: **closed**

Address



Harbour Towne Marina, 850 NE 3rd St,
STE 213, Dania, FL 33004