

SEA CLOUD — SILVERTON



Builder: SILVERTON

Year Built: 2003

Model: Sport Fisherman

Price: PRICE ON APPLICATION

Location: United States

LOA: 38' 0" (11.58m)

Beam: 14' 3" (4.34m)

Min Draft: 3' 7" (1.09m)

Our experienced yacht broker, Andrey Shestakov, will help you choose and buy a yacht that best suits your needs **Sea Cloud — SILVERTON** from our catalogue. Presently, at Shestakov Yacht Sales Inc., we have a wide variety of yachts available on our sale's list. We also work in close contact with all the big yacht manufacturers from all over the world.

If you would like to buy a yacht **Sea Cloud — SILVERTON** or would like help answering any questions concerning purchasing, selling or chartering a yacht, please call **+1(954)274-4435**

TABLE OF CONTENTS

TABLE OF CONTENTS	2
SPECIFICATIONS	4
Overview	4
Basic Information	4
Dimensions	4
Speed, Capacities and Weight	4
Accommodations	5
Hull and Deck Information	5
Engine Information	5
DETAILED INFORMATION	6
Vessel Walkthrough	6
Salon	6
Galley	6
Master Stateroom	6
Master Head	6
Port Side Stateroom	7
Helm	7
Flybridge	7
Electronics	7
Electrical System	8
Engine Room	8
Cockpit	8
Decks	8
Exclusions	8
Disclaimer	8
PHOTOS	10
CONTACTS	15
Contact details	15

Telephones	15
Office hours	15
Address	15

SPECIFICATIONS

Overview

This 38 Silverton has it all.....two staterooms with ample berths, beautiful woodwork, hardtop on flybridge, dependable Caterpillar diesel engines, large salon, cockpit for fishing or entertaining, updated electronics.....you can check off all of the boxes on Sea Cloud. She's been impeccably maintained in FRESHWATER, and is ready for you summer cruise TODAY! Check out the price...Sea Cloud will not last long! Owner has had a change of plans, and this will be the next boat sold!

Basic Information

Category: Sport Fisherman

Sub Category: Convertible

Model Year: 2003

Year Built: 2003

Country: United States

Vessel Top: 2363

Fly Bridge: Yes

Dimensions

LOA: 38' 0" (11.58m)

Beam: 14' 3" (4.34m)

Min Draft: 3' 7" (1.09m)

Clearance: 16' 8" (5.08m)

MFG Length: 41' 1" (12.52m)

Speed, Capacities and Weight

Displacement: 28000 Pounds

Water Capacity: 100 Gallons

Holding Tank: 40 Gallons

Fuel Capacity: 360 Gallons

Accommodations

Total Cabins: 2

Total Berths: 2

Sleeps: 6

Total Heads: 1

Hull and Deck Information

Hull Material: Fiberglass

Engine Information

Engines: 2

Manufacturer: Caterpillar

Model: 3126B

Engine Type: Inboard

Fuel Type: Diesel

DETAILED INFORMATION

Vessel Walkthrough

Powerboat Guide says, “ Versatile flybridge convertible delivers big boat comfort and performance....”. Twin Stateroom Interior, beautiful cabinetry, split head, large full featured galley, convertible sofa AND L lounge in salon, and tasteful décor.

Salon

- Cherry Satin interior
- Flatscreen TV
- Bose 321 Entertainment System
- Electric convertible sofa
- Large L-shape Lounge
- Table - HiLo
- AC/Heat
- Opening windows w/ screens
- Rod storage overhead

Galley

- Down to Starboard
- 3-Burner electric stove
- Sharp microwave/convection oven
- Built-in coffee maker
- Corian countertops
- Nova Cool double door refrigerator
- Generous cabinets/storage
- Teak sole

Master Stateroom

- Large queen size berth
- Cedar lined hanging locker
- Stall shower off stateroom
- Ensuite head

Master Head

- Vacuflush head
- Corian countertops/sink
- Vanity
- Access to Master Stateroom

Port Side Stateroom

- Convertible Twin/Queen bed
- Drawer storage
- Cedar lined hanging locker
- Access to stall shower

Helm

- Full instrumentation
- Trim tabs
- Windlass control
- 12V outlet
- Spreader lights
- Hardtop lights
- Clock
- ACR RCL 100 Spotlight

Flybridge

- 2 Helm seats
- Hardtop
- Full Enclosure
- Bench seat - Forward
- Carpeting
- Stairs to Cockpit
- Large Helm station
- Rocket launchers (6)

Electronics

- Simrad AP22 Autopilot
- Simrad IS12 depth
- Simrad NSS12 Chartplotter (2012)
- Simrad RA42C Radar

- Sea 157 VHF radio
- Sony stereo/CD

Electrical System

- 50 Amp Shorepower
- 8Kw Kohler generator w/ sound shield - 30.7 hrs

Engine Room

- Racor fuel filters
- Groco Scan Water strainers

Cockpit

- Wetbar
- Norcold Refrigerator
- Tackle storage
- 2 - Fishboxes
- Freshwater washdown
- Raw water washdown
- Transom gate
- Swim platform w/ ladder
- Transom shower

Decks

- Windshield cover
- Simpson Lawrence windlass
- Delta anchor w/ line & chain
- Rod holders

Exclusions

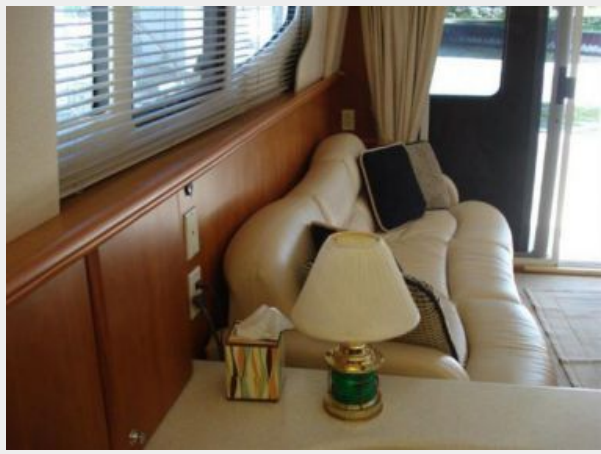
Owner's personal belongings.

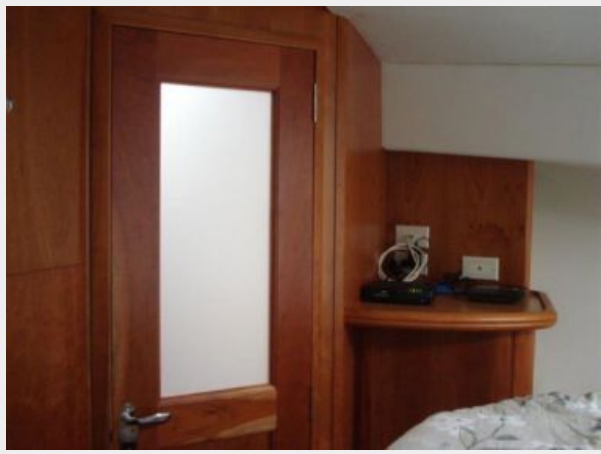
Disclaimer

The Company offers the details of this vessel or yacht in good faith but cannot guarantee or

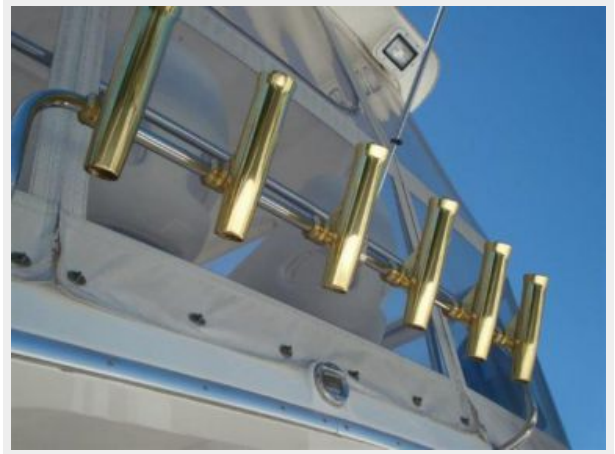
warrant the accuracy of this information nor warrant the condition of the vessel. A buyer should instruct his representatives, agents, or his surveyors, to investigate such details as the buyer desires validated. This vessel or yacht is offered subject to prior sale, price change, or withdrawal without notice.

PHOTOS











CONTACTS

Andrey Shestakov, leading yacht broker of the sales department of Shestakov Yacht Sales Inc. Shestakov Yacht Sales Inc., the official representative of the Miami/Fort Lauderdale FL headquarters.

Contact details

Email: andrey@shestakovyachtsales.com

Web: shestakovyachtsales.com/en/

Telephones

USA: +1(954)274-4435

Office hours

Monday – Saturday: **9:00 - 21:00** EDT

Sunday: **closed**

Address



Harbour Towne Marina, 850 NE 3rd St,
STE 213, Dania, FL 33004