

MAR LINDA — TOLLYCRAFT



Судостроитель: TOLLYCRAFT

Год постройки: 1989

Модель: Моторная яхта

Цена: ЦЕНА ЯХТЫ ПО ЗАПРОСУ

Местонахождение: United States

Длина общая: 61' 0" (18.59m)

Ширина: 17' 8" (5.38m)

Макс. осадка: 4' 6" (1.37m)

Купить **Mar Linda — TOLLYCRAFT** а также выбрать подходящую вам яхту из нашего каталога яхт вам поможет опытный яхтенный брокер Андрей Шестаков. На сегодняшний день компания **Shestakov Yacht Sales Inc.** имеет большое количество яхт в собственном списке продаж, а также тесно сотрудничает со всеми крупными яхтенными производителями по всему миру.

Для того чтобы купить яхту **Mar Linda — TOLLYCRAFT** а также проконсультироваться по любому вопросу связанному с покупкой, продажей, чартером яхт позвоните по телефону **+7(918)465-66-44**.

ОГЛАВЛЕНИЕ

ОГЛАВЛЕНИЕ	2
ХАРАКТЕРИСТИКИ	3
Обзор	3
Основная информация	3
Размеры	3
Скорость, вместимость и масса	4
Размещение	4
Корпус и палуба	4
Информация о двигателе	4
ПОДРОБНОЕ ОПИСАНИЕ	5
Accommodations	5
Galley	5
Electrical	6
Electronics	6
Mechanical	7
Fly Bridge	8
Deck Equipment	8
Misc	8
Исключения	9
Отказ от ответственности	9
ФОТОГРАФИИ	10
КОНТАКТЫ	14
Контактная информация	14
Телефоны	14
Время работы	14
Адрес	14

ХАРАКТЕРИСТИКИ

Обзор

Mar-Linda is one of the nicest 61' Tollycrafts we have ever been associated with. Look no further! This should be your check list:

Original Owner - - check

Moored undercover since new - - check

Full time caretaker - - check

Maintained with an open checkbook - - check

LP painted exterior (unbelievable shine) - - check

Never chartered - - check

Detuned Detroit engines for extended longevity - - check

Immaculate Condition - - check

Tollycraft quality and sea handling characteristics - - check

Основная информация

Тип судна: Моторная яхта

Модельный год: 1989

Год постройки: 1989

Страна: United States

Размеры

Длина общая: 61' 0" (18.59m)

Ширина: 17' 8" (5.38m)

Макс. осадка: 4' 6" (1.37m)

Скорость, вместимость и масса

Водоизмещение: 65000 Pounds

Вместимость воды: 400 Gallons

Вместимость сточного бака: 100 Gallons **Объем топливного бака:** 1100 Gallons

Размещение

Всего кают: 3

Корпус и палуба

Материал корпуса: Fiberglass

Информация о двигателе

Двигатели: 2

Производитель: Detroit Diesel

Модель: 8V92TA

Тип топлива: Diesel

ПОДРОБНОЕ ОПИСАНИЕ

Accommodations

Mar Linda is a 3 Cabin 2 Head luxury cruiser with plenty of room to spread out. Her large Salon and remodeled Chef's Galley make for wonderful living and entertainment accommodations.

The salon is entered through a single door to the open, spacious layout finished in beautiful Bermese teak with a satin varnish. The entertainment center is aft to starboard, Huge L- lounge and hi-low fwd of the desk area and forward to starboard. The galley is forward to starboard and across from it is one of the biggest pantry's on any yacht with double door floor to ceiling lockers along with a wet bar.

Forward is the companionway to the pilothouse. The pilothouse has a large raised settee and table, two side doors, standard and custom chart drawers, hatch to flybridge and companionway to the staterooms. The Pilothouse is command central with instruments and controls set up for ease of reading and contact from the single helm chair and awesome 180 degree visibility. The steps down to port curve to a companionway and the 3 staterooms with the washer/dryer in the companionway at the base of the stairs.

At the Bow of the boat is a VIP stateroom with an island queen berth. The 2nd guest stateroom is aft of the VIP to starboard and features twin athwart-ship single beds with a large hanging locker. The guest head is in the companionway between the VIP & 2nd stateroom and features a stand up shower, head, and vanity. The master stateroom is aft and low in the boat and is full beam featuring opening hull portlights, en-suite head, big island berth, vanity desk, plenty of hanging lockers and drawers.

- Espar Forced Air diesel heaters (2) - currently decommissioned
- 110v Electric Heat in all cabins, heads, salon & galley
- Teak Trim in lower staterooms
- 240v Westinghouse Washer/ Dryer in hall - large size
- Venetian blinds and curtains
- AM/FM stereo, amplifier, CD and tape player
- Remote speaker, volume controls
- Entertainment center with TV, DirecTV SAT receiver
- In-house intercom system
- Wet bar with brass sink and glass rack and holders
- Central Vac system
- Salon Table with extension (stored behind sofa)
- 2 Chairs & Large L-shaped sofa
- Desk with Chair

Galley

Mar Linda recently received a Galley renovation with new Sub Zero Fridge/ Freezer, new Corian counters, new parque teak sole, and more! Plenty of room for the cook and more in the galley with a double door pantry across from the galley

- New Sub Zero side by side Frige/ Freezer
- New Corian Counters
- Deep S/S undermount sinks (2)
- Jennair 110v Stove/ Oven w/ 4 burners & griddle
- Broan Trash Compactor
- Frigedaire Dishwasher
- Sharpe Microwave
- Lots of cabinets and drawers
- InSinkErator garbage disposal
- Two full size pantry cupboards
- Teak parquet floor
- Recessed flourecent lighting
- Tank tender guage for water

Electrical

- 220/110V, 24V and 12V systems
- New 12v Batteries (12) - 2013
- New 24v Batteries (4) - 2011
- 20 kW Northern Lights genset
- 8 kW Northern Lights genset
- 3000 watt Magnum 12v - 110v Inverter
- Xantrex True Charge 40 Amp 12V charger
- Trace 1500 watt Inverter/Battery Charger
- 50 Amp shore cord
- 30 and 50 Amp shore side power cord inlets
- Full electrical panel with easy access in stairwell to lower staterooms

Electronics

- Furuno 72NM radar, open aray, screen at helm
- Furuno 48NM radar, open array, 2nd screen at helm
- Furuno CH-14 color sonar
- W-H autopilot w/ electronic compass
- W-H autopilot remote at helm
- Dell 18-inch flat screen with A/B switch from Northstar units
- B&G HS291 System - Wind, Speed, Depth
- B&G HS291 repeater in Master SR

- Northstar 6000i Chart Plotter
- Northstar 6100i Chart Plotter
- Furuno Video depth sounder
- Cellphone Booster antenna
- ICOM IC-M500 VHF Radio w/ RAM
- Standard Horizon loud hailer
- Ritchie Electronic compass
- Digital Anchor meter
- Electro-Helm Trim tabs w controls at helm
- Electro-Helm Sync controls at helm
- B&G HS291 repeater at Flybrige
- VHF at Flybridge
- Autopilot Remote at flybridge
- 2nd Ritchie compass at flybridge
- Satellite System on flybridge arch (cell & TV)
- 2nd Satellite dome on fwd deck of flybridge (Mitsubishi Satphone)
- Ships clock and barometer
- Remote anchor controls
- Organized 3 ring binders of Tollycraft and all on board systems
- Tank Tender gauge for fuel/water
- Complete set of gauges for main engines including Pyrometers

Mechanical

- Twin 8V92TA Detroit Diesels 650 HP- detuned with smaller injectors
- Twin Disc transmissions
- Hydraulic Bow Thruster (PTO on portside engine)
- Dual Racor 500FGSS fuel filters with vacuum gauge
- Single Racor Fuel Filters for generators (2 Northern Lights)
- Groco raw water strainers
- Block heaters on main engines
- Oil pump out system
- Two spare props and one spare shaft
- Hydraulic steering
- Fireboy Halon fire suppression
- Electro-Helm Trolling valves
- 30 gallon hot water tank
- 100 gallon holding tank
- Vacuflush heads (2)
- Port and starboard fuel fillers
- 4 x 3000 GPH bilge pumps
- 1 x 2000 GPH bilge pump
- New LED engine room lighting

- New engine room blowers

Fly Bridge

The flybridge is huge, friendly, and great for entertaining or just lounging around. A large bimini covers the helm station and built in seating, and there is a nice round table with 4 chairs aft and lots of storage. Aft are chocks and a davit set up for a Novurania Hard-bottom inflatable w/ Yamaha 60 HP. Covered side decks and foredeck are easy to walk around with safe and high bulwarks and teak hand rails varnished to perfection.

- Nick Jackson power davit crane with new motor
- Novurania 13' Hardbottom Inflatable with center console
- 60HP Honda OB Engine on power tilt for Inflatable
- Full canvas covers for Inflatable, seating, helm station, cabinets, and freezer
- Spotlights on arch
- Decktop 12v SeaFreeze Freezer
- Propane BBQ with Rotisarie
- Wet bar with Sink
- Ice maker (not operational)
- Blue Sunbrella wind screen pilothouse windows
- Varnished Teak caprails around upper deck

Deck Equipment

- Bruce 50KG Anchor, 400 ft chain
- Hydraulic Windlass
- Salt and fresh water wash downs at both bow and stern
- High Pressure washdown at bow
- Fiberglass Spray skirts for bow area
- Custom fender racks
- Cockpit cabinet with sink and drawers

Misc

- Air compressor
- New Hydraulic pumps & lines
- Prop Puller under forward berth
- (2) Penn Electric Downriggers with custom stainless mounts
- Dockside pressure water inlet
- Lifesling

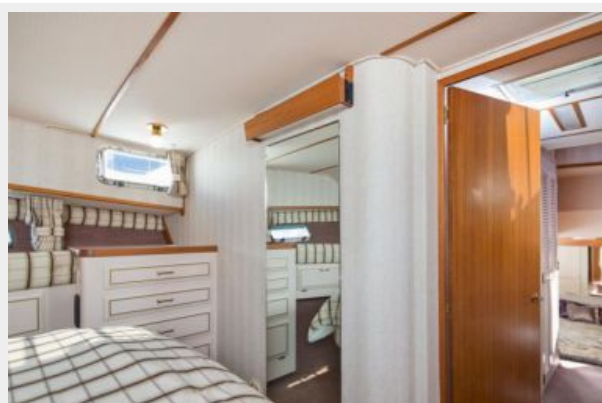
Исключения

При продаже яхты исключаются личные вещи владельца.

Отказ от ответственности

Компания предоставляет описание судна или яхты добросовестно, но не может гарантировать точность этой информации, а также не ручается за техническое состояние. Покупатель должен проинструктировать своих агентов или оценщиков исследовать представленную информацию более подробно, по собственному желанию. Продажа судна или яхты, изменение цены или снятие с продажи будет происходить без предварительного уведомления.

ФОТОГРАФИИ









КОНТАКТЫ

Андрей Шестаков (Andrey Shestakov) – ведущий яхтенный брокер отдела продаж яхт и судов компании Shestakov Yacht Sales Inc. Официальный представитель Shestakov Yacht Sales Inc. для русскоговорящих клиентов в центральном офисе компании в Майами/Форт Лодердейл/Флорида/США.

Контактная информация

Email: andrey@shestakovyachtsales.com

Web: shestakovyachtsales.com

Телефоны

Краснодарский край: **+7(918)465-66-44**

США, Майами, Флорида: **+1(954)274-4435**

Время работы

Понедельник – Суббота: **9:00 - 21:00**
EDT

Воскресенье: **Закрето**

Адрес



Harbour Towne Marina, 850 NE 3rd St,
STE 213, Dania, FL 33004