

## ZEUS DRIVE — SEA RAY



**Судостроитель:** [SEA RAY](#)

**Год постройки:** 2010

**Модель:** Моторная яхта

**Цена:** ЦЕНА ЯХТЫ ПО ЗАПРОСУ

**Местонахождение:** United States

**Длина общая:** 50' 0" (15.24m)

**Ширина:** 14' 8" (4.47m)

**Макс. осадка:** 3' 10" (1.17m)

Купить Zeus Drive — SEA RAY а также выбрать подходящую вам яхту из нашего каталога яхт вам поможет опытный яхтенный брокер Андрей Шестаков. На сегодняшний день компания Shestakov Yacht Sales Inc. имеет большое количество яхт в собственном списке продаж, а также тесно сотрудничает со всеми крупными яхтенными производителями по всему миру.

Для того чтобы купить яхту Zeus Drive — SEA RAY а также проконсультироваться по любому вопросу связанному с покупкой, продажей, чартером яхт позвоните по телефону **+7(918)465-66-44**.

# ОГЛАВЛЕНИЕ

ОГЛАВЛЕНИЕ	2
ХАРАКТЕРИСТИКИ	5
Основная информация	5
Размеры	5
Скорость, вместимость и масса	5
Размещение	5
Корпус и палуба	5
Информация о двигателе	5
ПОДРОБНОЕ ОПИСАНИЕ	6
Description	6
Key Features	6
Electrical systems	6
CONTROL STATION	6
Salon	7
CABIN FEATURES	7
AIR CONDITIONING / HEATING	7
COCKPIT FEATURES	7
Galley	7
MID-STATEROOM	7
MID-STATEROOM HEAD/SHOWER	7
Electronics	8
Engine Room	8
FORWARD HEAD - PORT	8
FORWARD SHOWER - STARBOARD	8
FORWARD STATEROOM	8
Fuel System	8
HULL & DECK FEATURES	8
GENERATOR	9

Propulsion	9
UNDERWATER GEAR	9
WASTE SYSTEMS	9
WATER SYSTEM	9
WINDLASS SYSTEM	9
Исключения	9
Отказ от ответственности	9
<b>ФОТОГРАФИИ</b>	<b>11</b>
Starboard Profile	11
Helm	11
Cockpit	11
Cockpit	11
Cockpit	11
Port Seating	11
Helm	12
Facing Forward	12
Facing Forward	12
Starboard Aft Seating	12
Facing Aft	12
Main Salon / Galley	12
Starboard Salon	13
Starboard Salon	13
Galley	13
Galley	13
Facing Aft	13
Forward Master Stateroom	13
Forward Master Stateroom	14
Forward Master Stateroom	14
Port Master Head	14

---

Aft Stateroom	14
Aft Stateroom	14
Aft Stateroom	14
Aft Stateroom sink	15
Aft Stateroom / Washer-dryer	15
Radar	15
Bow Sunpad	15
Bow Sunpad	15
Canvas / Seating Cover	15
Zeus Drives	16
Zeus Drives	16
Layout	16
Port Profile	16
Layout	16
Cruising	16
<b>КОНТАКТЫ</b>	<b>17</b>
Контактная информация	17
Телефоны	17
Время работы	17
Адрес	17

# ХАРАКТЕРИСТИКИ

## Основная информация

Тип судна: Моторная яхта

Модельный год: 2010

Год постройки: 2010

Страна: United States

## Размеры

Длина общая: 50' 0" (15.24m)

Ширина: 14' 8" (4.47m)

Макс. осадка: 3' 10" (1.17m)

## Скорость, вместимость и масса

Водоизмещение: 34250 Pounds

Вместимость воды: 110 Gallons

Вместимость сточного бака: 60 Gallons

Объем топливного бака: 400 Gallons

## Размещение

Всего кают: 2

Всего коек: 6

Всего ком. состава: 2

## Корпус и палуба

Материал корпуса: Fiberglass

## Информация о двигателе

Двигатели: 2

Производитель: Cummins

Модель: Zeus QSC 550

Тип двигателя: Inboard

# ПОДРОБНОЕ ОПИСАНИЕ

---

## Description

---

The gorgeous curves and aerodynamic profile of the 500 Sundancer are sure to attract attention. Outfitted with a unique, electric windshield vent system that allows for an unbroken line from deck to roof plus a sleek hardtop with two extra-large sunroof hatches, this ingeniously designed beauty is nothing short of inspired.

## Key Features

---

Standard SmartCraft® Instrumentation and VesselView. Optional Zeus pod drives with 360° Control helm joystick. U-shaped seating with storage below. Standard VHF radio. Sirius® satellite receiver with antenna (N/A outside N. America) Large transom storage with gas-assist lid. Sea Ray Owners Club™ membership (available in USA & Canada). Standard 26" LCD flatscreen TV with remote DVD player in salon. Chrome finish knobs and switch plates. Standard Ultraleather HP™ interior seating. Innerspring mattress standard in master stateroom. Convertible salon sofa-sleeper. Optional washer/dryer combo. Swim platform with concealed ladder. Standard hardtop with overhead lighting and two large opening sunroof hatches. Optional recessed forward deck sun pad. Fiberglass stringer system. Standard 240v/50 Amp shore power with convenient Glendinning cablemaster. Shore power and water inlets concealed in transom storage. Aluminum windshield frame and electric front vent. Patented underwater exhaust for quieter cruising. Dripless shaft logs with extra seal carrier kit. High water bilge pump and alert system at helm. Optional bow thruster. Meets applicable USCG, NMMA, and ABYC standards

## Electrical systems

---

Batteries, 8-D Battery Charger Overcurrent Protection Battery Charger/Converter, 120V/50 Amp/12V Battery Switches Cable Television System Cable TV System Panel DC Circuit Breaker - Remote Panel, DC Main Breaker Panel, Main Distribution - AC Panel, Main Distribution - DC Shore Power, Cablemaster Transformer, Shore Power Isolation Wiring, Color-Coded

## CONTROL STATION

---

Alarms, High-Water: Bilge & Cabin Compass Emergency Start System Gel-Coated Dash: Nickel Horn, Air Instrument Panel: High-Gloss Power Steering, Hydraulic Shift & Throttle Controls SmartCraft Diagnostics SmartCraft® VesselView Display Switch Panel: High Gloss (Backlit) Switches, Illuminated

---

## Salon

---

Entertainment Center Mirror, Wall Accent Seating, L-Shaped Sofa: w/Pull-Out Bed (Ultraleather HP) Storage, Gunwale Cabinets Table, Dinette (Movable): Hi-Lo w/High Gloss Wood Surface

---

## CABIN FEATURES

---

Blinds Carbon Monoxide Monitors Carpet Carpet Runners, Interior Handrails Lighting, 12V Indirect Lighting, 12V Xenon Outlet, Phone Outlets, 120V GFI Protected Outlets, 12V Accessory Pillows, Accent Steps, Entryway Storage, In-Floor

---

## AIR CONDITIONING / HEATING

---

Custom Integral Vent System Zone-Controlled Reverse-Cycle System

---

## COCKPIT FEATURES

---

Beverage Holders (10) Carpet Liner, Snap-In Door, Sliding Cabin Entry Door, Transom Floor Liner, Fiberglass Handrails, 316 Stainless Steel Hardtop, Fiberglass Hatch, Engine Service Icemaker, 120V Lighting, Indirect Outlet, 120V GFI Protected Outlet, 12V Accessory Seating, L-Shaped Bench Seating, Pivoting Double Helm Seating, U-Shaped Ship's Bell Steps, Boarding Stereo, Sony Storage, Side Panel Table, Cockpit Wet Bar

---

## Galley

---

Coffeemaker, 120V Countertop, Solid-Surface Handrail, Stainless Steel Microwave/Convection Oven Power Vent, 12V: w/Stainless Steel Grill Power Vent, 24V Refrigerator/Freezer, Upright Storage, Drawers Storage, Upper & Lower Stove, Two-Burner (Surface Mounted) Trash Receptacle

---

## MID-STATEROOM

---

Bed, Twin (2) Mattresses Door, Privacy Hanging Locker: w/Lights & Shelves Portlight: Stainless Steel - Opening Storage, Cabinets: Starboard

---

## MID-STATEROOM HEAD/SHOWER

---

Curtain, Shower Door, Privacy: Access from Mid-Stateroom Handrail, Stainless Steel Head, VacuFlush Robe Hook Shower Storage, Medicine Cabinet: Mirrored Towel Ring Vanity

---

## Electronics

---

Electronics Circuit, 12V/50 Amp VHF Radio, Raymarine 240

---

## Engine Room

---

Bilge Pumps, 12V Bilge Pumps, 12V (2) Blowers, 12V Bilge (2) Exhaust, Underwater Fire Suppression System Gel-Coated Engine Room Insulation, Engine Room - 2" Ladder, Stainless Steel Lighting, 12V Oil Changer System

---

## FORWARD HEAD - PORT

---

Bathroom Tissue Holder Door, Privacy Handrails Head, VacuFlush Power Vent, 12V Robe Hook Storage, Gunwale Cabinet Storage, Medicine Cabinet: Mirrored Vanity

---

## FORWARD SHOWER - STARBOARD

---

Curtain, Shower Door, Privacy Handrails: Stainless Steel Shower Towel Rings (2)

---

## FORWARD STATEROOM

---

Bed, Full-Size Island-Style Door, Privacy (Sliding Pocket) Flooring, Wood Hanging Lockers (2) Mirrored Rope Locker Bulkhead Storage, Side Shelves TV, 15" Flatscreen

---

## Fuel System

---

Crossover Fuel System Fuel Filters Fuel Lines (USCG - Type A-1) Fuel Tanks, Aluminum

---

## HULL & DECK FEATURES

---

Bottom Paint Bow Rail Canvas Colors: (Blue, Black, Pewter) Cleats, Custom Sea Ray (8) Deck Fill Plates Deck Rails Gel Coat, Arctic White Graphics, Striping Handrails, 316 Stainless Steel Hatch, Deck Vent Hull Windows: Stainless Steel (6 Fixed) Lights, Navigation Portlights: Stainless Steel (3 Opening, 3 Fixed) Resin, High-Performance Vinylester Rub Rail, PVC Skylight, Flush Mount Storage, Transom Wall Stringer System, Fiberglass Swim Platform, Integral/Extended Thru-Hull Fittings Toe Rail: Molded Fiberglass - Deck Vent System, Engine Room Windshield Washer System Windshield Wipers: w/Delay & Speed Control Windshield, Tempered/Tinted Curved Glass



---

## GENERATOR

---

9.0 kW Onan - Diesel, 120/240V/60 Cycle

---

## Propulsion

---

T-Cummins MerCruiser QSC 550 DTS Twin Diesel Zeus Drive (T-526 hp - 746 kW)

---

## UNDERWATER GEAR

---

Bonding System Propeller Shafts, 2 1/2" Propellers, Nibral 4-Blade Cup Rudders, Manganese-Bronze Seacocks Seawater Strainers Shaft Logs, Dripless Struts, Manganese-Bronze Trim Tabs, Hydraulic

---

## WASTE SYSTEMS

---

Head System, VacuFlush Holding Tank Holding Tank Level Indicators Sump Box

---

## WATER SYSTEM

---

Freshwater Washdown Spigots Manifold System Pressure Water System Shower, Cockpit Water Heater (11-Gallon) Water Inlet, Dockside

---

## WINDLASS SYSTEM

---

Anchor Chute: Stainless Steel Anchor Rope/Chain Storage (2): w/Hatches Anchor Washdown Spigot Anchor, Galvanized Windlass, Rope/Chain: w/Foot Switches

---

## Исключения

---

При продаже яхты исключаются личные вещи владельца.

---

## Отказ от ответственности

---

Компания предоставляет описание судна или яхты добросовестно, но не может гарантировать точность этой информации, а также не ручается за техническое состояние. Покупатель должен проинструктировать своих агентов или оценщиков исследовать представленную информацию более подробно, по собственному желанию. Продажа судна или яхты, изменение цены или снятие с продажи будет происходить без предварительного уведомления.



# ФОТОГРАФИИ

**Starboard Profile**



**Helm**



**Сockpit**



**Сockpit**



**Сockpit**



**Port Seating**



**Helm**



**Facing Forward**



**Facing Forward**



**Starboard Aft Seating**



**Facing Aft**



**Main Salon / Galley**





**Starboard Salon**



**Starboard Salon**



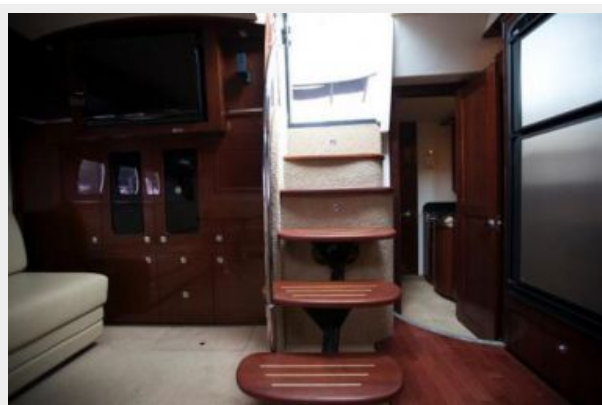
**Galley**



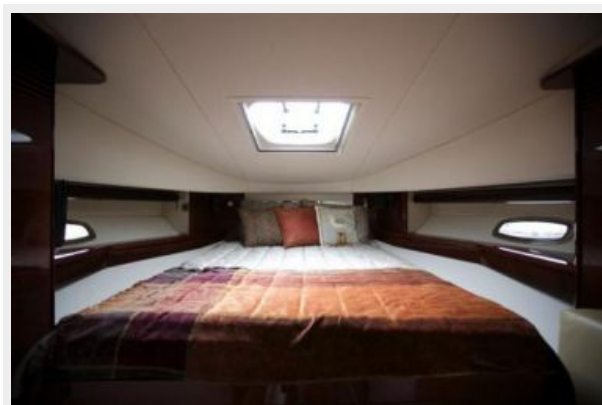
**Galley**



**Facing Aft**



**Forward Master Stateroom**



**Forward Master Stateroom**



**Forward Master Stateroom**



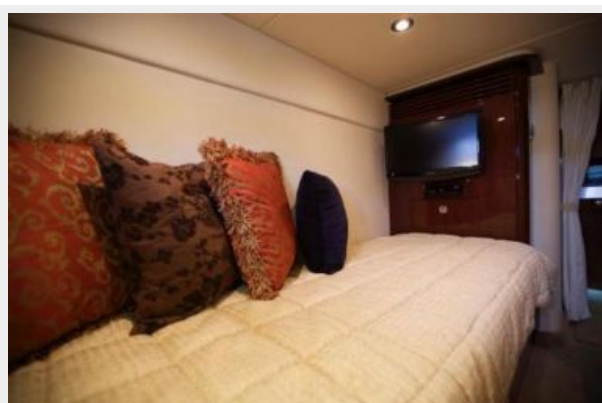
**Port Master Head**



**Aft Stateroom**



**Aft Stateroom**



**Aft Stateroom**



**Aft Stateroom sink**



**Aft Stateroom / Washer-dryer**



**Radar**



**Bow Sunpad**



**Bow Sunpad**



**Canvas / Seating Cover**





**Zeus Drives**



**Zeus Drives**



**Port Profile**



**Layout**



**Layout**



**Cruising**





# КОНТАКТЫ

---

Андрей Шестаков (Andrey Shestakov) – ведущий яхтенный брокер отдела продаж яхт и судов компании Shestakov Yacht Sales Inc. Официальный представитель Shestakov Yacht Sales Inc. для русскоговорящих клиентов в центральном офисе компании в Майами/Форт Лодердейл/Флорида/США.

## Контактная информация

---

Email: [andrey@shestakovyachtsales.com](mailto:andrey@shestakovyachtsales.com)

Web: [shestakovyachtsales.com](http://shestakovyachtsales.com)

## Телефоны

---

Краснодарский край: **+7(918)465-66-44**

США, Майами, Флорида: **+1(954)274-4435**

## Время работы

---

Понедельник – Суббота: **9:00 - 21:00**  
EDT

Воскресенье: **Закрито**

## Адрес

---



Harbour Towne Marina, 850 NE 3rd St,  
STE 213, Dania, FL 33004