

WEST WINDS — WEST WINDS



Builder: [West Winds](#)

Year Built: 1967

Model: Trawler

Price: PRICE ON APPLICATION

Location: United States

LOA: 48' 0" (14.63m)

Beam: 14' 0" (4.27m)

Cruise Speed: 7 Kts. (8 MPH)

Max Speed: 9 Kts. (10 MPH)

Our experienced yacht broker, Andrey Shestakov, will help you choose and buy a yacht that best suits your needs **WEST WINDS — West Winds** from our catalogue. Presently, at Shestakov Yacht Sales Inc., we have a wide variety of yachts available on our sale's list. We also work in close contact with all the big yacht manufacturers from all over the world.

If you would like to buy a yacht **WEST WINDS — West Winds** or would like help answering any questions concerning purchasing, selling or chartering a yacht, please call **+1(954)274-4435**

TABLE OF CONTENTS

| | |
|-----------------------------------|----|
| TABLE OF CONTENTS | 2 |
| SPECIFICATIONS | 4 |
| Overview | 4 |
| Basic Information | 4 |
| Dimensions | 4 |
| Speed, Capacities and Weight | 5 |
| Accommodations | 5 |
| Hull and Deck Information | 5 |
| Engine Information | 5 |
| DETAILED INFORMATION | 6 |
| Accommodations | 6 |
| Galley | 6 |
| Electronics & Navigation | 6 |
| Construction | 7 |
| Deck | 7 |
| Engines | 7 |
| Recent Works Completed & Upgrades | 8 |
| Remarks | 8 |
| Exclusions | 8 |
| Exclusions | 8 |
| Disclaimer | 9 |
| PHOTOS | 10 |
| Pilothouse | 10 |
| Portside Pilothouse | 10 |
| Aft Bulkhead Pilothouse | 10 |
| View Aft from Galley to Salon | 10 |
| Salon Dining | 10 |
| Galley | 10 |

| | |
|-------------------------|----|
| Galley | 11 |
| Forward Upper Bunk | 11 |
| Aft Starboard Bunk | 11 |
| Flybridge Helm | 11 |
| Upper Deck View Forward | 11 |
| Flybridge Helm Covered | 11 |
| Upper Deck View Aft | 12 |
| Bow | 12 |
| Aft Deck | 12 |
| Aft Deck | 12 |
| Covered Walkarounds | 12 |
| Engine Room 1 | 12 |
| Engine Room 2 | 13 |
| Engine Room 3 | 13 |
| Engine Room 4 | 13 |
| Out of Water Profile | 13 |
| 3 Shafts & Propellers | 14 |
| Starboard | 14 |
| Port | 14 |
| Starboard Stern | 14 |
| Starboard | 14 |
| CONTACTS | 15 |
| Contact details | 15 |
| Telephones | 15 |
| Office hours | 15 |
| Address | 15 |

SPECIFICATIONS

Overview

Sellers have recently completed out of water hull inspections, repainting and servicing of marine gear. Additionally they have done machinery updates including exhausts and oil coolers.

Built as an ocean going yacht with the exceptional fuel capacity of 4,000 gallons, this Bill Garden designed long range trawler is powered by three diesel engines. The GM 6-71 main engine is fresh from overhaul, and the Westerbeke wing motors run well and are designed for maneuvering and the safety of redundancy in long range passage making.

The same family has owned this vessel for 23 years and the second generation owner has recently had the boat ultrasound inspected and re-plated the bottom to insure the integrity for years to come. Centrally located galley with light and open salon. Sleeps 6 in 3 staterooms. Long range cruising yacht to explore ... anywhere your dreams will take you.

Basic Information

Category: Trawler

Sub Category: Long Range Cruiser

Model Year: 1967

Year Built: 1967

Country: United States

Vessel Top: Open

Fly Bridge: Yes

Cockpit: Yes

Dimensions

LOA: 48' 0" (14.63m)

Beam: 14' 0" (4.27m)

Speed, Capacities and Weight

Cruise Speed: 7 Kts. (8 MPH)

Cruise Speed RPM: 1500 Kts.

Max Speed: 9 Kts. (10 MPH)

Displacement: 84000 Pounds

Water Capacity: 450 Gallons

Holding Tank: 20 Gallons

Fuel Capacity: 4000 Gallons

Accommodations

Total Cabins: 3

Sleeps: 6

Total Heads: 3

Hull and Deck Information

Hull Material: Steel

Hull Designer: Bill Garden / Ed Monk

Engine Information

Engines: 3

Manufacturer: GM

Model: 6-71N + (2) Westerbeke/Perkins

Fuel Type: Diesel

DETAILED INFORMATION

Accommodations

Sleeps six in three staterooms with heads & showers both forward and aft. On-deck day head adjacent to galley for a total of three heads. Electric heat in master and second stateroom. Access to the forepeak bunks is through a companionway forward from the wheel-house, leading also to the mid-ship stateroom with twin bunks. There is a door aft giving entry to the engine room.

Seating and dining seating for all in main salon. Butterfly hatches allow light and air into galley and master cabin aft. Sound system with speakers on aft deck and salon. Excellent storage. Carpet (new 2013). Dinette upholstery is white and in excellent condition. Port and starboard side doors and aft deck door. Opening circular portholes (9) in salon/galley. Spacious, covered side walkways. Double helm seat inside and bench seat at upper helm station.

Galley

- Excellent galley with spacious L- shaped counter, fiddles & storage
- King two-burner range with fridge below
- Separate freezer below counter
- Oven with rotisserie
- Double stainless steel sink with fresh hot & cold water
- Opening circular portholes (9) in salon/galley

Electronics & Navigation

- 7.5kw Kohler genset (2682 hrs)
- Windo cruise generator works on central engine (for use underway)
- Hiverson Flat Ships compass with quadranel spheres
- Shore power isolation transformers
- Stray current monitor
- Garmin GPSMAP 740S Touch Screen Marina Chart-plotter, Depth Sounder & fish finder with sea temperature
- (2) Simrad AP35 autopilot control units, flybridge and wheelhouse
- Furuno Radar
- Data Marine Offshore System 3000
- Raytheon Fathometer, model DE7626B with repeaters on bridge
- Data Marine knot/log meter, model Navigator
- Log Distance display
- Inclinometers

- Air Temp indicator and barometer
- Mather 15000 SSB (in-op)
- Searchlight
- ICM422 VHF
- 3 Sets of engine controls
- Ships Bell

Construction

The basic hull design is a Commercial Albacore Fisherman credited in design to both Ed Monk & Bill Garden in surveys dating back 25 years. The sweeping shear line resembles the Garden boats, more so than Monk. Hull construction was by the WEST WINDS Inc. shipyard in San Francisco in 1967. Hull construction is 3/16" M.S. with a 1/4" M.S. bottom. The bottom was sandblasted to the waterline and inspected. Bottom re-plated where indicated. Hull was taken to bare metal (2008) & prepped & painted with full coating system.

All tanks are integral and have recently been inspected, and the water tank being re-coated with appropriate material for that purpose. Engine room bilges repainted during hull repair and during main engine overhaul.

Deck

- Steel self bailing decks with non-skid surface
- 11' 6 " Boston Whaler on deck with 15 hp Evinrude outboard motor
- Mast and deck boom davit to launch & retrieve skiff, and for stabilizers and Paravanes
- Deck funnel and top deck butterfly man hatch for galley ventilation with port-lights
- Covered side decks on main deck with butterfly man hatch over aft stateroom quarters
- Albina DC anchor windlass with foot switch and all chain rode & Navy anchor
- Aft deck winch and deck boxes with reversing seat backs for fishing. One deck box fitted as bait tank
- Secure access to spacious flybridge
- Deckcrane
- Stabilizer arms with robust "fish" fins keep her solid underway and at anchor

Engines

The unique feature separating this from most all other long range vessels of this size is that the propulsion is with three engines, each having independent shaft & propellers. The main GM 6-71 N has been recently overhauled and can be documented as such. (60 hours SMOH) The main engine has an Allison reduction gear, turning a 38" x 26" four bladed wheel, thru a 3" Monel tail shaft & steel intermediate shaft. Allison gear was also rebuilt (60 hours).

With a cruising speed of 7.5 knots @ 1500 RPM the fuel consumption is 4.5 gallons per hour. Maximum RPM is 2200. The main engine also has a Power Take-Off and a cruising Generator. Also there is a Kohler 7.5kw generator in the engine room.

The "wing" motors are a pair of Westerbeke / Perkins, 72 hp. 4-236 diesels, (Port: 1701 hours / Starboard: 1647 hours) with Velvet Drive reduction gears, each turning a 22" x 14" propeller. Racor fuel filtration and fuel manifold to manage tankage. Pyrometer for all 3 engines. Estimated range of 5000 nm. (2) 25 gallon oil tanks storage.

Recent Works Completed & Upgrades

Dry dock (Feb 2015) Surveyors inspection of steel thickness Bottom painted Props repainted with VEROX barnacle barrier Exterior touch up paint.

Engine Maintenance (Feb 2015) Transmission oil coolers replaced on two wing engines. Serviced with New transmission fluid. Starboard engine exhaust replaced Heat exchanger for port engine exhaust replaced Heat exchanger for starboard engine exhaust reconditioned Both wing engines coolant system serviced

Remarks

Built as an ocean going yacht with the exceptional fuel capacity of 4,000 gallons, this Bill Garden designed long range trawler is powered by three diesel engines. The GM 6-71 main engine is fresh from overhaul, and the Westerbeke wing motors run well and are designed for maneuvering and the safety of redundancy in long range passage making.

The same family has owned this vessel for 23 years and the second generation owner has recently had the boat ultrasound inspected and re-plated the bottom to insure the integrity for years to come. Centrally located galley with light and open salon. Sleeps 6 in 3 staterooms. Long range cruising yacht to explore ... anywhere your dreams will take you.

Exclusions

All personal gear; loose items; galley gear; CD's; charts; fishing equipment; tools; spare parts; supplies & items not specifically listed on equipment list specifications sheet.

Exclusions

Owner's personal belongings.

Disclaimer

The Company offers the details of this vessel or yacht in good faith but cannot guarantee or warrant the accuracy of this information nor warrant the condition of the vessel. A buyer should instruct his representatives, agents, or his surveyors, to investigate such details as the buyer desires validated. This vessel or yacht is offered subject to prior sale, price change, or withdrawal without notice.

PHOTOS

Pilothouse



Portside Pilothouse



Aft Bulkhead Pilothouse



View Aft from Galley to Salon



Salon Dining



Galley



Galley



Forward Upper Bunk



Aft Starboard Bunk



Flybridge Helm



Upper Deck View Forward



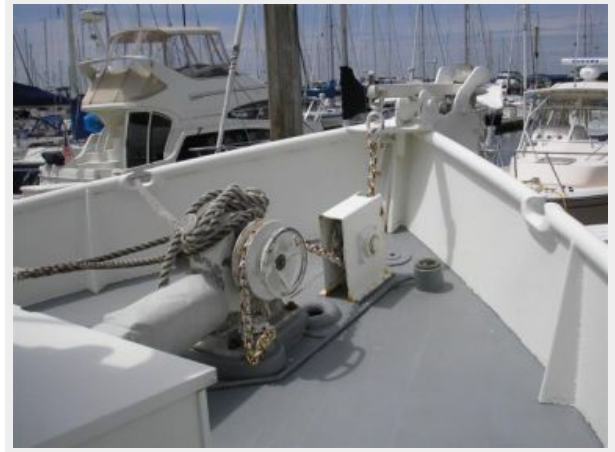
Flybridge Helm Covered



Upper Deck View Aft



Bow



Aft Deck



Aft Deck



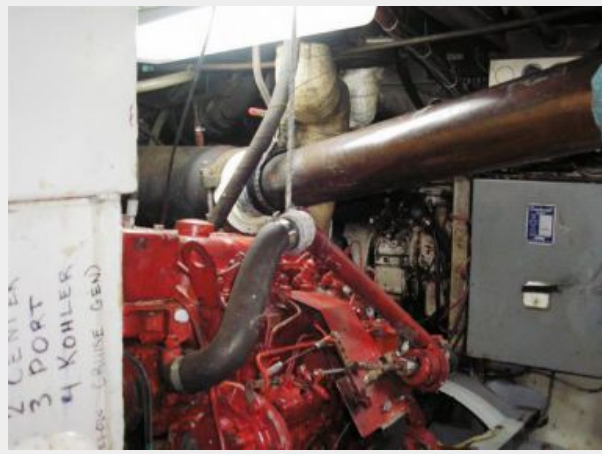
Covered Walkarounds



Engine Room 1



Engine Room 2



Engine Room 3



Engine Room 4



Out of Water Profile



3 Shafts & Propellers



Starboard



Port



Starboard Stern



Starboard



CONTACTS

Andrey Shestakov, leading yacht broker of the sales department of Shestakov Yacht Sales Inc. Shestakov Yacht Sales Inc., the official representative of the Miami/Fort Lauderdale FL headquarters.

Contact details

Email: andrey@shestakovyachtsales.com

Web: shestakovyachtsales.com/en/

Telephones

USA: +1(954)274-4435

Office hours

Monday – Saturday: **9:00 - 21:00** EDT

Sunday: **closed**

Address



Harbour Towne Marina, 850 NE 3rd St,
STE 213, Dania, FL 33004