

WEST WINDS — WEST WINDS



Судостроитель: West Winds

Год постройки: 1967

Модель: Траулер

Цена: **ЦЕНА ЯХТЫ ПО ЗАПРОСУ**

Местонахождение: United States

Длина общая: 48' 0" (14.63m)

Ширина: 14' 0" (4.27m)

Крейс. скорость: 7 Kts. (8 MPH)

Макс. скорость: 9 Kts. (10 MPH)

Купить WEST WINDS — West Winds а также выбрать подходящую вам яхту из нашего каталога яхт вам поможет опытный яхтенный брокер Андрей Шестаков. На сегодняшний день компания Shestakov Yacht Sales Inc. имеет большое количество яхт в собственном списке продаж, а также тесно сотрудничает со всеми крупными яхтенными производителями по всему миру.

Для того чтобы купить яхту WEST WINDS — West Winds а также проконсультироваться по любому вопросу связанному с покупкой, продажей, чартером яхт позвоните по телефону **+7(918)465-66-44**.

ОГЛАВЛЕНИЕ

ОГЛАВЛЕНИЕ	2
ХАРАКТЕРИСТИКИ	4
Обзор	4
Основная информация	4
Размеры	4
Скорость, вместимость и масса	5
Размещение	5
Корпус и палуба	5
Информация о двигателе	5
ПОДРОБНОЕ ОПИСАНИЕ	6
Accommodations	6
Galley	6
Electronics & Navigation	6
Construction	7
Deck	7
Engines	7
Recent Works Completed & Upgrades	8
Remarks	8
Exclusions	8
Исключения	8
Отказ от ответственности	9
ФОТОГРАФИИ	10
Pilothouse	10
Portside Pilothouse	10
Aft Bulkhead Pilothouse	10
View Aft from Galley to Salon	10
Salon Dining	10
Galley	10

Galley	11
Forward Upper Bunk	11
Aft Starboard Bunk	11
Flybridge Helm	11
Upper Deck View Forward	11
Flybridge Helm Covered	11
Upper Deck View Aft	12
Bow	12
Aft Deck	12
Aft Deck	12
Covered Walkarounds	12
Engine Room 1	12
Engine Room 2	13
Engine Room 3	13
Engine Room 4	13
Out of Water Profile	13
3 Shafts & Propellers	14
Starboard	14
Port	14
Starboard Stern	14
Starboard	14
КОНТАКТЫ	15
Контактная информация	15
Телефоны	15
Время работы	15
Адрес	15

ХАРАКТЕРИСТИКИ

Обзор

Sellers have recently completed out of water hull inspections, repainting and servicing of marine gear. Additionally they have done machinery updates including exhausts and oil coolers.

Built as an ocean going yacht with the exceptional fuel capacity of 4,000 gallons, this Bill Garden designed long range trawler is powered by three diesel engines. The GM 6-71 main engine is fresh from overhaul, and the Westerbeke wing motors run well and are designed for maneuvering and the safety of redundancy in long range passage making.

The same family has owned this vessel for 23 years and the second generation owner has recently had the boat ultrasound inspected and re-plated the bottom to insure the integrity for years to come. Centrally located galley with light and open salon. Sleeps 6 in 3 staterooms. Long range cruising yacht to explore ... anywhere your dreams will take you.

Основная информация

Тип судна: Траулер

Подкатегория: Long Range Cruiser

Модельный год: 1967

Год постройки: 1967

Страна: United States

Верх: Open

Открытая палуба мостика: Да

Кубрик: Да

Размеры

Длина общая: 48' 0" (14.63m)

Ширина: 14' 0" (4.27m)

Скорость, вместимость и масса

Крейс. скорость: 7 Kts. (8 MPH)

Крейсерская скорость поворота: 1500 Kts.

Макс. скорость: 9 Kts. (10 MPH)

Водоизмещение: 84000 Pounds

Вместимость воды: 450 Gallons

Вместимость сточного бака: 20 Gallons

Объем топливного бака: 4000 Gallons

Размещение

Всего кают: 3

Спальные места: 6

Всего ком. состава: 3

Корпус и палуба

Материал корпуса: Steel

Дизайнер корпуса: Bill Garden / Ed Monk

Информация о двигателе

Двигатели: 3

Производитель: GM

Модель: 6-71N + (2) Westerbeke/Perkins

Тип топлива: Diesel

ПОДРОБНОЕ ОПИСАНИЕ

Accommodations

Sleeps six in three staterooms with heads & showers both forward and aft. On-deck day head adjacent to galley for a total of three heads. Electric heat in master and second stateroom. Access to the forepeak bunks is through a companionway forward from the wheel-house, leading also to the mid-ship stateroom with twin bunks. There is a door aft giving entry to the engine room.

Seating and dining seating for all in main salon. Butterfly hatches allow light and air into galley and master cabin aft. Sound system with speakers on aft deck and salon. Excellent storage. Carpet (new 2013). Dinette upholstery is white and in excellent condition. Port and starboard side doors and aft deck door. Opening circular portholes (9) in salon/galley. Spacious, covered side walkways. Double helm seat inside and bench seat at upper helm station.

Galley

- Excellent galley with spacious L- shaped counter, fiddles & storage
- King two-burner range with fridge below
- Separate freezer below counter
- Oven with rotisserie
- Double stainless steel sink with fresh hot & cold water
- Opening circular portholes (9) in salon/galley

Electronics & Navigation

- 7.5kw Kohler genset (2682 hrs)
- Windo cruise generator works on central engine (for use underway)
- Hiverson Flat Ships compass with quadranel spheres
- Shore power isolation transformers
- Stray current monitor
- Garmin GPSMAP 740S Touch Screen Marina Chart-plotter, Depth Sounder & fish finder with sea temperature
- (2) Simrad AP35 autopilot control units, flybridge and wheelhouse
- Furuno Radar
- Data Marine Offshore System 3000
- Raytheon Fathometer, model DE7626B with repeaters on bridge
- Data Marine knot/log meter, model Navigator
- Log Distance display
- Inclinometers

- Air Temp indicator and barometer
- Mather 15000 SSB (in-op)
- Searchlight
- ICM422 VHF
- 3 Sets of engine controls
- Ships Bell

Construction

The basic hull design is a Commercial Albacore Fisherman credited in design to both Ed Monk & Bill Garden in surveys dating back 25 years. The sweeping shear line resembles the Garden boats, more so than Monk. Hull construction was by the WEST WINDS Inc. shipyard in San Francisco in 1967. Hull construction is 3/16" M.S. with a 1/4" M.S. bottom. The bottom was sandblasted to the waterline and inspected. Bottom re-plated where indicated. Hull was taken to bare metal (2008) & prepped & painted with full coating system.

All tanks are integral and have recently been inspected, and the water tank being re-coated with appropriate material for that purpose. Engine room bilges repainted during hull repair and during main engine overhaul.

Deck

- Steel self bailing decks with non-skid surface
- 11' 6 " Boston Whaler on deck with 15 hp Evinrude outboard motor
- Mast and deck boom davit to launch & retrieve skiff, and for stabilizers and Paravanes
- Deck funnel and top deck butterfly man hatch for galley ventilation with port-lights
- Covered side decks on main deck with butterfly man hatch over aft stateroom quarters
- Albina DC anchor windlass with foot switch and all chain rode & Navy anchor
- Aft deck winch and deck boxes with reversing seat backs for fishing. One deck box fitted as bait tank
- Secure access to spacious flybridge
- Deckcrane
- Stabilizer arms with robust "fish" fins keep her solid underway and at anchor

Engines

The unique feature separating this from most all other long range vessels of this size is that the propulsion is with three engines, each having independent shaft & propellers. The main GM 6-71 N has been recently overhauled and can be documented as such. (60 hours SMOH) The main engine has an Allison reduction gear, turning a 38" x 26" four bladed wheel, thru a 3" Monel tail shaft & steel intermediate shaft. Allison gear was also rebuilt (60 hours).

With a cruising speed of 7.5 knots @ 1500 RPM the fuel consumption is 4.5 gallons per hour. Maximum RPM is 2200. The main engine also has a Power Take-Off and a cruising Generator. Also there is a Kohler 7.5kw generator in the engine room.

The "wing" motors are a pair of Westerbeke / Perkins, 72 hp. 4-236 diesels, (Port: 1701 hours / Starboard: 1647 hours) with Velvet Drive reduction gears, each turning a 22" x 14" propeller. Racor fuel filtration and fuel manifold to manage tankage. Pyrometer for all 3 engines. Estimated range of 5000 nm. (2) 25 gallon oil tanks storage.

Recent Works Completed & Upgrades

Dry dock (Feb 2015) Surveyors inspection of steel thickness Bottom painted Props repainted with VEROX barnacle barrier Exterior touch up paint.

Engine Maintenance (Feb 2015) Transmission oil coolers replaced on two wing engines. Serviced with New transmission fluid. Starboard engine exhaust replaced Heat exchanger for port engine exhaust replaced Heat exchanger for starboard engine exhaust reconditioned Both wing engines coolant system serviced

Remarks

Built as an ocean going yacht with the exceptional fuel capacity of 4,000 gallons, this Bill Garden designed long range trawler is powered by three diesel engines. The GM 6-71 main engine is fresh from overhaul, and the Westerbeke wing motors run well and are designed for maneuvering and the safety of redundancy in long range passage making.

The same family has owned this vessel for 23 years and the second generation owner has recently had the boat ultrasound inspected and re-plated the bottom to insure the integrity for years to come. Centrally located galley with light and open salon. Sleeps 6 in 3 staterooms. Long range cruising yacht to explore ... anywhere your dreams will take you.

Exclusions

All personal gear; loose items; galley gear; CD's; charts; fishing equipment; tools; spare parts; supplies & items not specifically listed on equipment list specifications sheet.

Исключения

При продаже яхты исключаются личные вещи владельца.

Отказ от ответственности

Компания предоставляет описание судна или яхты добросовестно, но не может гарантировать точность этой информации, а также не ручается за техническое состояние. Покупатель должен проинструктировать своих агентов или оценщиков исследовать представленную информацию более подробно, по собственному желанию. Продажа судна или яхты, изменение цены или снятие с продажи будет происходить без предварительного уведомления.

ФОТОГРАФИИ

Pilothouse



Portside Pilothouse



Aft Bulkhead Pilothouse



View Aft from Galley to Salon



Salon Dining



Galley



Galley



Forward Upper Bunk



Aft Starboard Bunk



Flybridge Helm



Upper Deck View Forward



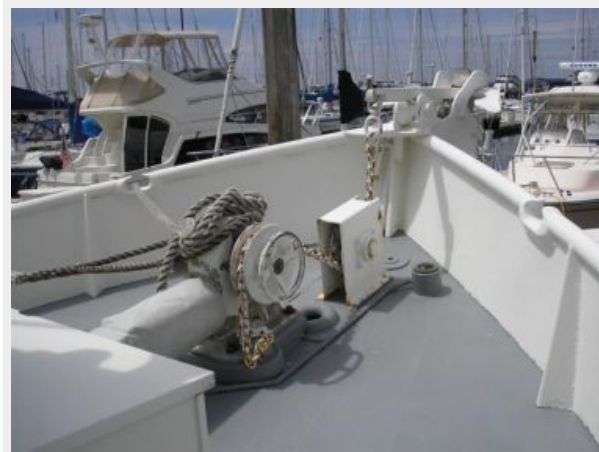
Flybridge Helm Covered



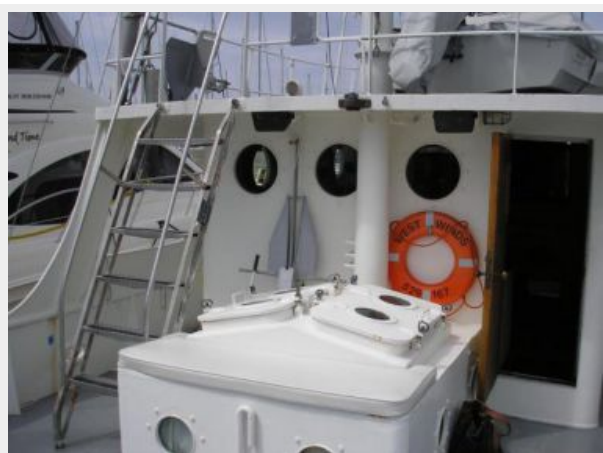
Upper Deck View Aft



Bow



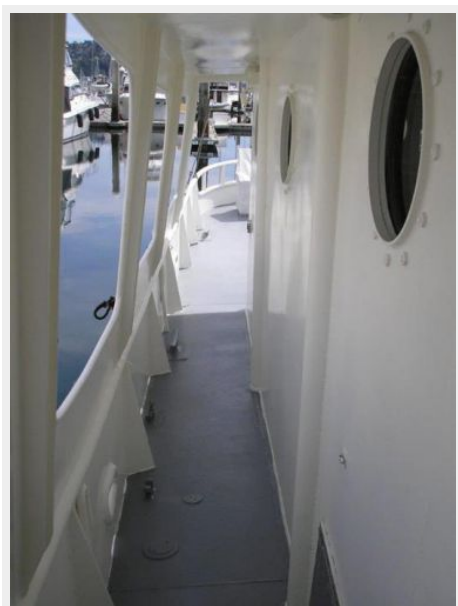
Aft Deck



Aft Deck



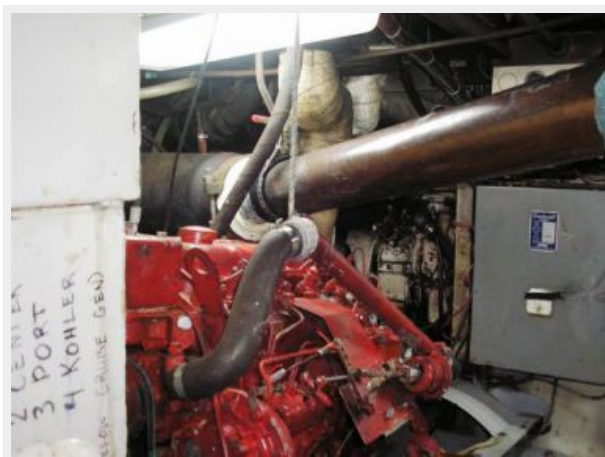
Covered Walkarounds



Engine Room 1



Engine Room 2



Engine Room 3



Engine Room 4



Out of Water Profile



3 Shafts & Propellers



Starboard



Port



Starboard Stern



Starboard



КОНТАКТЫ

Андрей Шестаков (Andrey Shestakov) – ведущий яхтенный брокер отдела продаж яхт и судов компании Shestakov Yacht Sales Inc. Официальный представитель Shestakov Yacht Sales Inc. для русскоговорящих клиентов в центральном офисе компании в Майами/Форт Лодердейл/Флорида/США.

Контактная информация

Email: andrey@shestakovyachtsales.com

Web: shestakovyachtsales.com

Телефоны

Краснодарский край: **+7(918)465-66-44**

США, Майами, Флорида: **+1(954)274-4435**

Время работы

Понедельник – Суббота: **9:00 - 21:00**
EDT

Воскресенье: **Закрето**

Адрес



Harbour Towne Marina, 850 NE 3rd St,
STE 213, Dania, FL 33004