

NO VACANCY — HATTERAS



Судостроитель: HATTERAS

Год постройки: 2002

Модель: Моторная яхта

Цена: **ЦЕНА ЯХТЫ ПО ЗАПРОСУ**

Местонахождение: United States

Длина общая: 63' 0" (19.20m)

Ширина: 18' 3" (5.56m)

Макс. осадка: 4' 11" (1.50m)

Крейс. скорость: 24 Kts. (28 MPH)

Макс. скорость: 29 Kts. (33 MPH)

Купить **NO VACANCY — HATTERAS** а также выбрать подходящую вам яхту из нашего каталога яхт вам поможет опытный яхтенный брокер Андрей Шестаков. На сегодняшний день компания Shestakov Yacht Sales Inc. имеет большое количество яхт в собственном списке продаж, а также тесно сотрудничает со всеми крупными яхтенными производителями по всему миру.

Для того чтобы купить яхту **NO VACANCY — HATTERAS** а также проконсультироваться по любому вопросу связанному с покупкой, продажей, чартером яхт позвоните по телефону **+7(918)465-66-44**.

ОГЛАВЛЕНИЕ

ОГЛАВЛЕНИЕ	2
ХАРАКТЕРИСТИКИ	5
Основная информация	5
Размеры	5
Скорость, вместимость и масса	5
Размещение	5
Корпус и палуба	6
Информация о двигателе	6
ПОДРОБНОЕ ОПИСАНИЕ	7
Vessel walkthrough	7
Salon	8
Galley	8
Pilothouse	9
Master Head	9
Guest Stateroom	10
Guest/Day Head	10
VIP Guest Stateroom	10
VIP Guest Head	11
Flybridge	11
Flybridge Helm Area	11
Electronics	12
Deck Equipment	12
Lazzerette/Utility Room	13
Engine Room/Mechanical Equipment	14
Electrical System	15
Additional Information	15
Исключения	16
Отказ от ответственности	16

ФОТОГРАФИИ	17
Aft Deck	17
Port Profile	17
Aft Deck	17
Salon	17
Salon	17
Salon Sofa	17
Galley	18
Pilothouse Helm	18
Washer/Dryer	18
Pilothouse Settee	18
Master Stateroom	18
Master Stateroom	18
Master Stateroom	19
Master Head	19
Guest/Day Head	19
Guest Stateroom	19
VIP Head	20
VIP Guest Stateroom	20
Boat Deck Lounge	20
Boat Deck Lounge	20
Flybridge Settee	20
Boat Deck Lounge	20
Flybridge Helm	21
Flybridge Wetbar	21
Foredeck Sun Pad	21
Flybridge Forward	21
Lazzerette	21
Engine Room	21

Port Engine	22
Starboard Engine	22
Flybridge & Main Deck Arrangements	22
Lower Deck Arrangement	22
TNT Dinghy Lift	22
КОНТАКТЫ	23
Контактная информация	23
Телефоны	23
Время работы	23
Адрес	23

ХАРАКТЕРИСТИКИ

Основная информация

Тип судна: Моторная яхта

Подкатегория: Raised Pilothouse

Модельный год: 2003

Год постройки: 2002

Страна: United States

Верх: 2353

Размеры

Длина общая: 63' 0" (19.20m)

Длина по ватерлинии: 53' 11" (16.43m)

Ширина: 18' 3" (5.56m)

Макс. осадка: 4' 11" (1.50m)

Трапы: 18' 10" (5.74m)

Длина привального бруса: 63' 0"
(19.20m)

Скорость, вместимость и масса

Крейс. скорость: 24 Kts. (28 MPH)

Макс. скорость: 29 Kts. (33 MPH)

Водоизмещение: 113500 Pounds

Вместимость воды: 280 Gallons

Вместимость сточного бака: 100 Gallons Объем топливного бака: 1228 Gallons

Размещение

Всего кают: 3

Всего коек: 4

Спальные места: 6

Всего ком. состава: 3

Корпус и палуба

Материал корпуса: Fiberglass

Материал палубы: Fiberglass

Комплектация корпуса: Modified V-Hull

Цвет корпуса: White

Информация о двигателе

Двигатели: 2

Производитель: Caterpillar

Модель: 3412 E

Тип двигателя: Inboard

Тип топлива: Diesel

ПОДРОБНОЕ ОПИСАНИЕ

Vessel walkthrough

NO VACANCY offers an incredibly spacious interior with high gloss Makore (African Cherry) wood joiner work throughout. The open main salon features a custom-built L-shaped lounge with storage beneath, a wet bar with ice maker, and an entertainment center. Forward of the salon lies a fully equipped galley offering teak and maple Amtico sole, solid surface Avonite counter tops and under-counter Sub Zero drawer refrigeration. Climate control is evenly distributed across the salon and galley through fluted Makore wood valences and privacy is provided by matching wood blinds. The open floor plan continues into the pilothouse where an L-shaped dinette is situated just aft of the helm and companion chairs. Designed for the owner / operator, quick and convenient side deck access is gained via a pantograph door on the starboard side of the pilothouse.

Below-deck accommodations include a three-stateroom, three-head arrangement. The bow or VIP stateroom features a walk around queen berth with cedar lined hanging locker, hull side cabinetry, and abundant drawer space. Top quality soft goods are found throughout the staterooms and cedar lined storage is found beneath all berths. The VIP stateroom has its own private head with stall shower, teak and maple Amtico flooring, black solid surface vanity and plexiglass mirrored ceiling, making the area feel even larger than it is. The guest or third stateroom is to starboard and aft of the VIP stateroom, it features large upper/lower bunks, hanging locker, reading lamps and a portlight. Directly across the companionway is the guest/day head with stall shower and all the features found in the VIP head. Aft through arched framed double doors is the amid-ships en suite master stateroom. It features a large hanging locker, built in dressers and nightstands as well as an oversize queen berth athwartships. The master head is again quite large with a tub/shower, teak and maple Amtico flooring, Makore wood vanity with black solid surface counter and plexiglass mirrored ceiling.

The flybridge is accessed from a stainless steel floating stairway on the starboard side of the pilothouse. Designed to entertain a crowd, it features a large port side L-shaped cushioned settee with table, starboard side wet bar with Sub Zero wine cooler and additional bench seating. The helm is forward on the port side. Aft of the settee on the forward boat deck the davit is cleverly concealed in a fiberglass enclosure. The boat deck has been converted into a convertible lounging, sunning area with three large removable fold up cushions. A custom stainless guard rail surrounds the perimeter of the boat deck for safety.

The aft deck benefits from the protection of the boat deck overhang for shade above and has a built in cushioned bench seat across the transom as well as a large varnished teak table and custom bench for entertaining and dining al fresco. The full walk-around side decks are accessed forward, port or starboard on the aft deck. Molded stairs from the aft deck lead down to the fully integrated swim platform and adjacent dinghy lift.

The lazarette utility room and engine room are accessed either through a hatch in the center of

the aft deck or through a pantograph water tight door in the center of the transom. There is an abundance of storage for spare parts, tools, and various equipment and provisions as well as two additional Sub Zero freezer drawers. Forward, through a water tight door, is the spacious stand up engine room. In the Hatteras tradition it is brightly lit and offers easy access to all equipment and mechanical systems.

Salon

- High gloss Makore wood (African Cherry) paneling
- LShaped sectional sofa in cream UltraLeather with storage beneath
- Custom round cocktail table
- Custom side table with lamp
- Carpeted sole
- Whisperwall panel headliner
- Fluted Makore wood valances and wood blinds in recessed pockets
- Dual zone air conditioning vented through decorative Makore valances
- Stainless steel three glass panel door to aft deck with safety lock
- Entertainment center
- Toshiba 32" LCD TV
- Yamaha RX V1200 AV surround receiver
- Sony DVD/CD player
- ULine stainless door icemaker
- Smoke Detector

Galley

The galley is located forward of the salon and is slightly recessed. This U-shaped galley is fully equipped with all of the amenities necessary to prepare intricate gourmet or simple meals.

- (2) Sub Zero under counter refrigerator drawers
- (2) Sub Zero under counter freezer drawers
- Whirlpool 4burner cooktop and oven
- Sharp microwave/convection oven
- Insinkerator garbage disposal in large single stainless steel sink
- Franke faucet
- Kenmore dishwasher
- Avonite solid black countertops
- Large pullout drawers with safety locks for pantry storage
- Water level gauge
- Electronic water tank indicator
- Amtico vinyl strip teak & maple sole
- High gloss Makore wood paneling

- Whisperwall panel headliner
- Dimmable lighting

Pilothouse

The pilothouse is located forward and up 4 steps from the salon and galley. There is a large L-shaped settee, Avonite table and two helm chairs. The helm layout offers excellent sight lines and easy access to all navigational equipment.

- High gloss Makore wood paneling
- Amtico vinyl strip teak & maple sole
- L shaped lounge w/ black Avonite table on double pedestals
- Storage area with flat top for charts
- Tracey power helm & companion chairs
- Curved steps with lights to lower companionway
- Intermittent electric windshield wiper/washers with controls
- Windshield cover for privacy
- Hydraulic power assisted steering
- Single lever clutch and throttle controls
- Compass with dimmable light
- (2) Caterpillar MPD displays
- Control station with all necessary switches and dimmable lighted instruments
- Electric fuel level gauges
- Automatic fuel transfer pump system with safety shutoff
- AC / DC distribution panels
- AC switching panel
- AC / DC lighting fixtures
- AC duplex outlets
- Telephone outlet
- Welded and polished 316L stainless steel steps to flybridge
- Watertight lockable door to flybridge
- Storage locker with light
- Stereo speakers with volume control
- Defogger
- Bennett Trim Tab controls

Master Head

- Freshwater vacuflush toilet
- Tub with glass sliding door
- Oversized opening port light
- Amtico vinyl strip flooring

- Storage cabinet with mirror
- Mirrored ceiling
- Wood cabinets
- Air conditioning vent
- 120 volt AC blower

Guest Stateroom

- Upper and lower berth with hinged storage beneath the lower berth
- Nightstand with drawers
- Carpeting
- Cedar-lined hanging locker with automatic lights
- Full length mirror
- Stereo speakers with volume controls
- Port light with screen
- AC dimmable lights
- Table lamp
- Smoke detector

Guest/Day Head

- Mirrored ceiling
- Stall shower with seat, sliding door and auto sump pump
- Avonite countertop and backsplash
- Wood base cabinet with mirror
- Freshwater Vacuflush toilet
- Blower
- Port light with screen

VIP Guest Stateroom

- Queen berth with custom mattress & upholstered headboard
- Cedar-lined storage area beneath berth
- Low level lighting
- Full length mirror
- Two nightstands
- Cedar-lined hanging locker with automatic light
- Overhead hatch with screen and privacy cover
- Panasonic 13" TV w/built-in VCR
- Stereo speakers with volume control
- Telephone outlet

- Smoke detector

VIP Guest Head

- Stall shower with seat, sliding door and auto sump
- Freshwater Vacuflush toilet
- Amtico flooring
- Avonite countertop and backsplash
- Blower
- Mirrored ceiling
- Wood base cabinet with storage
- Storage cabinet and mirror
- Port light with screen

Flybridge

- Fiberglass non skid decks
- Helm area forward to port
- Plexiglass windscreen w/stainless steel rail
- Starboard side wet bar w/Sub Zero refrigerator sink & storage cabinet under
- Starboard side bench seat w/removable cushions & cover
- Portside L shaped seating w/removable cushions & storage below
- Corner table
- Aluminum radar arch
- (2) Courtesy lights on radar arch
- Sunbrella Bimini Top w/ 3 sided isenglass enclosure
- Quick Release freshwater wash down connection
- (4) Bose flush mount marine stereo speakers
- (2) Bose 151 Environmental speakers mounted inside radar arch

Flybridge Helm Area

- Tracey mounted helm & companion chairs
- Hatteras alarm panel MM1-110
- Fire system release handle
- (2) ACR searchlight controls
- American Bow Thruster control w/joystick
- Caterpillar MPD digital engine displays
- Sturdy electronic clutch & throttle controls, single lever
- Bennett trim tab controls
- Horn button

- (3) Bilge pump indicator lights
- Tilt helm wheel
- Carbon fiber dash

Electronics

All electronics are duplicated at upper & lower helms. GPS chartplotter, radar, Thermal imaging camera and CCTV are all integrated into Simrad Glass Bridge system. Simrad GB 60 Glass Bridge black box PC based navigation system

- (4) Simrad 15" Glass Bridge monitors (2 Lower helm, 2 Flybridge)
- Simrad AP 20 autopilot
- Simrad digital radar
- Simrad GPS
- Flir thermal imaging night vision camera
- Northstar 952 X GPS/chart plotter
- Raymarine Tri Data depth, speed, sea temperature
- (2) Icom IC M127Icom VHF radios
- (4) CCTV cameras

Deck Equipment

Foredeck

- Fiberglass non skid decks
- 70 lb. Stainless steel plow anchor w/290' chain
- Maxwell 2200 electric anchor windlass
- Up & down foot switches for windlass
- Welded stainless steel bow rail
- Welded bow pennant staff
- Bomar Foredeck hatch
- (2) Bow cleats & chocks
- (4) Spring line cleats
- Removable Foredeck sun pad
- (6) Drink holders at sun pad
- Stainless steel handrails at sun pad
- Deck pump out for waste tank
- Stainless steel house handrails, port & starboard
- (2) ACR RCL 100 searchlights on bridge superstructure
- Khalenberg dual trumpet air horns on bridge superstructure
- Starboard side deck Pantograph door to Wheelhouse
- Rail break at starboard side boarding door
- Marquipt Tide Ride ladder attachment points at side door

- International Navigation lights

Aft Deck

- Fiberglass non skid deck
- Custom dual pedestal varnished teak table with maple inlay
- Custom varnished teak bench seat
- Bench seat aft for 4 -5 people w/removable cushions & cover
- Port & starboard pilaster storage lockers
- Port & starboard pilaster stainless steel railings
- (5) Stainless steel trimmed overhead lights
- (2) Overhead stereo speakers w/volume control
- Starboard side hinged transom boarding gate
- Stainless steel trimmed entry door to Salon
- (2) Non skid port & starboard steps to side deck
- Marquipt Tide Ride ladder attachment points at side entry a
- GFCI outlet

Swim Platform

- (2) Fiberglass steps to Aft Deck w/courtesy lights
- Pantograph Transom door to Lazzarette/Engine Room
- (2) 50 amp/240 volt shore cords on Glendinning cable reel
- Dockside television & telephone inlets
- Whale hot & cold transom shower behind fiberglass door
- (2) Pop up tender cleats
- Freshwater wash down spigot
- Dockside water connector
- Swim ladder under platform
- TNT modified hydraulic lift aft of swim platform
- Socket for TNT lift remote control

Boat Deck Area

- Fiberglass non skid decks
- Nautical Structures 1100# dinghy davit w/custom fiberglass enclosure
- KVH G 4 Trac Vision Sat dome
- KVH "dummy" dome
- (2) stereo speakers
- (3) Sunbrella covered convertible sunpad/mezzanine cushions
- Custom stainless boat deck perimeter guard rails

Lazzarette/Utility Room

- High water alarm

- (2) Shore power cord reels
- (2) Incandescent DC hold lights
- (2) Fluorescent AC lights
- Husky stainless tool box
- Two drawer Sub Zero refrigerator/freezer
- 5 Step ladder to Aft Deck
- Watertight door to Engine Room
- (2) Hydraulic steering actuators
- Autopilot feedback sensor
- Rudder angle indicator sensor
- Trim tab pump
- Dripless rudder packings
- Fuel transfer selector valve
- Smoke alarm

Engine Room/Mechanical Equipment

- (4) Auto/manual electric bilge pumps
- 6 Point Reverso oil change pump w/Quick Disconnect fitting
- (2) Duplex Racor 1000 fuel filters w/vacuum gauges
- (2) fuel priming pumps
- (2) Fuel transfer pumps
- 25 h.p. ABT hydraulic bow thruster
- Bow thruster PTO off port generator
- Bow thruster hydraulic oil reservoir
- (2) Racor 500 fuel filters (generators)
- Dripless shaft seals
- (3) 110V air conditioner raw water pumps
- Harbor Master System high water alarm
- (5) Incandescent DC engine room lights
- (6) Fluorescent AC engine room lights
- Fire alarm indicator/sensorDelta T hull side ventilator filters for engine room air intake
- (2) Head Hunter Mach 5 freshwater pressure pumps
- 30 gallon hot water heater
- Central Vacuum system
- 110 Volt electric air compressor w/expansion tank
- (6) Cruiseair air conditioning compressors: 50,000 BTU, 5000 BTU, 10,000 BTU, 10,000 BTU, 24,000 BTU, 36,000 BTU
- 57 lb. Sea Fire FM 200 fire suppression system
- Walker Air Sep crankcase ventilation system
- Engine Room start/stop key switches
- Mechanical engine gauge panels w/tach, oil pressure, water temp, drive oil, fuel pressure, oil, temp & amp gauges

- Engine hour meters
- 7 Step Marquipt boarding ladder in Engine Room
- Hydraulic steering reservoir
- Hynautic hydraulic steering
- 3 1/2" stainless prop shafts
- ZF BW2555 transmissions w/3.45:1 ratios
- Michigan 39" x 73.5" 7-blade Nibral Propellors
- (4) Coolant recovery bottles, (2) for engines, (2) for generators
- Engine block heaters
- Freshwater spigot w/hose in Engine Room
- Sturdy electronic engine controls
- (3) Ocean LED blue transom underwater lights

Electrical System

- 12 Volt/24 volt DC electrical system
- 110 Volt/220 volt AC electrical system
- Port 21.5 KW Onan generator in sound shields, 1600 hrs.
- Starboard 21.5 KW Onan generator in sound shields, 1500 hrs.
- Master Volt battery charger 24 volt 50 amp
- (4) 8D batteries
- (2) Shore power transformers
- AC electrical panel in Engine Room
- DC electrical panel in Engine Room
- (4) Battery cutoff switches
- Newmar 32-12-50 convertor for electronics
- 120/240 Volt ship's service #1 in Pilothouse w/(18) breaker protected circuits
- 120/240 Volt ship's service #2 panel in Engine Room w/(12) breaker protected circuits
- 120/240 Volt ship's service #3 panel in Engine Room w/(12) breaker protected circuits
- 120/240 Volt ship's service #4 panel in Engine Room w/(7) breaker protected circuits
- Windlass breaker in Engine Room
- Battery isolator
- Control system indicator
- 24 Volt ship service panel #1 in Pilothouse w/(20) breaker protected circuits
- 24 Volt ship service panel #2 in Engine Room w/(16) breaker protected circuits
- Pilothouse switching panel for shore 1/shore 2/gen 1/gen 2
- Selective voltage boost transformers w/selector switch in Pilothouse

Additional Information

NO VACANCY benefits as one of the last 63 Raised Pilothouses built by Hatteras. Her new paint job, additional tender lift system, low hours and updated electronics make her the the most

desirable example currently in the market.

Исключения

При продаже яхты исключаются личные вещи владельца.

Отказ от ответственности

Компания предоставляет описание судна или яхты добросовестно, но не может гарантировать точность этой информации, а также не ручается за техническое состояние. Покупатель должен проинструктировать своих агентов или оценщиков исследовать представленную информацию более подробно, по собственному желанию. Продажа судна или яхты, изменение цены или снятие с продажи будет происходить без предварительного уведомления.

ФОТОГРАФИИ

Port Profile



Aft Deck



Aft Deck



Salon



Salon



Salon Sofa



Galley



Pilothouse Helm



Washer/Dryer



Pilothouse Settee



Master Stateroom



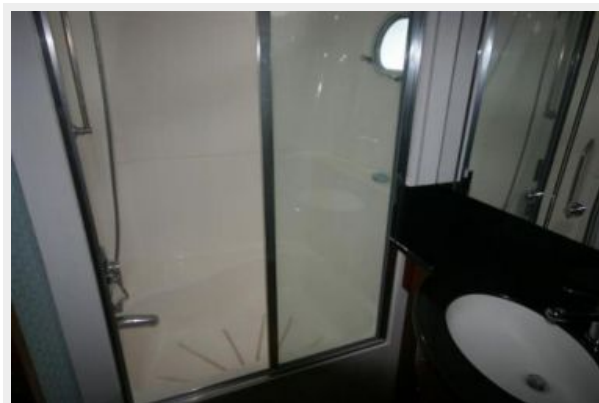
Master Stateroom



Master Stateroom



Master Head



Guest Stateroom



Guest/Day Head



VIP Guest Stateroom



VIP Head



Boat Deck Lounge



Boat Deck Lounge



Boat Deck Lounge



Flybridge Settee



Flybridge Helm



Flybridge Wetbar



Flybridge Forward



Foredeck Sun Pad



Lazzerette



Engine Room



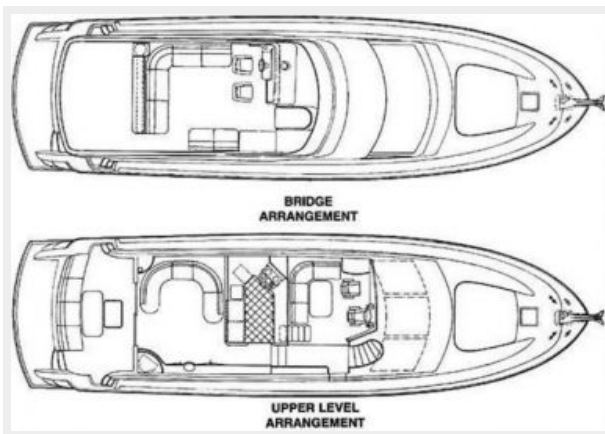
Port Engine



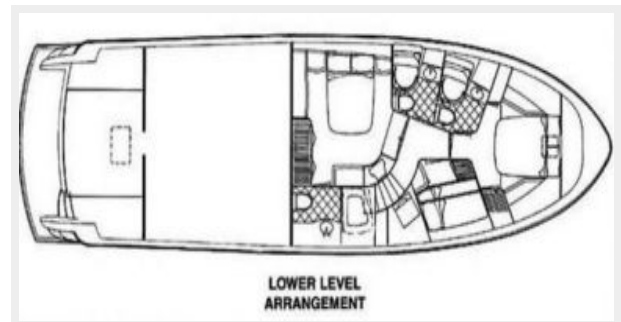
Starboard Engine



Flybridge & Main Deck Arrangements



Lower Deck Arrangement



TNT Dinghy Lift



КОНТАКТЫ

Андрей Шестаков (Andrey Shestakov) – ведущий яхтенный брокер отдела продаж яхт и судов компании Shestakov Yacht Sales Inc. Официальный представитель Shestakov Yacht Sales Inc. для русскоговорящих клиентов в центральном офисе компании в Майами/Форт Лодердейл/Флорида/США.

Контактная информация

Email: andrey@shestakovyachtsales.com

Web: shestakovyachtsales.com

Телефоны

Краснодарский край: **+7(918)465-66-44**

США, Майами, Флорида: **+1(954)274-4435**

Время работы

Понедельник – Суббота: **9:00 - 21:00**
EDT

Воскресенье: **Закрито**

Адрес



Harbour Towne Marina, 850 NE 3rd St,
STE 213, Dania, FL 33004