

CAPRICO — BURGER



Судостроитель: BURGER

Год постройки: 1987

Модель: Моторная яхта

Цена: ЦЕНА ЯХТЫ ПО ЗАПРОСУ

Местонахождение: United States

Длина общая: 80' 0" (24.38m)

Ширина: 19' 5" (5.92m)

Макс. осадка: 5' 5" (1.65m)

Купить **CAPRICO — BURGER** а также выбрать подходящую вам яхту из нашего каталога яхт вам поможет опытный яхтенный брокер Андрей Шестаков. На сегодняшний день компания **Shestakov Yacht Sales Inc.** имеет большое количество яхт в собственном списке продаж, а также тесно сотрудничает со всеми крупными яхтенными производителями по всему миру.

Для того чтобы купить яхту **CAPRICO — BURGER** а также проконсультироваться по любому вопросу связанному с покупкой, продажей, чартером яхт позвоните по телефону **+7(918)465-66-44**.

ОГЛАВЛЕНИЕ

ОГЛАВЛЕНИЕ	2
ХАРАКТЕРИСТИКИ	7
Обзор	7
Основная информация	7
Размеры	7
Скорость, вместимость и масса	7
Размещение	8
Корпус и палуба	8
Информация о двигателе	8
ПОДРОБНОЕ ОПИСАНИЕ	9
Features	9
Vessel Walkthrough	11
Enclosed Aft Deck	11
Salon	12
On Deck Head	13
Entertainment & Convenience	13
Galley	13
Pilot House	14
Owners & Guest Stateroom	14
Master Stateroom Aft	15
Master Heads	15
VIP Stateroom	15
VIP En Suite Head	16
Guest Stateroom	16
Guest Head	16
Crew Quarters	16
Fly Bridge	17
Flybridge Helm & Electronics	18

Deck	18
Electrical System	19
Engine Room & Mechanical	19
Exclusions	20
Исключения	20
Отказ от ответственности	20
ФОТОГРАФИИ	21
Profile	21
Profile	21
Profile	21
Aft Deck	21
Aft Deck	21
Aft Deck	21
Aft Deck	22
Aft Deck	22
Aft Deck Bar	22
Aft Deck Bar	22
Aft Deck Bar	22
Aft Deck Bar	22
Aft Deck	23
Salon	23
Salon	23
Salon	23
Salon	23
Salon	23
Stairs to Master & Guest Cabins	24
Salon Day Head	24
Galley	24
Galley	24

Galley	25
Pilot House	25
Pilot House	25
Pilot House	25
Pilot House	26
Pilot House	26
Pilot House	26
Pilot House	26
Pilot House Flybridge Steps	27
Crew Steps	27
Master Full Beam Center Line	27
Master Full Beam Center Line	27
Master Ensuite Head	28
Master His Head	28
Master Her Closet	28
Master His Closet	28
Hallway to Cabins	29
VIP Twin Beds	29
VIP Ensuite Head	29
VIP Twin Beds	29
VIP Ensuite Shower	30
VIP Closet	30
Guest Cabin Closet	30
Guest Cabin	30
Guest Cabin TV	31
Crew Lounge	31
Crew Lounge	31
Crew Lounge	31
Captain Double Berth	32

Crew Upper Lower Bunks	32
Crew Head & Shower	32
Flybridge Helm Seats	32
Flybridge Helm	33
Flybridge Helm	33
Flybridge	33
Flybridge	33
Flybridge	33
Flybridge	33
Master Ensuite Tub & Shower	34
Flybridge BBQ	34
Flybridge Wet Bar	34
Flybridge Mast	34
Dinghy & Davit	35
Dinghy	35
Dinghy	35
Dinghy	35
Engine Room	36
Dinghy Yamaha	36
Engine Room	36
Engine Room	36
Engine Room	37
Engine Room	37
Engine Room	37
Engine Room Washer & Dryer	37
Deck Port Side	38
Deck Starboard Side	38
Foredeck	38
Deck Chairs	38

Deck Chairs	38
КОНТАКТЫ	39
Контактная информация	39
Телефоны	39
Время работы	39
Адрес	39

ХАРАКТЕРИСТИКИ

Обзор

Classic Flush Deck PH Fly Bridge Motor Yacht

Pedigree Jack Hargrave Design

Quality Burger Construction

Beautifully Maintained & Ready to Cruise

Casual Elegance Throughout

3 Staterooms, 5 Heads, 1 Captain, & 2 Crew

Bottom Stripped, Primed & Painted 2014

Основная информация

Тип судна: Моторная яхта

Модельный год: 1987

Год постройки: 1987

Страна: United States

Размеры

Длина общая: 80' 0" (24.38m)

Ширина: 19' 5" (5.92m)

Макс. осадка: 5' 5" (1.65m)

Трапы: 28' 0" (8.53m)

Скорость, вместимость и масса

Вместимость воды: 750 Gallons

Объем топливного бака: 2995 Gallons

Размещение

Всего кают: 3

Всего ком. состава: 5

Каюта капитана: Да

Каюты экипажа: 1

Койки экипажа: 2

Корпус и палуба

Материал корпуса: Aluminum

Информация о двигателе

Двигатели: 2

Производитель: Detroit Diesel

Модель: 12V71T1

Тип двигателя: Inboard

Тип топлива: Diesel

ПОДРОБНОЕ ОПИСАНИЕ

Features

- Twin DD 12V71 TI 870 HP
- Raymarine HybridTouch Plotter
- Niad Stabilizers
- Bennett Trim Tab Indicators
- Glendinning Single Lever Controls
- (2) 35KW Northern Light Gensets
- SAT/TV (Four Receivers)
- Stevens SEA 222 Single Side Band
- Hydraulic Bow Thruster
- 12 Ton Chilled Water A/C
- Air Conditioned Engine Room
- Pipe Welders Bimini
- 18' Nautica w/100HP Yamaha 4 Stroke
- Electric Dingy Davit

- Full Beam Master Stateroom
- Centerline Master King Size Bed
- His & Hers Baths
- Ensuite
- (2) Double Guest Cabins
- Custom Day Head on Main Deck
- Beautiful Burl wood Salon Cabinetry
- Beautiful Aft Deck w/Dual A/C & Heat
- Built-in Aft Deck Table & Seating
- Teak Decking
- Modern Galley w/SS Appliances
- Granite Galley Counter Tops
- Captain's Cabin w/ Double Berth
- Crew's Cabin Upper & Lower Berths
- Crew's Head, Shower, & Lounge

Own this piece of yachting history. Famous for their soft ride and classic style, no other vessel better captures the essence of the traditional American Motor Yacht than the Hargrave designed Burger built Flush Deck Pilot House Motor Yacht.

All New Since March 2011:

Bottom Stripped, Primed, & Painted Oct 2011 The following was repainted with Awlgrip: Entire Fly Bridge, brow, gunnels around teak teaks, forward from pilot house door to door on the main deck, and the sheer stripe

- New Chroming on Top Deck, Pilot House
- New Custom Covers for Outside Cushions
- All New Foredeck & Fly Bridge Stereo Speakers
- New Raymarine HybridTouch GPS Plotter 2012
- New On-Deck Head Installed
- Restored Burlled Wood Cabinets in Salon
- 36" Sony LED TV in Salon
- Salon Stereo Sound System
- New Salon Blinds
- New Custom Salon Furniture
- All New Carpet Through Out
- Entire Interior Wall Covering
- New Wine Cooler
- New Aft Deck Ice Maker, June 2014
- New Aft Deck Isinglass Curtains
- New Aft Deck Furniture
- All New Digital Climate Controls
- All New Port Lights
- All New Batteries
- Two New Chillers, Raw Water and Circulation Pumps
- Engine Exhaust Blankets
- Synchronizers Rebuilt
- New Custom Windscreen Flybridge

New in 2007:

- Sound insulation under carpeting by Soundown in salon, aft deck, all staterooms aft and hallway
- Refinished main salon mahogany paneling with varnish
- Nobeltec Chart Plotter 2007
- Satellite TV
- Overhauled tender: new tubes, added chart depth finder and new cover
- Overhauled windlass
- New emergency bilge pump
- Overhauled interior of black water tank
- New battery charger
- Recover leather pilothouse helm bench and flybridge helm chairs (3) and crew cushions
- Sub Zero refrigerator compressor (2007)
- General service to engine equipment
- New varnished teak and holly sole in galley and the three aft heads
- New granite countertops in galley
- Refinished bath tub in master head, chromed all fittings, new sinks and faucets
- New galley sink and faucet

Vessel Walkthrough

This flush deck pilot house motor yacht has two living areas, a galley, pilot house, 3 owners' and guest cabins, 2 crews' cabins, crews' dinette, 5 heads, teak decks and an expansive freshly painted fly bridge.

The aft deck living area, salon, on-deck head, galley and pilot house are all on the main deck. Average head room is 6'5". One of the best recent improvements to this vessel is the addition of the day head on the main deck between the salon and the galley. All carpeting is new since 2011. Teak & glass wing doors as well as starboard & port pilot house sliding doors lead to beautiful teak side decks covered by the fly bridge over hang and teak foredeck with a built in lounge, storage, and deck boxes.

Aft in the salon on the main deck on the port side, the burl wood book shelves frame the curved stair well leading down to the full beam master suite aft, three heads, and the two double guest cabins to port and starboard. There is a linen closet in the hallway between the two guest cabins. All opening ports, wall coverings and carpeting were replaced in 2011.

This full beam master stateroom is phenomenal! You must see this to believe it. It is bright and cheerful with four large opening ports, fresh wall coverings and new carpeting, which were all replaced in 2011. You will appreciate the centerline king, "His & Hers" heads with teak and holly soles, Jacuzzi tub, vanity, desk, and expansive built-in cabinetry.

The guest cabins are to port & starboard forward of the master suite. Each has twin beds with drawer storage under, a built-in night stand, a cedar lined hanging locker, and two new large opening ports with screens and curtains. The VIP has an ensuite head with separate shower and teak & holly sole. "His" head & shower has a second door for access to the hallway so that it can be used as the guest head when needed.

Back up to the main deck and moving forward from the pilot house, a curved stairway leads down to the engine room and crews' quarters. Stairs with a pneumatic hatch lead up to the expansive fly bridge with fresh paint and all new speakers and stereo. The fly bridge offers comfortable seating for a large party, a full wet bar with refrigerator and stereo, BBQ, Pipewelder's bimini, and a tender with davit.

Enclosed Aft Deck

The aft deck of this classic beauty is unusually spacious, and delightfully airy and inviting; offering a beautiful sunlit panoramic view. It is a wonderful place for relaxing or entertaining any time of day or night. Teak and glass wing doors, sliding glass side windows and roll up aft isinglass (2011) can be opened up to let the breezes flow through or two (reverse cycle) heat and A/C units can be used if the weather is less than perfect. Varnished teak furniture includes the built in aft seating, built in teak cabinets forward with a full wet bar, refrigerator, and ice maker (2014); four teak and rattan chairs (2011); two teak tables (2011); and a large teak table. All teak

furniture and cabinetry is finished with high gloss varnish. The carpet is bordered with teak & holly flooring. A transom gate on the starboard side provides access to the swim platform and swim ladder. There is storage under the built in aft settee as well as access to the lazarette which houses the steering gear, batteries (new 2011), and spare props.

- High gloss varnished teak
- (2) Reverse cycle heat & A/C units
- Full teak built in wet bar
- Refrigerator
- Ice maker (2014)
- Carpet (2011)
- Teak & holly flooring borders carpet
- Teak & glass wing doors
- Sliding glass side windows
- Roll up aft isinglass (2011)
- Built in aft settee
- Aft high low teak table
- (4) Teak and rattan chairs (2011)
- (2) Teak tables (2011)
- Transom door
- Swim platform w/swim ladder
- Lazarette

Salon

Moving forward through the varnished teak and glass doors from the aft deck, the salon is beautifully appointed and recently updated. One of the best recent improvements to this vessel is the addition of the day head on the main deck between the salon and the galley. The addition of the on deck head is so well executed that you would think it was original equipment. And it's such a great idea, you wonder why it wasn't there from the beginning.

- Opening side windows
- White drapes
- Teak valances
- New since 2011:
- Custom furniture and desk with custom covers in place since new
- On deck head with teak & holly floor
- Flat screen TV
- Custom painted doors to cover TV
- All new carpet
- New salon blinds
- Restored burl wood cabinets in salon
- New book case with banister rails

- Refinished in 2007
- Mahogany paneling and trim

On Deck Head

The addition of the on deck head since 2011 is so well executed that you would think it was original equipment. And it's such a great idea, you wonder why it wasn't there from the beginning.

- Teak & holly flooring
- Teak & holly vanity counter top
- Oval wood framed mirror
- Head

Entertainment & Convenience

- SAT/TV
- 36' Sony LED salon TV 2011
- Central Vacuum
- Chilled water a/c system
- (2) 60,000 BTU chillers (new 2011) (4) Air Handlers replaced, new digital controls
- Salon stereo (new 2011)
- Flybridge stereo speakers (new 2011)
- Wine cooler (new 2011)
- R/O Water for Aft Deck, Galley and Owner's Stateroom

Galley

- Head room 6' 8"
- Opening Window
- Reverse cycle A/C control
- Granite counter tops & back splashes 2007
- Teak & holly sole refinished 2007
- Bosch 4 burner cook top 2007
- Kitchen Aid oven
- Frigidaire microwave oven
- Dual sinks 2007
- Disposal
- Instant hot water
- Sub Zero 18 Cu. Ft. Refrigerator
- Under counter Sub Zero large freezer

- Kitchen Aid ice maker
- Additional 16 Cu. Ft. freezer in crews' quarters
- Dishwasher
- Kenmore trash compactor
- Sony AM/FM/CD clock radio
- Exhaust Fan
- Central vacuum

Pilot House

- Port & Starboard sliding teak and glass doors
- Traditional wood spoke wheel with stainless ring
- Glendinning single lever engine and shift controls, updated 2011
- Naiad stabilizer control w/ Koopnautic brain upgrade
- Furuno xx" Display
- Nobeltec PC based navigation software
- PC computer
- Furuno GPS/WAAS Navigator
- Furuno Model 412 72 mile radar
- Simrad AP 25 autopilot
- Hydraulic bow thruster control
- Furuno RD-30 depth and water temp
- Trim tab control
- Trim tab indicator
- New VHF 2014
- Kahlenberg double trumpet air horns
- Stevens SEA 222 single side band radio
- Searchlight control
- Port & starboard generator controls
- Clock & barometer set re-chromed 2011
- Wave Talk SAT phone
- Panasonic phone system
- (3) Compressed air windshield wipers
- Alarm system- bilge, engine, and fire
- Engine emergency shut offs

Owners & Guest Stateroom

Aft in the salon on the main deck on the port side, the burlwood bookshelves frame the curved stairwell leading down to the full beam master suite aft, three heads, and the two double guest cabins to port and starboard. There is a linen closet in the hallway between the two guest cabins. All opening ports, wall coverings and carpeting were replaced in 2011.

Master Stateroom Aft

This mater stateroom is phenomenal! You must see this to believe it. All opening ports, wall coverings and carpeting were replaced in 2011.

- 6'4" headroom
- Full beam master stateroom
- Centerline king size bed
- (4) Opening ports (new in 2011)
- Screens & curtains
- Port & starboard night stands
- Desk
- Vanity
- Generous drawer storage
- Larger cedar lined hanging lockers port & starboard
- New carpeting 2011
- Sounddown insulation under carpeting 2007
- New wall coverings 2011
- Safe

Master Heads

- "His & Hers" ensuite heads w/ showers
- "His" has door to hallway for guest head when needed
- Tub (hers)
- Teak & holly sole (both)
- (2) Opening ports (one each- new in 2011)
- Teak & holly counter top (his)

VIP Stateroom

The VIP stateroom is forward of the master suite and to starboard with an ensuite head and shower.

- Twin berths w/ drawer storage under
- Night stand
- Cedar lined hanging locker
- (2) Opening ports (new in 2011)
- New Carpet and wall coverings 2011
- Ensuite head and shower

VIP En Suite Head

- Vanity
- Shower
- Opening port (new in 2011)
- Teak & holly sole
- Teak & holly counter top

Guest Stateroom

Opposite the VIP, on the starboard side is the second guest stateroom.

- Twin berths w/ drawer storage under
- Night stand
- Cedar lined hanging locker
- (2) Opening ports (new in 2011)
- New Carpet and wall coverings 2011

Guest Head

"His" master head has access to the hallway and can be used as a guest head or day head when needed.

- Vanity
- Shower
- Teak & holly flooring and counter top
- Opening port (new in 2011)

Crew Quarters

Crews' quarters, trimmed in a light stained ash with satin varnish, are forward and down the curved stairway from the pilot house leading directly into the dinette area with 7' head room. Aft from the dinette is the engine room. Forward are the captain's cabin with a (double) berth to port and the crews' double cabin with single over under berths to starboard. Accessible from both cabins, and all the way forward, are the head and separate shower.

Captain's Cabin:

- Double berth
- 2 Opening ports
- Desk
- Cedar hanging locker

- Ample storage
- A/C control
- Safe

Crew:

- Over/Under single berths
- 2 Opening ports
- Cedar hanging locker
- TV
- Storage

Dinette:

- Opening port
- Engine room access
- L-shaped settee
- High low table
- Wine cooler (2011)
- Samsung flat screen TV

Head & Shower:

- 2 Opening ports
- Deck hatch
- Vanity
- Forepeak Shower
- Access to both crew cabins

Fly Bridge

The fly bridge is a party waiting to happen! Up the pilot house stairs through the pneumatic hatch is the expansive fly bridge that has undergone complete refinishing since 2011. Two long settees and lots of open space partially shaded by a large PipeWelders bimini will comfortably accommodate a crowd with room to dance. All new speakers, all new paint, and new chrome give the feel and appearance of a brand new boat. The mast is hinged with a hydraulic control.

- PipeWelders bimini top
- (3) Helm and mate seats
- Functional well equipped fly bridge helm
- Starboard & port settees
- New Awlgrip paint (2011)
- New chrome (2011)
- New fly bridge stereo and speakers (2011)

- Custom weather upholstery covers
- Wet Bar
- Refrigerator
- BBQ
- Hydraulic hinged mast
- 18' Nautica CC inflatable tender 1999
- Yamaha 100 HP 4 stroke OB 2002
- Marquipt 2500 Lb. davit
- Fly bridge drains to water line
- New windscreen custom and custom enclosures for charts, sink, radio and instruments

Flybridge Helm & Electronics

The fly bridge helm offers comfortable seating and great visibility for the helms person and two others in three helm chairs. The mast is hinged with a hydraulic control.

- Glendinning single lever engine and shift controls (Refurbished 2011)
- Raymarine Hybridtouch 12" GPS Plotter (New in 2012)
- Simrad AP 25 autopilot
- Furuno RD-30 depth & temp
- Kahlenberg double trumpet air horns
- Icom IC-M604 VHF (New 2012)
- Hydraulic bow thruster control
- Trim tab control
- Trim tab indicator
- Sony Marine CDX-M30 AM/FM/CD
- New fly bridge speakers 2011, New Stereo 2011
- ACR Epirb
- New custom windscreen and instrument enclosures

Deck

Teak & glass wing doors as well as starboard & port pilot house sliding doors lead to natural teak side decks covered by the fly bridge over hang and teak foredeck with a built in lounge, storage, and deck boxes.

The following was repainted with Awlgrip in 2011:

Entire Fly Bridge, brow, gunnels around teak teaks, forward from pilot house door to door on the main deck, and the sheer stripe

- Teak decking
- Wide, secure port & starboard side decks

- Fly bridge overhangs side decks
- Varnished teak hand rails
- Stainless steel bow rail and stanchions
- Varnished teak toe rail
- Foredeck lounge for four with storage behind
- (2) 6' built in deck boxes
- Ideal vertical windlass (overhauled 2007)
- Bruce 50 KG anchor mounted on bow
- 300' chain rode
- Additional anchor and rode stored on deck
- Fresh water wash down
- (2) Teak deck chairs
- Transom door
- Swim platform
- Swim ladder
- Decks drain to water line

Electrical System

All batteries were replaced in 2011.

12 & 32V DC and 120V and 240V AC 60 cycle

- (2) 35 KW Northern Light generators 1200 rpm
- Hours: Port 8793 SMOH; Starboard 998 Hrs. SMOH (hours read June 2013)
- Shore connection: 100 amp single phase & (2) 50 amp
- 32V & 12V Charles battery chargers
- 12V and 32V Danforth chargicators
- 1(2) 12V generator starting batteries (New 2011)
- 32V emergency lighting
- Engine start (2) 32V battery banks, (4) 8 volts each (New 2011)
- Isolation transformers: 100 amp and (2) 50 amp
- Lucite covered electrical panel in engine room
- Smart Y (New 2012)

Engine Room & Mechanical

The engine room, with full standing headroom is very impressive. It is clean, has excellent lighting, and is well organized. Twin 12V-71 TI 870 HP DD engines are heavily chromed and have full walk around access.

- Twin 12V-71 TI 870 HP Detroit Diesel
- New Exhaust blankets 2011

- Full size washer & dryer
- Work bench
- Tool box
- Port & starboard generators outboard
- (2) 60,000 BTU each chilled water A/C chillers (new 2011)
- Naiad stabilizers w/ updated Koopnautic electronic brain
- Hydraulic bow thruster 35 HP
- Halon fire extinguisher system
- Village Marine 1200 GPD water maker
- Kahlenberg double trumpet air horns
- Oil change system
- New grey water pump 2014

Exclusions

The following exclusions do not convey with the vessel:

- Two China Lamps on Aft Deck
- Two Small Tables on Aft Deck
- Two Glass Tables in Salon
- All Paintings

Исключения

При продаже яхты исключаются личные вещи владельца.

Отказ от ответственности

Компания предоставляет описание судна или яхты добросовестно, но не может гарантировать точность этой информации, а также не ручается за техническое состояние. Покупатель должен проинструктировать своих агентов или оценщиков исследовать представленную информацию более подробно, по собственному желанию. Продажа судна или яхты, изменение цены или снятие с продажи будет происходить без предварительного уведомления.

ФОТОГРАФИИ

Profile



Profile



Profile



Aft Deck



Aft Deck



Aft Deck



Aft Deck



Aft Deck



Aft Deck Bar



Aft Deck Bar



Aft Deck Bar



Aft Deck Bar



Aft Deck



Salon



Salon



Salon



Salon



Salon



Stairs to Master & Guest Cabins



Salon Day Head



Galley



Galley



Galley



Pilot House



Pilot House



Pilot House



Pilot House



Pilot House



Pilot House



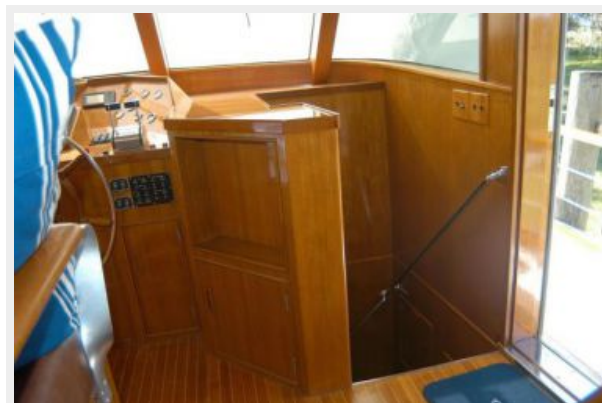
Pilot House



Pilot House Flybridge Steps



Crew Steps



Master Full Beam Center Line



Master Full Beam Center Line



Master Ensuite Head



Master His Head



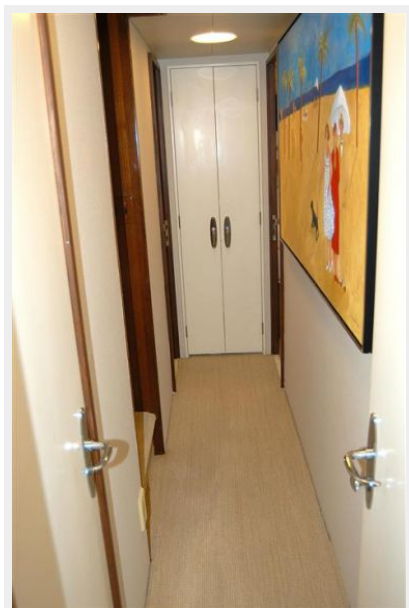
Master Her Closet



Master His Closet



Hallway to Cabins



VIP Twin Beds



VIP Twin Beds



VIP Ensuite Head



VIP Ensuite Shower



VIP Closet



Guest Cabin



Guest Cabin Closet



Guest Cabin TV



Crew Lounge



Crew Lounge



Crew Lounge



Captain Double Berth



Crew Upper Lower Bunks



Crew Head & Shower



Flybridge Helm Seats



Flybridge Helm



Flybridge Helm



Flybridge



Flybridge



Flybridge



Flybridge



Master Ensuite Tub & Shower



Flybridge BBQ



Flybridge Wet Bar



Flybridge Mast



Dinghy & Davit



Dinghy



Dinghy



Dinghy



Dinghy Yamaha



Engine Room



Engine Room



Engine Room



Engine Room



Engine Room



Engine Room



Engine Room Washer & Dryer



Deck Port Side



Deck Starboard Side



Foredeck



Deck Chairs



Deck Chairs



КОНТАКТЫ

Андрей Шестаков (Andrey Shestakov) – ведущий яхтенный брокер отдела продаж яхт и судов компании Shestakov Yacht Sales Inc. Официальный представитель Shestakov Yacht Sales Inc. для русскоговорящих клиентов в центральном офисе компании в Майами/Форт Лодердейл/Флорида/США.

Контактная информация

Email: andrey@shestakovyachtsales.com

Web: shestakovyachtsales.com

Телефоны

Краснодарский край: **+7(918)465-66-44**

США, Майами, Флорида: **+1(954)274-4435**

Время работы

Понедельник – Суббота: **9:00 - 21:00**
EDT

Воскресенье: **Закрито**

Адрес



Harbour Towne Marina, 850 NE 3rd St,
STE 213, Dania, FL 33004