

SEAQUESTERED — NEPTUNUS



Судостроитель: NEPTUNUS

Год постройки: 2005

Модель: Крейсер

Цена: **ЦЕНА ЯХТЫ ПО ЗАПРОСУ**

Местонахождение: United States

Длина общая: 62' 0" (18.90m)

Ширина: 16' 8" (5.08m)

Мин. осадка: 5' 0" (1.52m)

Макс. осадка: 5' 3" (1.60m)

Крейс. скорость: 26 Kts. (30 MPH)

Макс. скорость: 30 Kts. (35 MPH)

Купить **SEAQUESTERED — NEPTUNUS** а также выбрать подходящую вам яхту из нашего каталога яхт вам поможет опытный яхтенный брокер Андрей Шестаков. На сегодняшний день компания **Shestakov Yacht Sales Inc.** имеет большое количество яхт в собственном списке продаж, а также тесно сотрудничает со всеми крупными яхтенными производителями по всему миру.

Для того чтобы купить яхту **SEAQUESTERED — NEPTUNUS** а также проконсультироваться по любому вопросу связанному с покупкой, продажей, чартером яхт позвоните по телефону **+7(918)465-66-44**.

ОГЛАВЛЕНИЕ

ОГЛАВЛЕНИЕ	2
ХАРАКТЕРИСТИКИ	6
Основная информация	6
Размеры	6
Скорость, вместимость и масса	6
Размещение	7
Корпус и палуба	7
Информация о двигателе	7
ПОДРОБНОЕ ОПИСАНИЕ	8
Vessel Walkthrough	8
Salon	8
Galley	8
Lower Helm	9
Day Head	9
Master Suite	10
Master Head	10
Guest Cabin	10
VIP Cabin	11
VIP Head	11
Forward Deck	11
Aft Deck	12
Flybridge Layout	12
Flybridge Equipment	13
Flybridge Navigation Equipment	13
Crew Cabin	13
Engine Room	13
Electrical Equipment	14
Construction Details	14

Recent Refit Projects	15
Remarks	15
Exclusions	15
Disclaimer	15
Исключения	16
Отказ от ответственности	16
ФОТОГРАФИИ	17
Salon Looking Forward	17
Salon to Port	17
Salon to Starboard	17
Salon Looking Aft	17
Salon/Galley	17
Galley Looking Forward	17
Galley to Starboard	18
Galley Looking Forward	18
Galley to Port	18
Lower Helm/Dinette	18
Lower Helm	18
Dinette	18
Companionway Electric Panel	19
Companionway Steps	19
Companionway	19
Companionway Laundry	19
Day Head	19
Master Looking Aft	19
Master Looking to Port	20
Master Looking to Starboard	20
Master Looking Forward	20
Master Head	20

Guest Cabin Looking Aft	20
Guest Cabin Looking Forward	20
Guest Head	21
Guest Shower	21
VIP	21
VIP	21
VIP to Starboard	21
VIP to Port	21
VIP Looking Aft	22
Foredeck	22
Foredeck	22
Foredeck	22
Anchor Detail	22
Side Deck	22
Aft Deck	23
Aft Deck	23
BBQ	23
Flybridge Steps	23
Freshly Refinished Teak	23
Crew to Port	23
Crew to Starboard	24
Flybridge Entrance Steps	24
EZ Flybridge Steps	24
Flybridge Looking Forward	24
Flybridge Looking Forward	24
Helm Detail	24
Helm	25
Helm	25
Portside Helm Area	25

Flybridge Bar	25
Brand New FB Cushions	25
Sun Lounge	25
Sun Lounge	26
Hardtop Equipment	26
Port Engine	26
Starboard Engine	26
Engine Room Forward	26
Engine Room Aft	26
Chilled Water AC	27
CAT Generator	27
Water Makers	27
Charger System	27
Freshly Awl Grippped Engine Room Bilges	27
Alternate Profile	27
At Sea	28
КОНТАКТЫ	29
Контактная информация	29
Телефоны	29
Время работы	29
Адрес	29

ХАРАКТЕРИСТИКИ

Основная информация

Тип судна: Крейсер

Подкатегория: Sedan Cruiser

Модельный год: 2006

Год постройки: 2005

Страна: United States

Верх: Hardtop

Открытая палуба мостика: Да

Размеры

Длина общая: 62' 0" (18.90m)

Длина по ватерлинии: 58' 0" (17.68m)

Длина палубы: 62' 0" (18.90m)

Ширина: 16' 8" (5.08m)

Мин. осадка: 5' 0" (1.52m)

Макс. осадка: 5' 3" (1.60m)

Длина привального бруса: 65' 4"
(19.91m)

Скорость, вместимость и масса

Крейс. скорость: 26 Kts. (30 MPH)

Крейсерская скорость поворота: 2050
Kts.

Дальность на крейсерской скорости:
350

Макс. скорость: 30 Kts. (35 MPH)

Макс. скорость поворота: 2300 Kts.

Водоизмещение: 68000 Pounds

Чистый вес: 34 Pounds

Вместимость воды: 230 Gallons

Вместимость сточного бака: 110 Gallons

Объем топливного бака: 1105 Gallons

Размещение

Всего кают: 3

Всего коек: 4

Спальные места: 6

Всего ком. состава: 4

Каюты экипажа: 1

Койки экипажа: 1

Корпус и палуба

Материал корпуса: Fiberglass

Материал палубы: Teak

Комплектация корпуса: Modified Deep Vee

Цвет корпуса: white

Отделка корпуса: Aluminum

Дизайнер корпуса: Tony Castro

Дизайнер экстерьера: Tony Castro

Дизайнер интерьера: Neptunus Yachts

Информация о двигателе

Двигатели: 2

Производитель: Caterpillar

Модель: C-18

Тип двигателя: Inboard

Тип топлива: Diesel

ПОДРОБНОЕ ОПИСАНИЕ

Vessel Walkthrough

SEAQUESTERED is a Euro Style Sedan Motoryacht with a comfortable Aft Deck, same level Salon with a raised Galley, Dinette and Lower Helm. Below decks are three spacious Staterooms with two and a half Heads. The full width centerline Master takes advantage of the widest part of the vessel. The forward VIP and Twin Berth Stateroom share a Head/shower. The spacious Engine Room is accessed via a hatch in the Aft Deck sole. Under the Aft Deck settee is a surprisingly large Lazarette configured as a Crew Cabin. Top all of these amenities with a fully enclosed air conditioned Flybridge with a portside wing station and room for a crowd.

Salon

The Salon is entered via a curved “Trend” stainless steel sliding door with a full interior drapes and a sliding insect screen.

To port is an Ultra Leather loveseat with storage below. Aft is a three drawer high gloss cherry built in end table. Behind and above the settee are Neptunus signature two level Salon windows. There are full drapes with rope lighting behind the upper valance.

Next forward is a new built in 32” Sony Bravo LCD TV. A cabinet below houses a Bose Lifestyle 48 entertainment system for AM/FM/CD/DVD (5.1 channel), a Direct TV HD receiver, the Sea Teal SAT TV antenna controller and the Glomex broadcast TV antenna.

Starting aft from the starboard side is a small end table, then a four to five person Ultra Leather L shaped sectional with storage below. The same window treatments as the portside are above the sofa. An attractive cherry wood table lies in front of the sofa. The forward end of the sofa terminates into another built in end table with two storage cabinet doors facing the entertainment center. Also in the Salon is an attractive ceiling detail over the coffee table with two halogen mini spots within. There are five mini Bose speakers including a hidden subwoofer, two sconce lights, six additional halogen mini spots, additional storage, a CO detector, telephone outlet, a goose neck reading lamp and a central vacuum outlet.

The new in 2014 carpet is protected by a removable Velcro carpet runner.

Galley

The oversize Galley is two steps up and next forward. It has a bamboo planked sole for durability. To port is a curved cabinet housing a Raritan icemaker (behind a cherry door.) Next forward behind a cherry door are two pull out drawers for storage. Next forward behind a matching cherry door is a Kenmore under counter refrigerator. Furthest forward again behind a

matching cherry door are two pull out drawers. A high gloss cherry countertop with windows and drapes are above the four cabinet doors.

To starboard is the Galley proper with a three level Avonite countertop, an AEG four burner ceramic cook top, a stainless steel built in Panasonic Dimension 4 microwave, broiler and oven. Below the cook top are two oversize Subzero refrigerator drawers (new in 2013). The sink is an under counter stainless steel double sink with an SK removable spray handle, separate drinking water tap and a stainless steel soap dispenser.

Also in the Galley is an Insinkerator food disposal, Whirlpool dishwasher with cherry front, a Tundra freezer, eleven cherry cabinets, two cherry drawers, seven halogen mini spots and a Farber exhaust fan with work lights over the cook top.

Next forward is a U shaped settee for dining. The upholstered Dinette seats four to six and has a unique table that folds in half and has the high gloss cherry finish. There are two halogen mini spots over the table and an abundance of natural light through the full wrap around windshield. A skylight to the Lower Companionway is forward.

Lower Helm

Occupying a small space next to the Dinette is a compact Lower Helm with the following equipment:

Ultra Leather Springfield upholstered helm chair (2) CAT LCD engine monitors Northstar 972 15" plotter/radar/sounder Simrad AP26 autopilot Raymarine ST60 digital depth gauge CAT electronic clutch & throttle controls Raymarine Ray 240 VHF radio w/DSC & remote speaker Teleflex tilting wood helm wheel Vetus bow thruster control Fireboy fire system controls ITT Jabsco searchlight controls Bennett trim tab controls w/LED indicators Start/stop switches Wiper controls Horn Graphic panel to monitor nav lights, Engine Room lights, AC and DC power connections 5" Ritchie high speed compass (2) Storage cabinets below Helm Color 5" LCD camera screen for monitors Intercom

The yacht's AC and DC electrical panel is in the companionway next forward leading to the accommodations.

Day Head

At the bottom of the eight curved stairs (each with an LED step light) from the Salon is the Day Head just aft. This head also serves as a head for the third cabin.

A bow front cherry cabinet with a door below and an under mount stainless steel sink with two tone faucet are forward. Two mirrored medicine cabinet doors are above. The toilet is a Raritan Altantes model. Above the toilet are two additional storage cabinets. The sole is marble tile, the overhead is mirrored and the head door is a cherry pocket door.

Immediately aft is the Master Suite.

Forward still in the Companionway behind cherry cabinets is the yacht's Laundry Center with a standard Whirlpool Heavy Duty washer and dryer.

Master Suite

The Master Suite is entered via an arched door from the forward end of the suite. There is a tapered queen size berth with rope lighting and two storage drawers below. The arched upholstered headboard is affixed to five mirrored panels. There is a small swing arm brass lamp as well as a reading light for each side of the berth. Each side has a built in nightstand with two drawers each. To starboard are seven full size drawers with a cherry countertop. Above are four sliding Soji screens over the oversize hull side port light.

Next forward is a small vanity with stool and mirror. Further forward is the private Master Head.

To port is a built in Panasonic 20" LCD TV, an unusually large two door cedar lined locker with auto light, an Audiovox DVD player and Direct TV HD Sat receiver.

Next aft are seven full size drawers with three sliding Soji screens and a Bose Wave Acoustimass AM/FM/CD player above. The Bose stereo is linked to the Salon's receiver as well.

Also in this cabin are two drawers at the foot of the berth, a soffit over the bed with two halogen mini spots, seven additional halogen mini spots, a hidden safe, a CO monitor and digital AC controls.

Master Head

Accessed only from the Master Suite is the Master Head with bow front cherry vanity with a cabinet below and an under mount sink with two tone single lever faucet above. The countertop is Avonite. There are four mirrored medicine cabinets above, with an oval porthole behind sliding Soji screens.

The toilet is a Raritan Atlantes model. The sole is marble tile and the overhead is mirrored.

The stall shower has a clear acrylic door, a seat, a hand held or wall mountable shower fixture, a light and an exhaust fan.

Guest Cabin

Forward to starboard is the Guest Cabin with twin lower berths (a custom option in lieu of stacked berths) with a three drawer nightstand between. Each berth has an upholstered headboard and one large drawer and two small drawers below facing the cabin's centerline.

Above the outboard berth are two fixed port lights behind a Roman shade with rope lights behind and eight cherry cabinet doors above the shade.

At the foot of the outboard berth is a cedar lined hanging locker. Built into the forward bulkhead is a Toshiba 13" LCD TV. Also in the cabin are four halogen mini spots, CO monitor, a telephone outlet, digital AC controls, valance type AC delivery, carpet runners and a central vacuum outlet.

A clever filler/bridge system allows the two berths to be converted to one as needed.

VIP Cabin

All the way forward is the VIP Cabin with a centerline queen berth, upholstered headboard over a mirrored panel and two swing arm brass reading lights.

There are two large drawers at the foot of the berth. To both port and starboard are built in cherry countertops that serve as nightstands. Above on each side are oval fixed portholes with Roman shades. Further above are four cherry cabinets on each side.

Aft to port is a double door cedar lined hanging locker followed by the entry door to the VIP Head. To starboard is another two door hanging locker with cedar lining and a two Direct TV HD receivers (one for the starboard Guest Cabin).

Facing forward is a built in 13" Toshiba LCD TV with a DVD player and a storage cabinet above and a single drawer vanity with stool below.

Also in this cabin are digital AC controls, a CO detector, Bose Wave Acoustimass AM/FM/CD player linked to the Salon's Bose system, five overhead mini spots, an overhead Bomar escape hatch and arched entry door to the cabin.

VIP Head

The VIP Head is just aft of the VIP Cabin on the port side. It has two entrances, one from the VIP and other from the center companionway. The cherry vanity has a bow front, under mount sink with a two tone faucet above on an Avonite countertop. There is a cabinet door below and three mirrored medicine cabinets above.

The toilet is a Raritan Atlantes model. The stall shower has an acrylic clear door, a light and a hand held or wall mountable shower fixture. Also in this head is a marble tile sole, mirrored overhead, an exhaust fan and a port light with Hunter Douglas Duette shade.

Forward Deck

Heavy Duty stainless steel bow rails Stainless steel anchor pulpit w/bow roller 88 lb. Delta

stainless steel anchor Maxwell 3500 VW Windlass w/150' high tensile chain Up & down foot switches for windlass Bomar hatch to access chain locker Freshwater wash down on bow Heavy duty rub rail Dual spring line cleats International navigation lights Air horn Dual deck fills for fuel port & starboard Stainless steel burgee pole Bow sun pad cushions w/cover & built in drink holder Stainless steel hand rails at bow cushion Black Textulene wrap around windshield cover Frameless cabin side windows Midship stainless steel sliding boarding gates port & starboard (2) Windshield wipers & washers New Sunbrella cushions 2013 w/Stamoid cover

Aft Deck

Teak sole Covered stern cleats w/fairleads Built in fiberglass stairs (7) to Flybridge w/teak treads (2) Hinged stainless steel doors to swim platform (2) Teak deck chairs w/Sunbrella cushions Covered Aft Deck (3) Stainless steel DC lights in Aft Deck overhead Built in Aft Deck seating for four Sea Strike varnished cherry table & covers (new 2013) on twin stainless steel pedestals Wet bar w/sink & Miele electric BBQ grill to port Lockers for line & fender storage Easy access to spacious Crew Cabin below LED exterior courtesy lights TV inlet w/cord Telephone inlet w/cord 750 lb. Capacity hydraulically operated swim platform for tender storage including stainless steel tender cradles Huge full beam Lazarette w/5' of headroom & an abundance of storage (4) Bose stereo speakers Pressure water inlet Deck waste pump out plate Hot & cold shower (2) Stainless steel support poles to Boat Deck Wired docking controls on long cord (2) Flush mount rod holders under hinged cleat covers Overhead custom boarding handless at entrance (4) Clamp on stainless steel rod holders

Flybridge Layout

The Bridge is surprisingly roomy with large U shaped seating with newly upholstered Sunbrella cushions is on the aft portion of the Flybridge to seat six with free form cherry high gloss table on two polished stainless steel bases centered. Next forward is a large bar with an under mount stainless steel sink, bottle storage, a built in ice bucket, two drawers behind a cabinet door and an extra deep storage locker. This area cleverly occupies what was once a single person hot tub on older 62' Neptunus models.

Forward on the portside is a two person upholstered helm seat with wing controls consisting of electronic throttle and clutch controls, bow thruster controls and start/stop switches. Just in front of the seat is an Icom M602 VHF and a Furuno 10.4" Nav Net display.

To starboard is the full Upper Helm with double upholstered helm seat followed by a bar with refrigerator and separate icemaker.

Forward of the Helm is an open sun lounge with exterior newly upholstered Sunbrella sun cushions under canvas and a Venturi windscreen. The remainder of the Flybridge is under the signature Neptunus hardtop with full enclosure and air conditioned comfort.

Flybridge Equipment

(2) Marine Air digital AC controls (4) Access panels for storage in the Helm Area 4 Side EZ2CY enclosure Windshield wiper at Helm Station on safety glass panel (6) Overhead DC stainless steel trimmed lights Red DC night light over Helm (2) Overhead Bose stereo speakers (2) Bose stereo speakers near Helm Raritan icemaker Norcold refrigerator Stainless steel railings around area aft of U shaped seating Stainless steel flag staff on aft rail Hinged top bar w/Corian counter below Nonskid fiberglass decks Life ring w/throw line Fold down ladder to Flybridge hardtop for ease of washing

Flybridge Navigation Equipment

(2) CAT LCD gauge panels for main engines (2) CAT electronic clutch & throttle controls Garmin 4208 8" DGPS plotter/sounder model 4208 Northstar 972 15" plotter/radar Simrad AP25 autopilot Ritchie 5" Powerdamp compass Raymarine ST40 digital depth gauge (2) Electric fuel gauges ITT Jabsco searchlight controls CAT back up panel for gears & throttle Vetus bow thruster controls Bennett trim tab controls w/indicator Raymarine Ray 240 VHF radio w/DSC w/remote speaker (2) Shakespeare VHF signal meters Bilge pump controls w/(3) digital pump readouts Teleflex tilting stainless steel helm wheel w/cover Fireboy override controls for Engine Room fire system Windlass controls w/digital chain counter Portside Furuno Nav Net radar/plotter system Portside ICOM M602 VHF Sea Tel 2498 Sat TV antenna w/dummy dome for matched appearance 12V DC outlet 5" Color LCD screen for camera system (3) Digital LCD bilge pump counters Generator on LED indicator light

Crew Cabin

Accessed via a center opening section of the Aft Deck seating is the single Crew Cabin. A six step teak and stainless steel ladder gives access to the area.

Forward is a single tapered berth with four drawers and a cabinet below. Outboard are two storage cabinets. Immediately aft is a two drawer nightstand.

To starboard is a Raritan Atlantis toilet, a built in Toshiba 13" LCD TV with a DVD player, another two shelf cabinet and aft is a vanity with two cabinet doors below and a stainless steel sink above.

The rudder gear is under a built in shelf aft. Also in this area is a rubber mat flooring, an intercom, three overhead DC lights, a CD detector and Marine Air digital AC controls. Overhead rod storage is aft.

Engine Room

Anti vibration mounts for engines & generators 15 hp Vetus 24 volt DC electric bow thruster (4)

Automatic/manual bilge pumps w/"Ultra" bilge pump switches Grundfos DC freshwater pump Space Saver 30 Gallon hot water heater (5) Fluorescent Engine Room lights (2) 110V GFCI outlets (2) 110V Engine Room fans FRP flooring between engines w/rubber diamond plate nonskid Macerator pump for waste system w/timer 2.5" Aquamet 22 stainless steel shafts Dripless shaft seals Site tubes for both fuel tanks (2) Engine Room blowers 2" Heavy duty insulation material covered w/white aluminum perforated paneling Oil change system for engines, transmission & generator Fireboy 33 lb. automatic fire suppression system Air filters on Engine Room air intakes Teleflex power steering system 4 Step teak & stainless steel boarding/swim ladder Marine Air 72,000 BTU chilled water air conditioning w/(5) air handlers & (3) compressors Dual Racor 1000 FG fuel filters w/vacuum gauges for main engines (1) Racor 500 filter for generator 6 Step stainless steel & teak ladder to Engine Room from Aft Deck (3) Coolant recovery bottles for cooling systems Sea Star hydraulic power steering (2) Engine block heaters ZF 550A Transmissions w/1.97:1 reduction Airsep crankcase ventilation system 422 Gallon aluminum forward fuel tank 683 Gallon aluminum aft fuel tank Oversize Groco sea strainer & sea valves for main engines Workbench in Engine Room 4 Blade 31" x 42" propellers (main props) Site tubes on aluminum fuel tanks (2) Aluminum baffled water tank (1) Aluminum baffled waste tank w/spring loaded valves (2) SK Watermakers 600 GPD each, 315 hrs. aft unit, 239 hrs. forward unit New De Angelo exhaust risers 6/14 Campbell/Hausfeld 110V air compressor Major engine service June 2014 included engine heat exchangers, after coolers, transmission coolers, filters, zincs, valve adjustments, injector service, turbos serviced

Electrical Equipment

110V/220V AC system 12V/24V DC system 21 kW CAT generator in sound shield w/2206 hours June 2014 serviced oil, filters, belts, etc. (3) Banks of 12 volt gel cell batteries separated by blocking diodes as follows: (2) 8D's (450 ah) for house 12V, (2) 4D's (360 ah) for engine starting 24V plus (2) 12 volt batteries for bow thruster (24V system) DC Digital voltmeter DC Digital amp meter AC Digital voltmeter AC Digital amp meter (20) Breaker protected 110 volt AC circuits (8) Breaker protected 220 volt AC circuits (42) Breaker protected DC circuits Central bonding system w/shaft brushes Victron Centaur battery charger for engines 24V, 30 amp Victron Centaur battery charger for thruster 24V, 30 amp Victron Centaur battery charger for house system 12V 100 amp (2) 50 amp Glendinning cord reels w/75' of cord each Generator "on" indicator light at each Helm (3) Battery shutoff switches (2) Galvanic isolators Port engine alternator 85 amps, 28V Starboard engine alternator 135 amps, 14V (3) Gang centrally located GFCI's at main bus 15 KVA isolation transformer

Construction Details

The boat is a composite construction using Kevlar Hybrid materials for superior strength and puncture resistance. Six longitudinal foam stringers and 20 transverse foam stringers enclosed with stitched woven roving, reinforce the entire hull bottom. The hull sides are cored. The engine stringers run from stern to bow with steel top plates for engine mounting. The Deep Vee Hull has been designed to ensure a vessel with excellent sea keep qualities. Special attention

has been given to a ratio between installed power, speed and fuel consumption. Range at 10 knots, 500 miles Range at 21 knots, 350 miles Range at 27 knots, 300 miles

Recent Refit Projects

Owned by an owner who understands ongoing maintenance and improvements
SEAQUESTERED has benefitted by the following projects:

1) Major engine service to include heat exchangers, after coolers, transmission coolers, valve adjustments, injector service, turbos cleaned all filters and fluids, generator service completed June 2014 2) New De Angelo risers turbo fiberglass exhaust tube with hard coat wrapping June 2014 3) Sunbrella bow, aft and Flybridge cushions 2014 4) Aft Deck sun curtains Textulene 3 side 2013 5) Rebuild of hydraulic tender lift 2014 6) Sea Strike custom mahogany Aft Deck table with custom inlay 2013 7) New interior carpet 2014 8) Rebuild of Owner's and VIP Heads 2014 9) New AC raw water pump, old rebuilt as spare 2013 10) Rudder seal replacements 2013 11) New Galley bamboo floor 2013 12) New Galley Sub Zero drawers 2013

This quick list of over \$60,000 are all items needed for a yacht of this age which will ensure the new owner's immediate use with all major items serviced and ready to go.

Remarks

Built in Canada entirely of North American parts the 62' Neptunus is fast, economical compared to her counterparts and roomy. Anyone looking for a 59' - 65' motoryacht must see SEAQUESTERED.

Custom amenities abound in this very clean example of North American "Euro Cruiser".

Exclusions

While every effort was made to list all pertinent included equipment aboard SEAQUESTERED, there are some personal belongings aboard. Prospective purchasers should assume any item not specifically mentioned herein will not convey at closing.

Disclaimer

The Company offers the details of this vessel in good faith but cannot guarantee or warrant the accuracy of this information nor warrant the condition of the vessel. A buyer should instruct his agents, or his surveyors, to investigate such details as the buyer desires validated. This vessel is offered subject to prior sale, price change, or withdrawal without notice.

Исключения

При продаже яхты исключаются личные вещи владельца.

Отказ от ответственности

Компания предоставляет описание судна или яхты добросовестно, но не может гарантировать точность этой информации, а также не ручается за техническое состояние. Покупатель должен проинструктировать своих агентов или оценщиков исследовать представленную информацию более подробно, по собственному желанию. Продажа судна или яхты, изменение цены или снятие с продажи будет происходить без предварительного уведомления.

ФОТОГРАФИИ

Salon Looking Forward



Salon to Port



Salon to Starboard



Salon Looking Aft



Salon/Galley



Galley Looking Forward



Galley to Starboard



Galley Looking Forward



Galley to Port



Lower Helm/Dinette



Lower Helm

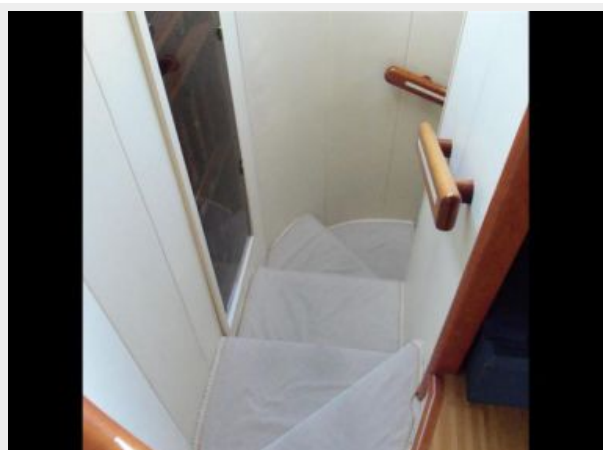


Dinette



Companionway Electric Panel

Companionway Steps



Companionway



Companionway Laundry



Day Head



Master Looking Aft



Master Looking to Port



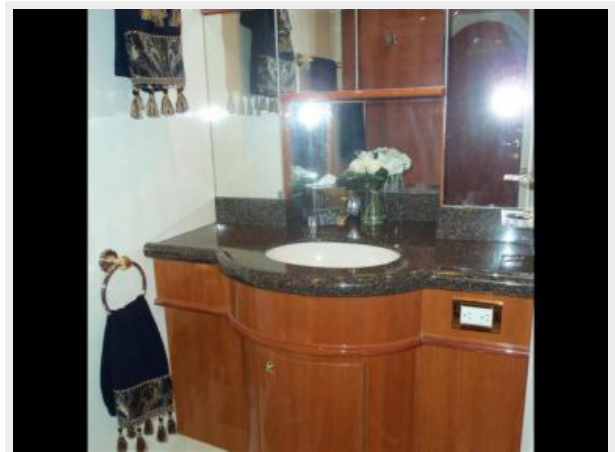
Master Looking to Starboard



Master Looking Forward



Master Head



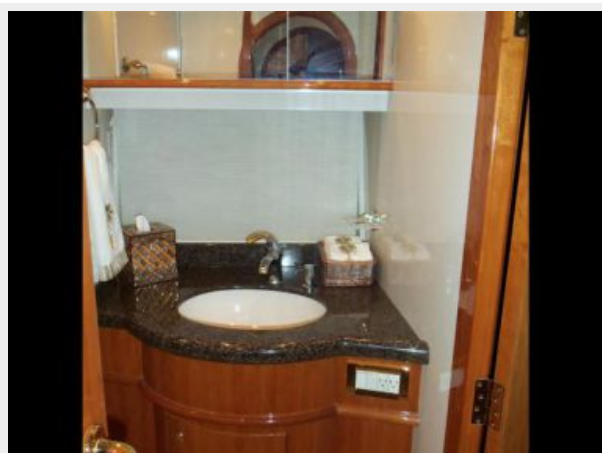
Guest Cabin Looking Aft



Guest Cabin Looking Forward



Guest Head



Guest Shower



VIP



VIP



VIP to Starboard



VIP to Port



VIP Looking Aft



Foredeck



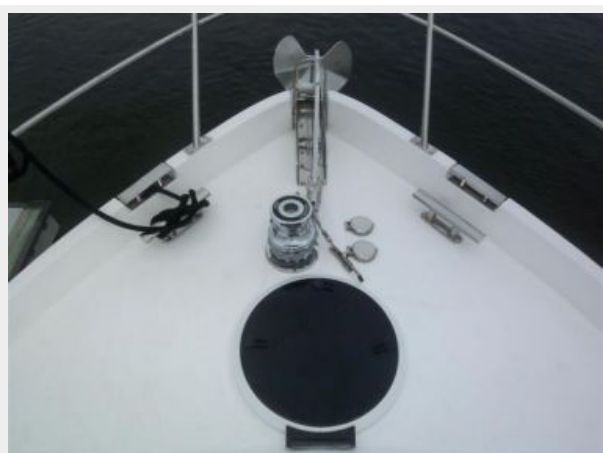
Foredeck



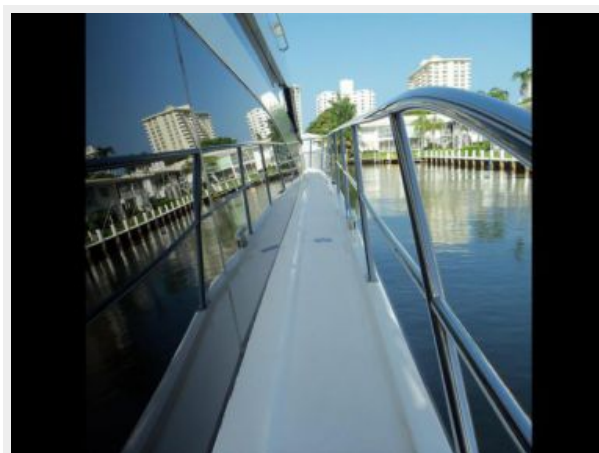
Foredeck



Anchor Detail



Side Deck



Aft Deck



Aft Deck



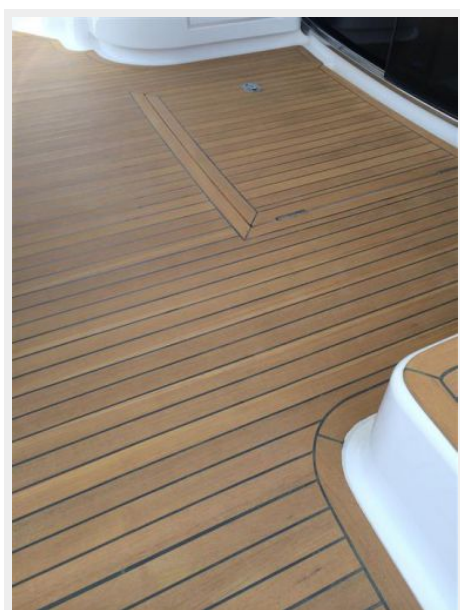
BBQ



Flybridge Steps



Freshly Refinished Teak



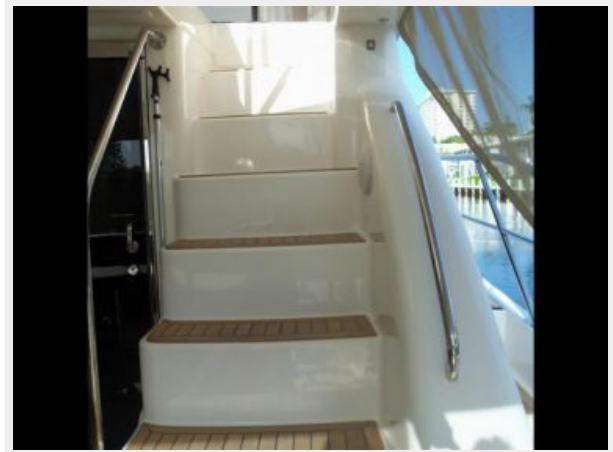
Crew to Port



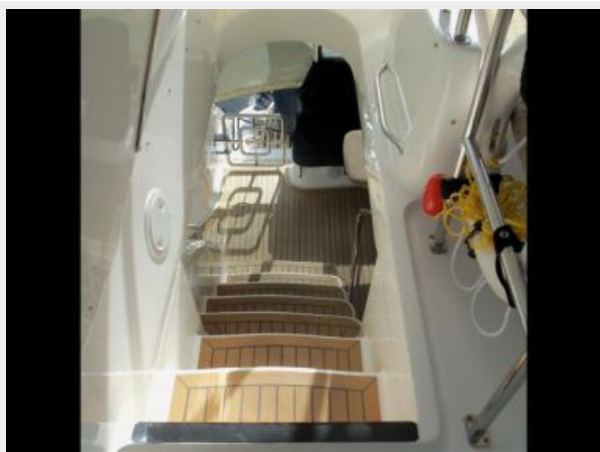
Crew to Starboard



Flybridge Entrance Steps



EZ Flybridge Steps



Flybridge Looking Forward



Flybridge Looking Forward



Helm Detail



Helm



Helm



Portside Helm Area



Flybridge Bar



Brand New FB Cushions



Sun Lounge



Sun Lounge



Hardtop Equipment



Port Engine



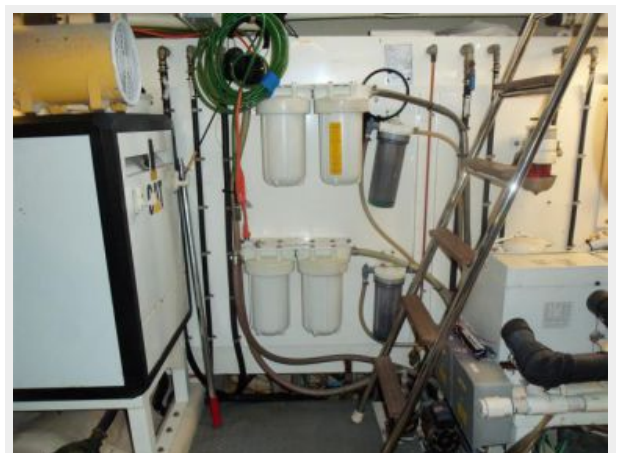
Starboard Engine



Engine Room Forward



Engine Room Aft



Chilled Water AC



CAT Generator



Water Makers



Charger System



Freshly Awl Grippped Engine Room Bilges



Alternate Profile



At Sea



КОНТАКТЫ

Андрей Шестаков (Andrey Shestakov) – ведущий яхтенный брокер отдела продаж яхт и судов компании Shestakov Yacht Sales Inc. Официальный представитель Shestakov Yacht Sales Inc. для русскоговорящих клиентов в центральном офисе компании в Майами/Форт Лодердейл/Флорида/США.

Контактная информация

Email: andrey@shestakovyachtsales.com

Web: shestakovyachtsales.com

Телефоны

Краснодарский край: **+7(918)465-66-44**

США, Майами, Флорида: **+1(954)274-4435**

Время работы

Понедельник – Суббота: **9:00 - 21:00**
EDT

Воскресенье: **Закрито**

Адрес



Harbour Towne Marina, 850 NE 3rd St,
STE 213, Dania, FL 33004