

## LUCKY ONE — SEA RAY



**Судостроитель:** SEA RAY

**Год постройки:** 2003

**Модель:** Моторная яхта

**Цена:** **ЦЕНА ЯХТЫ ПО ЗАПРОСУ**

**Местонахождение:** United States

**Длина общая:** 50' 5" (15.37m)

**Ширина:** 15' 3" (4.65m)

**Макс. осадка:** 3' 11" (1.19m)

**Крейс. скорость:** 22 Kts. (25 MPH)

**Макс. скорость:** 28 Kts. (32 MPH)

Купить **Lucky One — SEA RAY** а также выбрать подходящую вам яхту из нашего каталога яхт вам поможет опытный яхтенный брокер Андрей Шестаков. На сегодняшний день компания **Shestakov Yacht Sales Inc.** имеет большое количество яхт в собственном списке продаж, а также тесно сотрудничает со всеми крупными яхтенными производителями по всему миру.

Для того чтобы купить яхту **Lucky One — SEA RAY** а также проконсультироваться по любому вопросу связанному с покупкой, продажей, чартером яхт позвоните по телефону **+7(918)465-66-44**.

# ОГЛАВЛЕНИЕ

ОГЛАВЛЕНИЕ	2
ХАРАКТЕРИСТИКИ	5
Обзор	5
Основная информация	5
Размеры	5
Скорость, вместимость и масса	6
Размещение	6
Корпус и палуба	6
Информация о двигателе	6
ПОДРОБНОЕ ОПИСАНИЕ	7
Layout	7
Electronics & Navigation	8
Electrical System	8
Deck, Hull & Construction	8
Engine Room & Mechanical	9
Additional Salespersons Remarks	9
Disclaimer	9
Исключения	10
Отказ от ответственности	10
ФОТОГРАФИИ	11
Salon	11
Master Stateroom	11
Guest Stateroom	11
At Dock Starboard	11
At Dock Transom	12
At Dock Port	12
Aft Deck	12
Aft Deck with Wetbar	12

Helm Area	12
Helm	12
22 Knots @ 1880 RPM....only 72% Load	13
Salon Looking Aft	13
Salon Starboard	13
Salon Port	13
Salon Entertainment Center with Upgraded LCD TV & DVD Plaayer	13
Galley	13
Upgraded Refrigerator	14
Galley 2	14
In Cabinet Microwave	14
Dinette	14
Bow Stateroom	15
Bow Stateroom 2	15
Bow Stateroom 3	15
Guest Head Shower	15
Guest Head	16
Third Statroom as Twins	16
Third Stateroom as Queen	16
Master Stateroom 2	16
Master Stateroom 3	17
Master Stateroom 4	17
Master Vanity	17
Master Head with Large Split Shower	17
Master Head	18
Master Shower with Seat	18
Utility Room with Washer & Dryer	18
Large Under Berth Storage in Master	18
Utility Room with Spare Props & Storage	19

---

Fresh Manifold in Utility Room	19
Upgraded Battery Charger in Utility Room	19
Engine Room	19
Starboard Engine	19
Port Engine	19
Engine Racors	20
Batteries-Three New AGM Batteries	20
Oil Exchange System	20
Generator	20
Single Level & Wide Side Decks	21
Bow	21
Side Deck 2	21
Windlass & Search Light	21
Aft Wing Doors	22
Profile 2	22
<b>КОНТАКТЫ</b>	<b>23</b>
Контактная информация	23
Телефоны	23
Время работы	23
Адрес	23

# ХАРАКТЕРИСТИКИ

## Обзор

### **Another Price Drop As The Owner is Moving and is Ready to Sell! Offers Encouraged!**

"Lucky One" is a beautiful example of the Sea Ray 48 Motoryacht that has seen low hours and the best of care with predominant use on the Chesapeake Bay. I sold this boat to the current and previous owner and know this boat has benefited from knowledgeable and attentive owners. The design on the 480 Motoryacht affords all the interior luxury found in aft cabin yachts but with much easier sightlines (especially aft) and wide side decks for safe access to the bow for line handling or use of the sun pad. The helm location also keeps the captain on the same level and in the mix with their guests all in the comfort of an air conditioned enclosed bridge deck.

Unlike many other competitors of this yacht, Sea Ray put plenty of power in this model and the boat can effortlessly cruise at anywhere from 18-23 knots in the 1750rpm-2050rpm. The QSM-11's provide plenty of torque when docking as well, and coupled with the bow thruster and great visibility this is one of the most agile boats when it comes to maneuvering dockside.

"Lucky One" is well optioned with upgraded Garmin 5212 Touchscreen 12" GPS/Plotter, TracVision SAT TV and new digital terrestrial antenna along with bridge A/C, bow thruster, cherry wood interior, and more! I have had the personal pleasure of running this boat in the past and have known both owners well. A great boat and a must see!

## Основная информация

**Тип судна:** Моторная яхта

**Подкатегория:** Sedan Cruiser

**Модельный год:** 2003

**Год постройки:** 2003

**Страна:** United States

## Размеры

**Длина общая:** 50' 5" (15.37m)

**Ширина:** 15' 3" (4.65m)

**Макс. осадка:** 3' 11" (1.19m)

## Скорость, вместимость и масса

---

**Крейс. скорость:** 22 Kts. (25 MPH)

**Макс. скорость:** 28 Kts. (32 MPH)

**Вместимость воды:** 120 Gallons

**Вместимость сточного бака:** 60 Gallons

**Объем топливного бака:** 500 Gallons

## Размещение

---

**Всего кают:** 3

**Всего коек:** 4

**Спальные места:** 6

**Всего ком. состава:** 2

## Корпус и палуба

---

**Материал корпуса:** Fiberglass

## Информация о двигателе

---

**Двигатели:** 2

**Производитель:** Cummins

**Модель:** QSM 11

**Тип двигателя:** Inboard

**Тип топлива:** Diesel

# ПОДРОБНОЕ ОПИСАНИЕ

## Layout

"Lucky One" has a spacious 3 stateroom layout with two very gracious sized heads, the master featuring a split private head and shower with a vanity in between. The entire boat features impressive high gloss cabinetry, cedar lined lockers, Corian counters and rich ultra leather settees and fine soft goods throughout. The VIP stateroom is forward and has a queen sized centerline island berth and private access to the guest head. The guest stateroom is forward and to port and has a large hanging locker and two twin berths that with a filler can become a third queen. The Master stateroom is aft affording it privacy from the guests. There is an abundance of drawer space as well as hanging lockers, plenty of natural light and a separate shower and head. The salon is very open and bright with large side windows with silhouette style day/night blinds. There is even a window facing forward which adds to the abundance of light in the salon and companionway forward. The companionway stairs leading forward also lift to open to a utility room with a washer/dryer, dry storage space, room for the spare propellers and easy access to the battery chargers, freshwater manifolds, etc. On deck the one level helm and aft deck area is perfect for entertaining with a wet bar and refrigerator and icemaker. The entire bridge deck is air conditioned and has wing doors that lead to wide side decks. Access forward is safe with hip high side and bow rails and there is a large covered sun pad for catching rays and relaxing. The side rails have gates on both port and starboard sides for easy boarding from fixed piers and the aft deck has nice molded in stairs leading to a large swim platform for easy boarding from floating docks or taking part in water sports.

- Corian Countertops
- Molded In Galley Sink with Cutting Board Cover
- Ceramic Electric Stove
- Upgraded Vitrefrigo Refrigerator and Freezer
- Microwave
- U-Line Refrigerator with Ice Maker on Aft Deck
- Beam Central Vac System
- Splendide 2000 Washer and Dryer
- Freshwater System with Hot and Cold Pressurize Water
- Freshwater Block Manifold with Color Coded Hot and Cold Plumbing Throughout
- SeaLand Vacuflush Heads and Holding Tank with Deck Pumpout
- Five Cruise Air Reverse Cycle Air Conditioning and Heat Systems (All AC's recently flushed and new AC water pumps in 2013)
- Air Conditioned Helm and Aft Deck
- SMXir Digital Controls for AC/Heat
- Carpet Runners Available, Throw Rugs Convey
- Hidden Ottoman with Storage
- Amtico Style Wood Flooring in Galley
- Upgraded LCD TV's in Salon and Master with DVD Players

- Upgraded LED lighting in Master

---

## Electronics & Navigation

---

- Cummins Digital Engine Monitors
- Sea Ray Systems Monitors
- Garmin 5212 Touchscreen 12" Color GPS/Chartplotter
- Raymarine RL80 72NM Radar with Open Array Radar and Chartplotter
- Raymarine ST 7001+ Autopilot
- Raymarine VHF Radio
- Raymarine External VHF Speaker
- ACR Remote Spotlight
- Compass
- Windlass Control
- Remote Stereo/CD Control
- Clarion AM/FM/CD with CD Changer and marine speakers and sub woofer on bridge deck
- Clarion AM/FM/CD Stereo in Salon
- KVH Tracvision 4 SAT TV
- RCA Direct TV Receiver
- Glowmax Digital Terrestrial TV Antenna (2014)
- VHF Whip Antenna

---

## Electrical System

---

- Onan 13.5kw e-QD Generator w/ touch start and Sound Shield (878 Hours)
- 50amp Shorepower Service
- 50amp Shorepower Cord with Glendinning Cablemaster
- (2) 8D Batteries (AGM, replaced in 2013)
- (2) Group 27 Batteries
- C-Power ISO Transformer
- New Mastervolt 12/40-3 Power Battery Charger (2013)
- Professional Mariner Pro-Matic Battery Charger for Bow Thruster Battery

---

## Deck, Hull & Construction

---

- Onan 13.5kw e-QD Generator w/ touch start and Sound Shield (878 Hours)
- 50amp Shorepower Service
- 50amp Shorepower Cord with Glendinning Cablemaster
- (2) 8D Batteries (AGM, replaced in 2013)
- (2) Group 27 Batteries



- C-Power ISO Transformer
- New Mastervolt 12/40-3 Power Battery Charger (2013)
- Professional Mariner Pro-Matic Battery Charger for Bow Thruster Battery

---

## Engine Room & Mechanical

---

Shortly before the current owner purchased the boat in 2010 an authorized Cummins mechanic had done a major preventative maintenance service removing the heat exchangers, aftercoolers, raw water pumps, belts and turbo housings. The aftercoolers and heat exchangers were disassembled, acid cleaned, degreased and resealed. Raw water pumps were cleaned and inspected and impellers were changed and they also cleaned and inspected the turbo housings. All gaskets were replaced. A total of over \$18,000 was spent in for this PM service ensuring years of unproblematic future use.

- Dripless Shaft Seals
- Vetus Bow Thruster
- Seafire Halon Automatic Fire Extinguishing System
- Freshwater Washdown Spigot in Engine Room
- Oil Change Pump
- 578 Hours on the Cummins QSM-11's as of 6/23/14

---

## Additional Salespersons Remarks

---

This one has all the bells and whistles and then some and is one of the nicest kept boats available. Factory options included remote start for the generator, bridge A/C and Heat, Bow Thruster, Canvas Enclosure with separate screen panels, generator sound shield, spare propellers, aft deck refrigerator/icemaker combo, aft bench seat with storage, sun pad, cockpit table, central vac, washer and dryer, etc., etc.

---

## Disclaimer

---

While we attempt to display current and accurate data, this listing may not reflect the most recent transactions or may contain occasional data entry errors. Selling agent makes no warranties, express or implied, regarding the content or availability of the products described herein. All inventory listed is subject to availability and prior sale. Please consult selling agent for details. Prices are quoted for the USA only and may not include transportation, taxes, or other applicable

charges. Photographs may be representative only and may vary somewhat from the actual items offered for sale. We will not be responsible for inaccurate data obtained from our site. Please check with your local dealer to ensure that you have the latest information available. Information on this web site could include technical inaccuracies or typographical errors. Changes may be periodically made to the information or the products herein. Questions or comments regarding these policies may be directed to website hosting agent.

## **Исключения**

---

При продаже яхты исключаются личные вещи владельца.

## **Отказ от ответственности**

---

Компания предоставляет описание судна или яхты добросовестно, но не может гарантировать точность этой информации, а также не ручается за техническое состояние. Покупатель должен проинструктировать своих агентов или оценщиков исследовать представленную информацию более подробно, по собственному желанию. Продажа судна или яхты, изменение цены или снятие с продажи будет происходить без предварительного уведомления.

# ФОТОГРАФИИ

**Salon**



**Master Stateroom**



**Guest Stateroom**



**At Dock Starboard**



**At Dock Transom**



**At Dock Port**



**Aft Deck**



**Aft Deck with Wetbar**



**Helm Area**



**Helm**



**22 Knots @ 1880 RPM...only 72% Load**



**Salon Looking Aft**



**Salon Starboard**



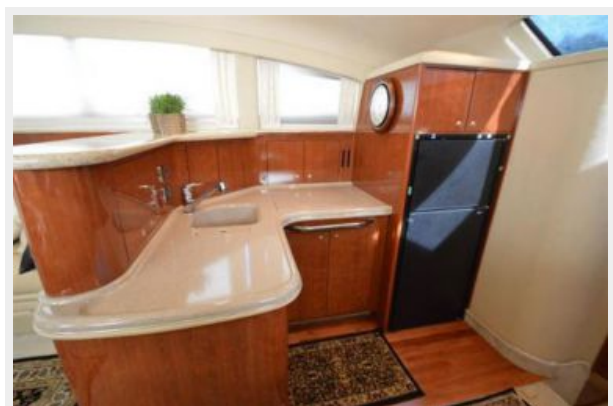
**Salon Port**



**Salon Entertainment Center with Upgraded  
LCD TV & DVD Player**



**Galley**



**Galley 2**



**Upgraded Refrigerator**



**In Cabinet Microwave**



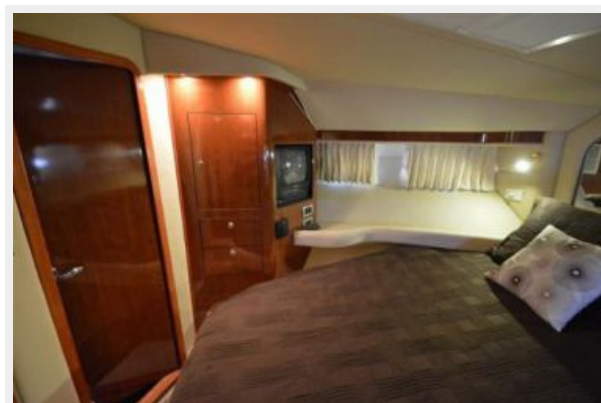
**Dinette**



**Bow Stateroom**



**Bow Stateroom 2**



**Bow Stateroom 3**



**Guest Head Shower**



**Guest Head**



**Third Statroom as Twins**



**Third Stateroom as Queen**



**Master Stateroom 2**





**Master Stateroom 3**



**Master Stateroom 4**



**Master Vanity**



**Master Head with Large Split Shower**



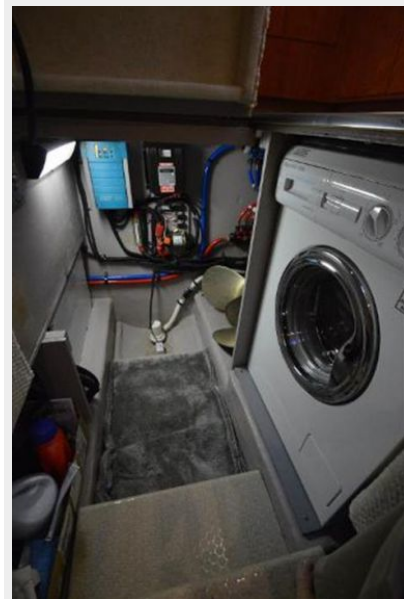
**Master Head**



**Master Shower with Seat**



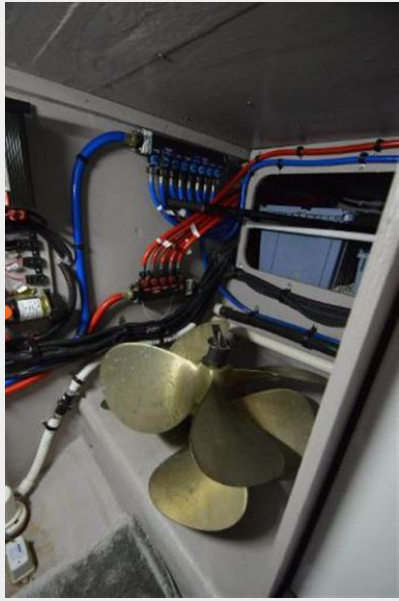
**Utility Room with Washer & Dryer**



**Large Under Berth Storage in Master**



**Utility Room with Spare Props & Storage**



**Fresh Manifold in Utility Room**



**Upgraded Battery Charger in Utility Room**



**Engine Room**



**Starboard Engine**



**Port Engine**



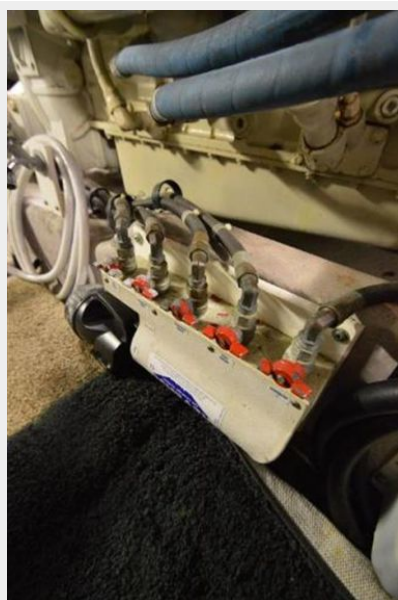
### Engine Racors



### Batteries-Three New AGM Batteries



### Oil Exchange System



### Generator



## Single Level & Wide Side Decks

### Bow



### Side Deck 2

### Windlass & Search Light



### Aft Wing Doors



### Profile 2



# КОНТАКТЫ

---

Андрей Шестаков (Andrey Shestakov) – ведущий яхтенный брокер отдела продаж яхт и судов компании Shestakov Yacht Sales Inc. Официальный представитель Shestakov Yacht Sales Inc. для русскоговорящих клиентов в центральном офисе компании в Майами/Форт Лодердейл/Флорида/США.

## Контактная информация

---

Email: [andrey@shestakovyachtsales.com](mailto:andrey@shestakovyachtsales.com)

Web: [shestakovyachtsales.com](http://shestakovyachtsales.com)

## Телефоны

---

Краснодарский край: **+7(918)465-66-44**

США, Майами, Флорида: **+1(954)274-4435**

## Время работы

---

Понедельник – Суббота: **9:00 - 21:00**  
EDT

Воскресенье: **Закрето**

## Адрес

---



Harbour Towne Marina, 850 NE 3rd St,  
STE 213, Dania, FL 33004