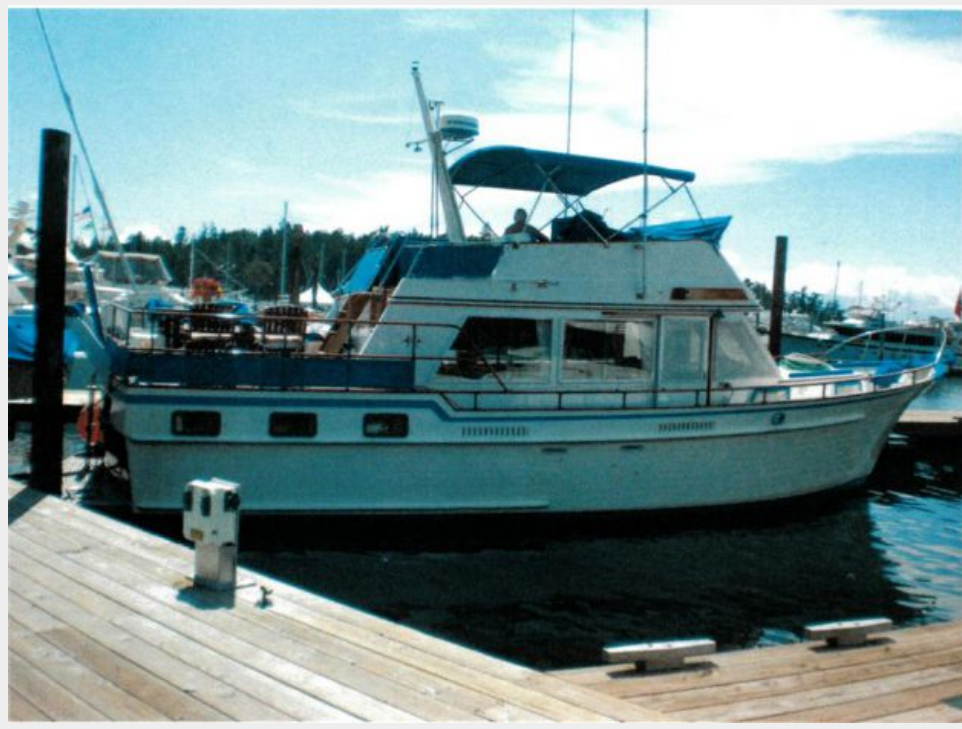


CORTAN SHIP — ISLAND GYPSY



Builder: ISLAND GYPSY

LOA: 44' 0" (13.41m)

Year Built: 1981

Model: Motor Yacht

Price: PRICE ON APPLICATION

Location: United States

Our experienced yacht broker, Andrey Shestakov, will help you choose and buy a yacht that best suits your needs **Cortan Ship — ISLAND GYPSY** from our catalogue. Presently, at Shestakov Yacht Sales Inc., we have a wide variety of yachts available on our sale's list. We also work in close contact with all the big yacht manufacturers from all over the world.

If you would like to buy a yacht **Cortan Ship — ISLAND GYPSY** or would like help answering any questions concerning purchasing, selling or chartering a yacht, please call **+1(954)274-4435**

TABLE OF CONTENTS

TABLE OF CONTENTS	2
SPECIFICATIONS	3
Overview	3
Basic Information	3
Dimensions	3
Accommodations	3
Hull and Deck Information	3
Engine Information	3
DETAILED INFORMATION	4
Accommodations	4
Engine and Mechanical	4
Appliances	4
Hull and Deck	5
Interior Description	5
Electronics	5
Shipwright/Other	6
Exclusions	6
Disclaimer	6
PHOTOS	7
CONTACTS	9
Contact details	9
Telephones	9
Office hours	9
Address	9

SPECIFICATIONS

Overview

The Island Gypsy 44 flush Aft deck is heavily built long range cruiser with a traditional trawler profile-style and an unusual and appealing galley up interior. The 44's built on a solid fiberglass semi-displacement hull with fairly high free board, hard chines, and a prop-protection gull length keel. Inside, the three stateroom floor plan is arranged with two small staterooms forward of the floor plan is arranged with two staterooms forward of the salon and a spacious master stateroom aft.

Basic Information

Category: Motor Yacht

Model Year: 1981

Year Built: 1981

Country: United States

Dimensions

LOA: 44' 0" (13.41m)

Accommodations

Total Cabins: 3

Hull and Deck Information

Hull Material: Fiberglass

Engine Information

Manufacturer: Ford Lehman

DETAILED INFORMATION

Accommodations

Cortan-Ship exhibits the classic trawler profile with a spacious and appealing galley-up interior. She is built on solid fiberglass, semi-displacement hull with hard chines, lots of free board, and a full-length prop-protecting keel. The interior arrangement includes two staterooms forward and a huge, full-beam master stateroom aft. The salon is spacious and both heads include stall showers. Finishing superb with beautiful Burmese teak and storage is plentiful.

Three staterooms with the full beam master aft. A center line queen size berth in the master has an incredible amount of storage to both port and starboard. A clever dressing table with vanity is included to starboard. Master head includes a large stall shower. Main salon has a galley up with dinette forward on port, and lower helm station on starboard. Large opening windows within the salon provide a great feeling of openness and space. Forward are two guest staterooms and guest head. Guest head includes a separate shower area. Guest stateroom forward includes a v berth and tons of storage. Third stateroom includes single bunk.

Engine and Mechanical

- Fuel tanks replaced aluminum tanks
- Welded polyethylene water tanks
- Welded polyethylene holding tanks
- Hydraulic steering cylinder
- 5.5kw crank generator
- MarineAir Turbo 16,000 btu AC unit in main salon
- MarineAir Turbo 12,000 btu AC unit in Master
- Three (3) 2000 GPH bilge pumps
- Emergency Whale hand pump
- AC pump and motor
- Generator muffler

Appliances

- Sony stereo system-extended to whole boat
- Hot water heater
- U line ice maker
- Two (2) Electric Heads
- 8 cubic foot freezer on bridge

Hull and Deck

- All through-hulls (8 ball valve type)
- 55# Anchor
- Anchor chain- 300 feet
- Stainless steel air horns
- Custom shade screens and storm covers for all windows
- Helm chairs on fly bridge
- Teak decking on aft deck, side decks, foredeck and fly bridge
- Foam cushions- all new 2 years ago
- Aft windows all replaced with bronze port lights
- Teak swim platform and back
- Electric davit system
- 13' Boston whaler- w/30hp merc electric start
- 8 cubic foot freezer on bridge

Interior Description

- Carbon water filters
- Foam cushions throughout- Renewed 2 years ago and covers
- Island Queen aft stateroom
- Two electric heads
- 3kw outback inverter
- Espar diesel furnace

Electronics

- Garmin 3010 Network
- Garmin Sonar
- Garmin Transducer
- XM satellite Radio and Weather Capable
- Raymarine ST-60 depth finder
- Re-manufactured Furuno NavTex weather printer
- Simrad Autopilot
- Lower helm tachometers (2)
- Smart charging and inverter system
- Exterior speaker for loudhailer
- Bow thruster
- 2 VHF radios
- Hailer RayMarine 400

Shipwright/Other

- All teak decks redone
- All windows re-bedded including tracks and seals
- Repainted with Awlgrip Awlcraft 2000 white
- 7.5 main generator set w/ sound cover
- Fiberglass bottom peeled with 6 epoxy (8) coats Interlux 2000
- Repacked rudder shaft seals

Exclusions

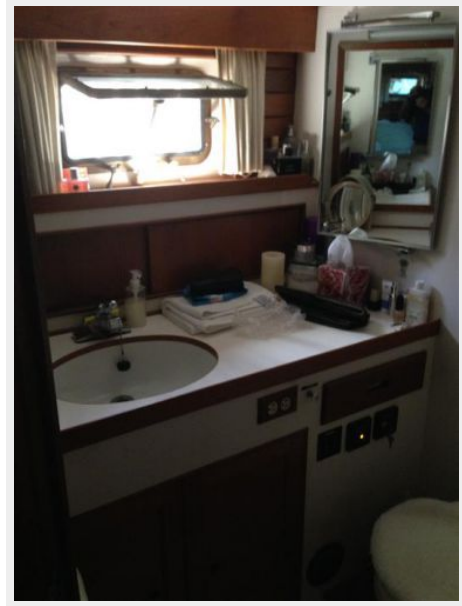
Owner's personal belongings.

Disclaimer

The Company offers the details of this vessel or yacht in good faith but cannot guarantee or warrant the accuracy of this information nor warrant the condition of the vessel. A buyer should instruct his representatives, agents, or his surveyors, to investigate such details as the buyer desires validated. This vessel or yacht is offered subject to prior sale, price change, or withdrawal without notice.

PHOTOS





CONTACTS

Andrey Shestakov, leading yacht broker of the sales department of Shestakov Yacht Sales Inc. Shestakov Yacht Sales Inc., the official representative of the Miami/Fort Lauderdale FL headquarters.

Contact details

Email: andrey@shestakovyachtsales.com

Web: shestakovyachtsales.com/en/

Telephones

USA: +1(954)274-4435

Office hours

Monday – Saturday: **9:00 - 21:00** EDT

Sunday: **closed**

Address



Harbour Towne Marina, 850 NE 3rd St,
STE 213, Dania, FL 33004