

MISS MAGGIE — NORDLUND



Судостроитель: NORDLUND

Год постройки: 1988

Модель: Моторная яхта

Цена: ЦЕНА ЯХТЫ ПО ЗАПРОСУ

Местонахождение: United States

Длина общая: 61' 0" (18.59m)

Ширина: 17' 0" (5.18m)

Мин. осадка: 4' 0" (1.22m)

Купить **Miss Maggie — NORDLUND** а также выбрать подходящую вам яхту из нашего каталога яхт вам поможет опытный яхтенный брокер Андрей Шестаков. На сегодняшний день компания **Shestakov Yacht Sales Inc.** имеет большое количество яхт в собственном списке продаж, а также тесно сотрудничает со всеми крупными яхтенными производителями по всему миру.

Для того чтобы купить яхту **Miss Maggie — NORDLUND** а также проконсультироваться по любому вопросу связанному с покупкой, продажей, чартером яхт позвоните по телефону **+7(918)465-66-44**.

ОГЛАВЛЕНИЕ

ОГЛАВЛЕНИЕ	2
ХАРАКТЕРИСТИКИ	5
Основная информация	5
Размеры	5
Скорость, вместимость и масса	5
Размещение	5
Корпус и палуба	5
Информация о двигателе	6
ПОДРОБНОЕ ОПИСАНИЕ	7
1988 61 Nordlund	7
Исключения	14
Отказ от ответственности	14
ФОТОГРАФИИ	15
Salon	15
Salon	15
Salon	15
Salon	15
Salon	15
Galley	15
Galley	16
Galley	16
Dinette	16
Dinette	16
Master Stateroom	17
Master Stateroom	17
Master Stateroom	17
Master Stateroom	17
Master Stateroom	17

Master Head	17
Master Head	18
Forward Stateroom	18
Forward Stateroom	18
Forward Stateroom	18
Forward Stateroom	19
Guest Stateroom	19
Guest Stateroom	19
Guest Stateroom	19
Guest Head	20
Washer Dryer	20
Aft Deck	20
Aft Deck	20
Aft Deck	20
Aft Deck	20
Aft Deck	21
Aft Deck	21
Aft Deck	21
Bow	21
Bow	22
Bow	22
Bow	22
Engine Room	22
Engine Room	22
Engine Room	22
Engine Room	23
Engine Room	23
Flybridge	23
Flybridge	23

Flybridge	23
Flybridge	23
Flybridge	24
Pilothouse	24
Pilothouse	24
Pilothouse	24
Bow	24
Pilothouse	24
Stern	25
Stern	25
КОНТАКТЫ	26
Контактная информация	26
Телефоны	26
Время работы	26
Адрес	26

ХАРАКТЕРИСТИКИ

Основная информация

Тип судна: Моторная яхта

Подкатегория: Pilothouse

Модельный год: 1988

Год постройки: 1988

Страна: United States

Открытая палуба мостика: Да

Кубрик: Да

Размеры

Длина общая: 61' 0" (18.59m)

Ширина: 17' 0" (5.18m)

Мин. осадка: 4' 0" (1.22m)

Скорость, вместимость и масса

Водоизмещение: 98000 Pounds

Вместимость воды: 600 Gallons

Объем топливного бака: 1400 Gallons

Размещение

Всего кают: 3

Всего коек: 4

Спальные места: 6

Всего ком. состава: 2

Корпус и палуба

Материал корпуса: Fiberglass

Информация о двигателе

Двигатели: 2

Производитель: Detroit Diesel

Модель: 6V92TA

Тип двигателя: Inboard

Тип топлива: Diesel

ПОДРОБНОЕ ОПИСАНИЕ

1988 61 Nordlund

Miss Maggie is a great buying opportunity in today's marketplace. The layout of this 61 foot Raised Pilothouse provides the open feeling and roomy accommodations that are not often found on cruising boats of this size. The Salon and Galley are very large and functional. The headroom in the cabins and heads is unmatched.

The walk in stand up engine room accessed from either the Master Stateroom or aft deck is also not found in boats of this size. Miss Maggie's displacement is 98,000 lbs. This heavy boat can withstand the elements and was designed to cruise the challenging and often rough waters of the Pacific Northwest. The bow and stern thrusters allow for easy handling of this heavy boat. Miss Maggie has had impeccable care and love and it shows throughout. The electronics have been recently upgraded as have the Galley, Salon, and Master Stateroom. This yacht looks and feels like a much newer vessel.

Built by Nordland Yachts in Tacoma, Washington. Miss Maggie is one of the rare opportunities to own a quality raised pilothouse motor yacht built in the USA with American wiring and systems. Anyone considering a Hatteras, Ocean Alexander, Offshore, or Tollycraft should not miss the opportunity to preview this yacht. It is a top quality diamond in the rough.

Salon

Entertainment center forward in custom teak cabinetry

Television antenna w/switch for port or starboard cable hookup

Sony flat screen TV

Sony DVD player

Sony DSS unit w/antenna

Cockpit, Pilothouse, Bridge and Salon stereo control for speakers

Television antenna w/switch for port or starboard cable hookup

L-shaped sofa with storage

Two barrel chairs

Ottoman with storage

Wood and upholstered valances

Satin finish teak walls and cabinetry

Teak-framed art glass door at entry from cockpit

Dimmer switch for lighting over dinette

U-Line ice maker (2013)

New carpet, 2013

Galley/Laundry

U-shaped galley to starboard with country kitchen feeling

Corian countertops

Dinette to port (forward of the dinette is the staircase leading to the staterooms and laundry below)

Grunert cold plate refrigerator

Force 10 propane oven with 3 burners

Microwave oven

Water heater

Large double Kohler sink with in-sink eradicator

Seagull drinking water tap

Braun trash compactor

New ASKO washer/dryer 2013

Graco Paragon pressure fresh water system

Master Stateroom - The master suite is full-beam amidship

Queen berth

Newly upholstered headboard and curtains (2013)

13" television w/VCR

Double walk-in cedar-lined wardrobe closet with mirrored doors

Dresser & Drawers

Huge stall shower

Lockers to starboard

Ensuite head with shower, vanity, Vacuflush head

New carpet 2013

Satin teak finish

There is walk-in access from the master to the stand-up engine room

VIP Stateroom – Forward

Island queen berth

Separate air conditioning controls

Plenty of storage space

Dresser and mirror

Cedar-lined wardrobe closet

The guest head is shared by the VIP and guest staterooms

13" television w/VCR

Lockers and drawers on both sides of queen berth

Port aft is door to guest head

New carpet, 2013

Guest Stateroom

Upper/lower twin berths in an L-shape

Cedar-lined closet

2 Twin berths

Dresser and mirror

Dyson cordless vacuum mounted in closet (2012)

Lower Foyer

Cedar-lined closet

Asko stackable washer and dryer (2013)

Two storage lockers

Pilothouse

SIMRAD autopilot with remote

Garmin 48-mile digital radar

Icom SSB

New Icom VHF radio, pilothouse and flybridge

Garmin 8012 chart plotter

Garmin 2012 chart plotter

B & G depth indicator

Camera mounted on flybridge looking aft and visible from Garmin 8012

XM Satellite weather system

New Garmin wind and temp indicator

SEA 30 watt hailer

Rudder position indicator

Ritchie 6" compass

Intercom system connecting entire boat (galley, engine room, FB and all staterooms)

VDO pyrometer gauges (exhaust gas temp.)

Bow and stern thruster controls

Windlass control

Windshield washer and wipers

Jabsco/Rayline remote control search light w/2 stations

2 Pompanette helm chairs

Settee with table

Doors to each side allow access to the deck when docking

Stairs to the fly bridge are located to starboard

Flybridge

Bow and stern thruster controls

Garmin 6008 chart plotter

Icom VHF

VDO pyrometer gauges (exhaust gas temp.)

ACV 406 EPIRB

Avon 6 man life raft

RosKelley/Olson RC5 self-rotating hydraulic davit (2000 lb. lift capacity)

Bimini top (2013)

Two Stidd helm chairs (2013)

Compass

New flybridge cushions

Electronics and Navigation Equipment

SIMRAD autopilot with remote (new 2012)

Engine & generator sound and sight alarms

New Icom VHF radio, pilothouse and flybridge

Garmin 48-mile digital radar

Garmin 8012 chart plotter in pilothouse

Garmin 6008 chart plotter on flybridge

Garmin 2012 chart plotter

New Garmin wind and temp indicator

SEA 30 watt hailer

Rudder position indicator

Tank tender

Ritchie 6" compass

Datamarine Sea Temp gauge in cockpit

Intercom station

VDO pyrometer gauges (exhaust gas temp)

Bilge pump sound & sight alarm

Bow and stern thruster controls

Satellite weather system

New SSB radio

Mechanical and Engine Equipment

Detroit Diesels 6V92TA 850 hours SMOH

Cruisair 6 unit (3 staterooms, 1 pilothouse, 2 salon & galley) air conditioner

Oberdorfer rotary gear fuel management system

Wesmar hydraulic 25 hp bow thruster 12" with 2 control stations (rebuilt 2012)

Wesmar hydraulic 25 hp stern thruster with 2 control stations (new 2012)

Spare shaft

(2) Spare props

Naiad #252 stabilizers

(6) bilge pumps

Buell air compressor

Full set of tools and many spare parts

Oil change unit

Glendinning engine synchronizers

Racor fuel filters - mains and generators

Espar D7-L forced air diesel heater (2) each

Freeboy automatic Halon fire extinguisher system

Freshwater hose connection

Icemaker rebuilt 2013

Complete overhaul of heads and associated equipment/plumbing 2013

Murphy alarm gauges on mains and generator (oil and water)

Stainless steel fuel tank (4 each) with sight gauges and ball valve drain-offs - total gallonage

Trolling valves on both engines

Hynautic speed/shift control

Electrical System

(2) Northern Lights 12kW generators

All batteries replaced in 2012.

2500 watt inverter

Vessel electrical bonding system re-built, 2013

Deck and Hull

Complete walkaround and Portuguese bridge for safety at sea

All decks are covered in teak

Teak rail caps and bow pulpit refinished

Bow pulpit w/rails; teak deck

New plow anchor w/moveable shaft

105 lb CQR anchor (installed)

Spare anchors: 80 lb Manson, Fortress 55 and 25' chain on 300' anchor rode

Tender - Novurania MX430DL - 14' center console dinghy with 50hp, 4-cycle Yamaha w/ Garmin 6008 Chart plotter/ depth

Plath 4-11 horizontal windlass with 250' galvanized 7/16" chain

Bow seat cushions (2013)

Storage lockers in Portuguese bridge

Swim platform with built-in swim ladder allowing easy access to the water

Ideal 12 VDC capstan on aft deck

Jabsco/Rayline remote control searchlight with two stations

Underwater stern lights added 2012

All new dock lines

Lyons air horn

Cockpit

Large freezer

Small sink for clean-up

Teak bow pulpit and rail caps surround the yacht

Large Grunert cold-plate freezer in cockpit

Teak table and four teak chairs for cockpit

Saltwater & freshwater wash down system faucets - cockpit and bow

Исключения

При продаже яхты исключаются личные вещи владельца.

Отказ от ответственности

Компания предоставляет описание судна или яхты добросовестно, но не может гарантировать точность этой информации, а также не ручается за техническое состояние. Покупатель должен проинструктировать своих агентов или оценщиков исследовать представленную информацию более подробно, по собственному желанию. Продажа судна или яхты, изменение цены или снятие с продажи будет происходить без предварительного уведомления.

ФОТОГРАФИИ

Salon



Salon



Salon



Salon



Salon



Galley



Galley



Galley



Dinette



Dinette



Master Stateroom



Master Stateroom



Master Stateroom



Master Stateroom



Master Stateroom



Master Head



Master Head



Forward Stateroom



Forward Stateroom



Forward Stateroom



Forward Stateroom



Guest Stateroom



Guest Stateroom



Guest Stateroom



Guest Head



Washer Dryer



Aft Deck



Aft Deck



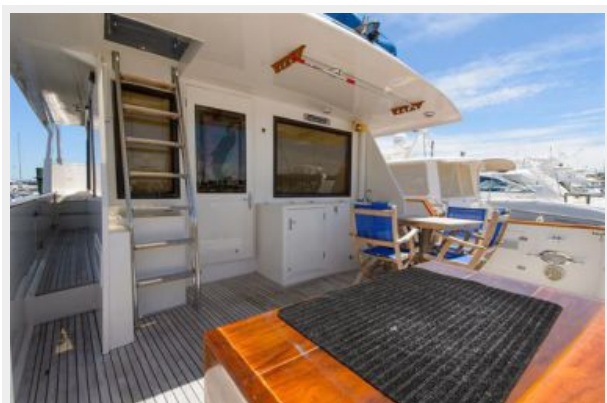
Aft Deck



Aft Deck



Aft Deck



Aft Deck



Aft Deck



Bow



Bow



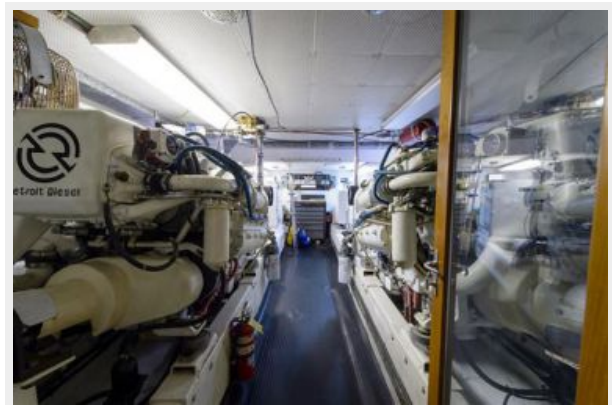
Bow



Bow



Engine Room



Engine Room



Engine Room



Engine Room



Engine Room



Flybridge



Flybridge



Flybridge



Flybridge



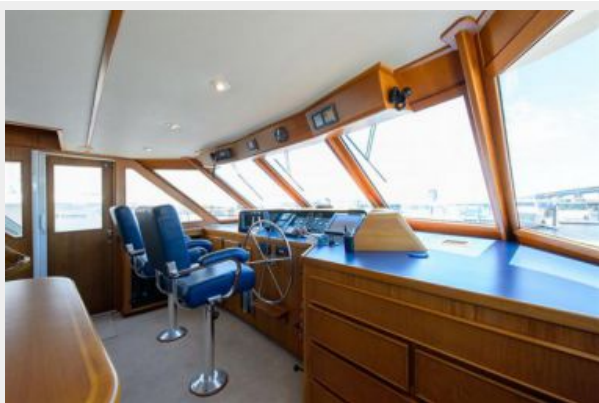
Flybridge



Pilothouse



Pilothouse



Pilothouse



Pilothouse



Bow



Stern



Stern



КОНТАКТЫ

Андрей Шестаков (Andrey Shestakov) – ведущий яхтенный брокер отдела продаж яхт и судов компании Shestakov Yacht Sales Inc. Официальный представитель Shestakov Yacht Sales Inc. для русскоговорящих клиентов в центральном офисе компании в Майами/Форт Лодердейл/Флорида/США.

Контактная информация

Email: andrey@shestakovyachtsales.com

Web: shestakovyachtsales.com

Телефоны

Краснодарский край: **+7(918)465-66-44**

США, Майами, Флорида: **+1(954)274-4435**

Время работы

Понедельник – Суббота: **9:00 - 21:00**
EDT

Воскресенье: **Закрето**

Адрес



Harbour Towne Marina, 850 NE 3rd St,
STE 213, Dania, FL 33004