

ASHLEE ANN — SILVERTON



Судостроитель: SILVERTON

Год постройки: 2005

Модель: Катер для спортивной рыбалки

Цена: ЦЕНА ЯХТЫ ПО ЗАПРОСУ

Местонахождение: United States

Длина общая: 50' 0" (15.24m)

Ширина: 16' 3" (4.95m)

Мин. осадка: 3' 5" (1.04m)

Купить Ashlee Ann — SILVERTON а также выбрать подходящую вам яхту из нашего каталога яхт вам поможет опытный яхтенный брокер Андрей Шестаков. На сегодняшний день компания Shestakov Yacht Sales Inc. имеет большое количество яхт в собственном списке продаж, а также тесно сотрудничает со всеми крупными яхтенными производителями по всему миру.

Для того чтобы купить яхту Ashlee Ann — SILVERTON а также проконсультироваться по любому вопросу связанному с покупкой, продажей, чартером яхт позвоните по телефону **+7(918)465-66-44**.

ОГЛАВЛЕНИЕ

ОГЛАВЛЕНИЕ	2
ХАРАКТЕРИСТИКИ	4
Обзор	4
Основная информация	4
Размеры	4
Скорость, вместимость и масса	5
Размещение	5
Корпус и палуба	5
Информация о двигателе	5
ПОДРОБНОЕ ОПИСАНИЕ	6
Vessel Walkthrough	6
Salon	6
Galley	7
Master Stateroom	7
VIP Stateroom	7
3RD Stateroom	7
Flybridge	8
Electronics	8
Electrical System	8
Mechanical Equipment	8
Fishing Equipment	9
Cockpit	9
Decks	10
Exclusions	10
Broker's Remarks	10
Исключения	10
Отказ от ответственности	10
ФОТОГРАФИИ	11

КОНТАКТЫ	23
Контактная информация	23
Телефоны	23
Время работы	23
Адрес	23

ХАРАКТЕРИСТИКИ

Обзор

Ashlee Ann is a 2006 Silverton 50 Convertible and is a prime example of how a yacht should be cared for.

Her exterior is blemish free and shines like new. Her versatile design allows her to be a great fishing boat with all the yachting amenities to make her the perfect cruiser as well. All systems are in above average to like new working condition and all maintenance is routine and documented.

WATER MAKER

BRIDGE AIR CONDITIONING

BOW THRUSTER

LOW HOURS

SPOTLESS INSIDE AND OUT

All offers will be presented to the seller

Основная информация

Тип судна: Катер для спортивной рыбалки

Подкатегория: Convertible

Модельный год: 2006

Год постройки: 2005

Страна: United States

Верх: Hardtop

Открытая палуба мостика: Да

Размеры

Длина общая: 50' 0" (15.24m)

Ширина: 16' 3" (4.95m)

Мин. осадка: 3' 5" (1.04m)

Трапы: 17' 11" (5.46m)

Длина привального бруса: 51' 7" (15.72m)

Скорость, вместимость и масса

Водоизмещение: 47600 Pounds

Чистый вес: 54 Pounds

Вместимость воды: 200 Gallons

Вместимость сточного бака: 80 Gallons

Объем топливного бака: 792 Gallons

Размещение

Всего кают: 3

Спальные места: 8

Всего ком. состава: 1

Корпус и палуба

Материал корпуса: Fiberglass

Информация о двигателе

Двигатели: 2

Производитель: Volvo Penta

Модель: D-12

Тип двигателя: Inboard

Тип топлива: Diesel

ПОДРОБНОЕ ОПИСАНИЕ

Vessel Walkthrough

Approaching the yacht you will notice beautiful lines along with a large area on the bow for lounging, an enclosed bridge area which is climate controlled or can be opened up completely and a very large cockpit for fishing or entertaining.

As you step aboard you will appreciate the swim platform and transom gate which takes you to the open cockpit. She is equipped with the FishPak option with all the essentials, including rod holders, outriggers, a live-well in the transom, rocket launchers above and a removable "Battle Station". There's also a bait station and storage for rods and tackle, plus a fishbox.

Wide molded-in steps take you to the bridge which has a hardtop, is climate controlled, refrigerator and seating for ten. She has great electronics, bow thruster and excellent visibility for docking.

Back down the stairs you will open the sliding door to the salon and be wowed once again by the abundance of high-end equipage on hand. The warm feel of cherry wood is the continuing theme throughout the cabin space.

Ample Salon Seating with an L-Shaped lounge with storage underneath and an incliner. A dining area is located forward and to starboard, opposite the galley. In the galley you'll find top of the line appliances, including separate Two (2) Sub-Zero refrigerator and freezer (one with icemaker) (new 2013) built in under the Corian countertop. There's a three burner electric range, a microwave/convection oven, and trash compactor.

Forward and down you have the midship master suite which is roomy and elegant with ensuite head with a separate shower stall. The guest suite, located in the bow, also has a queen-size berth and a generous amount of storage space. It has its own entrance to the second head, which also has an enclosed shower stall. The third stateroom is located to starboard, at the foot of the companionway stairs leading from the salon. It offers a pair of bunk-style berths and a large hanging locker, and it has comfortable stand-up room for dressing.

Salon

- CHERRY WOOD INTERIOR
- BOSE LIFESTYLE 18 SURROUND SOUND SYSTEM
- CUSTOM BLINDS/PLEATED SHADES
- FLEXSTEEL SOFA WITH STORAGE AND INCLINER
- ULTRA SUEDE ACCENTED HEADLINERS
- AIR CONDITIONING & HEAT
- CENTRAL VACUUM SYSTEM

- ENTERTAINMENT CENTER
- HIGH-GLOSS BURL AND CHERRY WOOD DINETTE TABLE
- LARGE WINDOW WITH NATURAL LIGHTING

Galley

- GENUINE CORIAN COUNTER TOPS
- AMTICO FLOORING
- FLAT TOP ELECTRIC STOVE
- EXHAUST FAN
- LARGE FLOOR STORAGE
- DUAL SINKS
- (2) SUB ZERO REFRIGERATOR & FREEZER, (1) WITH ICEMAKER (NEW 2013)
- MICROWAVE/CONVECTION OVEN
- TRASH COMPACTOR

Master Stateroom

- QUEEN SIZE ISLAND BED WITH STORAGE
- AIR CONDITIONING & HEAT
- OPENING PORT LIGHT
- FLAT SCREEN TV
- EN-SUITE HEAD WITH STALL SHOWER
- CEILING HATCH WITH SUNSHADE

VIP Stateroom

- QUEEN ISLAND BERTH
- OPENING HATCH WITH SCREEN & SUNSHADE
- BUILT-IN STORAGE
- HANGING LOCKER
- PRIVATE ACCESS TO GUEST HEAD
- FLAT SCREEN TV

3RD Stateroom

- BUNK STYLE BERTHS
- HANGING LOCKERS FOR STORAGE

Flybridge

- HARDTOP
- AC & HEAT (COOL HELM AIR)
- REFRIGERATOR
- FULL ELECTRONICS
- VOLVO DIGITAL GAUGE PACKAGE
- ANCHOR WINDLASS CONTROLS
- FULL ENCLOSURES (NEW 2011)
- WRAP AROUND SEATING
- ELECTRONICS SHIFTER & THROTTLES
- BOW THRUSTER CONTROLS
- NEW BRIDGE CARPET (NEW 2014)

Electronics

- RAYMARINE SMART PILOT AUTO PILOT WITH RUDDER INDICATOR
- GARMIN 5212 LARGE COLOR TOUCH SCREEN GPS/CHART PLOTTER/MAP /FISH FINDER
- RAYMARINE LARGE COLOR M1500
- RAYMARINE VHF RADIO
- ACR SPOTLIGHT
- RICHIE COMPASS
- 72 MILE OPEN ARRAY RADAR
- SATELLITE TELEVISION
- CLARION AM FM CD

Electrical System

- 12 & 24 VOLT DC ELECTRICAL SYSTEM
- 13KW KOHLER GENERATOR (1136 hrs. 6/22/14)
- GLENNDINNING ELECTRICAL 50 AMP SHORE POWER REEL SYSTEM
- BATTERY PARALLEL SWITCH
- 110/220 VOLT AC ELECTRICAL SYSTEM
- AUTOMATIC BATTERY CHARGER
- (4) 8D BATTERIES (NEW 2014)

Mechanical Equipment

- VOLVO BOW THRUSTER
- VACU-FLUSH HEAD SYSTEMS (2) HOLDING TANKS WITH OVERBOARD

DISCHARGE

- HELM/BRIDGE AIR CONDITIONING AND HEAT
- AUTOMATIC BILGE PUMPS
- ENGINE ROOM LIGHTS
- ENGINE ROOM FAN
- FUEL CROSS OVER VALVES
- FUEL PRIMING PUMPS
- HIGH WATER BILGE ALARM
- HYDRAULIC STEERING
- SEA RECOVERY AUTOMATIC WATER MAKER
- MULTI-ZONED AIR CONDITIONING AND HEAT SYSTEMS
- 300 GALLON FUEL BLADDER
- VOLVO SINGLE LEVER ELECTRONIC ENGINE CONTROLS
- ENGINE SYNCHRONIZER
- FIRE SUPPRESSION SYSTEM
- FUEL SHUT OFF VALVES
- OVERSIZED RACOR FUEL/WATER SEPARATOR
- DRIPLESS SHAFT LOGS
- OIL TRANSFER SYSTEM
- TRIM TABS
- CARBON MONOXIDE/FUEL/HIGH WATER DETECTORS

Fishing Equipment

- SILVERTON FISHING PACKAGE
- LARGE IN-DECK LIFTOUT FISHBOX W/MACERATOR
- BAIT PREP STATION WITH FRESHWATER SINK AND TACKLE DRAWERS
- (6) ROCKET LAUNCHERS
- TRANSOM DOOR
- LARGE TRANSOM LIVE WELL
- (7) GUNNEL ROD HOLDERS
- UNDERWATER LIGHTS
- DOUBLE SPREADER OUTRIGGERS

Cockpit

- COCKPIT MOUNTED ELECTRIC GRILL
- COCKPIT ICE MAKER
- DOCKSIDE CABLE TV CONNECTION
- DOCKSIDE TELEPHONE CONNECTION
- SWIM PLATFORM
- HOT COLD TRANSOM SHOWER

- WASH DOWN - SALT WATER
- COCKPIT ENGINE ROOM ACCESS
- DOCKSIDE FRESH WATER CONNECTION
- SWIM LADDER
- TRANSOM DOOR
- WASH DOWN-FRESH WATER
- (2) INDECK LIFTOUT STORAGE BOXES
- SINK

Decks

- BOW RAILS
- CUSTOM BOW CUSHION WITH EXTRA PILLOWS

Exclusions

Sellers personal items. see broker for full inventory list of exclusions

Broker's Remarks

Extremely well kept boat inside and out. A true must see.

Исключения

При продаже яхты исключаются личные вещи владельца.

Отказ от ответственности

Компания предоставляет описание судна или яхты добросовестно, но не может гарантировать точность этой информации, а также не ручается за техническое состояние. Покупатель должен проинструктировать своих агентов или оценщиков исследовать представленную информацию более подробно, по собственному желанию. Продажа судна или яхты, изменение цены или снятие с продажи будет происходить без предварительного уведомления.

ФОТОГРАФИИ

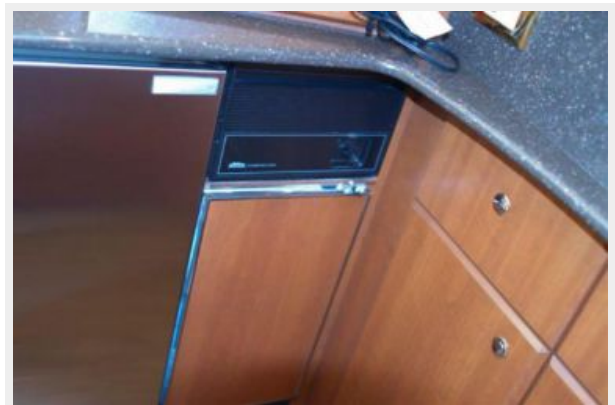
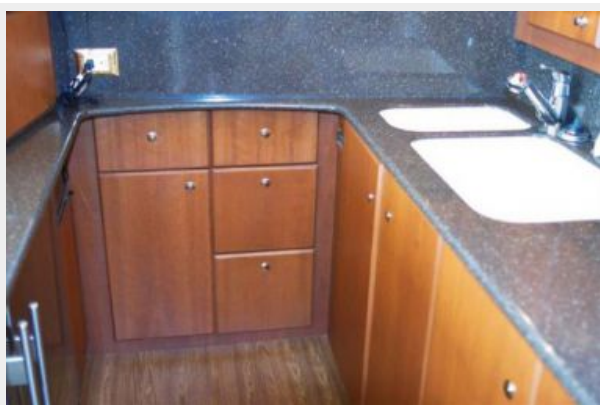


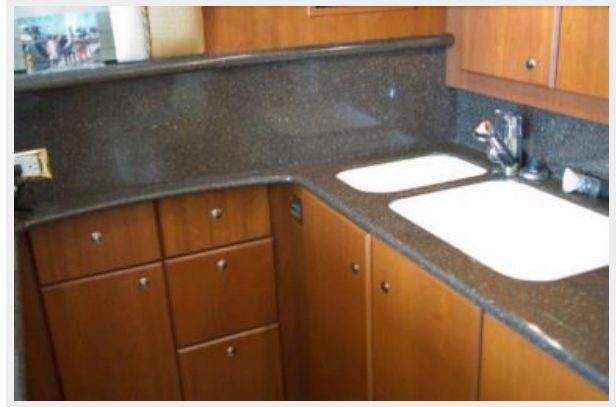
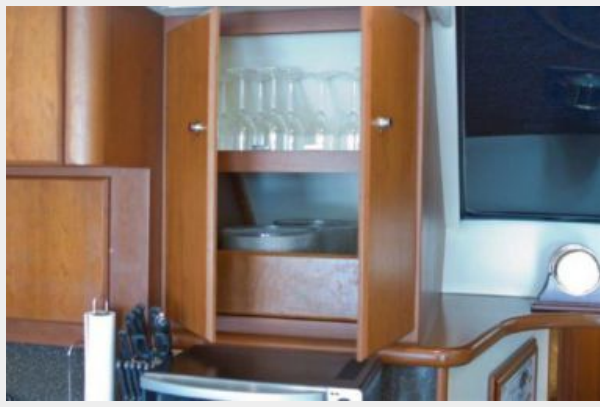






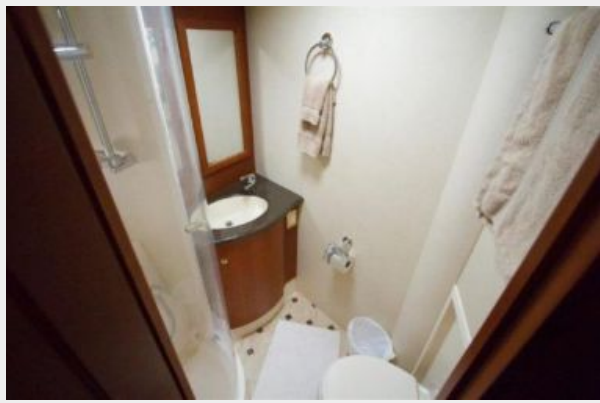
















КОНТАКТЫ

Андрей Шестаков (Andrey Shestakov) – ведущий яхтенный брокер отдела продаж яхт и судов компании Shestakov Yacht Sales Inc. Официальный представитель Shestakov Yacht Sales Inc. для русскоговорящих клиентов в центральном офисе компании в Майами/Форт Лодердейл/Флорида/США.

Контактная информация

Email: andrey@shestakovyachtsales.com

Web: shestakovyachtsales.com

Телефоны

Краснодарский край: **+7(918)465-66-44**

США, Майами, Флорида: **+1(954)274-4435**

Время работы

Понедельник – Суббота: **9:00 - 21:00**
EDT

Воскресенье: **Закрито**

Адрес



Harbour Towne Marina, 850 NE 3rd St,
STE 213, Dania, FL 33004