

2014 AZIMUT 55S — AZIMUT



Builder: AZIMUT

Year Built: 2014

Model: Motor Yacht

Price: PRICE ON APPLICATION

Location: United States

LOA: 55' 0" (16.76m)

Beam: 15' 7" (4.75m)

Min Draft: 3' 9" (1.14m)

Max Draft: 3' 9" (1.14m)

Cruise Speed: 30 Kts. (35 MPH)

Max Speed: 35 Kts. (40 MPH)

Our experienced yacht broker, Andrey Shestakov, will help you choose and buy a yacht that best suits your needs 2014 AZIMUT 55S — AZIMUT from our catalogue. Presently, at Shestakov Yacht Sales Inc., we have a wide variety of yachts available on our sale's list. We also work in close contact with all the big yacht manufacturers from all over the world.

If you would like to buy a yacht 2014 AZIMUT 55S — AZIMUT or would like help answering any questions concerning purchasing, selling or chartering a yacht, please call +1(954)274-4435

TABLE OF CONTENTS

TABLE OF CONTENTS	2
SPECIFICATIONS	3
Basic Information	3
Dimensions	3
Speed, Capacities and Weight	3
Accommodations	3
Hull and Deck Information	3
Engine Information	4
DETAILED INFORMATION	5
FEATURES	5
DETAILS OF THE HULL	6
ELECTRIC SYSTEMS KEY FEATURES	10
Exclusions	14
Disclaimer	14
PHOTOS	15
CONTACTS	17
Contact details	17
Telephones	17
Office hours	17
Address	17

SPECIFICATIONS

Basic Information

Category: Motor Yacht

Model Year: 2014

Year Built: 2014

Country: United States

Dimensions

LOA: 55' 0" (16.76m)

Beam: 15' 7" (4.75m)

Min Draft: 3' 9" (1.14m)

Max Draft: 3' 9" (1.14m)

Speed, Capacities and Weight

Cruise Speed: 30 Kts. (35 MPH)

Max Speed: 35 Kts. (40 MPH)

Accommodations

Total Cabins: 3

Total Berths: 4

Sleeps: 6

Total Heads: 3

Crew Cabin: 1

Hull and Deck Information

Hull Material: Fiberglass

Deck Material: Teak

Hull Configuration: Round

Engine Information

Engines: 3

Manufacturer: Volvo

Model: IPS 435

Engine Type: Inboard

Fuel Type: Diesel

DETAILED INFORMATION

FEATURES

- 2014 AZIMUT AZ55S-OPN
- TRIPLE VOLVO IPS 435

OPTIONS: ADVANCED PACK:

- Chain washing system
- Double Racor filters for main engineS
- Spare conduits connecting Engine Room/Wheelhouse/Radar Arch
- Electric mooring winches in Cockpit
- Tender hauling-launching system
- Exclusive Decor
- Miele Appliances (Microwave Combo and Cook Top)
- Chain counter control at Main Helm

DELUXE PACK:

- Bow Thruster
- Cockpit table (with hi-low system and sun bathing cushions on 55S)
- Electric awning for Aft Cockpit
- Flagpole
- Sunbathing cushions on Bow
- Teak on Cockpit deck
- Two floodlights installed on Aft Flybridge
- Mosquito nets for potholes
- Safe in Master Cabin
- Set of linen (crew cabin excluded)
- Set of stainless steel cooking pans
- Wooden floor in salon, dinette and helm station
- Dynamic positioning system - sky hook
- One Glendenning cable master
- Cockpit cabinet with BBQ, ice maker and trash compartment
- Painted Hull
- Teak on garage door/ second swim platform
- Teak on side decks
- Telescopic gangway
- Co-pilot seat at main Helm
- Crew Cabin with Air Conditioning
- Set of linen - Crew Cabin
- Sunroof with glass panels
- Washer-Dryer combo unit

- Hi-lo system for TV - (TV not included)
- Teak Deck on Swim Platform
- Salon Dinette Conversion
- Cockpit docking/ maneuvering station
- Electric shade for Salon sunroof
- Removable gold ray pkg from advance pk
- Replace with platinum w/gs display
- LED lighting for exterior & interior with dimmers in Salon
- Volvo Autotrim interceptor
- 2 Cockpit chairs
- Decor upgrading
- Fwd Sunpad cover
- Aft bench seat cover
- Table cover
- Complete A/V Package
- Fwd bench seat cover

DETAILS OF THE HULL

- The structural design for the hull has been approved by the RINA. This implies a guarantee of the structural quality which is also corroborated by the advanced techniques and materials used.
- Materials and building techniques are the result of researchers to obtain the best performance in quality, weight and stiffness.
- Hull sides, cabin trays and superstructures are reinforced with PVC foam cored sandwich (in order to achieve maximum rigidity and impact resistance) and have been built using the infusion technique which reduces weight, increasing the quality level.
- VINYLESTER RESIN is used for the first coats of the hull lamination.
- This kind of resin is extremely effective in preventing osmosis, thanks to its chemical and physical characteristics. On this basis, Azimut can offer a 5-year warranty against osmosis.
- Deck, deck house and top are made by glass-carbon and vinylester resin, to guarantee higher stiffness and mechanical resistance reducing weight.
- The bulkheads are made of Sandwich panels of top-quality PVC foam.
- Main joinings (like hull and superstructure) are made by structural bond. The keel is a deep V type with an aft deadrise of 15.8° and 21° amidship.
- Trim tabs increase the boat lift and reduce rolling effect.

ENGINES

- VOLVO D6 - 455 IPS 600
- 6-cylinder diesel engine
- Power Output: 320 kW, 455 mHp

EXTERNAL LAYOUT BOW

- Anchor chain compartment
- Chain washdown
- Anchor - DELTA 25 kg
- Calibrated chain 10mm L= 75m high resistance
- Stainless steel bow roller anchor holder
- 1,500W winch
- 2 Cleats, one per side
- Sundeck seating with two handrails and parallel twin sofa provided in fiberglass walkways
- Fuel refill, 1 tank each side
- Freshwater refill 1 "Water" cap D.85 mm without cover, Starboard side
- Waste water drainage outlet 1 "Waste" water drainage cap D. 75mm without cover, Port side
- Intermediate cleats
- Non-slip flooring in fiberglass (Diamond design)

STERN COCKPIT

- Stern access with two passages, one for land access (starboard, next to the Gangway), the second for access via platform (Port side)
- Lounge access door in stainless steel with 4 doors of which 3 are sliding doors
- Cockpit bench made in fiberglass built into the deck
- Access to the Engine Room through the Cockpit bench Port side
- Landing engine door
- Teak flooring
- Warping station
- Watertight spotlights inserted in the Cockpit ceiling
- Fire prevention command with plex protection door
- Flexible bag fender holder inside the Cockpit bench
- Rope locker under the warping stations (1 per side)
- Bow storage locker in the Cockpit bench right side
- Locker bottle/glass holder on left side of the Cockpit bench
- N.B. The garage is sized to accommodate a Williams 285 with collapsible back and steering wheel that can be dismantled
- N.B. The garage door closes firmly against the roof but is not watertight, thus avoid leaving objects in this area that can be damaged by water/moisture.

INTERNAL LAYOUT DECK HOUSE AND DECK HELM STATION

- Floor-mounted pilot seat + floor-mounted bench
- Under seat tableware holder area
- Manual window
- Rudder wheel
- The dashboard includes:
 - Engine controls
 - Various switches (horn, navigation lights, wipers, etc.)

- Cigarette lighter socket 12V
- Easy cruising system Raymarine
- Diesel fuel level digital Indicators
- Display 7" Volvo
- 3 Rev counters
- 3 sets of engine ignition keys
- N.B. Electronic navigation instrumentation: see relevant paragraph

SALOON, DINETTE AND GALLEY

- Open plan with kitchen furniture right side
- Drop-leaf kitchen that covers the appliances when not in use.
- 3 Burner hob
- 20 l Microwave Oven
- 1 Stainless steel sink
- Fridge 130 lt
- Freezer 90 lt
- C shaped sofa Port side with total of 4 seats, retractable hard top with command in the dashboard.
- Carpet flooring
- Curtain lounge door
- Halogen lighting
- Open up floor-mounted table, with storage inside the base
- TV systems setup with antenna
- Stainless steel handrail descent cabin staircase
- Upholstered ceiling and walls

LOWER DECK OWNER'S CABIN (AMIDSHIP)

- Double bed located diagonally with headboard Starboard side
- Pull down bed with spacious locker beneath
- Support surface behind the bed
- Vanity table with chairs on left side
- Spotlight lighting and LED strip lights on the Deck head and end of bed.
- 2 open-able portholes, one for each side (rectangular porthole inserted in window structure)
- Rectangular hull windows
- Direct access to the bathroom
- 1 Mirror in vanity table
- 1 Mirror in the wardrobe
- Venetian aluminium blinds for windows
- Fabric upholstered bulwarks
- Fabric upholstered ceiling
- Carpet flooring
- 2 Wall mounted headboard lights
- Wardrobe with 2 doors with internal shelves behind the headboard

- Cabin access step lights
- Electrical sockets 220V (next to the bed and under the vanity table)
- Provision of TV system with antenna

OWNER'S HEAD

- Located forward of the Master Cabin on the hand left side
- Access from Master Cabin
- Top and oval sink in black cold glass
- TECMA toilet
- Tap with chrome plated mixer
- Separate shower with flat door
- Shower column and seat in black metal ABS
- 2 door wall cupboard above the washbasin
- Lighting: ceiling lighting on wall cupboard and spotlights in the shower
- 1 open-able porthole with aluminium blinds
- Zebrano design flooring with Zebrano design grating
- Bathroom extractor fan: forced intake (from shower ceiling)
- 1 Toilet holder
- 2 Hangers
- 1 Soap dispenser
- 1 Toilet roll holder
- 1 Towel holder
- 1 Plex shower soap holder

VIP CABIN (BOW)

- Floor-mounted double bed
- 2 Wall cabinets above lateral windows
- 1 Wardrobe with rails on the Port side
- 1 wardrobe with shelves on Starboard side
- Bolster on walls each side of the bed
- 2 Under-bed lockers
- 2 Wall mounted headboard lights
- Carpet flooring
- Fixed panoramic windows
- Rectangular deck hatch with access to the Bow sundeck area
- Aluminium blinds for windows
- Spotlights
- Fabric upholstered walls
- Upholstered panel ceiling
- Direct access to the VIP bathroom
- 220V Electrical socket at the side of the headboard

GUEST CABIN

- Positioned on the Starboard side
- 2 Single floor mounted beds
- 1 central nightstand between the beds
- 1 wardrobe with rail and shelves
- Under-bed lockers
- Fibreglass ceiling with upholstered panels
- Fabric upholstered bulwarks
- 1 open-able round porthole
- Aluminium blind curtain
- Carpet flooring
- Halogen spotlight lighting
- Wall mounted headboard lights

VIP/GUEST HEAD

- Located astern of the VIP Cabin, on the Port side
- Direct access from the VIP Cabin or from the corridor
- TECMA Toilet
- Zebrawood top and black cold glass oval washbasin
- Chrome plated mixer tap
- Round Shower not separated (3 sides)
- Shower frame and seat in black metal ABS
- 2 Door wall cupboard above the washbasin
- Lighting: ceiling lighting on wall cupboard and spotlights in the shower
- Open-able porthole with aluminium blinds
- Zebrano design flooring with Zebrano style grating
- Natural air extraction
- 1 Toilet holder
- 2 Hangers
- 1 Soap dispenser
- 1 Toilet roll holder
- 1 Towel holder
- 1 Plex shower soap holder

ELECTRIC SYSTEMS KEY FEATURES

- The voltages on board are: 60 Hz
- 1 QDC1 = Switchboard distribution 24Vdc Engine Room
- 1 QDC2 = Aux Switchboard 24Vdc Engine Room
- 1 QDC3 = Drop down door Guest cabin
- 1 QAC1 = Main Switchboard 120/230Vac Engine Room
- 1 QAC2 = Back up Switchboard Distribution 220V flap door guest cabin
- 1 HPAC = Utilities Control Panel 120/230Vac Under dashboard

- 1 HPDC = Utilities Control Panel 24Vdc under dashboard
- Wheelhouse = electric system built into the IPS
- 2 Electric trim tabs 24V, 16" x 17" AISI 316
- Panel utilities cockpit:
- Services battery cut-out switches button
- Engine 1 battery cut-out switches button
- Engine 2 battery cut-out switches button
- Engine 3 battery cut-out switches button
- Generator battery cut-out switches button

ENERGY SOURCES: GENERATOR

- 22 KW - 220V / 60Hz generator is provided

DOCKSIDE SOCKET

- 1 220V - 50° services socket
- BATTERIES
- Services: 6 connected batteries to provide 12V 90 Ah each
- Engines: 6 batteries, two for each engine, which supply 12V 70 Ah each
- Generator: 1 battery that provides 12V 70 Ah
- 50A electronic charger (220 / 110V)
- 10A electronic charger (220 / 110V)

SOCKETS AND LIGHTS

- AC socket: EU type
- DC socket : cigarette lighter type (helm station)
- 24V lighting (halogen)
- 24V watertight external lights
- TV socket in the lounge and in the master cabin

ELECTRONIC NAVIGATION INSTRUMENTS

- 1 Opus A6 Eco FULL 7" Alarms display / Utilities Operation
- Raymarine Bronze package
- N.B. Due to ongoing upgrades, the electronic configuration indicated may undergo changes.

BILGE SYSTEM

- No. 4 24V electric pumps - (3 in the engine room, 1 in the master cabin). Capacity: 2 pumps of 237 l/min and 2
- of 82 l/min with drainage on the side of the ship
- No. 2 emergency hand pumps; 1 in the engine room and 1 in the master cabin with wall drainage (Flow rate: 49
- l/min)

- No.1 - 24V electric pumps supersub smart 650 (Flow rate: 2040 l/h, 1 mt depth)
- Level alarms on the alarms display

FIRE EXTINGUISHING SYSTEM

- Cables in cockpit and emergency key
- 2 RINA approved powder canisters with nozzles on engines

DIESEL SYSTEM

- Stainless steel tank provided with 1600 l attachments, divided into two 800 l watertight compartments
- Fuel level electronic gauge on easy cruising system
- Fuel level optical gauge on starboard tank in the engine room
- No. 3 individual decanter filters (RACOR 500) for the engines
- No. 1 PFA20 NAUCO filter for Generator
- No. 2 diesel fuel cap on walkway
- No. 2 wall vents
- Remote diesel fuel interception (engine and generator) by means of a 24V solenoid valve
- Communication line between the two compartments that allows levelling of the fuel
- Fuel bleeding tap

FRESH WATER SYSTEM

- A 590 l polyethylene tank under the floor of the cabin access corridor
- Water refill from bow (starboard side)
- Level sensor with electronic indicator in the dashboard
- 1 tank vent on port side of the ship
- FEIT 890 QDCE autoclave with 24V (45 lt/min) silent blocks in engine room
- 60 l heater Sigmar Compact 220V - 800W in the engine room
- Hot and cold water line: all the bathrooms, kitchen, external platform shower; only cold water engine room, cockpit furniture when assembled
- Fresh water flushing WC
- System can be selected via ACORN type collectors

GREY WATER SYSTEM

- One polyethylene 225 l tank under the floor of the cabin access corridor
- 2 step level sensor, alarm indicator in the dashboard
- Water drainage: from container (auto / manual) under bed VIP cabin
- FEIT diaphragm pump under guests cabin floor

BLACK WATER SYSTEM

- 1 225 l polyethylene tank under the VIP cabin flooring
- 2 step level sensor

- 1 starboard wall tank vents with odour filter
- 1 FEIT PVM 0.2 macerator pump under guest cabin flooring
- Covered walkway extraction (port side)
- VIP cabin under bed overboard drainage
- Tecma toilet (with macerating pump). All the toilet drain into containers (including crew when provided)

SEAWATER SYSTEM

- Engine cooling system: dynamic sea intake, integrated within IPS for port and starboard engines and dynamic keel intake with ball valve located forward of the bow of the port engine that serves the central engine
- Generator cooling system: underwater discharge 1 dynamic sea intake (1") with filter and valve
- Conditioner cooling system: underwater discharge 1 dynamic sea intake (1") with filter and valve
- Chain washer: sea water

ENGINE ROOM (OTHER)

- Access to the engine room through the cockpit bench, left hand side
- Soundproofing

VENTILATION

- Aeration bathrooms: forced extraction 24V in the master bathroom and natural in the VIP one
- Engine room:
- Intake natural air through hull wall air intake with U-bend (1 per side)
- Forced extraction: with number 2 24V fans (1 per side)

OTHER SYSTEMS

- Retractable roof: movement of the roof is via two hydraulic cylinders attached to the top deckhouse and driven by electro-hydraulic 24V control panel positioned in the engine room. Movement of the roof is managed via buttons located in the dashboard.
- Garage door: the movement of the garage door takes place by means of two hydraulic cylinders attached to the deck and driven by the 24V.electro-hydraulic control panel . The door control panel is the same that operates the walkway. Movement of the door is managed via a panel located on the right side of the cockpit bench (gangway access side)

MISCELLANEOUS

- Set plates, glasses, cutlery for 6 persons
- Set stainless steel saucepans mod. Super Yacht
- Boathook
- 5 mooring lines of 12 m, dia. 20 mm

- 8 mooring lines of 3 m and dia 8 mm
- 6 fenders dimensions 900 x 300 - white
- 6 cover-fenders H. 830 C/Azimut brand
- 2 keys filler caps
- 3 Opacmare remote controls
- 2 sets of keys lounge door
- Manual + bag

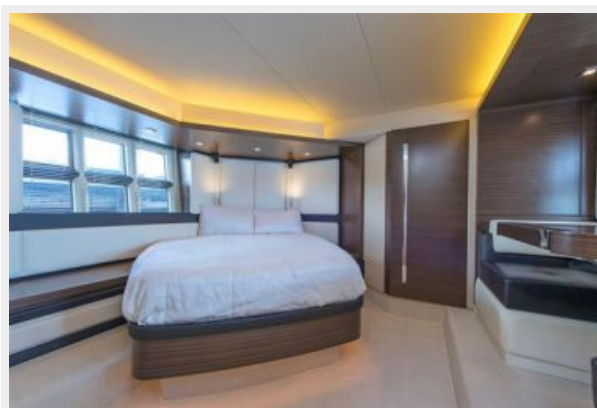
Exclusions

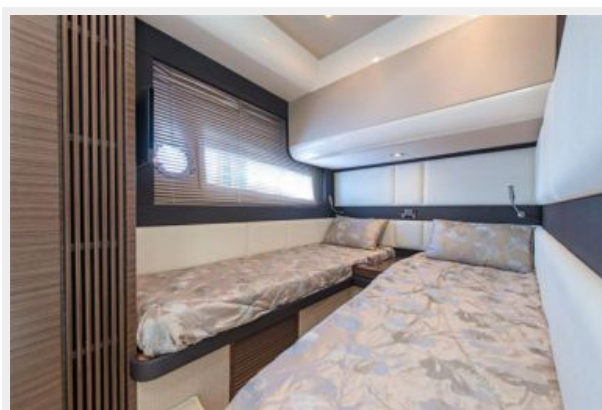
Owner's personal belongings.

Disclaimer

The Company offers the details of this vessel or yacht in good faith but cannot guarantee or warrant the accuracy of this information nor warrant the condition of the vessel. A buyer should instruct his representatives, agents, or his surveyors, to investigate such details as the buyer desires validated. This vessel or yacht is offered subject to prior sale, price change, or withdrawal without notice.

PHOTOS





CONTACTS

Andrey Shestakov, leading yacht broker of the sales department of Shestakov Yacht Sales Inc. Shestakov Yacht Sales Inc., the official representative of the Miami/Fort Lauderdale FL headquarters.

Contact details

Email:
andrey@shestakovyachtsales.com

Web: shestakovyachtsales.com/en/

Telephones

USA: **+1(954)274-4435**

Office hours

Monday – Saturday: **9:00 - 21:00 EDT**

Sunday: **closed**

Address



Harbour Towne Marina, 850 NE 3rd St,
STE 213, Dania, FL 33004