

2014 AZIMUT 55S — AZIMUT



Судостроитель: [AZIMUT](#)

Год постройки: 2014

Модель: Моторная яхта

Цена: **ЦЕНА ЯХТЫ ПО ЗАПРОСУ**

Местонахождение: United States

Длина общая: 55' 0" (16.76m)

Ширина: 15' 7" (4.75m)

Мин. осадка: 3' 9" (1.14m)

Макс. осадка: 3' 9" (1.14m)

Крейс. скорость: 30 Kts. (35 MPH)

Макс. скорость: 35 Kts. (40 MPH)

Купить 2014 AZIMUT 55S — AZIMUT а также выбрать подходящую вам яхту из нашего каталога яхт вам поможет опытный яхтенный брокер Андрей Шестаков. На сегодняшний день компания Shestakov Yacht Sales Inc. имеет большое количество яхт в собственном списке продаж, а также тесно сотрудничает со всеми крупными яхтенными производителями по всему миру.

Для того чтобы купить яхту 2014 AZIMUT 55S — AZIMUT а также проконсультироваться по любому вопросу связанному с покупкой, продажей, чартером яхт позвоните по телефону **+7(918)465-66-44**.

ОГЛАВЛЕНИЕ

ОГЛАВЛЕНИЕ	2
ХАРАКТЕРИСТИКИ	3
Основная информация	3
Размеры	3
Скорость, вместимость и масса	3
Размещение	3
Корпус и палуба	3
Информация о двигателе	4
ПОДРОБНОЕ ОПИСАНИЕ	5
FEATURES	5
DETAILS OF THE HULL	6
ELECTRIC SYSTEMS KEY FEATURES	10
Исключения	14
Отказ от ответственности	14
ФОТОГРАФИИ	15
КОНТАКТЫ	17
Контактная информация	17
Телефоны	17
Время работы	17
Адрес	17

ХАРАКТЕРИСТИКИ

Основная информация

Тип судна: Моторная яхта

Модельный год: 2014

Год постройки: 2014

Страна: United States

Размеры

Длина общая: 55' 0" (16.76m)

Ширина: 15' 7" (4.75m)

Мин. осадка: 3' 9" (1.14m)

Макс. осадка: 3' 9" (1.14m)

Скорость, вместимость и масса

Крейс. скорость: 30 Kts. (35 MPH)

Макс. скорость: 35 Kts. (40 MPH)

Размещение

Всего кают: 3

Всего коек: 4

Спальные места: 6

Всего ком. состава: 3

Каюты экипажа: 1

Корпус и палуба

Материал корпуса: Fiberglass

Материал палубы: Teak

Комплектация корпуса: Round

Информация о двигателе

Двигатели: 3

Производитель: Volvo

Модель: IPS 435

Тип двигателя: Inboard

Тип топлива: Diesel

ПОДРОБНОЕ ОПИСАНИЕ

FEATURES

- 2014 AZIMUT AZ55S-OPN
- TRIPLE VOLVO IPS 435

OPTIONS: ADVANCED PACK:

- Chain washing system
- Double Racor filters for main engineS
- Spare conduits connecting Engine Room/Wheelhouse/Radar Arch
- Electric mooring winches in Cockpit
- Tender hauling-launching system
- Exclusive Decor
- Miele Appliances (Microwave Combo and Cook Top)
- Chain counter control at Main Helm

DELUXE PACK:

- Bow Thruster
- Cockpit table (with hi-low system and sun bathing cushions on 55S)
- Electric awning for Aft Cockpit
- Flagpole
- Sunbathing cushions on Bow
- Teak on Cockpit deck
- Two floodlights installed on Aft Flybridge
- Mosquito nets for potholes
- Safe in Master Cabin
- Set of linen (crew cabin excluded)
- Set of stainless steel cooking pans
- Wooden floor in salon, dinette and helm station
- Dynamic positioning system - sky hook
- One Glendenning cable master
- Cockpit cabinet with BBQ, ice maker and trash compartment
- Painted Hull
- Teak on garage door/ second swim platform
- Teak on side decks
- Telescopic gangway
- Co-pilot seat at main Helm
- Crew Cabin with Air Conditioning
- Set of linen - Crew Cabin
- Sunroof with glass panels
- Washer-Dryer combo unit

- Hi-lo system for TV - (TV not included)
- Teak Deck on Swim Platform
- Salon Dinette Conversion
- Cockpit docking/ maneuvering station
- Electric shade for Salon sunroof
- Removable gold ray pkg from advance pk
- Replace with platinum w/gs display
- LED lighting for exterior & interior with dimmers in Salon
- Volvo Autotrim interceptor
- 2 Cockpit chairs
- Decor upgrading
- Fwd Sunpad cover
- Aft bench seat cover
- Table cover
- Complete A/V Package
- Fwd bench seat cover

DETAILS OF THE HULL

- The structural design for the hull has been approved by the RINA. This implies a guarantee of the structural quality which is also corroborated by the advanced techniques and materials used.
- Materials and building techniques are the result of researchers to obtain the best performance in quality, weight and stiffness.
- Hull sides, cabin trays and superstructures are reinforced with PVC foam cored sandwich (in order to achieve maximum rigidity and impact resistance) and have been built using the infusion technique which reduces weight, increasing the quality level.
- VINYLESTER RESIN is used for the first coats of the hull lamination.
- This kind of resin is extremely effective in preventing osmosis, thanks to its chemical and physical characteristics. On this basis, Azimut can offer a 5-year warranty against osmosis.
- Deck, deck house and top are made by glass-carbon and vinylester resin, to guarantee higher stiffness and mechanical resistance reducing weight.
- The bulkheads are made of Sandwich panels of top-quality PVC foam.
- Main joinings (like hull and superstructure) are made by structural bond. The keel is a deep V type with an aft deadrise of 15.8° and 21° amidship.
- Trim tabs increase the boat lift and reduce rolling effect.

ENGINES

- VOLVO D6 - 455 IPS 600
- 6-cylinder diesel engine
- Power Output: 320 kW, 455 mHp

EXTERNAL LAYOUT BOW

- Anchor chain compartment
- Chain washdown
- Anchor - DELTA 25 kg
- Calibrated chain 10mm L= 75m high resistance
- Stainless steel bow roller anchor holder
- 1,500W winch
- 2 Cleats, one per side
- Sundeck seating with two handrails and parallel twin sofa provided in fiberglass walkways
- Fuel refill, 1 tank each side
- Freshwater refill 1 "Water" cap D.85 mm without cover, Starboard side
- Waste water drainage outlet 1 "Waste" water drainage cap D. 75mm without cover, Port side
- Intermediate cleats
- Non-slip flooring in fiberglass (Diamond design)

STERN COCKPIT

- Stern access with two passages, one for land access (starboard, next to the Gangway), the second for access via platform (Port side)
- Lounge access door in stainless steel with 4 doors of which 3 are sliding doors
- Cockpit bench made in fiberglass built into the deck
- Access to the Engine Room through the Cockpit bench Port side
- Landing engine door
- Teak flooring
- Warping station
- Watertight spotlights inserted in the Cockpit ceiling
- Fire prevention command with plex protection door
- Flexible bag fender holder inside the Cockpit bench
- Rope locker under the warping stations (1 per side)
- Bow storage locker in the Cockpit bench right side
- Locker bottle/glass holder on left side of the Cockpit bench
- N.B. The garage is sized to accommodate a Williams 285 with collapsible back and steering wheel that can be dismantled
- N.B. The garage door closes firmly against the roof but is not watertight, thus avoid leaving objects in this area that can be damaged by water/moisture.

INTERNAL LAYOUT DECK HOUSE AND DECK HELM STATION

- Floor-mounted pilot seat + floor-mounted bench
- Under seat tableware holder area
- Manual window
- Rudder wheel
- The dashboard includes:
 - Engine controls
 - Various switches (horn, navigation lights, wipers, etc.)

- Cigarette lighter socket 12V
- Easy cruising system Raymarine
- Diesel fuel level digital Indicators
- Display 7" Volvo
- 3 Rev counters
- 3 sets of engine ignition keys
- N.B. Electronic navigation instrumentation: see relevant paragraph

SALOON, DINETTE AND GALLEY

- Open plan with kitchen furniture right side
- Drop-leaf kitchen that covers the appliances when not in use.
- 3 Burner hob
- 20 l Microwave Oven
- 1 Stainless steel sink
- Fridge 130 lt
- Freezer 90 lt
- C shaped sofa Port side with total of 4 seats, retractable hard top with command in the dashboard.
- Carpet flooring
- Curtain lounge door
- Halogen lighting
- Open up floor-mounted table, with storage inside the base
- TV systems setup with antenna
- Stainless steel handrail descent cabin staircase
- Upholstered ceiling and walls

LOWER DECK OWNER'S CABIN (AMIDSHIP)

- Double bed located diagonally with headboard Starboard side
- Pull down bed with spacious locker beneath
- Support surface behind the bed
- Vanity table with chairs on left side
- Spotlight lighting and LED strip lights on the Deck head and end of bed.
- 2 open-able portholes, one for each side (rectangular porthole inserted in window structure)
- Rectangular hull windows
- Direct access to the bathroom
- 1 Mirror in vanity table
- 1 Mirror in the wardrobe
- Venetian aluminium blinds for windows
- Fabric upholstered bulwarks
- Fabric upholstered ceiling
- Carpet flooring
- 2 Wall mounted headboard lights
- Wardrobe with 2 doors with internal shelves behind the headboard

- Cabin access step lights
- Electrical sockets 220V (next to the bed and under the vanity table)
- Provision of TV system with antenna

OWNER'S HEAD

- Located forward of the Master Cabin on the hand left side
- Access from Master Cabin
- Top and oval sink in black cold glass
- TECMA toilet
- Tap with chrome plated mixer
- Separate shower with flat door
- Shower column and seat in black metal ABS
- 2 door wall cupboard above the washbasin
- Lighting: ceiling lighting on wall cupboard and spotlights in the shower
- 1 open-able porthole with aluminium blinds
- Zebrano design flooring with Zebrano design grating
- Bathroom extractor fan: forced intake (from shower ceiling)
- 1 Toilet holder
- 2 Hangers
- 1 Soap dispenser
- 1 Toilet roll holder
- 1 Towel holder
- 1 Plex shower soap holder

VIP CABIN (BOW)

- Floor-mounted double bed
- 2 Wall cabinets above lateral windows
- 1 Wardrobe with rails on the Port side
- 1 wardrobe with shelves on Starboard side
- Bolster on walls each side of the bed
- 2 Under-bed lockers
- 2 Wall mounted headboard lights
- Carpet flooring
- Fixed panoramic windows
- Rectangular deck hatch with access to the Bow sundeck area
- Aluminium blinds for windows
- Spotlights
- Fabric upholstered walls
- Upholstered panel ceiling
- Direct access to the VIP bathroom
- 220V Electrical socket at the side of the headboard

GUEST CABIN

- Positioned on the Starboard side
- 2 Single floor mounted beds
- 1 central nightstand between the beds
- 1 wardrobe with rail and shelves
- Under-bed lockers
- Fibreglass ceiling with upholstered panels
- Fabric upholstered bulwarks
- 1 open-able round porthole
- Aluminium blind curtain
- Carpet flooring
- Halogen spotlight lighting
- Wall mounted headboard lights

VIP/GUEST HEAD

- Located astern of the VIP Cabin, on the Port side
- Direct access from the VIP Cabin or from the corridor
- TECMA Toilet
- Zebrawood top and black cold glass oval washbasin
- Chrome plated mixer tap
- Round Shower not separated (3 sides)
- Shower frame and seat in black metal ABS
- 2 Door wall cupboard above the washbasin
- Lighting: ceiling lighting on wall cupboard and spotlights in the shower
- Open-able porthole with aluminium blinds
- Zebrano design flooring with Zebrano style grating
- Natural air extraction
- 1 Toilet holder
- 2 Hangers
- 1 Soap dispenser
- 1 Toilet roll holder
- 1 Towel holder
- 1 Plex shower soap holder

ELECTRIC SYSTEMS KEY FEATURES

- The voltages on board are: 60 Hz
- 1 QDC1 = Switchboard distribution 24Vdc Engine Room
- 1 QDC2 = Aux Switchboard 24Vdc Engine Room
- 1 QDC3 = Drop down door Guest cabin
- 1 QAC1 = Main Switchboard 120/230Vac Engine Room
- 1 QAC2 = Back up Switchboard Distribution 220V flap door guest cabin
- 1 HPAC = Utilities Control Panel 120/230Vac Under dashboard

- 1 HPDC = Utilities Control Panel 24Vdc under dashboard
- Wheelhouse = electric system built into the IPS
- 2 Electric trim tabs 24V, 16" x 17" AISI 316
- Panel utilities cockpit:
- Services battery cut-out switches button
- Engine 1 battery cut-out switches button
- Engine 2 battery cut-out switches button
- Engine 3 battery cut-out switches button
- Generator battery cut-out switches button

ENERGY SOURCES: GENERATOR

- 22 KW - 220V / 60Hz generator is provided

DOCKSIDE SOCKET

- 1 220V - 50° services socket
- BATTERIES
- Services: 6 connected batteries to provide 12V 90 Ah each
- Engines: 6 batteries, two for each engine, which supply 12V 70 Ah each
- Generator: 1 battery that provides 12V 70 Ah
- 50A electronic charger (220 / 110V)
- 10A electronic charger (220 / 110V)

SOCKETS AND LIGHTS

- AC socket: EU type
- DC socket : cigarette lighter type (helm station)
- 24V lighting (halogen)
- 24V watertight external lights
- TV socket in the lounge and in the master cabin

ELECTRONIC NAVIGATION INSTRUMENTS

- 1 Opus A6 Eco FULL 7" Alarms display / Utilities Operation
- Raymarine Bronze package
- N.B. Due to ongoing upgrades, the electronic configuration indicated may undergo changes.

BILGE SYSTEM

- No. 4 24V electric pumps - (3 in the engine room, 1 in the master cabin). Capacity: 2 pumps of 237 l/min and 2
- of 82 l/min with drainage on the side of the ship
- No. 2 emergency hand pumps; 1 in the engine room and 1 in the master cabin with wall drainage (Flow rate: 49
- l/min)

- No.1 - 24V electric pumps supersub smart 650 (Flow rate: 2040 l/h, 1 mt depth)
- Level alarms on the alarms display

FIRE EXTINGUISHING SYSTEM

- Cables in cockpit and emergency key
- 2 RINA approved powder canisters with nozzles on engines

DIESEL SYSTEM

- Stainless steel tank provided with 1600 l attachments, divided into two 800 l watertight compartments
- Fuel level electronic gauge on easy cruising system
- Fuel level optical gauge on starboard tank in the engine room
- No. 3 individual decanter filters (RACOR 500) for the engines
- No. 1 PFA20 NAUCO filter for Generator
- No. 2 diesel fuel cap on walkway
- No. 2 wall vents
- Remote diesel fuel interception (engine and generator) by means of a 24V solenoid valve
- Communication line between the two compartments that allows levelling of the fuel
- Fuel bleeding tap

FRESH WATER SYSTEM

- A 590 l polyethylene tank under the floor of the cabin access corridor
- Water refill from bow (starboard side)
- Level sensor with electronic indicator in the dashboard
- 1 tank vent on port side of the ship
- FEIT 890 QDCE autoclave with 24V (45 lt/min) silent blocks in engine room
- 60 l heater Sigmar Compact 220V - 800W in the engine room
- Hot and cold water line: all the bathrooms, kitchen, external platform shower; only cold water engine room, cockpit furniture when assembled
- Fresh water flushing WC
- System can be selected via ACORN type collectors

GREY WATER SYSTEM

- One polyethylene 225 l tank under the floor of the cabin access corridor
- 2 step level sensor, alarm indicator in the dashboard
- Water drainage: from container (auto / manual) under bed VIP cabin
- FEIT diaphragm pump under guests cabin floor

BLACK WATER SYSTEM

- 1 225 l polyethylene tank under the VIP cabin flooring
- 2 step level sensor

- 1 starboard wall tank vents with odour filter
- 1 FEIT PVM 0.2 macerator pump under guest cabin flooring
- Covered walkway extraction (port side)
- VIP cabin under bed overboard drainage
- Tecma toilet (with macerating pump). All the toilet drain into containers (including crew when provided)

SEAWATER SYSTEM

- Engine cooling system: dynamic sea intake, integrated within IPS for port and starboard engines and dynamic keel intake with ball valve located forward of the bow of the port engine that serves the central engine
- Generator cooling system: underwater discharge 1 dynamic sea intake (1") with filter and valve
- Conditioner cooling system: underwater discharge 1 dynamic sea intake (1") with filter and valve
- Chain washer: sea water

ENGINE ROOM (OTHER)

- Access to the engine room through the cockpit bench, left hand side
- Soundproofing

VENTILATION

- Aeration bathrooms: forced extraction 24V in the master bathroom and natural in the VIP one
- Engine room:
- Intake natural air through hull wall air intake with U-bend (1 per side)
- Forced extraction: with number 2 24V fans (1 per side)

OTHER SYSTEMS

- Retractable roof: movement of the roof is via two hydraulic cylinders attached to the top deckhouse and driven by electro-hydraulic 24V control panel positioned in the engine room. Movement of the roof is managed via buttons located in the dashboard.
- Garage door: the movement of the garage door takes place by means of two hydraulic cylinders attached to the deck and driven by the 24V.electro-hydraulic control panel . The door control panel is the same that operates the walkway. Movement of the door is managed via a panel located on the right side of the cockpit bench (gangway access side)

MISCELLANEOUS

- Set plates, glasses, cutlery for 6 persons
- Set stainless steel saucepans mod. Super Yacht
- Boathook
- 5 mooring lines of 12 m, dia. 20 mm

- 8 mooring lines of 3 m and dia 8 mm
- 6 fenders dimensions 900 x 300 - white
- 6 cover-fenders H. 830 C/Azimut brand
- 2 keys filler caps
- 3 Opacmare remote controls
- 2 sets of keys lounge door
- Manual + bag

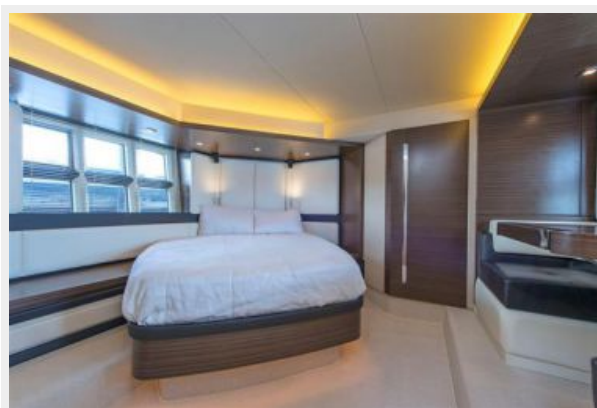
Исключения

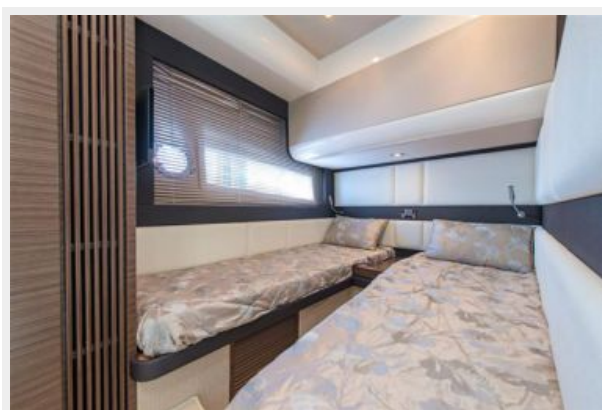
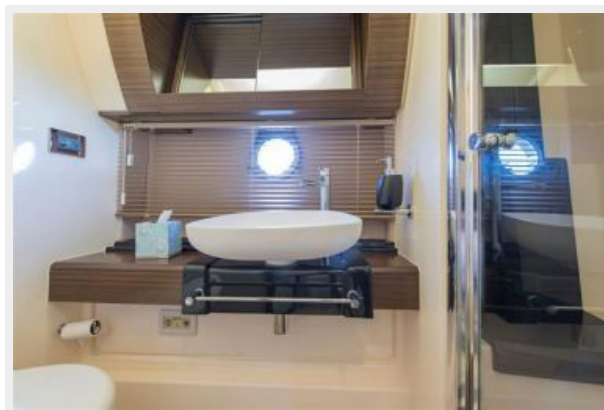
При продаже яхты исключаются личные вещи владельца.

Отказ от ответственности

Компания предоставляет описание судна или яхты добросовестно, но не может гарантировать точность этой информации, а также не ручается за техническое состояние. Покупатель должен проинструктировать своих агентов или оценщиков исследовать представленную информацию более подробно, по собственному желанию. Продажа судна или яхты, изменение цены или снятие с продажи будет происходить без предварительного уведомления.

ФОТОГРАФИИ





КОНТАКТЫ

Андрей Шестаков (Andrey Shestakov) – ведущий яхтенный брокер отдела продаж яхт и судов компании Shestakov Yacht Sales Inc. Официальный представитель Shestakov Yacht Sales Inc. для русскоговорящих клиентов в центральном офисе компании в Майами/Форт Лодердейл/Флорида/США.

Контактная информация

Email: andrey@shestakovyachtsales.com

Web: shestakovyachtsales.com

Телефоны

Краснодарский край: **+7(918)465-66-44**

США, Майами, Флорида: **+1(954)274-4435**

Время работы

Понедельник – Суббота: **9:00 - 21:00**
EDT

Воскресенье: **Закрето**

Адрес



Harbour Towne Marina, 850 NE 3rd St,
STE 213, Dania, FL 33004