

M/V SPECUALTION — AMERICAN



Builder: AMERICAN

Year Built: 1995

Model: Commercial Vessel

Price: PRICE ON APPLICATION

Location: United States

LOA: 230' 0" (70.10m)

Beam: 72' 0" (21.95m)

Min Draft: 6' 0" (1.83m)

Max Draft: 6' 3" (1.91m)

Cruise Speed: 10 Kts. (12 MPH)

Max Speed: 15 Kts. (17 MPH)

Our experienced yacht broker, Andrey Shestakov, will help you choose and buy a yacht that best suits your needs M/V SPECUALTION — AMERICAN from our catalogue. Presently, at Shestakov Yacht Sales Inc., we have a wide variety of yachts available on our sale's list. We also work in close contact with all the big yacht manufacturers from all over the world.

If you would like to buy a yacht M/V SPECUALTION — AMERICAN or would like help answering any questions concerning purchasing, selling or chartering a yacht, please call +1(954)274-4435

TABLE OF CONTENTS

TABLE OF CONTENTS	2
SPECIFICATIONS	4
Basic Information	4
Dimensions	4
Speed, Capacities and Weight	4
Hull and Deck Information	4
Engine Information	4
DETAILED INFORMATION	5
Additional Information	5
Exclusions	6
Disclaimer	6
PHOTOS	7
EXTERIOR VIEW OF BOW	7
Lights at Night	7
Coming Through Bridge	7
EXTERIOR PROFILE	7
EXTERIOR - MAIN DECK	8
VIEW OF FORDECK-FROM	8
FOREDECK	8
Aft Sky Lounge	8
Starboard Side - Looking Aft	8
Stairway	8
Stairway	9
STAIRWAY	9
Looking Forward	9
Looking on Harvey Canal	9
Looking to Starboard Quarter	9
SALON - WITH PEOPLE	9

Looking Forward	10
Looking Aft to Balcony	10
SALON	10
Panoramic View	10
SALON - SBD SIDE	10
Bar	10
75 KW - Auxilliary Generator	11
750 KW Generator	11
Tank Piping	11
Subpanels	11
Air Conditioning Space	11
Generator Switch Panel	11
Air Conditioning - Filter Room	12
Engine Room	12
Piping - Typical	12
Engine Room	12
CAT - T-38 - MAIN ENGINES	12
Engine Room	12
Bath Room	13
Bath Room	13
Video Recording Panel	13
"Hot & Cold Boxes"	13
Refrigeration	13
CONTACTS	14
Contact details	14
Telephones	14
Office hours	14
Address	14

SPECIFICATIONS

Basic Information

Category: Commercial Vessel

Sub Category: Cruise Ship

Model Year: 1995

Year Built: 1995

Country: United States

Dimensions

LOA: 230' 0" (70.10m)

LWL: 224' 9" (68.50m)

Beam: 72' 0" (21.95m)

Min Draft: 6' 0" (1.83m)

Max Draft: 6' 3" (1.91m)

Clearance: 53' 0" (16.15m)

Speed, Capacities and Weight

Cruise Speed: 10 Kts. (12 MPH)

Max Speed: 15 Kts. (17 MPH)

Displacement: 3393600 Pounds

Water Capacity: 30000 Gallons

Holding Tank: 4000 Gallons

Fuel Capacity: 24700 Gallons

Hull and Deck Information

Hull Material: Steel

Engine Information

Engines: 2

Manufacturer: Cummins

Model: KTA-38-M

Engine Type: Inboard

Fuel Type: Diesel

DETAILED INFORMATION

Additional Information

MV SPECUALTION has never been in service, but was wired for 1,078 Slot machines, 54 Gaming Tables, and a total of 1,456 Gaming Positions. There are four (4) decks - Square Footage is as follows:

- (1). Main Deck Casino: 8,525 Sq. Ft.
- (2). Balcony Deck Casino: 3,482 Sq. Ft.
- (3) Boiler Deck Casino: 8,721 Sq. Ft. -
- (4) Hurricane Deck Casino: 2,610 Sq. Ft.

Food Service Area: 1,216 Sq. Ft.

Total Interior Square Area: 25,430 Sq. Ft.

MECHANICAL INFO:

- * Twin CUMMINS T-38 Diesel Engines @ 825 HP
- * Twin Reduction Gears: ZF BW 251 - Ratio: 4.133:1
- * Bow Thruster: 30" Diameter - Powered by: CUMMINS 6BT 5.9-M, 200 HP
- * Main Generators: Three (3) 750 kW-CUMMINS KT-38-GC2-@ Provide Full Load Req
- * Emergency Generator: One (1) 250 kW - CUMMINS NT-855, 6 CYL Gen Set
- * Elevator-Fwd: One (1) Electro-Hydraulic Twin Piston Pass. Elev-Services 4 Decks
- " " "- Aft: One (1) Electro-Hydraulic Twin Piston Pass. Elev-Services 4 Decks
- * Air Condit: 340 Tons, Closed Loop Heat Pump Sys w/Electrostatic Filter-30 cmf/Pers, with individual Ten (10) ton air handlers, with "Bio-Climatic" Smoke Filtration System
- * Heating Sys: Heat Pumps with Electric Heat
- * Sanitation Sys: "Royal Fox" - MSD-Model # RF 7500 M-CBPND, (System Designed by "Head Hunter") with 4,000 Gal Holding Tank
- * Fuel Tank Capacity can be increased from 24,700 to 50,000 Gallons
- * Fresh Water Capacity can be increased from 30,000 to 50,000 Gallons

- * Liquor dispensing system to four (4) bars
- * Four (4) Full-Height - Stainless Refrigerator/Freezers
- * Four (4) Stainless "Hot and Cold Boxes"
- * Sprinkler System with two (2) pumps
- * Fire Main System, with two (2) pumps
- * Compressed Air System
- * Public Address & Sound System
- * CO2 Fire Extinguisher System for Engine & Generator Room

POSSIBLE USES:

MV SPECUALTION is ready for a new owner to make modifications for:

- * **RIVER & INTER-COASTAL OVERNIGHT PASSENGER SERVICES**
- * **A FOUR (4) DECK "MISSISSIPPI-STYLE" RIVERBOAT CASINO VESSEL**
- * **AS A FLOATING LAND-BASED CONVENTION OR EXHIBITION FACILITY**
- * **"BOATEL" - FOR UP TO 75 DELUXE "SUITES" - FOR 150 PASSENGERS**
- * **SHORE-SIDE ENTERTAINMENT COMPLEX - BARS, RESTAURANTS & SHOWS**
- * **FOR DAILY PASSENGER SERVICE - RIVER CRUISES**

Exclusions

Owner's personal belongings.

Disclaimer

The Company offers the details of this vessel or yacht in good faith but cannot guarantee or warrant the accuracy of this information nor warrant the condition of the vessel. A buyer should instruct his representatives, agents, or his surveyors, to investigate such details as the buyer desires validated. This vessel or yacht is offered subject to prior sale, price change, or withdrawal without notice.

PHOTOS

Lights at Night



EXTERIOR VIEW OF BOW



Coming Through Bridge



**"SPECULATION"
230' SIDEWHEEL CASINO BOAT**

This steam boat looking vessel was built by Jim Murray at his shipyard in Freeport, Florida for the Bennett Corporation in Buffalo, New York. This is a operating casino boat for use on all rivers. The drawings were completed and approved by the USCG for 1500 passengers. Bennett went bankrupt just before the vessel was completed. Mr. Phil Kingry got the vessel operating and ran it from Panama City to Pensacola where it was painted and cared for five years. Power is two 800 HP Cummins diesels with three 720 KW generators. Average speed was 10 MPH on trials and delivery. The boat was sold and is awaiting conversion to a dock side casino in Biloxi, Mississippi. The above photo shows the boat passing through the Bayou Chico Bridge in Pensacola. The boat is 72' wide the clearance width on the bridge is about 85'. The stacks have been removed to clear the bridge that can be seen behind the vessel.

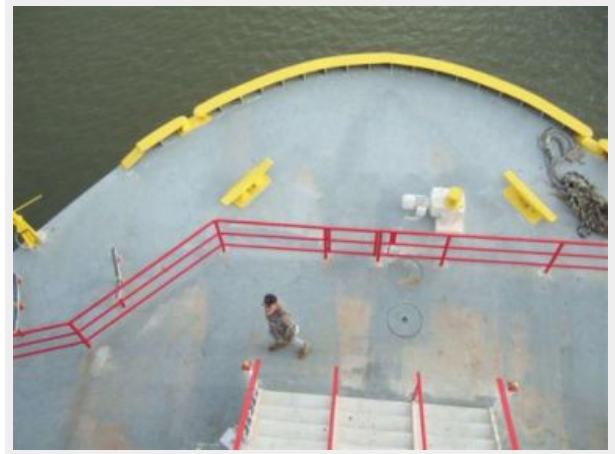
EXTERIOR PROFILE



EXTERIOR - MAIN DECK



VIEW OF FORDECK-FROM



FOREDECK



Aft Sky Lounge



Starboard Side - Looking Aft



Stairway



Stairway



STAIRWAY



Looking Forward



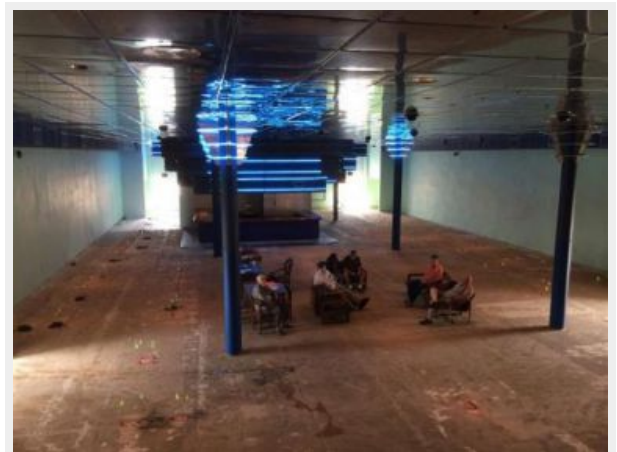
Looking on Harvey Canal



Looking to Starboard Quarter



SALON - WITH PEOPLE



Looking Forward

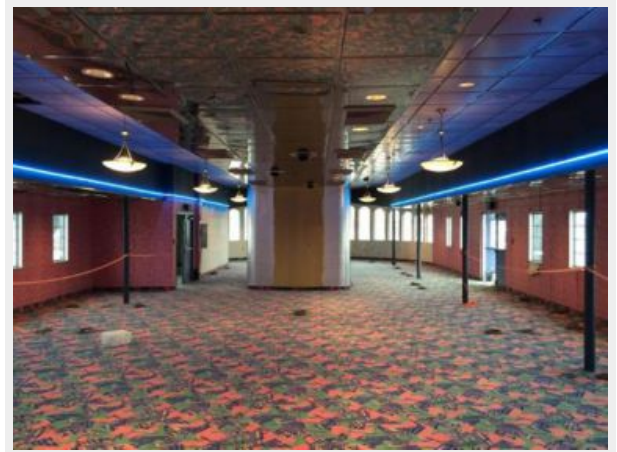


Looking Aft to Balcony

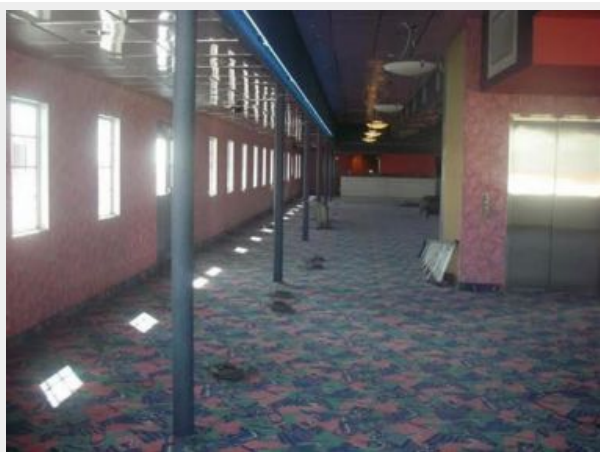


SALON

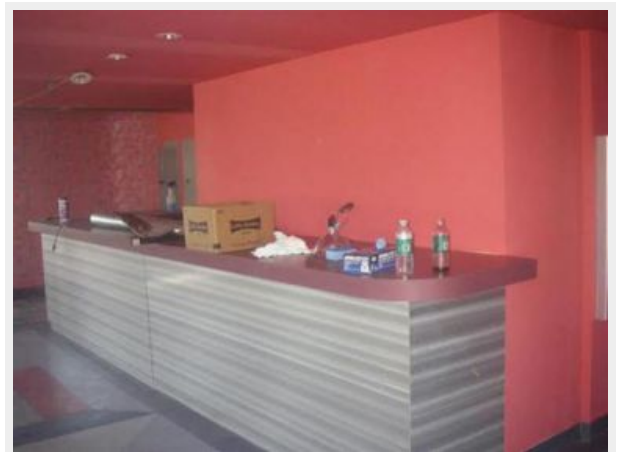
Panoramic View



SALON - SBD SIDE



Bar



75 KW - Auxilliary Generator



750 KW Generator



Tank Piping



Subpanels



Air Conditioning Space



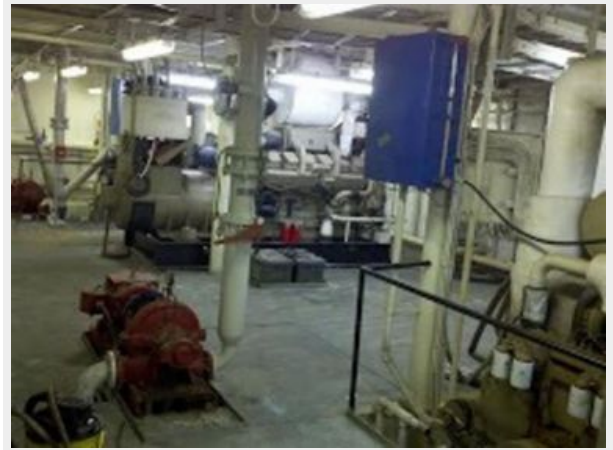
Generator Switch Panel



Air Conditioning - Filter Room



Engine Room



Piping - Typical



Engine Room



CAT - T-38 - MAIN ENGINES



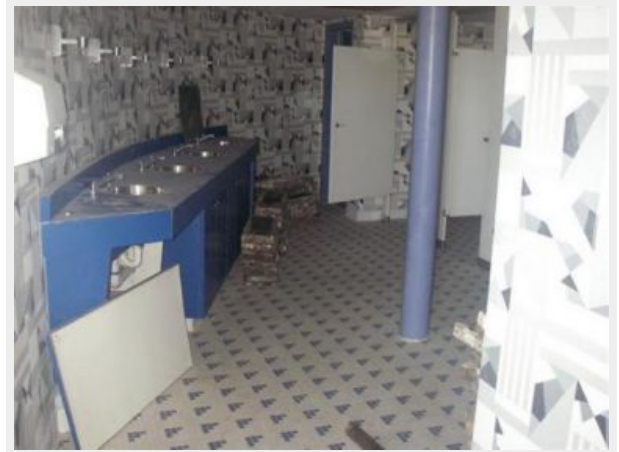
Engine Room



Bath Room



Bath Room



Video Recording Panel



"Hot & Cold Boxes"



Refrigeration



CONTACTS

Andrey Shestakov, leading yacht broker of the sales department of Shestakov Yacht Sales Inc. Shestakov Yacht Sales Inc., the official representative of the Miami/Fort Lauderdale FL headquarters.

Contact details

Email: andrey@shestakovyachtsales.com

Web: shestakovyachtsales.com/en/

Telephones

USA: +1(954)274-4435

Office hours

Monday – Saturday: **9:00 - 21:00** EDT

Sunday: **closed**

Address



Harbour Towne Marina, 850 NE 3rd St,
STE 213, Dania, FL 33004