

VITECH 60 — VITECH



Builder: [VITECH](#)

Year Built: 2005

Model: Motor Yacht

Price: PRICE ON APPLICATION

Location: Thailand

LOA: 62' 3" (18.97m)

Beam: 15' 7" (4.75m)

Max Draft: 1' 6" (0.46m)

Max Speed: 26 Kts. (30 MPH)

Our experienced yacht broker, Andrey Shestakov, will help you choose and buy a yacht that best suits your needs **Vitech 60 — VITECH** from our catalogue. Presently, at Shestakov Yacht Sales Inc., we have a wide variety of yachts available on our sale's list. We also work in close contact with all the big yacht manufacturers from all over the world.

If you would like to buy a yacht **Vitech 60 — VITECH** or would like help answering any questions concerning purchasing, selling or chartering a yacht, please call **+1(954)274-4435**

TABLE OF CONTENTS

TABLE OF CONTENTS	2
SPECIFICATIONS	3
Overview	3
Basic Information	3
Dimensions	3
Speed, Capacities and Weight	3
Accommodations	3
Hull and Deck Information	4
Engine Information	4
PHOTOS	5
CONTACTS	8
Contact details	8
Telephones	8
Office hours	8
Address	8

SPECIFICATIONS

Overview

This versatile motor yacht can be enjoyed as a dive station, sports fisher and a pleasure craft. With a huge cockpit perfect for entertaining, relaxing and enjoying the ocean, she is perfect for this area of the world. She has a good level of specification with A/C through, home cinema system, generator, dive compressor, electric toilets and a full navigation package. If you are looking for a yacht to serve many roles then this could be it! Viewing is highly recommended to appreciate the great condition she is presented in.

Basic Information

Category: Motor Yacht

Model Year: 2005

Year Built: 2005

Country: Thailand

Dimensions

LOA: 62' 3" (18.97m)

Beam: 15' 7" (4.75m)

Max Draft: 1' 6" (0.46m)

Speed, Capacities and Weight

Max Speed: 26 Kts. (30 MPH)

Water Capacity: 105.6688208 Gallons

Fuel Capacity: 211.3376416 Gallons

Accommodations

Total Cabins: 2

Total Berths: 4

Sleeps: 4

Total Heads: 2

Crew Berths: 2

Crew Sleeps: 2

Crew Heads: 1

Hull and Deck Information

Hull Material: GRP

Hull Color: White

Engine Information

Engines: 2

Manufacturer: Caterpillar

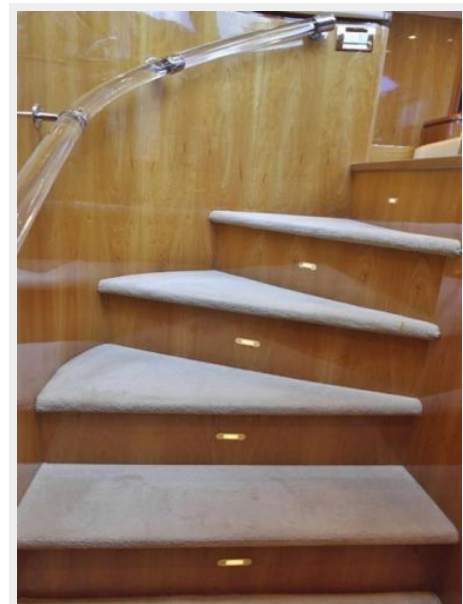
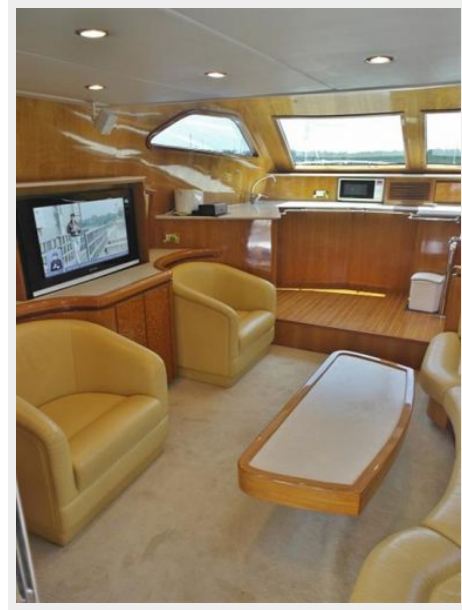
Model: C9E

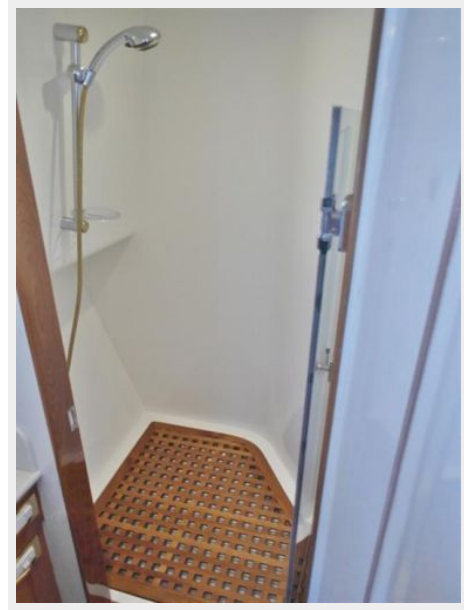
Engine Type: Inboard

Fuel Type: Diesel

PHOTOS







CONTACTS

Andrey Shestakov, leading yacht broker of the sales department of Shestakov Yacht Sales Inc. Shestakov Yacht Sales Inc., the official representative of the Miami/Fort Lauderdale FL headquarters.

Contact details

Email: andrey@shestakovyachtsales.com

Web: shestakovyachtsales.com/en/

Telephones

USA: +1(954)274-4435

Office hours

Monday – Saturday: **9:00 - 21:00** EDT

Sunday: **closed**

Address



Harbour Towne Marina, 850 NE 3rd St,
STE 213, Dania, FL 33004