

PELLUCIDAR — MOODY



Builder: MOODY

LOA: 47' 0" (14.33m)

Year Built: 2002

Model: Center Console

Price: PRICE ON APPLICATION

Location: United States

Our experienced yacht broker, Andrey Shestakov, will help you choose and buy a yacht that best suits your needs **Pellucidar — MOODY** from our catalogue. Presently, at Shestakov Yacht Sales Inc., we have a wide variety of yachts available on our sale's list. We also work in close contact with all the big yacht manufacturers from all over the world.

If you would like to buy a yacht **Pellucidar — MOODY** or would like help answering any questions concerning purchasing, selling or chartering a yacht, please call **+1(954)274-4435**

TABLE OF CONTENTS

TABLE OF CONTENTS	2
SPECIFICATIONS	3
Overview	3
Basic Information	3
Dimensions	3
Accommodations	3
Hull and Deck Information	3
Engine Information	3
DETAILED INFORMATION	4
Electronics	4
Cabin and Galley	4
Systems	4
Steering	5
Hull and Underwater Gear	5
Ground Tackel	5
Tender	5
Sails and Rigging	5
Safety & Fire Protection	6
Exclusions	6
Disclaimer	6
PHOTOS	7
CONTACTS	9
Contact details	9
Telephones	9
Office hours	9
Address	9

SPECIFICATIONS

Overview

Center cockpit diesel auxiliary master head sloop. Layout: The forward stateroom has an island queen berth followed by a head with handheld shower. Next aft is a guest stateroom with stacked bunks. The salon with settee and table follows. The galley is to starboard and the navigation station is to port. Next aft is the engine compartment below the companionway steps. The master stateroom is aft with head with shower. Steps lead up the companionway to the cockpit with fiberglass dodger/enclosure.

Basic Information

Category: Center Console

Model Year: 2002

Year Built: 2002

Country: United States

Dimensions

LOA: 47' 0" (14.33m)

Accommodations

Total Cabins: 2

Hull and Deck Information

Hull Material: Fiberglass

Engine Information

Engines: 1

Manufacturer: Yanmar

DETAILED INFORMATION

Electronics

- Whitlock-Polaris magnetic at steering pedestal compass
- Standard-Horizon Intrepid VHF Radio
- Raytheon RN300 GPS
- Raymarine RL70C Radar
- B&G Network Wind Speed/Wind Point
- Windex at masthead Wind Point
- B&G Network Quad Depth/Knot Meter

Cabin and Galley

- Dometic SMEV 4-burner LPG range with oven
- Cold Plate Refrigeration
- Magic Chef Microwave
- Webasto Diesel Fired Furnace- disconnected; removed. Boiler available for hydronic heat. (not installed).
- Sony SR-C5300R
- Polaroid LCD TV
- Weems and Plath Barometer and Clock
- 1 Jabsco manual head, holding tanks- one Vac-U flush in the forward head
- Mast: Deck stepped anodize aluminum- Keel stepped
- Bilge Pumps: 12 VDC automatic and Whale manual- New second bilge pump; s.b. 2X12 VDC automatic

Systems

- 12 VDC pressure system water pump
- 115 VAC and engine heat exchange water heater
- Aqua Fresh Water Makers LTD, 31.95 hrs
- 2 Jabsco manual heads, holding tanks
- 2 12 VDC battery banks, and generator battery
- Electrical Systems:

AC: 110 VAC system, branch circuit breakers, GFCI protected outlets

DC: 12 VDC system, battery switches, Link 10 monitor, branch circuits, Balmar alternator

AC Generator: Mastervolt Whisper 6000, 6KW, 84.12 hrs

Inverter: Xantrex ProSine 2.0, 2.0 KW

Propane System: Two 20lb aluminum propane tanks, pressure gauge, rubber hose with machine swage fittings, pressure gauge, Cruz Pro GD30 solenoid controller/sniffer

Fuel Systems: Single fuel tank, neoprene fuel lines, remote fuel filter and on-engine filter

Steering

B&G Network Auto Pilot

Hull and Underwater Gear

- Stainless steel Propeller Shaft
- Lever ball valves, engine raw water strainer Sea Cocks/Strainers
- Sliepner Side Power 12VDC Bow Thruster

Ground Tackel

- Bruce claw type, 30kg Anchor
- 250 feet of 3/8 inch chain Rode, 150 feet of 5/8 inch line
- Lewmar 12 VDC Windlass
- Four Fenders
- Four Mooring Lines

Tender

- 10' RIB stored ashore Dinghy
- Honda 9.9 HP Outboard Motor (BABJ10056527)
- Transom mounted Kevlar boom Davit

Sails and Rigging

Mast: Deck stepped anodized aluminum

Rig Type: Masthead cutter

Furling Gear: Furlex 400S headsail, Furlex 300S staysail

Standing Rigging: 1X19 stainless steel wire, machine swage fittings

Vang: Selden Rodkicker

Running Rigging

Winches: Lewmar

Sail Inventory: Main and Jib and staysail-Vectran sails

Spinnaker Pole MOB/Throw able Device: LifeSling Honda 9.9 HP Outboard Motor (BABJ10056527)

Safety & Fire Protection

- PFD's: Yes
- MOB/Throw able Device: LifeSling
- Flare Kits: Yes
- Fire Extinguishers: 2 ABC-I, (1) BC-I; gauges in green
- Engine Room Halon: Yes
- Sound Devices: Portable air horn
- Navigation Lights: Yes
- Pollution Placards: Posted
- Bilge Pumps: 12 VDC automatic and Whale manual

Exclusions

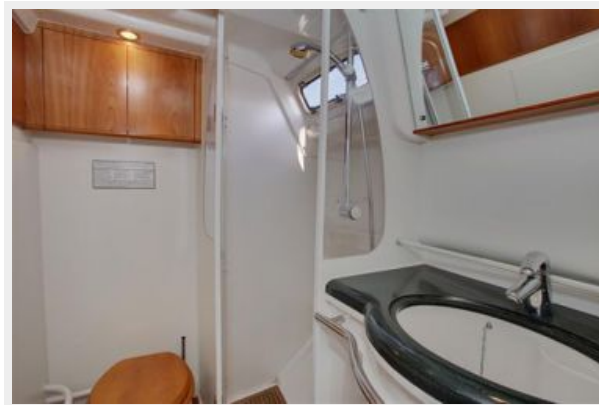
Owner's personal belongings.

Disclaimer

The Company offers the details of this vessel or yacht in good faith but cannot guarantee or warrant the accuracy of this information nor warrant the condition of the vessel. A buyer should instruct his representatives, agents, or his surveyors, to investigate such details as the buyer desires validated. This vessel or yacht is offered subject to prior sale, price change, or withdrawal without notice.

PHOTOS





CONTACTS

Andrey Shestakov, leading yacht broker of the sales department of Shestakov Yacht Sales Inc. Shestakov Yacht Sales Inc., the official representative of the Miami/Fort Lauderdale FL headquarters.

Contact details

Email: andrey@shestakovyachtsales.com

Web: shestakovyachtsales.com/en/

Telephones

USA: +1(954)274-4435

Office hours

Monday – Saturday: **9:00 - 21:00** EDT

Sunday: **closed**

Address



Harbour Towne Marina, 850 NE 3rd St,
STE 213, Dania, FL 33004