

## ABSOLUTE — TRUMPY



**Builder:** TRUMPY

**Year Built:** 1970

**Model:** Motor Yacht

**Price:** PRICE ON APPLICATION

**Location:** United States

**LOA:** 62' 7" (19.08m)

**Beam:** 15' 8" (4.78m)

**Max Draft:** 4' 0" (1.22m)

**Cruise Speed:** 17 Kts. (20 MPH)

**Max Speed:** 21 Kts. (24 MPH)

Our experienced yacht broker, Andrey Shestakov, will help you choose and buy a yacht that best suits your needs **ABSOLUTE — TRUMPY** from our catalogue. Presently, at Shestakov Yacht Sales Inc., we have a wide variety of yachts available on our sale's list. We also work in close contact with all the big yacht manufacturers from all over the world.

If you would like to buy a yacht **ABSOLUTE — TRUMPY** or would like help answering any questions concerning purchasing, selling or chartering a yacht, please call **+1(954)274-4435**

# TABLE OF CONTENTS

---

TABLE OF CONTENTS	2
SPECIFICATIONS	5
Overview	5
Basic Information	5
Dimensions	5
Speed, Capacities and Weight	5
Accommodations	6
Hull and Deck Information	6
Engine Information	6
DETAILED INFORMATION	7
Overview	7
Accommodations	7
Wheelhouse	7
Galley	7
Salon	7
Master Cabin	8
En-suite Master Head	8
Guest Cabin	8
Guest Head/ Day Head	8
Crew/Guest Accommodation	8
Hull and Deck Equipment	9
Machinery and Electrical	9
Electronics and Navigation	10
Exclusions	10
Exclusions	10
Disclaimer	10
PHOTOS	11
Salon	11

Salon Aft	11
Galley to Port	11
Galley to Stbd	11
Wheelhouse to Port	11
Wheelhouse to Stbd	11
Master Fwd	12
Master Aft	12
Master w/ Head	12
Guest to Stbd	12
Guest to Port	13
Guest Fwd Port	13
Guest Head	13
Crew/Guest to Port	13
Crew/Guest to Stbd	14
Crew/Guest Fwd Stbd	14
Crew/Guest Fwd port	14
Engine Room Fwd Port	14
Engine Room Fwd Stbd	15
Aft Deck	15
Foredeck From Above	15
Aft Deck Fwd	15
Foredeck Looking Aft	16
Port Side Deck	16
Stbd Side Deck	16
Profile	16
Profile	17
Profile	17
Running	17
Running	17

---

Running	17
Layout	17
CONTACTS	18
Contact details	18
Telephones	18
Office hours	18
Address	18

---

# SPECIFICATIONS

---

## Overview

---

ABSOLUTE, Contract #440, is the eight to the last Trumpy built. Commissioned by Mr. Bayard Sharp of the DuPont Dynasty, she was named originally named GALPO (a nickname for his mother), then later BROADVIEW by her 2nd owner, and finally ABSOLUTE by her 3rd. Her present owner, the yachts 5th, has continued the first rate custodianship of this very fortunate yacht caring for her in first class fashion. Those inspecting her will find her in excellent mechanical and cosmetic condition, with entirely updated systems, and wanting for basically nothing but a new owner's personal touches.

## Basic Information

---

**Category:** Motor Yacht

**Model Year:** 1970

**Year Built:** 1970

**Country:** United States

## Dimensions

---

**LOA:** 62' 7" (19.08m)

**LWL:** 58' 0" (17.68m)

**Beam:** 15' 8" (4.78m)

**Max Draft:** 4' 0" (1.22m)

**Clearance:** 19' 0" (5.79m)

## Speed, Capacities and Weight

---

**Cruise Speed:** 17 Kts. (20 MPH)

**Max Speed:** 21 Kts. (24 MPH)

**Displacement:** 81571.03694 Pounds

**Water Capacity:** 400 Gallons

**Holding Tank:** 125 Gallons

**Fuel Capacity:** 700 Gallons

---

## Accommodations

---

**Total Cabins:** 3

**Total Berths:** 5

**Sleeps:** 6

**Total Heads:** 2

**Crew Cabin:** 1

**Crew Berths:** 1

**Crew Sleeps:** 2

**Crew Heads:** 1

---

## Hull and Deck Information

---

**Hull Material:** Wood

**Deck Material:** Fiberglass

**Hull Color:** White

**Hull Finish:** Aluminum

**Hull Designer:** Fred Geiger

**Exterior Designer:** Fred Geiger

**Interior Designer:** Fred Geiger

---

## Engine Information

---

**Engines:** 2

**Manufacturer:** Detroit Diesel

**Model:** 8V92TI Commercially Rated

---

# DETAILED INFORMATION

---

## Overview

---

ABSOLUTE, Contract #440, is the eight to the last Trumpy built. Commissioned by Mr. Bayard Sharp of the DuPont Dynasty, she was named originally named GALPO (a nickname for his mother), then later BROADVIEW by her 2nd owner, and finally ABSOLUTE by her 3rd. Her present owner, the yachts 5th, has continued the first rate custodianship of this very fortunate yacht caring for her in first class fashion. Those inspecting her will find her in excellent mechanical and cosmetic condition, with entirely updated systems, and wanting for basically nothing but a new owner's personal touches.

## Accommodations

---

ABSOLUTE features John Trumpy's most desirable arraignment plan. Wheelhouse forward, followed by a full beam galley, salon, and aft deck that can be open to the breeze or enclosed and climate controlled. Crew area is forward on the lower level followed by the engine room, full beam owner's cabin with en-suite head and centerline queen berth, and finally a full beam guest cabin and head.

## Wheelhouse

---

Port and Starboard wing doors Vinyl wood flooring (2010) Lane wool bound area carpet (2010) Large helm bench on aft bulkhead Opening center window

## Galley

---

GE Profile Advantium 7000w combination oven / microwave (2010) GE exterior venting exhaust fan hood (2010) GE Profile electric 4 burner glass cooktop (2010) GE dishwasher (2010) Broan garbage compactor (2010) Kitchen Aid full size refrigerator / freezer Nutone kitchen center w/various attachments Cuisinart convection toaster oven (2012) Cuisinart coffee grinder (2013) Large sink with garbage disposal and spray handle faucet Synthetic vinyl wood flooring (2010) Small bound Lane wool area carpet (2010) Overhead "butterfly" hatch w/screen Large port and starboard windows w/curtains (3) 110v Outlets Very good storage for food stuffs, plates, glasses, etc... Access to the Wheelhouse via a lockable door with screen Access to the salon via a swing door Large overhead butterfly hatch w/screen

## Salon

---

Beautifully finished in Walnut L-shaped built in sofa w/storage under (new cushions and upholstery 2007) Beige curtains (2007) (2) Barrel back swivel chairs (new upholstery 2007) (2)

Opening side windows to allow for fresh air Easy chair (new upholstery 2007) Bamboo barrel back secretary chair (new upholstery 2007) Small secretary on aft bulkhead (2) Swivel arm reading lamps Lamp table Trumpy high/low table Lane wool wall to wall carpet (2010) Aft deck door with screen

## Master Cabin

---

Custom full King centerline berth w/storage under (2011) replaced the original twin separate berths (2) Reading lamps Port and starboard chest of drawers Large bulkhead mounted mirror (4) Opening ports w/wooden shutters and screens (2) Small circular hull ports (3) Large hanging lockers Fresh wall paper (2010) Lane wool wall to wall carpet (2010) (4) 110v outlets

## En-suite Master Head

---

Large stall shower Sink with vanity (2010) Galley Made electric flush head (rebuilt 2013) Large mirror Lighting (2010) Wallpaper (2010) Towel racks (2010) Vinyl wood flooring (2010) Opening port w/wooden shutter and screen 110v outlet wired direct to shore power 110v outlet wired to ships electrical system

## Guest Cabin

---

(2) Slightly oversized twin berths to port and starboard, mattress new (2010) (2) Reading lamps (4) Opening ports with wooden shutters and screens Large chest of drawers Large aft bulkhead mounted mirror Hanging locker Lane wool wall to wall carpet (2010) Wall paper (2010) (3) 110v outlets Smoke/fire detector

## Guest Head/ Day Head

---

Access from Guest Cabin and lower foyer Large stall shower Sink with vanity (2010) Galley Made electric flush head (rebuilt 2013) Large mirror Lighting (2010) Wallpaper (2010) Towel racks (2010) Vinyl wood flooring (2010) Opening port w/wooden shutter and screen 110v outlet wired direct to shore power 110v outlet wired to ships electrical system

## Crew/Guest Accommodation

---

En-suite head forward w/access to anchor locker Raritan electric head (rebuilt 2012) Wash basin w/vanity (2) Opening ports Twin size upper and lower berths w/reading lamps Overhead hatch access/ventilation hatch w/screen Great locker and drawer storage (2) Large hanging lockers (8) Opening ports Small dinette with storage under. Kariba clothes washer/dryer Washbasin and laundry work area with great storage Insta Hot water spigot (2012) Food saver Vacuum bagger (2012) Vinyl walnut wood flooring (2010) Custom fitted and bound Lane wool carpeting (2010)



Overhead storage for charts Smoke/fire detector (3) Fire extinguishers (5) 110v outlets  
Companionway ladder access to the wheelhouse Access to engine room

## Hull and Deck Equipment

Fiberglass covered painted Matterhorn White side decks, bow, and boat deck (freshly painted 2014) Fully enclosed aft deck w/wing doors, isinglass enclosure, and fitted all weather carpet Original Trumpy aft bench seat w/access to aft lazarette under (new cushions 2007) Small bench seat w/lockable storage under (new cushion 2007) Aft deck overhead replaced (2006) Aft deck roof mounted air-conditioner (power disconnected) Custom aft deck high/low table (2) Aft deck wood and wicker arm chairs Buffet/Bar area w/sink, icemaker and storage Mast on roof/boat deck w/owner absent and meal light 600lb davit for lifting and lowering a tender (fully serviced 2013) Lewmar polished stainless BRUCE 66lb anchor w/600' of stainless chain Danforth anchor with 200' of 3/4" anchor rhode Custom polished stainless anchor roller and sprit Ideal windlass w/deck control fully rebuilt (2011) Varnish on the entire vessel is in near perfect shape (2014) Fresh water wash-down spigot on foredeck for anchor and rooftop for tender Assorted fenders and lines (2) 50 Amp shore power points (port and starboard sides (2) 50 Amp 50' long shore power cords (1) 30 Amp 20' Long shore power cord 30 Amp to 50 Amp "Y" connector (12+) Adult life Jackets, 4 of them original 1969 Kapoc Trumpy Jackets (2) Children's life jackets (2) Spare 4-blade props (balanced and tuned 2014) All USCG required flairs, safety package, etc... Emergency tiller Boat hook Ships bell Teak folding boarding/swim ladder that reaches well below the water line 6 tread adjustable Marquipt stars Hull is constructed of double planked Mahogany (3/4" outer 3/8" inner) with 5200 between 2/3's of the bottom replaced and entirely refastened (2006) All through hull valves replaced (2006/2007) Stuffing boxes packed w/dripless packing (2013) Shafts, Cutlass and Cooper bearings replaced (2013) (2) Hobe Kayaks with sail rigs and foot peddle attachments (2) Varnished boat hooks

## Machinery and Electrical

(2) 1990 Detroit Diesel 8V92TI 550hp engines w/ commercial rating for 10,000hrs (1248hrs 6/2014) All hoses on main engines and generator replaced within last 5 years (2) Alyson Heavy Case 2 to 1 reduction transmissions Walker AirSeps installed Glendenning engine synchronizer 20KW Northern Lights Generator (2351hrs 6/2014) Generator exhaust system from wet elbow to through hull replaced (2013) RACOR Fuel Filters for Engine and Generator Engine room make up air blower Engine and transmission oil and fluid change system Vosper stabilizers fins upgraded to Westmar electronic gyro and control head (2011) Stabilizer hydraulic system and all hoses replaced (2011) Air Compressor Sea Ranger generator battery charger (16) 2v Sun Extender deep cycle batteries to make up the 32v bank (2010) (2) 3500w Outback Inverters in parallel for 7000w total (2010) (1) 12v deep cycle battery for Generator (2010) Entire DC electrical system, cables, switches, etc... new (2010) New 12v and 24v distribution panels (2008) 110/220 Volt AC system / 12/32 Volt DC system 110V Florescent Engine Room Lighting 110V Bilge Pump (4) Automatic Jabsco Bilge Pumps with bilge alarms Jabsco belt driven AC bilge pump w/3 manifolds or pickups Compressed Air Tank Freshwater Accumulator tank 120v and

12v Fresh water pumps (2009) (5) Cruisair AC condensers in engine room and (1) in the lazarette Stainless hot water heater (2006) Work bench w/vice, grinder, etc... Engine room 4.5hp wall mounted shop vac All hull grounding and bonding upgraded and replaced (2007) Galvanic Isolator Hydraulic steering pump and all hoses replaced (2012) Everstar entire yacht central vac system (2011) Craftsman tool chest w/assorted tools Automatic engine room CO2 fire extinguishing system

---

## Electronics and Navigation

---

Dual lever Morse controls Ships Bell (3) Pneumatic windshield wipers (rebuilt 2013) Ships air horns USCG approved navigation lights 6 Spoke aluminum Trumpy ships wheel All electronics run off their own separate and independent "communications battery bank" Outback battery load monitor Digital Yacht Nave Hub for Wi-Fi GPS w/AIS (2013) – (allows for wireless navigation on any charting software via computer, tablet, or smart phone) Furuno 72 mile radar ICOM IC-M602 VHF Robertson AP200x autopilot Wesmar GPS1000 gyro controller Furuno GPS navigator B&G Focus speed/depth/trip/temp log Standard Horizon LH10 loud hailer Sea Ranger SR5561 VHF Danforth Constellation binnacle compass Glendenning engine synchronizer Wiper controls and fresh water wash (2) Overhead spotlights w/manual direction controls Overhead directional loudhailer

---

## Exclusions

---

The tender that may or may not be aboard at time of viewing.

---

## Exclusions

---

Owner's personal belongings.

---

## Disclaimer

---

The Company offers the details of this vessel or yacht in good faith but cannot guarantee or warrant the accuracy of this information nor warrant the condition of the vessel. A buyer should instruct his representatives, agents, or his surveyors, to investigate such details as the buyer desires validated. This vessel or yacht is offered subject to prior sale, price change, or withdrawal without notice.

# PHOTOS

**Salon**



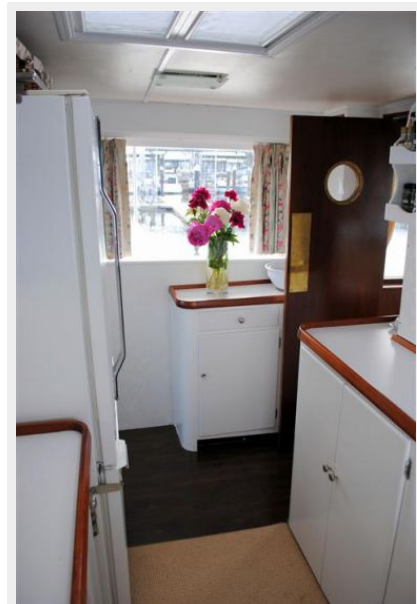
**Salon Aft**



**Galley to Port**



**Galley to Stbd**



**Wheelhouse to Port**



**Wheelhouse to Stbd**



**Master Fwd**



**Master Aft**



**Master w/ Head**



**Guest to Stbd**





**Guest to Port**



**Guest Fwd Port**



**Guest Head**



**Crew/Guest to Port**



**Crew/Guest to Stbd**



**Crew/Guest Fwd Stbd**



**Crew/Guest Fwd port**



**Engine Room Fwd Port**



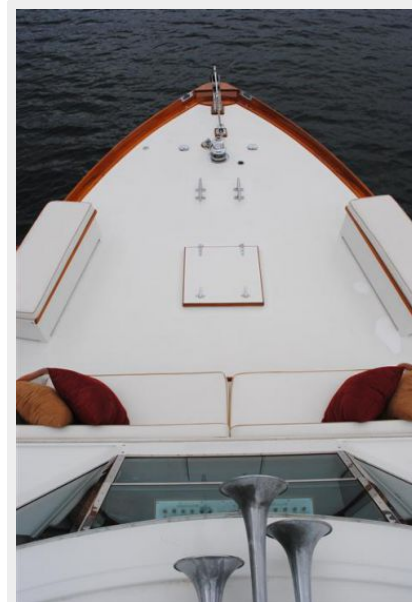
**Engine Room Fwd Stbd**



**Aft Deck**



**Foredeck From Above**



**Aft Deck Fwd**





**Foredeck Looking Aft**



**Port Side Deck**



**Stbd Side Deck**



**Profile**





**Profile**



**Profile**



**Running**



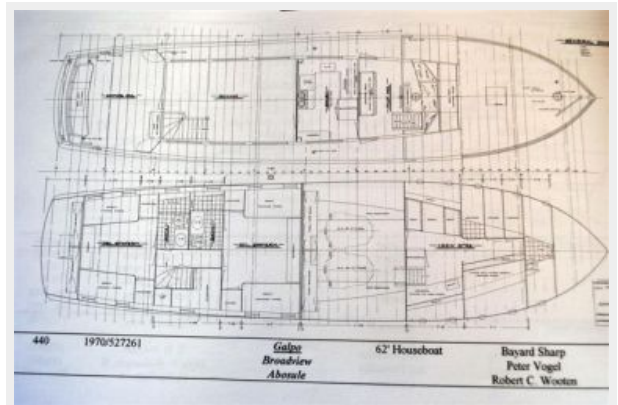
**Running**



**Running**



**Layout**



# CONTACTS

---

Andrey Shestakov, leading yacht broker of the sales department of Shestakov Yacht Sales Inc. Shestakov Yacht Sales Inc., the official representative of the Miami/Fort Lauderdale FL headquarters.

## Contact details

---

Email: [andrey@shestakovyachtsales.com](mailto:andrey@shestakovyachtsales.com)

Web: [shestakovyachtsales.com/en/](http://shestakovyachtsales.com/en/)

## Telephones

---

USA: +1(954)274-4435

## Office hours

---

Monday – Saturday: **9:00 - 21:00** EDT

Sunday: **closed**

## Address

---



Harbour Towne Marina, 850 NE 3rd St,  
STE 213, Dania, FL 33004