

ANGELIKA — AZIMUT



Судостроитель: [AZIMUT](#)

Год постройки: 2010

Модель: Моторная яхта

Цена: **ЦЕНА ЯХТЫ ПО ЗАПРОСУ**

Местонахождение: United States

Длина общая: 95' 0" (28.96m)

Ширина: 22' 6" (6.86m)

Макс. осадка: 6' 1" (1.85m)

Крейс. скорость: 18 Kts. (21 MPH)

Макс. скорость: 24 Kts. (28 MPH)

Купить **ANGELIKA — AZIMUT** а также выбрать подходящую вам яхту из нашего каталога яхт вам поможет опытный яхтенный брокер Андрей Шестаков. На сегодняшний день компания **Shestakov Yacht Sales Inc.** имеет большое количество яхт в собственном списке продаж, а также тесно сотрудничает со всеми крупными яхтенными производителями по всему миру.

Для того чтобы купить яхту **ANGELIKA — AZIMUT** а также проконсультироваться по любому вопросу связанному с покупкой, продажей, чартером яхт позвоните по телефону **+7(918)465-66-44**.

ОГЛАВЛЕНИЕ

ОГЛАВЛЕНИЕ	2
ХАРАКТЕРИСТИКИ	4
Обзор	4
Основная информация	4
Размеры	4
Скорость, вместимость и масса	4
Размещение	5
Корпус и палуба	5
Информация о двигателе	5
ПОДРОБНОЕ ОПИСАНИЕ	6
Details of the Hull	6
Mooring	6
Engines & Steering	6
Fly Bridge	7
Transom	8
Cockpit	8
Sides	9
Bow Features	9
Salon/ Dining Area	10
Galley Features	11
Wheelhouse Equipment	11
Powder Room	12
Master Cabin	13
Bow Master Head	13
Guest Head	14
VIP Cabin	15
VIP Head	15
Starboard Crew Cabin	16

Captain's Cabin (Portside)	16
Crew Head	17
Crew Mess	17
Generators	18
Shore Power	18
Batteries	18
Lighting System & Outlets	19
Electronics	19
Communication System	20
Entertainment System	20
Fire & Alarm System	21
Fuel System	21
Fresh Water System	22
Black & Grey Water Tanks	22
Sea Water System	23
Electro-Hydraulic System	23
Air Conditioning, Venting & Extractor System	23
Insulation	24
Decor	24
Disclaimer	27
Исключения	27
Отказ от ответственности	27
ФОТОГРАФИИ	28
КОНТАКТЫ	41
Контактная информация	41
Телефоны	41
Время работы	41
Адрес	41

ХАРАКТЕРИСТИКИ

Обзор

Experienced captain been with "Angelika" since the build and she has been well maintained with an open check boat since new. One of the only US SPEC 95's in the US market now. She is truly a must see !!!!

CAT C32A main engines, Dual Generators, Zero speed stabilizers, and hydraulic bow and Stern thrusters. Tons of options and a long list of upgrades.

She is currently enroute to New England for the summer and available to see by appointment.

Основная информация

Тип судна: Моторная яхта	Подкатегория: Flybridge
Модельный год: 2010	Год постройки: 2010
Страна: United States	Открытая палуба мостика: Да

Размеры

Длина общая: 95' 0" (28.96m)	Ширина: 22' 6" (6.86m)
Макс. осадка: 6' 1" (1.85m)	

Скорость, вместимость и масса

Крейс. скорость: 18 Kts. (21 MPH)	Макс. скорость: 24 Kts. (28 MPH)
Водоизмещение: 101 Pounds	Вместимость воды: 491 Gallons
Объем топливного бака: 3044 Gallons	

Размещение

Всего кают: 4

Всего коек: 3

Всего ком. состава: 4

Корпус и палуба

Материал корпуса: Fiberglass

Информация о двигателе

Двигатели: 2

Производитель: Caterpillar

Модель: C-32A

Тип топлива: Diesel

ПОДРОБНОЕ ОПИСАНИЕ

Details of the Hull

- The structural project of the hull has been carried out according to the High Speed Craft Classification and has been approved by R.I.N.A.
- Vinylester Resin is used for the first coats of the hand laid-up lamination below the water line. This kind of resin is extremely effective in preventing osmosis thanks to its chemical and physical characteristics.
- Worldwide acknowledge quality isophthalic resin is used for all the stages of the hand laid-up lamination process.
- High quality PVC with outstanding mechanical peculiarities is used for hullsides, main deck and superstructure lamination with sandwich.
- Engine room- collision, aft and bow master cabin bulkheads are in laminated sandwich. All other internal bulkheads are built with advanced composite materials.
- Keel is deep V type with 9,6 AFT deadrise.

Mooring

- Two 105kg Posidonia Anchors in Steel
- 500 ft.Steel Chains (13mm of diameter)
- Built-in Stainless Steel Bow Protections
- Two 4000W, 220V, Anchor Winches on Bow
- Two 2200W, 220V, Mooring Winches in AFT Cockpit
- 8 Cleats in Total (two on AFT, two on Bow and two at Midship)
- Pair of pop-up cleats on the Swim Platform

Engines & Steering

Main Engines: CAT C32 ACERT - Diesel Engine Twelve V Cylinders- 1343kw @ 2300 RPM- Stroke 162 mm - Bore: 145 mm. Hour Meter on Engines. Reversing-Reduction Groups: ZF 3055, Reduction Rate 2,750:1 Propulsion: V DRIVE with Universal Joint Shaft: Marinox 17 Steel Supported by Brass Stands and Stern Tubes. Tides Shaft Seals Propellers: Four Blades, 1150 mm of Diameter, NiBrAl Alloy, Designed and Built to Optimize Hull Performances and to Guarantee Good Comfort during Sailing Rudders: AISI 316 Steel with 0,50 sqm of Surface to Ensure Easy Maneuvers. Rudderholes and Pole of the Rudders in Marinox 17. Bars in Brass and Yoke in Carbon Steel Intruder: AISI 316 FIXED

UPGRADE: Bow Thruster: Hydraulic System 25kw (33,5 hp) UPGRADE: Stern Thruster : Hydraulic System

- Make Up Air

- Double Racor Filters for Main Engines
- Alarm System with Five Volumetric Sensors

Fly Bridge

- Install Hard Top
- UPGRADE: Custom Isinglass enclosure, wraps from port side of arch to starboard side with 4 zippered windows
- UPGRADE: Crane on Flybridge
- UPGRADE: Zodiac Yachtline 420DL tender mounted on aft deck (removable chocks)
- Three Swivelling Stools with Backrest and Footrest, placed next to the Bar Cabinet,
- Flybridge Table with Central Removable Leaf
- UPGRADE: BBQ as per 95-12
- UPGRADE: Jacuzzi Tub
- Jacuzzi Cover in Teak
- Flybridge Floor in Teak
- Do Not Install Hi-Lo Mechanism for the Table on Bow Starboard Side, with Sunpad on Top as Previously Requested (credit for what contractually agreed)
- Second Radar Arch
- Pair of Spotlights Recessed in the Fiberglass on AFT of the Flybridge
- Remote Controls for Engines and Thrusters
- UPGRADE: Manouvering Joystick on Both Helms
- UPGRADE: Cradle for Tender- removable
- Dual 6 person offshore
- Top of the Bar Cabinet and the Fridge Cabinet in Varnished Teak (Matte Finishing)
- Icemaker in the Bar Cabinet
- UPGRADE: Three Cameras connected to a Monitor in Wheelhouse and Flybridge and Installed in the Following Positions: - One fixed in AFT Cockpit - One Pivoting and Zoom in Engines Room - One Pivoting and Zoom on Extreme AFT for Docking Purposes
- The wide flybridge is accessible through the external staircase in the aft cockpit with teak steps
- Windscreen in plexiglass and steel
- Pilot console includes: -Steering Wheel -Main Engines Controls -Main Engines and Reversing Gear Gauges -Instruments for Navigation -Bow Thruster Control -Stern Thruster Control -Forward Anchor Winch Control -Navigation Lights Control -Horn Control -Search Light Control -Fire Extinguisher Pump Control -Trim Tabs Control -Manouvering Intercom
- Helm Settee in Fiberglass with Cushions on Starboardside, with 3 seats, backrest and storage underneath.
- Bar unit on portside with fridge and storage, working top in granite.
- Bar unit on portside with sink, and storage, bar top and working top. Bar Top in Teak and Working Top in Granite.
- L-Shaped Sofa Area Beside the Console Station with Little Table in Teak.
- Storage unit in fiberglass on starboard side, between the bow sofa and the dining area.

- C Shaped Sofa on Starboard with Storage Underneath.
- One Table in Teak for 10 people starboardside, with Central Removable Extension.
- Three Teak Folding Chairs.
- Tub Installed Inside a Fiberglass Cabinet with Access Step in Teak.
- Sunbathing Area Beside the Tub.
- Fiberglass roll bar includes: -Navigation Lights -Antennas -Horn -Search Light -Two Stainless Steel "95" Logos
- Searchlight (Jabsco 60080-146SL) placed on Bow of the Windshield.
- Draining Holes.
- Antiskid Flooring.
- U-Shaped Stainless Steel Handrails on Sides of the Flybridge and around the Area of the Staircase to Main Deck.
- Watertight Spotlights on the Roll Bar.
- Covers for the Sofas, Sunpads, Tables and Console.

Transom

- UPGRADE: Bauer Compressor with Scuba Diving Bottles Holder
- Two Underwater Lights under the Swim Platform
- Pair of pop-up Cleats on the Swim Platform
- Two U shaped Stainless Steel Removable Handrails on the Swim Platform
- Two Additional U shaped Stainless Steel Removable Handrails on the Swim Platform
- Teak on Swim Platform
- UPGRADE: Hydraulic Lifting Swim Platform with Max Capacity 1.100 kg
- Structural Staircases with Teak Steps on Both Sides of the Transom for Access to Swim Platform. Stainless Steel Handrail on the Internal Side of Each Staircase.
- Electro-Hydraulic Retractable Gangway in Stainless Steel and Teak on Transom, Starboard side.
- Water Shore Connection, Shower, Fresh Water Outlet on Transom.
- Shore Power Inlets, TV and Telephone Inlets Placed on Transom, Starboard side.
- Black Water Shore Discharge System on Starboard Side.
- Watertight Door to Access Lower Deck/Crew Quarters Placed in the Middle of Transom.
- Name of the Yacht and Port of Registry in Stainless Steel on Transom.

Cockpit

- Four Cleats each Side
- Gangway with Handrails on Both Sides
- Provide covers for all the External Tables. Covers to be Padded with Felt in the Inside
- Table to be Fixed, in Varnished Teak(matte finishing), with Compass Rose Inlay
- Provide Two Additional Folding Chairs (on top of the STD four)
- Curved Cabinet in AFT Cockpit with Fridge

- External Surface in 8 mm Thick Teak.
- C-Shaped Fiberglass Settee for 6 People, with Cushions.
- Cockpit Table in Teak with Two Stainless Steel Bases.
- Four Teak Folding Chairs.
- Fiberglass Bar Cabinet with Fridge and Sink.
- Salon Door in Tempered Glass and Stainless Steel Divided into Four Sections.
- Stainless Steel Handrail on Both Sides of the Settee.
- Control Panel for the Gangway and the Swim Platform, placed in the Handrail on Starboard side of the settee.
- Stainless Steel Handrail for the Staircase to the Flybridge.
- Two Stainless Steel Pillars to sustain the Flybridge Structure.
- Two Stainless Steel Gates to Access the Swim Platform.
- Fresh Water Inlets on Port and Starboard Side.
- Water light Halogen Lights on the Ceiling.
- Covers for the settee and the table.
- Drainage Holes.

Sides

- Azimut Logo with Lighting on the Side Wings per Azimut 70
- Azimut Logo in each sides of superstructure
- External Surface in 8mm thick teak
- Two fuel fills, one on each side of the superstructure
- Stainless Steel Handrail on Bulwark
- Howseholes in the Bulwark
- Mooring Hooks in the Bulwark
- Side Boarding Gates
- Rub Rail in Rubber and Stainless Steel on Hull Sides
- Watertight Halogen Lights on the Ceiling and Courtesy Lights
- Mirrored Windows in High Thickness Tempered Glass and Glued to the Superstructure without Metal Frames
- Three Watertight Doors Access to Galley on the Starboard Side of the Superstructure and to the Wheelhouse and Crew Quarters on the Port Side of the Superstructure

Bow Features

- UPGRADE: Bimini Top on Bow
- Chain Storage with Drainage.
- Chain Washer Through the Fire Extinguisher Hose.
- Sunbathing Cushions Area on the Superstructure.
- C-Shaped Sofa Integrated in the Superstructure, with Cushions and Backrest.
- Watertight Halogen Lights Recessed in the Fiberglass Placed in the Sofa area and in the

Bow Mooring Area.

- Two Teak Coffee Table with Stainless Steel Base
- Two Electric Wipers for Forward Windows.
- Black Mesh for the Front Wheelhouse Windscreen.
- Emergency Escape Hatch from the VIP Cabin.
- Covers for the Teak Tables, Sofa and Sunbathing Cushions.

Salon/ Dining Area

- Salon Cabinet Tops and Master Nightstands Tops to be in Marble Protruding above the Cabinet with Slightly Rounded Angles
- Wood: - Cherry wood, Matte Finishing as per Sample, with Vertical Graining - Lacquered Wood, Matte Finishing, for Salon and Cabins Ceilings - Lacquered Wood, Hi-Gloss Finishing, for Heads Ceilings - Lacquered Wood, Matte Finishing, for Galley Ceiling
- Salon Layout on Starboard Side: 2 Seat Sofas on AFT and Bow + 3 Seat Sofa on Starboard Side
- Salon Layout on Port Side: Custom Cabinet for Storage and for A/V Equipment in Lieu of STD Sofa (Difference vs STD)
- TV Cabinet to be Bigger than STD for a 50" TV Supplied by the Owner (including Hi- Lo Mechanism for TV)
- Inboard Side Bulkhead in Front of the Day Head Door to be totally in Cherry wood with Squares. Delete the Daytona Upholstered Panel
- STD Dining Table with Top in Glass with dark cherry inlay to match interior Cherry wood
- Provide 8 Chair, same as Poltrona Frau LIZ, without armrests, upholstered with Leather Penelope Oggi Anaconda Quartz art. 13002 (difference vs std chairs)
- Coffee Table as per Drawing, upholstered with Leather Penelope Oggi Anaconda Quartz art.1302 with Satin Nichel Trims and Top in Glass
- STD Bar Cabinet, without Footrest Bar (Credit for the Footrest)
- Storage for Glasses, Closed with Door, on the Bulkhead on Bow of the Bar Cabinet
- One 2-Seat Sofa on AFT Starboard Side
- One 3-Seat Sofa on Starboard Side
- One 2-Seat Sofa on Bow Starboard Side
- One Coffee Table
- Two Low Side Cabinets on Starboard Side
- Two Low Side Cabinets on Port Side
- Two Table Lamps
- Crockery, Glasses, China for 10 People
- Furniture Between Salon and Dinning Area, for Storage
- Dinning Table with Eight Dining Chairs
- Storage Cabinet on Starboard Side in the Dinning Area
- UPGRADE: Bar Unit with Marble Top Equipped with: Sink in S/S, Isotherm 49 Lt fridge and Isotherm 4 Kg/h Ice Maker
- Sliding Door to Access the Galley

- Sliding Door Dividing the Dining Area and the Wheelhouse
- Direct (halogen spotlights) and Indirect (Neon) Lights on Ceilings
- Curtains and Upholstery
- Furniture in Cherry Wood with Leather in Insert
- Ceiling in Fabric, Lacquered Wood and Cherry Wood
- Carpet Flooring
- Bar Top in Granite
- Cabinet Tops to be in Cherry Wood in Lieu of Leather in all areas except Salon Cabinets and Master Nightstands

Galley Features

- All Fiddles to be thinner than STD
- Trash Disposal in the Sink
- Wine Cooler with Glass Door
- Install 4 Drawers in Lieu of the Trash Compactor
- Back Splash Behind the Sink and the Cooking Top to be in Satin Stainless Steel (similar to the fridge) with 10 cm in Marble
- Install Stops for the Fridge and Wine Cooler Doors
- Install Basket for Storage in the AFT Corner
- Install Towels Holder Bar Removable under the Sink
- Install Potholder
- Side Access Door on the Starboard Side on the Superstructure
- Slide Access Door from the Dining Area
- Two Sliding Panels
- Working Top in Granite Equipped with Sink and Cooking Top on Port Side
- Working Top in Granite on Starboard Side
- Furniture with Storage and Oven on Port Side
- Furniture with Microwave, Dishwasher, Drawer and Bottle Holder on Starboard Side
- Fridge, Freezer and Wine cooler and Bow Bulkhead
- Equipment of the Galley includes: - Electric Five Burner Counter top with Pot Holder - Sink (Barazza or Similar) - Hood for the Cooking Top (Miele or Similar) - Conventional/ Microwave Oven (Miele or Similar) - Fridge and Freezer (total capacity:574 liters) equipped with ice maker, stainless steel finishing (Subzero) - Wine cooler for 78 Bottles (Subzero) - Dishwasher (Miele or Similar)
- Spotlight on the Ceiling
- Flooring in Wood

Wheelhouse Equipment

- Remote Controls for Engines & Thrusters(Bow and Stern)
- Manouvering Joystick on Both Helms

- Vertical Pillars of the Windscreen to be Upholstered with the same Leather of the Console
- Two Helm Seats
- Install Flag Rack
- Modify the Dashboard of the Wheel Station Installing a big Dashboard with an unique Instruments Panel (similar to the one already done on the 85/134). Displays Layout as per Approved Drawing
- Wheelhouse console equipped with: - Storage Cabinet on Port Side - Wheel Upholstered in Leather - Main Engines and Inverters Gauges - Navigation Electronics - Bow Thruster Control - Stern Thruster Control - Intercom Controls - Rudder Angle Indicator - Searchlight Control
- 15" Touchscreen to Control and Monitor the Following Systems: - Generators - 220V Power System - 24V Power System - Navigation - Lights - Indicator/Alarms of: fuel tank level, water tank level, grey and black water tanks - Bilges - Batteries - Fire Alarm System
- Central Staircase to Lower Deck
- Sofa C Shaped on Port Side with Cherry Wood Table
- Two Single Pilot Seats
- Electrical Panel placed on AFT of the helm Seats
- Carpet Flooring
- Three Cameras connected to a Monitor in Wheelhouse and Flybridge and Installed in the Following Positions: - One fixed in AFT Cockpit - Do Not Install One Fixed on Each Side of the Side Deck as Requested per Contract - One Pivoting and Zoom in Engines Room - One Pivoting and Zoom on Extreme AFT for Docking Purposes

Powder Room

- Heads: Marble with Perimeter Wooden Band of 10cm
- Do Not Install the Towel Bar on the Marble. Install it on the Bulkhead next to the Mirror (Bulkhead Totally in Cherry Wood and Without Shelves)
- Install Square Towels Bars if possible
- Bow Bulkhead: Mirror, divided into three parts with 2cm beveled and Perimeter Trim of 10cm
- Venetian Curtains
- Accessories Zucchetti Aguablu (do not install soap holder and glass in day head)
- Install in each heads soap dispenser Capannoli Slim SL 116VS
- Install in each heads a toothbrush holder Capannoli SL 103VS (do not install it in the day head)
- Install in each shower and near the master bath tub a soap and shampoo holder (in line with the accessories/ faucets)
- Layout as per General Arrangement
- WC TECMA
- Mirror, Shelves and Cabinet under the Sink
- Lights on Ceiling
- Washing Basin Top and Backsplash in Marble

- Wooden Flooring with Central Marbles Inlay

Master Cabin

- UPGRADE: Fridge in Master Cabin
- Upholster the Complete Bulkhead Behind the Bed with Material Supplied by the Owner
- AFT Bulkhead as per 95-12, with grate for AC, Central Cherry Wood Column with the same width as the TV, and with Shelves on the side of the TV
- Mirror on the Bow Bulkhead between the two Wardrobes
- Panels above the Nightstands to be in Mirror, with Predisposition for a Lamp, in Lieu of Cherry Wood Panels
- Install n.3 Safes in total (master cabin-vip cabin-captain cabin)
- Install Spring Mattresses (do not install them in crew quarter)
- Bedspreads, Decorative Pillows and Cushion Covers to be Upholstered as per Instruction. All the Pillows and Cushions Decorative in Feather with Suitable Cover Material
- Nightstands Tops in Marble
- Install Mirror on the AFT Bulkhead in the Lobby at the bottom of the Stairs
- Private Access with Separate Staircase from the Salon
- Lower Deck Lobby with Storage Area
- Double Bed with Storage underneath, Mattress, Bedspread and Pillows
- Two Nightstands
- Two Reading Lamps
- Indirect (neon) Lights on Ceiling
- Spotlights on the ceiling
- Indirect Light (non-neon) behind the Panels on the sides of the bed
- Indirect Light (non-neon) behind the recess on Bow Bulkhead
- Two Wide Panoramic Windows, one each side
- Opening Porthole on Port Side and on Starboard
- Two Armchairs with table in the Middle on Port Side
- Dressing Area on the Port Side with two Wardrobes
- Drawers on Starboard and Port Sides
- Vanity Cabinet with Stool on Starboard Side
- TV on AFT Bulkhead
- Shelves with Door under the TV on AFT Bulkhead
- Safe Box
- Curtains, Upholstery
- Carpet Flooring

Bow Master Head

- Side Cabinets to be Closed with Door and with Mirror on the Front Side
- Do not Install the Towel Bars in Front of the Sink

- WC Tecma
- Mirror, Shelves and Cabinet under the Sink
- Lights on Ceiling and above the Sink
- Lamps on the Sides of the Mirror
- Watertight Light Inside the Shower
- Shower with column and central rain shower on ceiling, Teak Grating, Teak Bench and Glass Door
- Accessories Zucchetti Aguablu (do not install soap holder and glass in day head)
- Install in each heads soap dispenser Capannoli Slim SL 116VS
- Install in each heads a toothbrush holder Capannoli SL 103VS (do not install it in the day head)
- Install in each shower and near the master bath tub a soap and shampoo holder (in line with the accessories/ faucets)
- Sink
- Shower Column, Washing Basin Top and Backsplash in Marble
- Air Extractor
- Washing Basin in Marble
- Marble Flooring with Wooden Perimeter
- Opening Porthole
- Venetian Curtain in Wood

AFT MASTER HEADS

- Do not Install the Magnifying Mirror (7x the Capacity with Internal light) in the Inboard Corner as Previously Requested
- Install Mirror (supplied by owner) without Light
- Side Cabinets to be Closed with Door and with Mirror on the Front Side
- Inboard Bulkhead of the tub: Install Two Panels in Marble, with a 10cm Gap in the Middle and on the sides
- Tub Faucet to be in line with the Sink Faucet
- Two Hanging Hooks on the Inboard Bulkhead

Guest Head

- Do not Install the Towel Bars in Front of the Sink
- Additional Tower Bar on AFT Bulkhead, in High Position
- Accessories Zucchetti Aguablu (do not install soap holder and glass in day head)
- Install in each heads soap dispenser Capannoli Slim SL 116VS
- Install in each heads a toothbrush holder Capannoli SL 103VS (do not install it in the day head)
- Install in each shower and near the master bath tub a soap and shampoo holder (in line with the accessories/ faucets)
- WC Tecma

- Sink
- Mirror, Shelves and Cabinet under the Sink
- Lights on Ceilings and above the Sink
- Watertight Light Inside the Shower
- Shower with Column and Central Rain Shower on Ceiling, Teak Grating and Glass Door
- Shower Column, Washing Basin Top and Backsplash in Marble
- Marble Flooring with Wooden Perimeter
- Opening Porthole
- Venetian Curtain in Wood

VIP Cabin

- Headboard to be in Mirror, in Two Sections as per 95-12
- Bow Bulkhead to be in Mirror, in Two Sections like the Headboard
- Wardrobe on Star Board Hull Side: Install Shelves in the Lower Part and Hanging Bar with Light in the Higher Part
- Vanity Stool 35x30 h46 in Lieu of the Swiveling Stool Previously Requested
- Double Bed with Storage Underneath, Mattress, Bedspreads and Pillows
- Install Safe
- Install Spring Mattresses (do not install them in crew quarter)
- Bedspreads, decorative pillows and cushion covers to be upholstered as per instruction. All the pillows and cushions decorative in feather with suitable cover material
- Two Nightstands
- Two Lamps
- Indirect (neon) Lights on Ceiling
- Spotlights on the Ceiling
- Indirect Light (non-neon) on the headboard panel
- Two Fixed Windows
- Opening Porthole
- Wardrobe with Shelves on Starboard side
- Wardrobe with Hanging Bar and Shelves on AFT Starboard side
- Storage Cabinet on Starboard Side
- Storage Cabinet with Drawers and Vanity on Port Side
- Storage Area behind the Headboard Panel
- Emergency Hatch on Ceiling
- Curtains and Upholstery
- Carpet Flooring

VIP Head

- Do Not Install the Magnifying Mirror (with internal light) in the Inboard Corner as Previously Requested

- Install Mirror (supplied by owner) without light
- Do Not Install the Towel Bars in Front of the Sink
- Vertical Panels to be in Marble
- WC Tecma
- Bidet
- Mirror, Shelves and Cabinet Under the Sink
- Lights on Ceilings and Above the Sink
- Watertight Light Inside the Shower
- Lamps on the Sides of the Mirror
- Shower with Column and Central Rain Shower on Ceiling, Teak Grating and Glass Door
- Shower Column, Washing Basin Top and Backsplash in Marble
- Marble Flooring with Wooden Perimeter
- Opening Porthole
- Venetian Curtain in Wood
- Accessories Zucchetti Aguablu (do not install soap holder and glass in day head)
- Install in each heads soap dispenser Capannoli Slim SL 116VS
- Install in each heads a toothbrush holder Capannoli SL 103VS (do not install it in the day head)
- Install in each shower and near the master bath tub a soap and shampoo holder (in line with the accessories/ faucets)

Starboard Crew Cabin

- Install the Track to Insert the Sliding Curtain that has to be Locked on the Two Beds (n.1 curtain for each bed)
- Two Bunk Beds, with Mattresses, Bedspreads and Cushions
- Drawer Underneath the Lower Bed
- Direct Light on Ceiling (Spotlights)
- Reading Lights
- Opening Porthole
- Wardrobe with Hanging Bar
- Storage Cabinet next to Wardrobe
- Curtains and Upholstery
- Vinyl Flooring

Captain's Cabin (Portside)

- Install n.3 Safes in total (master cabin-vip cabin-captain cabin)
- Do Not Install Bunk Bed
- Raise Up the Underneath Bed for Installing n.2 Extra Drawers. Total: n.4 Drawers Under the Bed

- Install n.2 Shelves with Anti Rolling with 20cm Depth Symmetric on Both Sides of the Porthole
- Bunk with Mattresses, bedspreads and cushions
- Drawer Underneath the Lower Bed
- Direct Light on Ceiling (Spotlights)
- Reading Lights
- Opening Porthole
- Wardrobe with Hanging Bar
- Storage Cabinet next to Wardrobe
- Safe Box
- Curtains and Upholstery
- Vinyl Flooring

Crew Head

The Crew Head is made by Two Separate Areas arranged as follows:

AFT HEAD:

- Shower
- Teak Grating
- Cabinet with Sink
- Top and Backsplash in Marble
- Mirror
- Direct Light on Ceiling
- Light in the Shower
- Vinyl Floor

PORT HEAD:

- WC Tecma
- Cabinet with Sink
- Mirror
- Direct Light on Ceiling
- Vinyl Floor

Crew Mess

- Port Side Bulkheads over the table: Install TV in the Middle with Cabinets above as the 95/15
- Bow Bulkheads: Install the Shelf with the Anti roll Rounded in Stainless Steel, lined up with the Port Side Bulkhead's Cabinet
- Install Microwave with Exhaust Fan Incorporated and, if is possible, Install Lateral Storage

Over the Cooking Top

- Install Refrigerator Underneath the STD Cooking Top
- Two Sofas for Four People in Total
- Wooden Table with Stainless Steel Base
- Washer Machine and Dryer Machine
- Cabinet with Granite Top, equipped with Sink, Cooking Top and Fridge
- Hanging Cabinet with Hood and Shelves
- Direct Light on Ceiling
- Vinyl Floor

Generators

- UPGRADE: Two 55 Kw Kohler Generators, 220 V, 50 HZ, Triphase in Engines Room, Installed on Silent Blocks
- Sound Shield Box, Control Panel and 12 V c.c Starter
- Remote Starter

Shore Power

- SAE 220V-110V 50-60Hz Converter
- 2 Shore Power Inlets- Bow Area
- Port and Starboard Power Cords- AFT Area- Glendenning
- One 125A Shower Power Inlet on the Transom, connected to an Insulation Transformer 50KVA Triphase with Choosing Input: 220Vac, 380Vac, 400Vac
- Alternating Current Power Sources Run to the Main Electrical Panel in Engine Room provided with voltmeter and frequency-meter for 220V Power Grid

Batteries

- Gel Batteries
- Additional Battery Charges for Generator Batteries
- Group of Gel Batteries 770Ah @ 24V (C5h), for Service/Emergency
- Group of Gel Batteries 200Ah @ 24V (C5h) for R/T System
- Two Groups of 24V Leaded Batteries of 2 X 220 Ah for Engine Starter
- Two Groups of 12V Leaded Batteries of 2 X 140 Ah for Generator Starter
- Two 100Ah Master Volt Automatic Battery Chargers for Service Batteries
- One 50 Ah Master Volt Automatic Battery Chargers for R/T
- One 25 Ah Master Volt Automatic Battery Chargers for Engine Starter Batteries
- One 50 Ah Master Volt Automatic Battery Chargers for Generator Batteries
- During the Navigation Gen Sets' alternators will charge their Own Batteries

Lighting System & Outlets

- UPGRADE: Two Additional Electrical Inlet on Bow + Phone and TV Intakes
- Ten Additional Spotlights (Position to be Defined)
- Predisposition for Wall Lamps on the Mirrored Panels above the nightstands in all the Cabins and Table Lamps on the Cabinets in Salon
- Five 110V Electrical Outlets
- Dimmers for External Lights (Cockpit and Flybridge)
- Heads: Lateral Lamps for the Mirror as the STD. Solution without the Stainless Steel Central Area- A Unique Piece of Satin Glass
- Master Cabin: Install n.2 Bulkheads Lamps Terzani mod. Louvre (62x27) placed in Central Position Below the Mirror
- Install one 110V Outlet on each side of the Master Cabin: one Next to the Vanity and one next to the table/ armchairs
- Guest Cabins: Install n.2 Table Lamps Penta art. Kori Otto Moon Ebano Large 43x29 (one for each cabin)
- VIP Cabin: Install n.2 Table Lamps Axolight- Clavius- LTCLAVIPACRE 14- Chrome with Tobacco Shade
- Lighting of the Engine Room is done by means of Watertight Ceiling Lamps
- Lighting of Cabins is done through Halogen Spot Lights. Each Cabin is provided with the following: - Indirect Lights on Ceiling with Controls Close to Entrance Door and Nightstand - Reading Lights with Controls on Nightstand - Lights on Ceiling in the Head with Control Close to Door - Lights on Mirror in the Head with Control Close to Mirror - Courtesy Lights - 220V Outlets in the Cabin -220V Outlets in the Head
- Lighting of the Internal Main Deck is Defined as Follow: - Indirect Lights on Ceiling with Controls in Various Places - Lights on Ceiling in the Day Head with Controls Located Next to the Door - Courtesy Lights - 220V Outlets
- Lighting System of Crew Area and Galley with the Following Voltages: - Ceiling Lights with Controls Placed in Several Areas - 220V Outlets in the Cabins and Heads

Electronics

- UPGRADE: G Series Electronics in Lieu of STD Supply
- Install 2 Raymarine displays on Fly and Install CAT Marine Power Display Screens. Supply Installation Drawings for the Screens in Wheelhouse and on Fly Bridge and Proposal of Instrumentation Similar to 85-134. Layout as per Sketch by Capt

HULL

- N.1 Raymarine Speed Transducer
- N.1 Raymarine Depth Transducer

WHEELHOUSE CONSOLE

- Raymarine G series with redundant smart talk boxes
- Dual 17" Raymarine monitors with touch pad control panel
- Raymarine Autopilot
- Dual Raymarine ST 70 Multifunction displays (wind, depth, speed, heading)
- UPGRADE: Zero Speed and Trac Stabilizers Controls
- Dual CAT Main Engines Monitors
- Dual Marine VHF Radio Radios- Redundant Antennas
- UPGRADE: Video Explorer Security Camera Controls (Display on Raymarine Monitors)
- UPGRADE: 15" Azimut Touch Screen Yacht Control Panel
- UPGRADE: Back up PC displayed on Raymarine Screen with Nobletech Navigation Software and Independent GPS Antenna

UPPER DECK CONSOLE

- UPGRADE: Dual Raymarine 15" G Series Monitors
- Remote Control Touch Pad Screen for Raymarine Systems(access to bridge via wireless from main helm)
- Autopilot
- Dual Raymarine ST 70 Multifunction Displays (same as main helm)
- 2 x CAT Main Engine Monitors
- Bow Thruster Controls
- Dual VHF Marine Radios

ROLL BAR

- N.1 Pathfinder Open Array 4.4 KW Antenna
- Raymarine 12 KW Open Array Antenna
- N.1 Raymarine VHF Antenna
- N.1 Raymarine GPS Raystar 125 Seataalk/ NMEA Antenna
- UPGRADE: 2nd GPS antenna for PC for Nobletech Software

Communication System

- Phone System with Phone Outlets in the Following Areas (PABX Central Unit and Telephones are not included): - Wheelhouse - Galley - Salon - Master Cabin - VIP Cabins - Guest Cabin - Crew Mess
- Manouvering Intercom System with Five Stations: - Control Unit in Wheelhouse and Flybridge - Loudspeaker and Earphones in Tecnical Area in the AFT - Loudspeaker in the Manouvering Area on Bow - Loudspeaker in AFT Cockpit

Entertainment System

- UPGRADE: KVH M9 SAT TV System Antenna with Tri Americas LNB

- UPGRADE: KVH V7 SAT TV Internet System with VOIP SAT Phone Service
- UPGRADE:Kaleidescape Movie System with Independent Controls on all TV's Onboard
- UPGRADE: 2 X Creston Touch Screen Panel Capable of Controlling All AV Zones Onboard- 1 Touch Screen in Salon and Other in Master
- Water Resistant Stereo Control Panel on Flybridge and Bow Seating Area
- UPGRADE: North American Direct TV Receivers and 6 Latin American Receivers for Easy Transfer Between Regions.
- Wi Video Game Console in Salon Cabinet Attached Creston System.
- UPGRADE: Ipod Dock in Salon (Plays Music in all Zones of Creston System)
- UPGRADE: SALON: 50" LCD HD TV Hi-Lo Mechanism for the TV Multistandard TV Turner Home Theater Bose Lifestyle 18- Silver
- MASTER CABIN: 32" LCD TV Home Theater Bose Lifestyle 18- Silver
- VIP CABIN: 23" LCD TV Samsung CD/DVD Player Yamaha Two Sony Loudspeakers
- CREW DINETTE: Sony CD Player Two Sony Loudspeakers
- CREW CABINS: Sony DVD Player Two Sony Loudspeakers
- AFT COCKPIT: Two Sony Loudspeakers linked to Salon Stereo System
- BOW AREA: Two Sony Loudspeakers Linked to Salon Stereo System
- UPPER DECK: Four Sony Loudspeakers Linked to Salon Stereo System

Fire & Alarm System

- Thirteen Portable Extinguishers in all the areas of the Yacht as follows: - No.2 5kg CO2 Extinguishers - No.5 2kg Powder Extinguishers - No.6 1kg Powder Extinguishers
- FM200 Fire Extinguisher System for the Main Engines: - Manual Control Station, Placed on AFT Portside of Superstructure - Cabinet Placed under the Stair Case to the Crew Quarters with the following: - One 108 kg bottle FM200 - One CO2 pillot bottle
- Two Fire Extinguisher Hoses placed as follows: - One on AFT, under the Staircase to the Upper Deck - One on Bow, Next to Anchor Winch
- Alarm Firefighting System: Smokes Detector in the Following Areas: - Engine Room Area - Dinette Crew Area - Corridor Lower Deck - Master Cabin - Galley - Saloon - Helm Station - Area under Helm Station

Fuel System

- One Tank Placed in Engine Room and One Structural Tank Positioned Midship. Total Capacity: (3,044 gals).
- Each Tank is Provided with Breather Pipe and Electric Sensor for Level Monitoring
- Fuel Level, Electrical Level and their Alarms are Visible in Wheelhouse and on the Main Electrical Panel

- Fuel Filing Operation is Carry Out by Filling Both Tanks
- Reversible 220 V AC Electro-Pump, Automatic and Manual, with a Capacity of 65l/min (37 glas/h), to transfer fuel
- Duplex RACOR Filters on Engines Type 75/1000 MA
- Dual RACOR Filter on Generators Type 500 MA
- AISI 316, Copper or Rubber Flameproof Piping

Fresh Water System

- Install Vertical Marinco Water maker 180 l/h
- One 24V Backup Fresh Water Pump/220V Fresh Water Pump
- System can be Fed Bith by Structural Tank with a Capacity of 1.800 lt (476 gals) and Shore Connection
- Plug for the Shore Connection on AFT Transom
- Two 24 V Electrical Pumps Positioned in Engine Room, Pump Water from Structural Tank to all Users: Washbasins, Sinks, Showers, Electrical Appliances, AFT Platform Shower and Washing Deck Hose
- Water Heater with 100 lt (26 glas) Maximum Capacity
- WC System is Tecma Type, Working with Fresh Water
- Fresh Water Spare Pump (not installed) is supplied
- Stainless and Unipipe
- Spot Zero Reverse Osmosis FW System, Runs Dock Water and Processes it through Filtration to Drop Water the Parts per Million. Helpful for Exterior Washdowns, Interior Spotting, Calcium Build up, and for Drinking Water

Black & Grey Water Tanks

- UPGRADE: One Spare Grey/ Black Water Pump (Not Installed)

GRAY WATER SYSTEM

- One Gray Water Tank, with a Maximum Capacity of 1100 lt (291 gals) with Anti-Smell Filter
- Electrical Pump 220V with 45 lt/ min.max.flow rate. The Pump Works Both Automatically and Manually. In the First Case a Timer Guarantees the Total Emptying of the tank outboard.
- Two Secondary Collecting Tank to Discharge into the Main Tank the Gray Waters Collected in the Crew and Midship Secondary Tanks
- Gray Water Spare Pump (not installed) is supplied
- Brass Piping in Engine Room and in PVC Everywhere else

BLACK WATER SYSTEM

- W.C Discharge are piped, under pressure, into one black water tanks (total capacity: 1100

It- 291 gals). Black Water Tanks can Discharge Ashore by Means of an automatic/ manual electric Pump (220 V).

- Black Water Spare Pump (not installed) is supplied
- Brass Piping in Engine Room and in PVC Everywhere else

Sea Water System

- Four Main Water Intakes with Stainless Steel Valve and Filter: Two for General utilities and one for each main engine
- Antifire, Air Conditioning, Generators Cooling and Watermaker (when installed) are Connected to the Two Sea Water Intakes for General Utilities
- Part of Cooling Main Engines Water is Used to Cool Gear Box and Raisers for Gas Discharges
- CuNi Piping
- Sea Water Fire System with Electric Pump, 220V, 200 lt/ min. (53 gals/min) max. Flow Rate, Placed in Engine Room and Connected to Three Main Deck Hoses (bow and stern). The Pump Control is Positioned on Wheelhouse Console, Electrical Panel in Engine Room and Close to Anchor Winch

Electro-Hydraulic System

- UPGRADE: Zero Speed Stabilizers
- UPGRADE: Hydraulic Stern Thruster
- One Electro-Hydraulic Unit in the Engines Room for Bow Thruster
- One Electro-Hydraulic Unit in the AFT Technical Area for Gangway and Swim Platform
- One Electro-Hydraulic Unit in the AFT Technical Area for Rudders, Working at 220V and 24V

Air Conditioning, Venting & Extractor System

- Cruisair Tropical Air Conditioning 186.000 b.t.u- Water Recirculation
- Stand Alone Spare Circulating Pump and Raw Water Cooling Pump
- Fancolis Spread in all the Following Areas (heads excluded) with Separate Control: - Salon: 3 x 18,000 BTU+ 1 x 12,000 BTU - Galley: 1 x 12,000 BTU - Wheelhouse: 2 x 18,000 BTU - Master Cabin: 2 x 12,000 BTU - Master Head: Duct from the Cabin - Starboard Guest Cabin: 1 x 9,000 BTU - Starboard Guest Head: Duct from the Cabin - Port Guest Cabin: 1 x 9,000 BTU - Port Guest Head: Duct from the Cabin - VIP Cabin: 2 x 9,000 BTU - VIP Head: Duct from the Cabin - Crew Cabin: 1 x 4,000 BTU - AFT Crew Head: Duct from the Cabin - Captain Cabin: 1 x 4,000 BTU - Port Crew Head: Duct from the Cabin
- Engine Room Venting System Through Two Electric Fans (220V) and Two Electric
- Extractors (220V) in order to guarantee Good Air Circulation

- Cooling Unit, Cooling Pumps and Circulating Pump Placed in Engine Room
- Centralized Air Extraction System for Heads (Master, VIP and Guest Heads) through one Extractor
- Air Extractor for the Crew Heads
- Air Extractor for the Technical Area Under the Wheelhouse
- Service Batteries Extractor Placed Next to the Batteries Boxes
- Air Extractor in the Technical Area on AFT

Insulation

- Ceiling, Sides and Bulkheads of Engine Room are Completely Insulated with Absorbent, Soundproofing and Heat Insulated Materials
- Venting and Extracting Ducts are Insulated
- Heat Insulation of the Superstructure
- Main Engine Discharging Ducts are Insulated Through Composite Materials (CR Type)

Decor

- Nightstands Tops +TV Cabinet Top: CREMA MARFYL
- Bulkheads in Cherrywood and Fabrics
- Headboards in Fabrics
- Ceilings in Lacquered Wood, Fabrics and Cherrywood
- Floors in Carpet
- Furniture in Cherrywood Leather Tops
- Master Cabin Armchairs in Fabrics with Stainless Steel Bases
- Roman Shades
- Decorative Curtains with Blackout

SALON AND DINNING AREA

- Sofas: PENELOPE OGGI PUMA 242
- Dining Chairs and Smoking Table: PENELOPE OGGI ANACONDA 1302 Quartz
- Panel and Sliding Doors in Main Deck: Fabric Art. 4187-271
- Roman Shades and Stern Side Door Curtains in Main Deck: Fabric Art. 17926-1
- Upholstered with: Fabric Art. 23150-173
- N.6 Feather Decorative Cushions: Fabric Art. 26544-5
- Bar Cabinet Top: GRANITO NERO GALAXY
- Cabinet Tops in Salon: GRANITO NERO GALAXY
- Floor Behind the Bar Cabinet: GRANITO NERO GALAXY
- Ceilings: All the Boat and Panels of the Lower Deck in Daytona STD
- All Furniture in Cherrywood with Leather Tops
- Bar Cabinet in Cherrywood, Granite and Glass
- Ceilings in Lacquered Wood, Fabrics and Cherrywood

- Floors in Carpet in the Main Deck
- Floor Behind the Bar in Granite
- Roman Shades
- Decorative Curtains on the Windows
- Curtain with Blackout at the Main Entrance Door
- Sofas in Fabric and Leather with Stainless Steel Bases
- Dining Chairs in Cherrywood and Fabrics

WHEELHOUSE

- Wheelhouse and Wheelhouse Bench Settee: Nieri Luxor Extra 9214
- Helm Settee Back: Fabric Art. 28142-66
- Decorative Perimeter Band under the Consolle: Fabric Daytona Col.1
- Electric Panel Covers and Serving Hatch Sliding Panels: Fabric Art. 4187-271
- All Furniture in Cherrywood with Fabrics Inserts
- Wheelhouse Console in Leather and Cherrywood
- Helm Seats in Leather
- Sofa with Base in Cherrywood and Cushions in Leather and Fabrics
- Floor in Carpet

GALLEY

- Top: GRANITO NERO GALAXY
- Bulkheads in Cherrywood
- Sliding Panels in Cherrywood and Fabrics
- Galley Contertop Granite and Backsplash Behind the Cooking Top in Stainless Steel
- Doors in Cherrywood
- Floor in Solid Cherywood

STAIRCASES TO GUEST AREA

- Bulkheads in Cherrywood with Fabrics Inserts
- Steps in Carpet with Cherrywood Trim
- Stainless Steel Handrail

CABINS

MASTER CABIN:

- Bedspread: Fabric Art. 27710-03 Upholstered with: Fabric Art. 23150-777
- Pillows Cover (85x60cm): fabric Art. 27710-03 Trimmed by Art. 33048-16
- Roman Shades: Fabric Art. 19742-03
- Decorative Curtains: Fabric Art. 565-1 with Blackout Lining: Fabric Art 25757-170
- N.2 Armchairs: Fabric Art. 33046- Ivory
- Higher Perimeter Band in Lobby: Fabric Daytona col.1
- Starboard and Portboard Side: Fabric Daytona Col. 1

- Vanity Stool: Kravet Nuostrich- col.16

VIP CABIN

- Bedspread: Fabric Art. 30027-05 Upholstered with: Fabric Art. 3853-122
- Pillows Cover (cm 75x50): Fabric Art. 30027-05 Trimmed by Art. 33183- Portabello
- Roman Shades: Fabric Art. 8718-09
- Decorative Curtains: Fabric Art. 9790-18 with Blackout Lining: Fabric Art 25697-092
- Pouff Vanity: Fabric Art. 25693-021
- N.2 Decorative Cushions (40x40): Art 9790-18
- Starboard Door: Fabric Daytona Col. 1

GUEST CABIN 1

- Bedspread and Pillows Covers (85x60) (dimension to be confirmed) Fabric Art. 33184-garnet
- Bedspread Upholstered with: Fabric Art. 3853-122
- Headboard: Fabric Art. 29999-47103
- Wardrobe Door Midship: Fabric Daytona Col. 1
- Roman Shades: Fabric Art. 17930-02
- Decorative Curtains: Fabric Art. 29826-16 with Blackout Lining: Fabric Art. 25757-477

GUEST CABIN 2

- Bedspreads and Pillows Covers (75x50) (dimensions to be confirmed): Fabric Art. 29999-47103
- Bedspreads upholstered with: Fabric Art. 3853-122
- Headboard and External Folding Bed: Fabric Art. 33128-2068
- Wardrobe Door Midship: Fabric Daytona Col.1
- Roman Shades: Fabric Art. 17930-02
- Decorative Curtains: Fabric Art. 29826-16 with Blackout Lining: Fabric Art. 25757-477

HEADS

- Tops + Floors: CREMA MARFYL (floor with 10cm Wooden Band)
- Vertical Panels: CREMA MARFYL
- Shower Panels in VIP Head: CREMA MARFYL
- Cabinet Tops on Hullsides: CREMA MARFYL
- Mirror Trims: CREMA MARFYL
- Panels Next to the Tub: CREMA MARFYL
- Top of Crew Dinette: GRANITO NERO ASSOLUTO
- Head Tops: GRANITO NERO ASSOLUTO
- Countertops in Marble
- Floors in Wood with Marble Inserts
- Bulkheads in Cherry Wood with Lacquered Wood Inserts
- Ceilings in Lacquered Wood with Cherrywood Inserts

- Furniture in Cherrywood
- Shower Bulkheads in Laminated Cherrywood Finishing with Lacquered Inserts
- Venetian Blinds

CREW QUARTERS

- Ceilings and Decorative Vertical Panels: Fabric America 901
- Dinette Sofa: Fabric FMG RANGER 303-3960 CAMEL
- Ceilings in Fabrics
- Floors in Vinyl
- Curtains in the Cabins

CAPTAIN CABIN

- Bedspread: Fabric Art. 17302-795
- Pillow Covers: Fabric Art. 20144-123
- Curtains: Fabric Art. 16572-724

CREW CABIN

- Bedspreads and Pillows Covers: Fabric Art. 20145-121
- Curtains: Fabric Art. 16572-724
- Bulkheads and Furniture in Laminated with Inserts in Fabrics and Lacquered Wood

Disclaimer

The Company offers the details of this vessel in good faith but cannot guarantee or warrant the accuracy of this information nor warrant the condition of the vessel. A buyer should instruct his agents, or his surveyors, to investigate such details as the buyer desires validated. This vessel is offered subject to prior sale, price change, or withdrawal without notice.

Исключения

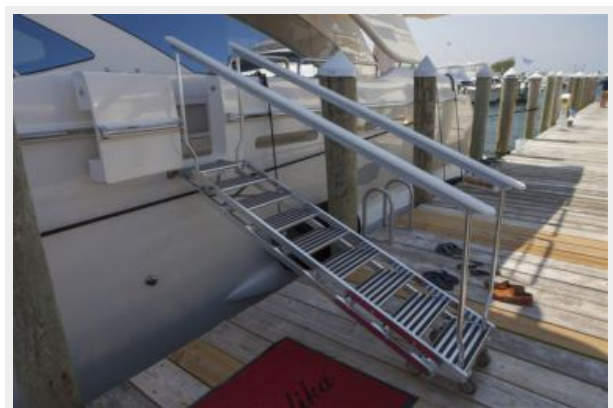
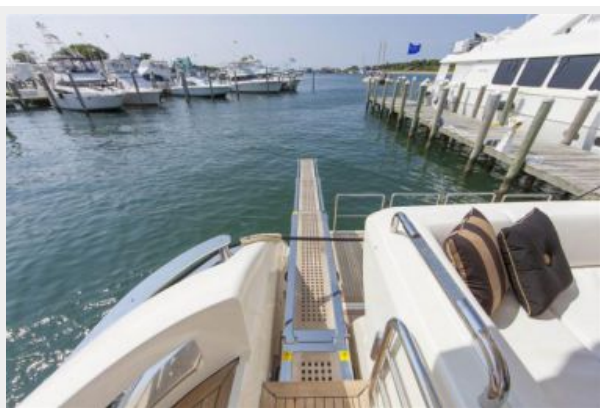
При продаже яхты исключаются личные вещи владельца.

Отказ от ответственности

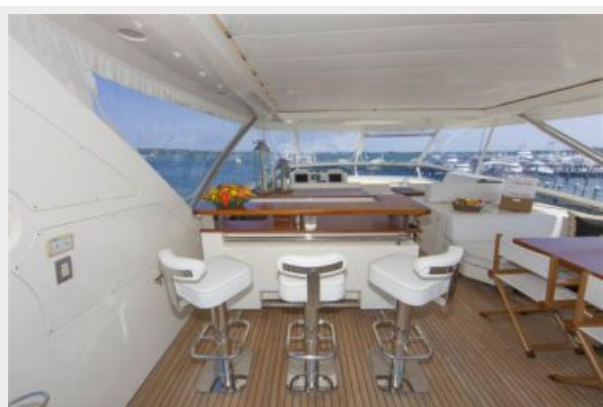
Компания предоставляет описание судна или яхты добросовестно, но не может гарантировать точность этой информации, а также не ручается за техническое состояние. Покупатель должен проинструктировать своих агентов или оценщиков исследовать представленную информацию более подробно, по собственному желанию. Продажа судна или яхты, изменение цены или снятие с продажи будет происходить без предварительного уведомления.

ФОТОГРАФИИ

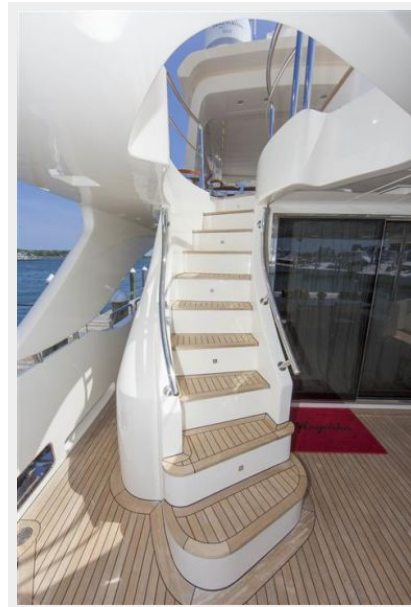




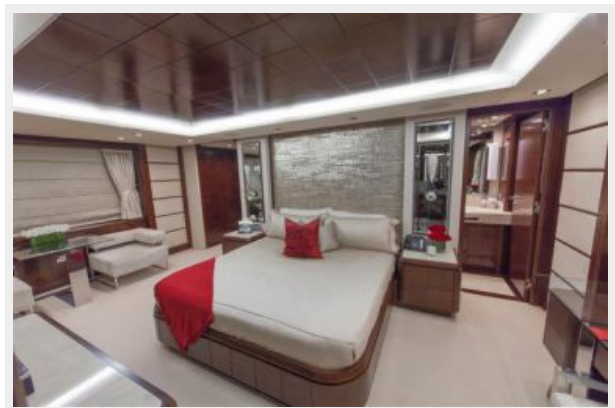
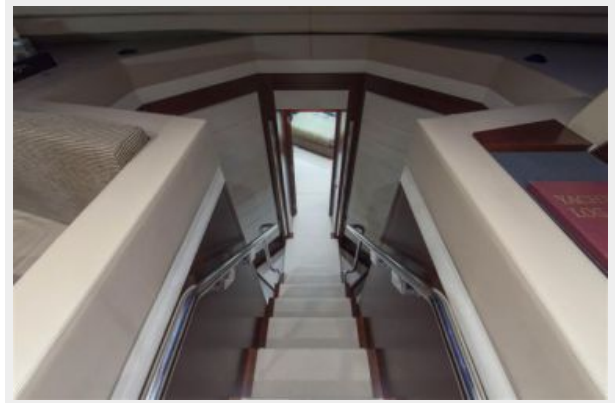






















КОНТАКТЫ

Андрей Шестаков (Andrey Shestakov) – ведущий яхтенный брокер отдела продаж яхт и судов компании Shestakov Yacht Sales Inc. Официальный представитель Shestakov Yacht Sales Inc. для русскоговорящих клиентов в центральном офисе компании в Майами/Форт Лодердейл/Флорида/США.

Контактная информация

Email: andrey@shestakovyachtsales.com

Web: shestakovyachtsales.com

Телефоны

Краснодарский край: **+7(918)465-66-44**

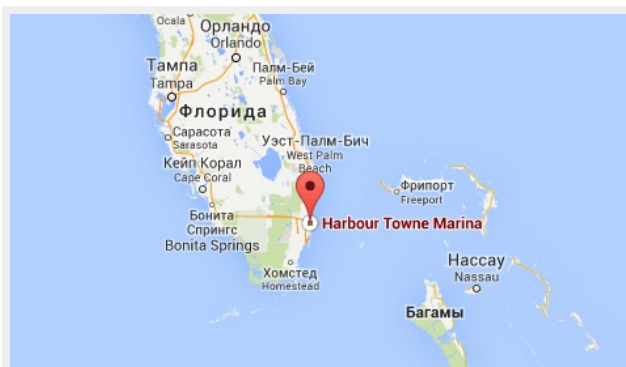
США, Майами, Флорида: **+1(954)274-4435**

Время работы

Понедельник – Суббота: **9:00 - 21:00**
EDT

Воскресенье: **Закрито**

Адрес



Harbour Towne Marina, 850 NE 3rd St,
STE 213, Dania, FL 33004