

# LADY SHERIDAN — ABEKING & RASMUSSEN



**Судостроитель:**

ABEKING & RASMUSSEN

**Год постройки:** 2007

**Модель:** Моторная яхта

**Цена:** ЦЕНА ЯХТЫ ПО ЗАПРОСУ

**Местонахождение:** United States

**Длина общая:** 190' 0" (57.91m)

**Ширина:** 35' 11" (10.95m)

**Мин. осадка:** 11' 0" (3.35m)

**Макс. осадка:** 11' 6" (3.51m)

**Крейс. скорость:** 14 Kts. (16 MPH)

**Макс. скорость:** 16 Kts. (18 MPH)

Купить **LADY SHERIDAN — ABEKING & RASMUSSEN** а также выбрать подходящую вам яхту из нашего каталога яхт вам поможет опытный яхтенный брокер Андрей Шестаков. На сегодняшний день компания **Shestakov Yacht Sales Inc.** имеет большое количество яхт в собственном списке продаж, а также тесно сотрудничает со всеми крупными яхтенными производителями по всему миру.

Для того чтобы купить яхту **LADY SHERIDAN — ABEKING & RASMUSSEN** а также проконсультироваться по любому вопросу связанному с покупкой, продажей, чартером яхт позвоните по телефону **+7(918)465-66-44**.

# ОГЛАВЛЕНИЕ

---

ОГЛАВЛЕНИЕ	2
ХАРАКТЕРИСТИКИ	4
Обзор	4
Основная информация	4
Размеры	4
Скорость, вместимость и масса	5
Размещение	5
Корпус и палуба	5
Информация о двигателе	5
ПОДРОБНОЕ ОПИСАНИЕ	6
DESCRIPTION	6
ACCOMMODATION	6
MACHINERY	7
AUXILIARY MACHINERY & ELECTRICAL SYSTEM	7
TANK CAPACITIES (approximate)	8
ANCILLARY EQUIPMENT	8
SAFETY & SECURITY EQUIPMENT	8
COMMUNICATION EQUIPMENT GMDSS EQUIPPED & CERTIFIED	10
NAVIGATION EQUIPMENT	11
DECK EQUIPMENT	12
AUDIO/VISUAL ENTERTAINMENT SYSTEMS	13
DOMESTIC EQUIPMENT	13
OTHER EQUIPMENT	15
Exclusions	16
Исключения	16
Отказ от ответственности	16
ФОТОГРАФИИ	17
Dining	17

---

Main Salon	17
Foyer	17
Master Stateroom	17
Master Stateeroom	17
Private Cabin w/in Master	17
Head	18
Head	18
Entry to Lower Deck	18
Guest Head	18
Entry to Skylounge	19
Bridge	19
Skylounge	19
Skylounge	19
Aft Deck	19
VIP Guest	19
Running	20
VIP Guest	20
Running	20
Running	20
Layout	21
LayoutLayout	21
<b>КОНТАКТЫ</b>	<b>22</b>
Контактная информация	22
Телефоны	22
Время работы	22
Адрес	22

---

# ХАРАКТЕРИСТИКИ

## Обзор

**\*\*Not for sale to U.S. citizens while in U.S. waters\*\* One owner - excellent proven charter history**

LADY SHERIDAN represents the culmination of a series of five sister-ships built by Abeking & Rasmussen over a period of 10 years. She is considered the most advanced of this group in terms of overall engineering details as well as the most comprehensive interior fit-out of any boat of her size done by this legendary yard.

Working closely with Donald Starkey on exterior and interior design, her owners took the previous experience and layouts of the past yachts built and fine-tuned them to meet their requirements for exceptional fine woodworking and luxurious accommodations, with an emphasis on outdoor entertaining areas.

Starkey utilized exotic woods such as platanus, Japanese ash, sycamore and macassa along with various shades of mahogany and teak to give the boat a warm and cozy feel with an ultra-clean edge of details throughout. Oliver Treutlen hand woven and custom designed wool carpeting, exotic usage of marbles, onyx and mother of pearl finishes along with extensive usage of stainless steel and leather hand rail details give this spectacular yacht a finish and fit that is remarkable and speaks to the overall quality of the build and Abeking's ability to integrate all this into a wonderfully executed and superbly engineered one of a kind yacht. DYSID:2741253

## Основная информация

**Тип судна:** Моторная яхта

**Модельный год:** 2007

**Год постройки:** 2007

**Страна:** United States

## Размеры

**Длина общая:** 190' 0" (57.91m)

**Длина по ватерлинии:** 166' 2" (50.65m)

**Ширина:** 35' 11" (10.95m)

**Мин. осадка:** 11' 0" (3.35m)

**Макс. осадка:** 11' 6" (3.51m)

## Скорость, вместимость и масса

**Крейс. скорость:** 14 Kts. (16 MPH)

**Макс. скорость:** 16 Kts. (18 MPH)

**Чистый вес:** 1099 Pounds

**Вместимость воды:** 9640 Gallons

**Объем топливного бака:** 44386 Gallons

## Размещение

**Всего кают:** 6

**Всего коек:** 5

**Спальные места:** 12

**Всего ком. состава:** 9

**Каюта капитана:** Да

**Каюты экипажа:** 7

**Койки экипажа:** 14

**Спальных мест экипажа:** 14

**Комм. состав экипажа:** 9

## Корпус и палуба

**Материал корпуса:** Steel

**Материал палубы:** Teak

**Дизайнер корпуса:** Abeking & Rasmussen

**Дизайнер экстерьера:** Donald Starkey

**Дизайнер интерьера:** Donald Starkey

## Информация о двигателе

**Двигатели:** 2

**Производитель:** Caterpillar

**Модель:** 3516B DI Diesel Engines

**Тип двигателя:** Inboard

**Тип топлива:** Diesel

---

# ПОДРОБНОЕ ОПИСАНИЕ

---

## DESCRIPTION

---

Lady Sheridan's build was a culmination of a series of five sister-ships built by ABEKING & RASMUSSEN built over a period of 10 years. Working closely with DONALD STARKEY on its overall exterior and interior design the owners took the previous experience and layouts of the past yachts built and fine tuned them to meet their requirements for exceptional fine woodworking and luxurious accommodations and more emphasis on outdoor entertaining areas.

Starkey utilized exotic woods such as platanus, Japanese ash, sycamore and macassa along with various shades of mahogany and teak to give the boat a warm and cozy feel with an ultra-clean edge of details throughout. Oliver Treutlen hand woven and custom designed wool carpeting, exotic usage of marbles, onyx and mother of pearl finishes along with extensive usage of stainless steel and leather hand rail details give this spectacular yacht a finish and fit that is remarkable and speaks to the overall quality of the build and ABEKING's ability to integrate all this into a wonderfully executed and superbly engineered one of a kind yacht. Click on link for Video Tour:

## ACCOMMODATION

---

**MASTER STATEROOM** - Full width Owner's suite with King Bed, study/office, sitting area, his and hers en-suite marble baths and walk-in dressing room. A 7<sup>th</sup> Cabin within the Master stateroom with en-suite marble bath can be used for a nanny or a small child

**VIP CABIN**— King bedded cabin on the bridge deck with en-suite marble bath.

### GUEST CABINS:

3 x Cabins with King beds and en-suite marble baths

1 x Twin berth cabin with en-suite marble bath.

### CABIN WITHIN MASTER STATEROOM:

Single berth Staff cabin with ensuite shower and bath mainly used on charter.

**CAPTAIN:**

Double cabin with shower room en-suite

**CREW:**

7 x Twin bunk berth cabins with shower rooms en-suite

---

**MACHINERY**

---

**MAIN ENGINES:** 2 x1, 400Kw (1,877hp) Caterpillar type 3516B DI diesel engines **ENGINE HOURS:**

Port Main Engine

Total Hours - 13410 Top End Overhaul @ 8570 Hours

Stbd Main Engine

Total Hours - 13363 Top End Overhaul @ 8567 Hours

**GEAR BOXES:**

ZF type BW 460 Series, 1:4.063 reduction ratio **SHAFTS & PROPELLERS:** 2 x 5-Bladed fixed pitch propellers **SPEEDS & FUEL CONSUMPTIONS**

Cruising speed 14 knots

Maximum speed 16 knots at approx. 550 litres

(145 US gallons) per hour consumption **RANGE**

4,000 nautical miles

---

**AUXILIARY MACHINERY & ELECTRICAL SYSTEM**

---

**GENERATORS:** 2 x 240Kw Caterpillar type 3406 DI - TA 1 x 84Kw Caterpillar type 3056 DI-T  
Emergency Generator

**GENERATOR HOURS:**

## Port Generator

Total Hours - 31158 Second Rebuild @ 25392 Hours Running Hours Since Rebuild - 5766

## Stbd Generator

Total Hours - 30970 Second Rebuild @ 25804 Hours Running Hours since Rebuild - 4572

## ELECTRICITY:

230v/400v AC, 3-Phase, 50Hertz

**SHORE POWER:** 2 x 180 amp Jovyatlas converters **BATTERIES:** 24v Bank for Radio System  
24v Bank ship system 24v Bank for Emergency generator 24v Bank for each Main Engine 24v  
Bank for each auxiliary generator UPS system for lighting

## TANK CAPACITIES (approximate)

**FUEL:** 168,000 Litres (44,386 US gallons) **WATER:** 36,438 Litres (9,640 US gallons)  
**WATERMAKERS:** 2 x Hydro Electric Marine (HEM) Series 40 water maker producing  
approximately 15,000 Litres (3,960 US gallons) per 24 hours **LUB OIL:** 4,500 Litres (1,190  
US gallons) **DIRTY LUB OIL:** 3,565 Litres (943 US gallons) **GREY/ BLACK WATER:** 15,840  
Litres (4,190 US gallons)

## ANCILLARY EQUIPMENT

Cathelco ACTIVE ANODE SYSTEM Hydro Control type HC 625.0040.05 STEERING SYSTEM  
Anschutz RUDDER ANGLE INDICATOR 125Kw Schottel STT 60 electric BOW THRUSTER  
Quantum zero speed STABILIZERS Racor FUEL FILTERS Westfalia self cleaning FUEL  
SEPARATOR DVZ Oil Chief 500 OIL/WATER SEPARATOR Drews HVAC Control AIR  
CONDITIONING Evac fresh water WC's Hamann SEWAGE TREATMENT **FIRE/BILGE PUMP:**  
3 xAllweiler fire pumps type NT32-200 two in engine room(26m3/hour capacity) & one on tank  
deck.) 2 x Depa type DL 25-FA-NNN air operated diaphragm pumps5m3/hr capacity each,  
located in the Lazerrette. **BOILERS:** 2 x 15Kw calorifiers, 500 litres each

## SAFETY & SECURITY EQUIPMENT

### SAFETY

2x RFD Surviva Mk III 20 person life rafts

2x RFD Surviva Mk III 25 person life raft

26x Aquata ARO V20 adult regular survival suits



2x Aquata ARO V20 Adult large survival suits

1x imperial MQ254 Adult small survival suit

2x Stearns I 590 child survival suits

61 x Crewsaver 275N Inflatable lifejackets

41x Seepilz solid core solas lifejackets-adult

10x Seepilz solid core solas lifejackets-child

12 x West Marine coastal inflatable lifejackets

1x Epirb, ACR RLB-35

1x Epirb ACR RLB-38

2x SART ACR Pathfinder 3

8 x Life rings (2 x with lights, 2 x with 100ft/30.5m buoyant line and 2 x with light & smoke marker)

Assorted flares, smokes canisters, rockets and pyrotechnics.

Servoteknikk fire monitor system

Martek Model MM 2000 Gas detection system

## **FIRE FIGHTING**

3 x fire pumps types Allweiler NT32-200 (two in engine room & one on tank deck)

Minimax sprinkler system throughout

Minimax Co2 system for engine room & main galley

Drager type Safer CF10 emergency escape breathing devices (EEBDs)

40 x Gloria 5Kg/9ltr fire extinguishers

Gloria/Werke 80ltr AFFF fire extinguisher (engine room)

22 x Fire hydrants and hoses

2x Fireman suits with Drager airboss evolution LP SCBA

Facepiece, harness, cylinder with 3 spare cylinders.

2x M-20.2 EEBD Onenco

4x Sabre Elsa EEBD

27x Drager Paret C smokehoods

## **ALARMS**

ASI PLC Modicon type 984-A120 alarm monitoring system with 220 channels

## **SECURITY**

Panasonic CCTV with type WV-CU360CJ control

6 x cameras. Remote controlled camera with 180° vision on mast.

Can be monitored on all TVs CCTV control panel MX touch in pilothouse

# **COMMUNICATION EQUIPMENT GMDSS EQUIPPED & CERTIFIED**

---

## **SATCOM**

Satcom 1, Nera Fleet 77

Satcom 2, Nera Fleet 77

Satcom 3, Nera Fleet 33

Satcom C T&T H2095

## **CELLULAR SYSTEM**

Cellular 1, Ericsson W35

Cellular 2, Ericsson

## **UHF**

---

18x Vertex Standard

## **VHF RADIOTELEPHONES**

2 x Sailor fixed VHF/DSC Model RT 5022, pilothouse

2x Icom IC-M502A VHF. 1 crew mess, 1 tender garage

6x handheld Icom Model IC M88

## **GMDSS**

Sailor HF SSB 250W Model HC 4500

3x Emergency handheld SP3300

## **TELEPHONE EXCHANGE**

Panasonic KXTDA-200

## **INTERCOM SYSTEM**

Panasonic

---

## **NAVIGATION EQUIPMENT**

---

Overhead compass, Cassens & Plath MAGNETIC COMPASS

2 x Anschutz type STD 22 GYRO COMPASS

1 x Anschutz Naupilot type NP 2015 AUTOMATIC PILOT

Sperry Marine Naviknot III LOG Furuno Color model FCV 1100L ECHO SOUNDER

## **RADAR**

Radar 1, Furuno 2127 X band

Radar 2, Furuno 2137 S band

2X Hatteland Radar displays 23.1 inch

Transas (2014 chart upgrade) CHART PLOTTER

2x MX Marine 420 DGPS NCR-333 NAVTEX

Brookes & Gatehouse type Hydra 2000 WIND INSTRUMENTS

## **OTHER**

Kahlenberg Auto ships whistle type M5 11A – 2 x wing control – 1 x Barograph

Furuno BR 500 BNWAS bridge navigational watch alarm system

Furuno AIS Model FA 150

Raymarine Model 430 Loudhailer

## **DECK EQUIPMENT**

---

2 x Steen electric ANCHOR WINDLASS

2 x Steen electric AFT WARPING CAPSTANS

2 x 6 shackles/165m/540ft GROUND TACKLE

## **BOAT CRANE & DAVITS**

Gilbert & Schmalriede GMBH 800Kg/1,764Lbs Safe Working Load (SWL)

Cradle launch & recovery for tender

Jetski davit

Aljo hydraulic PASSERELLE

YACHT TEC Side Boarding Ladder hydraulic (starboard side)

Carlisle & Finch 500 watt 2 speed Model MPS 440 SEARCHLIGHT

Sundeck Fore & Aft AWNING

Hoesch Colorado JACUZZI

---

## AUDIO/VISUAL ENTERTAINMENT SYSTEMS

---

9 x Panasonic TVs (Owner , main & upper saloon, Sun deck, Bridge deck aft, VIP cabin, Staff cabin, Captain's cabin & crew lounge 7 x Sharp TVs (lower deck guest cabins, Owners office, Library and Engineer) 15 monitors ( Owners bathroom, crew cabins and Galley)

SeaTel Satellite receiver and distribution system throughout

**DVD PLAYERS** - Each guest cabin, Owner, Captain, Crew Mess and cabins, Main saloon and Upper saloon have BluRay Centralised Kaleidescape on demand hard drive (movies and music) 14 x Kaleidescape movie/music hard drives (Owner cabin, Main & Upper saloons, Sundeck, Bridge deck aft, VIP cabin, lower guest cabins (x4), Staff & Captain cabins, crew mess and engineer. Pandora. BluRay Players located Main and Upper Saloon. 14 x Kaleidescape movie/music players.

Ipad/Crestron + Autocharging docking stations throughout

Wireless and LAN access points throughout

---

## DOMESTIC EQUIPMENT

---

### MAIN GALLEY

Blendtec Blender

Miele dishwasher

Liebherr Refrigerator and Freezer - large

Liebherr refrigerator x 3

Rational oven

MKLN twin deep fryer

MKN induction range top

MKN ceramic range top

MKN salamander

MKN flat top

Panasonic microwave

Paco Jet ice-cream maker

Plate warmer

Vorwerk thermomix

Robot coupe processor

Magimix mixer

## **CREW**

Panasonic microwave

Liebherr refrigerator/freezer

Miele dishwasher

Magimix coffee machines

## **LAUNDRY**

5 x Miele washing machines

5 x Miele tumble dryers

Miele professional roller ironing machine

3 x irons

## **PANTRIES**

Liebherr refrigerator/freezer

Manitowoc ice maker x 2

Miele dishwasher x 2

Cimbali and Boniparte coffee machines

**SUNDECK**

Manitowoc ice maker

Refrigerated drawers

**MAIN DECK**

Manitowoc ice maker x 1

Small refrigerator

Two wine refrigerators in Dining room

**BRIDGE DECK**

Manitowoc icemaker x 2

Refrigerated drawers

Liebherr refrigerator

**TANK DECK**

2 x Liebherr wine fridges

Walk-in Freezer and Refrigerator

Liebherr Refrigerator/freezer (Crew mess)

**CABINS**

4 x refrigerators (1 x VIP cabin, 1 x Master, 1 x office and 1 x guest cabins foyer)

---

**OTHER EQUIPMENT**

---

**SHIP'S SAFES**

---

Owners, Captain and each guest cabin

## TENDERS & WATERSPORTS EQUIPMENT

1 x 6.0m (24.2ft) Nautica with 250hp Yamaha outboard

1 x 4.2m (13.86t) Zodiac SOLAS approved rescue boat with 25hp Yamaha engine,)

4x Yamaha waverunners.

## Exclusions

---

A list of various owners' personal belongings and artwork are not included in the sale of this yacht.

## Исключения

---

При продаже яхты исключаются личные вещи владельца.

## Отказ от ответственности

---

Компания предоставляет описание судна или яхты добросовестно, но не может гарантировать точность этой информации, а также не ручается за техническое состояние. Покупатель должен проинструктировать своих агентов или оценщиков исследовать представленную информацию более подробно, по собственному желанию. Продажа судна или яхты, изменение цены или снятие с продажи будет происходить без предварительного уведомления.



# ФОТОГРАФИИ

**Dining**



**Main Salon**



**Foyer**



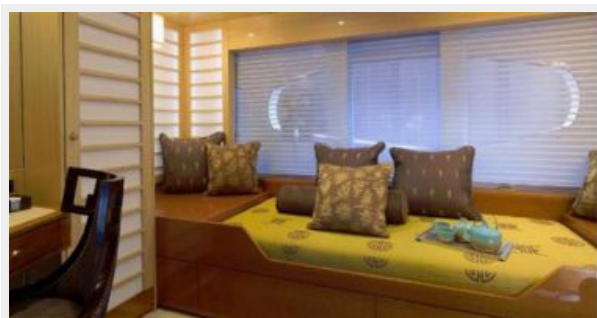
**Master Stateroom**



**Master Stateeroom**



**Private Cabin w/in Master**



**Head**



**Head**



**Entry to Lower Deck**



**Guest Head**



**Bridge**



**Entry to Skylounge**



**Skylounge**



**Skylounge**



**Aft Deck**



**VIP Guest**



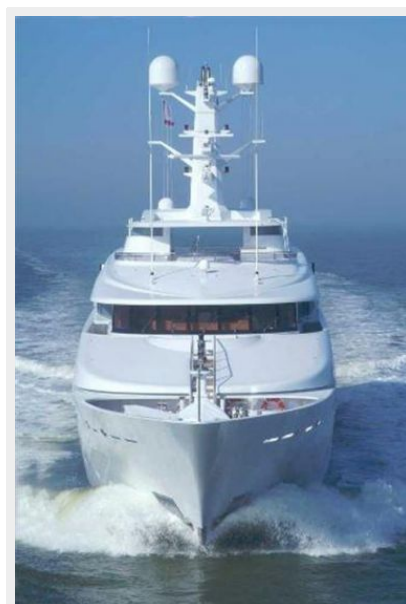
**VIP Guest**



**Running**



**Running**



**Running**



## LayoutLayout



## Layout



# КОНТАКТЫ

---

Андрей Шестаков (Andrey Shestakov) – ведущий яхтенный брокер отдела продаж яхт и судов компании Shestakov Yacht Sales Inc. Официальный представитель Shestakov Yacht Sales Inc. для русскоговорящих клиентов в центральном офисе компании в Майами/Форт Лодердейл/Флорида/США.

## Контактная информация

---

Email: [andrey@shestakovyachtsales.com](mailto:andrey@shestakovyachtsales.com)

Web: [shestakovyachtsales.com](http://shestakovyachtsales.com)

## Телефоны

---

Краснодарский край: **+7(918)465-66-44**

США, Майами, Флорида: **+1(954)274-4435**

## Время работы

---

Понедельник – Суббота: **9:00 - 21:00**  
EDT

Воскресенье: **Закрито**

## Адрес

---



Harbour Towne Marina, 850 NE 3rd St,  
STE 213, Dania, FL 33004