

HAKUNA MATATA — PERI YACHTS



Builder: PERI YACHTS

Year Built: 2011

Model: Motor Yacht

Price: PRICE ON APPLICATION

Location: Italy

LOA: 123' 10" (37.74m)

Beam: 26' 0" (7.90m)

Max Draft: 8' 3" (2.50m)

Cruise Speed: 16 Kts. (18 MPH)

Max Speed: 20 Kts. (23 MPH)

Our experienced yacht broker, Andrey Shestakov, will help you choose and buy a yacht that best suits your needs **HAKUNA MATATA — PERI YACHTS** from our catalogue. Presently, at Shestakov Yacht Sales Inc., we have a wide variety of yachts available on our sale's list. We also work in close contact with all the big yacht manufacturers from all over the world.

If you would like to buy a yacht **HAKUNA MATATA — PERI YACHTS** or would like help answering any questions concerning purchasing, selling or chartering a yacht, please call **+1(954)274-4435**

TABLE OF CONTENTS

| | |
|------------------------------|---|
| TABLE OF CONTENTS | 2 |
| SPECIFICATIONS | 3 |
| Basic Information | 3 |
| Dimensions | 3 |
| Speed, Capacities and Weight | 3 |
| Accommodations | 3 |
| Hull and Deck Information | 4 |
| Engine Information | 4 |
| PHOTOS | 5 |
| CONTACTS | 9 |
| Contact details | 9 |
| Telephones | 9 |
| Office hours | 9 |
| Address | 9 |

SPECIFICATIONS

Basic Information

Category: Motor Yacht

Sub Category: Semi-Displacement

Model Year: 2011

Year Built: 2011

Country: Italy

Fly Bridge: Yes

Cockpit: Yes

Dimensions

LOA: 123' 10" (37.74m)

LWL: 107' 10" (32.85m)

Beam: 26' 0" (7.90m)

Max Draft: 8' 3" (2.50m)

Speed, Capacities and Weight

Cruise Speed: 16 Kts. (18 MPH)

Cruise Speed RPM: 2160 Kts.

Cruise Speed Range: 1850

Max Speed: 20 Kts. (23 MPH)

Max Speed RPM: 2375 Kts.

Displacement: 306442.54418 Pounds

Gross Tonnage: 280 Pounds

Water Capacity: 858.559169 Gallons

Fuel Capacity: 9774.365924 Gallons

Fuel Consumption: 179.63699536 Gallons

Accommodations

Total Cabins: 5

Sleeps: 12

Crew Sleeps: 7

Hull and Deck Information

Hull Material: Composite Fiberglass

Hull Designer: Dixon Yacht Design

Exterior Designer: Dixon Yacht Design

Interior Designer: Scaro Design

Engine Information

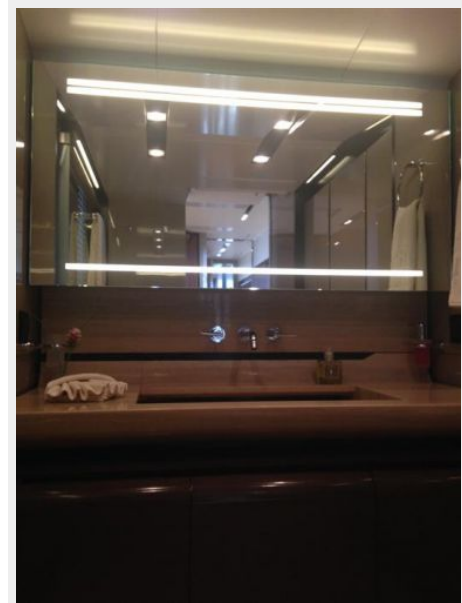
Manufacturer: MTU

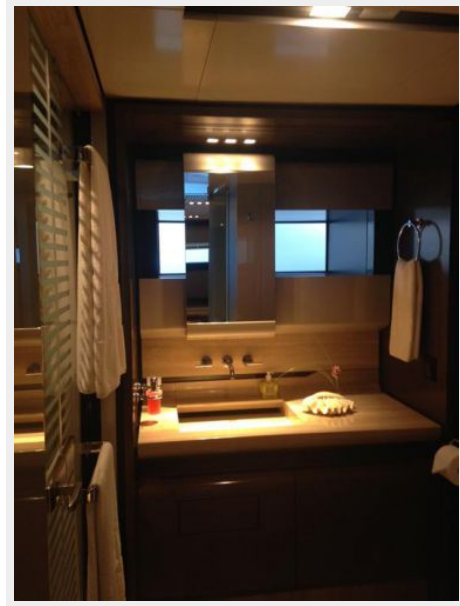
Model: 16V 2000 M92

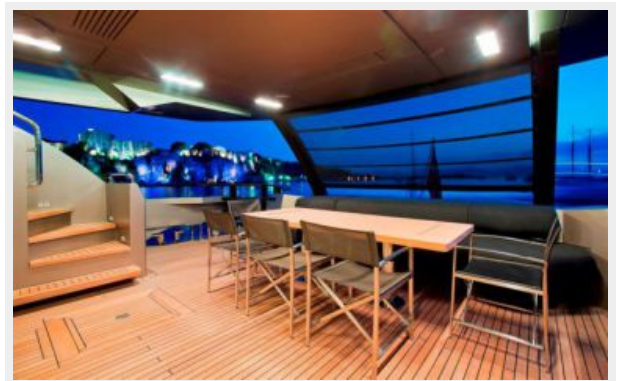
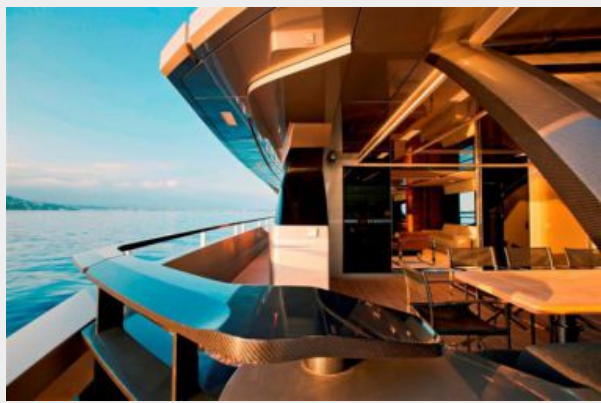
Fuel Type: Diesel/Electric

PHOTOS









CONTACTS

Andrey Shestakov, leading yacht broker of the sales department of Shestakov Yacht Sales Inc. Shestakov Yacht Sales Inc., the official representative of the Miami/Fort Lauderdale FL headquarters.

Contact details

Email: andrey@shestakovyachtsales.com

Web: shestakovyachtsales.com/en/

Telephones

USA: +1(954)274-4435

Office hours

Monday – Saturday: **9:00 - 21:00** EDT

Sunday: **closed**

Address



Harbour Towne Marina, 850 NE 3rd St,
STE 213, Dania, FL 33004