

NONE — DUFOUR



Builder: DUFOUR

Year Built: 2012

Model: Cruising Sailboat

Price: PRICE ON APPLICATION

Location: United States

LOA: 36' 0" (10.97m)

Beam: 11' 10" (3.61m)

Max Draft: 7' 2" (2.18m)

Max Speed: 8 Kts. (9 MPH)

Our experienced yacht broker, Andrey Shestakov, will help you choose and buy a yacht that best suits your needs **none — DUFOUR** from our catalogue. Presently, at Shestakov Yacht Sales Inc., we have a wide variety of yachts available on our sale's list. We also work in close contact with all the big yacht manufacturers from all over the world.

If you would like to buy a yacht **none — DUFOUR** or would like help answering any questions concerning purchasing, selling or chartering a yacht, please call **+1(954)274-4435**

TABLE OF CONTENTS

| | |
|-------------------------------|----|
| TABLE OF CONTENTS | 2 |
| SPECIFICATIONS | 4 |
| Overview | 4 |
| Basic Information | 4 |
| Dimensions | 4 |
| Speed, Capacities and Weight | 4 |
| Accommodations | 4 |
| Hull and Deck Information | 5 |
| Engine Information | 5 |
| DETAILED INFORMATION | 6 |
| Accommodations | 6 |
| Sails & Rigging | 6 |
| Electronics | 6 |
| Engine | 7 |
| Dimensions | 7 |
| Additional Equipment | 8 |
| Disclaimer | 8 |
| Exclusions | 8 |
| Disclaimer | 8 |
| PHOTOS | 9 |
| At dock | 9 |
| Side deck | 9 |
| Galley stove with oven | 9 |
| Wine rack | 9 |
| Table storage | 9 |
| Interior-manufacturer's photo | 9 |
| Head-manufacturer's photo | 10 |
| Berth-manufacturer's photo | 10 |

| | |
|-----------------------------------|-----------|
| Raymarine E9 w/Sirius Weather A/S | 10 |
| Hot water tank | 10 |
| Removable cockpit table | 10 |
| Cockpit table folded | 10 |
| Windless | 11 |
| Flat deck furler | 11 |
| Volvo D2-40F | 11 |
| H3000 Brain | 11 |
| Light Air | 12 |
| CONTACTS | 13 |
| Contact details | 13 |
| Telephones | 13 |
| Office hours | 13 |
| Address | 13 |

SPECIFICATIONS

Overview

This is the first Dufour 36P to come on the market in North America! Winner of Sailing World magazine's Crossover Boat of the Year 2013. Winner of European Yacht of the Year 2013.

Equipped with B&G sailing instruments and North sails she ready to go.

Basic Information

Category: Cruising Sailboat

Model Year: 2012

Year Built: 2012

Country: United States

Dimensions

LOA: 36' 0" (10.97m)

LWL: 33' 6" (10.21m)

Beam: 11' 10" (3.61m)

Max Draft: 7' 2" (2.18m)

MFG Length: 36' 0" (10.97m)

Speed, Capacities and Weight

Max Speed: 8 Kts. (9 MPH)

Displacement: 14109 Pounds

Water Capacity: 26 Gallons

Holding Tank: 12 Gallons

Fuel Capacity: 24 Gallons

Accommodations

Total Cabins: 2

Total Berths: 4

Sleeps: 6

Total Heads: 1

Hull and Deck Information

Hull Material: Fiberglass

Hull Finish: Plastic

Engine Information

Engines: 1

Manufacturer: Volvo

Model: D2-40F

Engine Type: Inboard

Fuel Type: Diesel

DETAILED INFORMATION

Accommodations

Access to the forward cabin is through two large opening door. When they are open it make the interior feel like a much larger boat. She had an enormous V Berth measuring 6'10" by 6' 6" With large storage area underneath. Port and Starboard Hanging Lockers with selves and shoe storage below. An overhead opening Hatch with Ocean Options retractable screens and sun shades. In fact all deck hatches come equipped with these screens and shades.

Moving aft to the Main Salon there are matching Port and Starboard settees. Each long enough to be used as Sea Berths. The center line mounted table has wine storage and a locker for Dry Goods. Starboard leaf folds down and the Port leaf is adjustable.

Aft on the Portside is the L shaped Galley. Containing the 2 burner stove with oven. A large top opening refrigerator with 12volt refrigeration. Across the cabin to starboard is a proper forward facing Navigation Station. Complete with storage for the Laptop and easy operation of the Raymarine E9 chart plotter.

The aft cabin is to Port contains a double berth with opening deck hatch and an opening port for ventilation. A hanging locker with selves and storage underneath the berth.

The head is to starboard, aft of the Nav Station. It contains an electric head with hot and cold pressure water at the sink. Aft of the head is an enormous storage area. for sails and other equipment.

Sails & Rigging

MAIN SAIL:

North Sails Marathon Series 100 Full Batten Main with lazy jacks and North Quick Cover

JIB:

North Marathon Series 100 107% Roller Furling Jib with white sun cover

Spinnaker:

North Norlon 75 Cruising A symmetrical with Dousing Sock

Electronics

Full B&G H3000 Hydra System includes:

(3) 20/20's mounted on Mast

(1) GFD Pilot control on Starboard side forward of helm.

(1) GFD Multi Display Port side forward of helm

Raymarine E9 Muti Function Plotter mounted at Nav Station with Sirius Weather and AIS receiver

ICOM 504 VHF coupled with AIS and RAM Mic in cockpit

Engine

Volvo D2-40F Optional larger 40HP engine. with SailDrive and two blade folding prop

Dimensions

LOA - 36'

LWL - 33' 6"

Beam - 11' 10"

Displacement - 14,109 lbs.

Ballast - 4188 lbs.

Mast Height - 57' 8" (does not include B&G mast wand)

I - 46' 7"

J - 13' 3"

J (Pole Out) - 17'

P - 45' 11"

E - 14' 9"

Total Upwind sail area 776 sq.ft.

PHRF - New England 78

PHRF - Narragansett Bay 72

IRC 1.031

Additional Equipment

(6) Fenders - (6) Dock lines - (1) Boat Hook - (1) Life Sling

(1) 30 Amp Shore Power Cord - (1) USCG Safety Package

Disclaimer

The Company offers the details of this vessel in good faith but cannot guarantee or warrant the accuracy of this information nor warrant the condition of the vessel. A buyer should instruct his agents, or his surveyors, to investigate such details as the buyer desires validated. This vessel is offered subject to prior sale, price change, or withdrawal without notice

Exclusions

Owner's personal belongings.

Disclaimer

The Company offers the details of this vessel or yacht in good faith but cannot guarantee or warrant the accuracy of this information nor warrant the condition of the vessel. A buyer should instruct his representatives, agents, or his surveyors, to investigate such details as the buyer desires validated. This vessel or yacht is offered subject to prior sale, price change, or withdrawal without notice.

PHOTOS

At dock



Side deck



Galley stove with oven



Wine rack

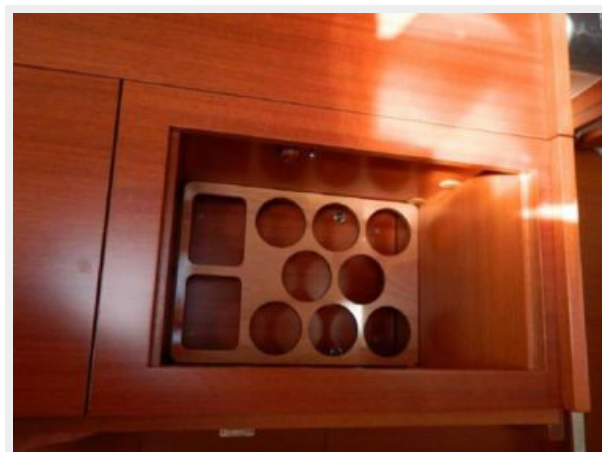
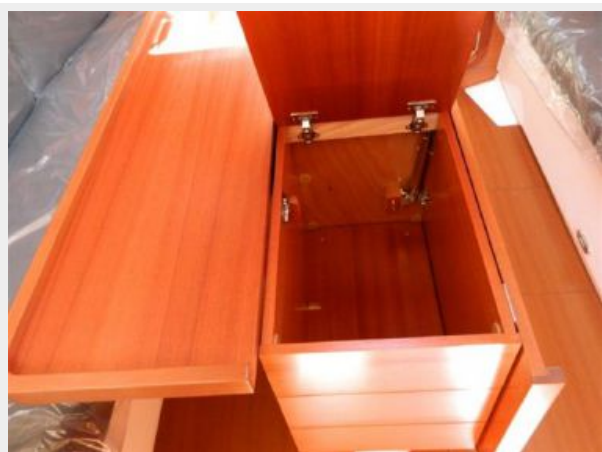


Table storage



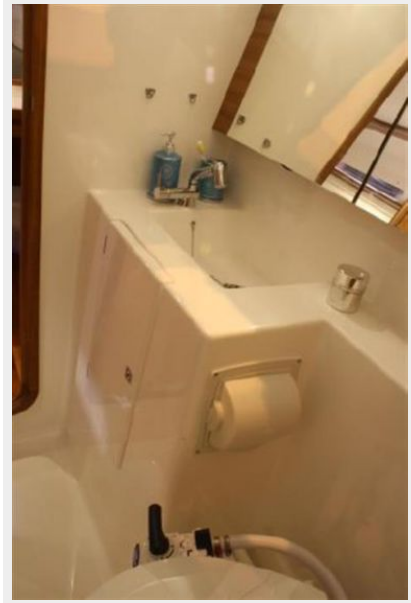
Interior-manufacturer's photo



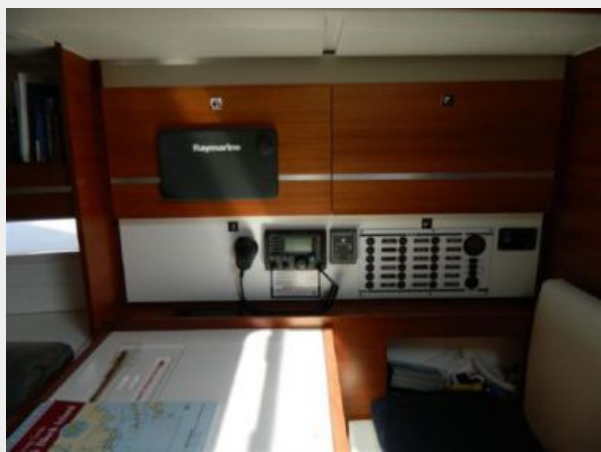
Berth-manufacturer's photo



Head-manufacturer's photo



Raymarine E9 w/Sirius Weather A/S



Hot water tank



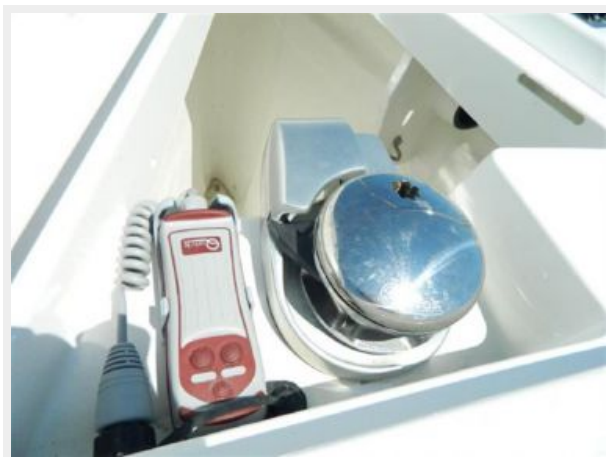
Removable cockpit table



Cockpit table folded



Windless



Flat deck furler



Volvo D2-40F



H3000 Brain



Light Air



CONTACTS

Andrey Shestakov, leading yacht broker of the sales department of Shestakov Yacht Sales Inc. Shestakov Yacht Sales Inc., the official representative of the Miami/Fort Lauderdale FL headquarters.

Contact details

Email: andrey@shestakovyachtsales.com

Web: shestakovyachtsales.com/en/

Telephones

USA: +1(954)274-4435

Office hours

Monday – Saturday: **9:00 - 21:00** EDT

Sunday: **closed**

Address



Harbour Towne Marina, 850 NE 3rd St,
STE 213, Dania, FL 33004