

OUR TIME — MAINSHIP



Builder: MAINSHIP

Year Built: 2008

Model: Cruiser

Price: PRICE ON APPLICATION

Location: United States

LOA: 34' 0" (10.36m)

Beam: 14' 2" (4.32m)

Max Draft: 3' 4" (1.02m)

Our experienced yacht broker, Andrey Shestakov, will help you choose and buy a yacht that best suits your needs **Our Time — MAINSHIP** from our catalogue. Presently, at Shestakov Yacht Sales Inc., we have a wide variety of yachts available on our sale's list. We also work in close contact with all the big yacht manufacturers from all over the world.

If you would like to buy a yacht **Our Time — MAINSHIP** or would like help answering any questions concerning purchasing, selling or chartering a yacht, please call **+1(954)274-4435**

TABLE OF CONTENTS

TABLE OF CONTENTS	2
SPECIFICATIONS	4
Overview	4
Basic Information	4
Dimensions	4
Speed, Capacities and Weight	4
Accommodations	4
Hull and Deck Information	4
Engine Information	5
DETAILED INFORMATION	6
Upper Helm	6
Electronics & Electrical	6
Miscellaneous	6
Additional Outfitting	7
Optional Equipment	7
Salon	8
Forward Cabin	8
Galley	8
Head	8
Additional Equipment	9
Deck	9
Disclaimer	9
Exclusions	10
Disclaimer	10
PHOTOS	11
CONTACTS	17
Contact details	17
Telephones	17

Office hours	17
Address	17

SPECIFICATIONS

Overview

Options include 2 ZOne AC/ Reverse cycle heat, 9KW Kohler Generator. Lower Helm, Bow Thruster & Stern Thruster, Convertible Sofa, Raymarine E-80 Radar & GPS displays at the Upper Helm. 4 Side Flybridge Enclosure. Flat Screen TV/DVD in Salon. TV in Forward Cabin.

Basic Information

Category: Cruiser

Model Year: 2008

Year Built: 2008

Country: United States

Fly Bridge: Yes

Cockpit: Yes

Dimensions

LOA: 34' 0" (10.36m)

Beam: 14' 2" (4.32m)

Max Draft: 3' 4" (1.02m)

Speed, Capacities and Weight

Water Capacity: 70 Gallons

Holding Tank: 34 Gallons

Fuel Capacity: 250 Gallons

Accommodations

Total Cabins: 1

Total Heads: 1

Hull and Deck Information

Hull Material: Fiberglass

Engine Information

Engines: 1

Manufacturer: Yanmar

Fuel Type: Diesel

DETAILED INFORMATION

Upper Helm

- Ray Marine E-80 GPS/ Chart Plotter
- Radar w/ E-80 Display
- Standard Horizon VHF
- Compass
- Ray 218DSC VHF Radio
- 4 Speaker Stereo/CD player on Bridge
- Summer Galley w/ Propane Grill, Refrigerator, & Sink
- Raymarine AutoPilot ST 70
- Danforth Compass

Electronics & Electrical

- AC/DC Converter- 30AMP
- Battery Safe Switches
- Bonding System Switches w/ Zinc Anode
- Circuit Breakers (AC/DC)
- Color-Coded Wiring Harnesses
- 2 Electric Bilge Pumps w/ Auto Switch
- GFCI Protection Throughout
- High Water Bilge Alarm w/ 4000 GPH
- Emergency Bilge Pump
- Interior Lights- 12V

Miscellaneous

- Bronze Struts & Rudders
- Engine Alarm Systems
- Fire Extinguisher System
- Freshwater Colling on Engine & Generator
- Racor Primary & Secondary Fuel Filters
- Fuel Gauges
- Hot & Cold Pressurized Water System
- Hydraulic Steering
- Brass Seacocks on Underwater Thru-Hull Fittings
- Sea Strainers for Engine- A/C, Generator, Head
- Stainless Steel Shaft
- Bennett Trim Tabbs- Hydraulic

- 250 Gallon Welded Aluminum Fuel Tank

Additional Outfitting

- 35 lb Plow Type Anchor
- 50' Chain & 150' 5/8 Nylon 3 Strand Rode
- 13' Anchor line snubber 5/8 nylon w/ Galvanized Hook
- 6 Dock Lines
- 2 Large Fenders
- Electric Horn
- 2 Fire Extinguishers
- Flare Kit
- 8 Life Vests
- Navigation Lights

Optional Equipment

- 2 Zone A/C with Reverse Cycle Heat
- Bow & Stern Thruster- 7HP
- Bimini w/ Full Canvas Package
- Convertible Sofa
- Dripless Shaft Log
- Flybridge Propane Grill
- Internal Sea Strainer
- Saltwater Anchor Washdown
- Swin Platform w/ ladder
- Windlass
- X-Change-R Oil Change System
- 9KW Diesel Generator w/ Sound Shield
- Lower Helm Station
- Quiet Flush Head System
- Flybridge Stereo
- Forward berth Flat Screen TV
- 2 Salon Chairs
- Custom Bridge Sunshades
- 3 Helmseats
- Back up Camera
- Trim Tabs
- Salon VHF Remote
- 2 Fold up Chairs
- Handholds on Salon Ceiling
- 2 Bar Stools

- Opening Front Windows
- Freshwater Window Squirters
- 1 Intelliam HD Satellite TV System

Salon

- Teak & Holly sole Installed
- Cherry Interior
- Double Freedom Doors to Cockpit w/ Screen
- 15" Flat panel TV/CD/DVD
- Full Windshield
- Halogen Lighting
- Opening Center Windshield
- Convertible Sofa
- Stereo System w/ CD/DVD Player

Forward Cabin

- 2 Cedar Lined Hanging Lockers
- 2 HD Reading lights
- Opening Hatch w/ Screen
- Queen Berth w/ Innerspring mattress
- Flatscreen TV/CD/DVD

Galley

- Microwave Oven
- Oversized galley Sink
- 2 Burner Range
- Refrigerator/ Freezer
- Trash Bin
- Underhead Counter Storage
- Corian Countertops
- Designer Faucet

Head

- Molded Fiberglass Head for Durability & Easy Cleaning
- Built in Vanity
- Electric Toilet w/ Holding Tank

- Mirror
- Hot & Cold Shower
- Shower Sump Pump
- Waste Tank Monitor

Additional Equipment

- Macerator w/ overboard Discharge
- Reverse Polarity Indicator
- TV Antenna
- TV/Telephone Dockside Connection
- 50' TV cable for Dockside Cable
- 6 Gallon Water Heater
- Water Tank Monitor
- 2 50', 30amp Shorepower Cords

Deck

- Custom 316L SS Anchor Locker Bow Rail
- 6 Person Bridge Seating Area
- 2 Bow, 2 Stern, 2 Spring Cleats
- Cockpit Storage
- Cockpit, Bridge, & Ddeck Courtesy Lights
- Dockside Water Connection
- Electronic Controls; Throttle & Shift
- Engine hour Meter w/ Electronic Engine Monitor
- Engine Instrumentation: Tachometer, Voltmeter, Oil Pressure, & Temperature
- Folding Rear Mast
- High Density Rub Rail w/ SS Insert
- Hinged Companionway Door
- Molded Steps to Bridge
- Custom 316L SS Safety Rails
- Sampson Post
- Folding table in Bridge
- Venting Center Windshield
- Venturi Windshield- Flybridge

Disclaimer

While we attempt to display current and accurate data, this listing may not reflect the most recent

transactions or may contain occasional data entry errors. Selling agent makes no warranties, express or implied, regarding the content or availability of the products described herein. All inventory listed is subject to availability and prior sale. Please consult selling agent for details. Prices are quoted for the USA only and may not include transportation, taxes, or other applicable charges. Photographs may be representative only and may vary somewhat from the actual items offered for sale. We will not be responsible for inaccurate data obtained from our site. Please check with your local dealer to ensure that you have the latest information available. Information on this web site could include technical inaccuracies or typographical errors. Changes may be periodically made to the information or the products herein. Questions or comments regarding these policies may be directed to website hosting agent.

Exclusions

Owner's personal belongings.

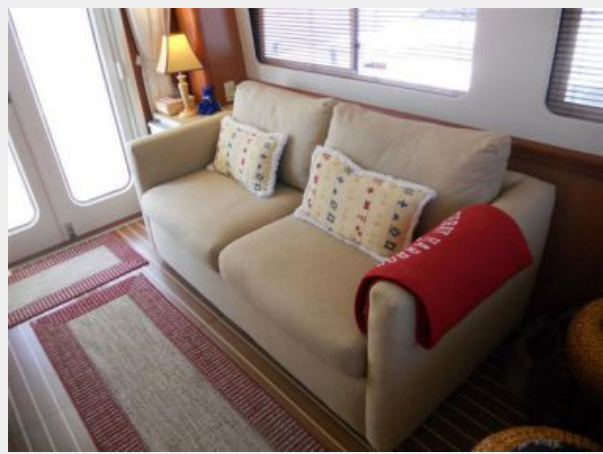
Disclaimer

The Company offers the details of this vessel or yacht in good faith but cannot guarantee or warrant the accuracy of this information nor warrant the condition of the vessel. A buyer should instruct his representatives, agents, or his surveyors, to investigate such details as the buyer desires validated. This vessel or yacht is offered subject to prior sale, price change, or withdrawal without notice.

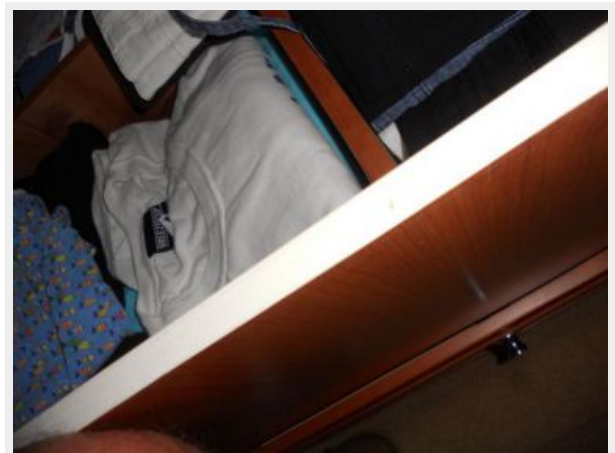
PHOTOS

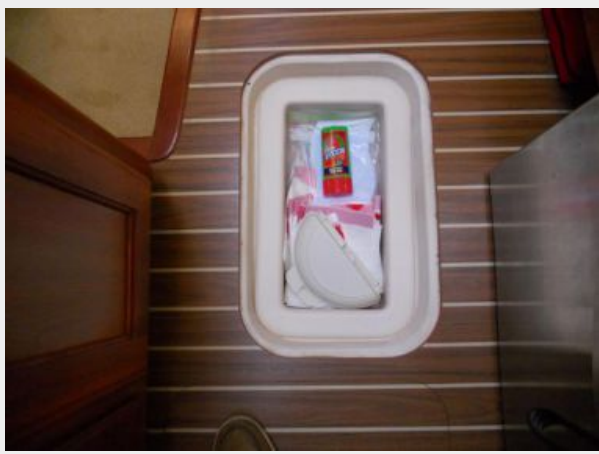
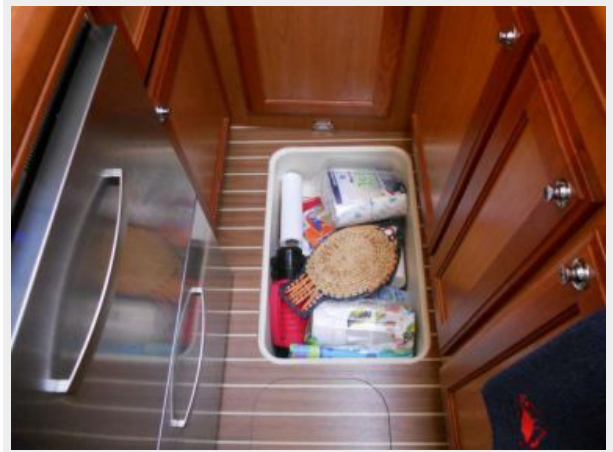












CONTACTS

Andrey Shestakov, leading yacht broker of the sales department of Shestakov Yacht Sales Inc. Shestakov Yacht Sales Inc., the official representative of the Miami/Fort Lauderdale FL headquarters.

Contact details

Email: andrey@shestakovyachtsales.com

Web: shestakovyachtsales.com/en/

Telephones

USA: +1(954)274-4435

Office hours

Monday – Saturday: **9:00 - 21:00** EDT

Sunday: **closed**

Address



Harbour Towne Marina, 850 NE 3rd St,
STE 213, Dania, FL 33004