

## BUCKSHOT — VIKING



**Builder:** VIKING

**Year Built:** 2003

**Model:** Sport Fisherman

**Price:** PRICE ON APPLICATION

**Location:** United States

**LOA:** 50' 0" (15.24m)

**Beam:** 16' 4" (4.98m)

**Cruise Speed:** 34 Kts. (39 MPH)

**Max Speed:** 39 Kts. (45 MPH)

Our experienced yacht broker, Andrey Shestakov, will help you choose and buy a yacht that best suits your needs **BUCKSHOT — VIKING** from our catalogue. Presently, at Shestakov Yacht Sales Inc., we have a wide variety of yachts available on our sale's list. We also work in close contact with all the big yacht manufacturers from all over the world.

If you would like to buy a yacht **BUCKSHOT — VIKING** or would like help answering any questions concerning purchasing, selling or chartering a yacht, please call **+1(954)274-4435**

---

# TABLE OF CONTENTS

---

TABLE OF CONTENTS	2
SPECIFICATIONS	4
Overview	4
Basic Information	4
Dimensions	4
Speed, Capacities and Weight	5
Accommodations	5
Hull and Deck Information	5
Engine Information	5
DETAILED INFORMATION	6
Salon	6
Galley	6
Master Stateroom	6
Master Stateroom Head	7
Guest Stateroom	7
Guest/Day Head	7
Command Bridge	7
Electronics & Navigation	8
Cockpit	8
Deck & Hull Equipment	8
Tower & Fishing Equipment	9
Engines and Machinery	9
Disclaimer	10
Exclusions	10
Disclaimer	10
PHOTOS	11
CONTACTS	18
Contact details	18

---

Telephones	18
Office hours	18
Address	18

---

---

# SPECIFICATIONS

---

## Overview

---

"BUCKSHOT" is a fully loaded , towered, 2 stateroom/2 head, 50 Viking Open Express Sportfisherman Powered with low hour (2000 Hours) MAN 1050HP, 10 cylinder engines. (NOTE: Major MAN 1,000 hour service performed at 1,750 hours in May 2013)

She was painted in the fall of 2012 and shows well. Current owner is moving up and ready to sell.

### BROKER REMARKS:

Built on the same hull as the as the popular 50 Viking Convertible- one of the most successful fishing boats ever- with a wide 16'4" beam, cored hullsides and a well flared bow, the 50 OPEN is a beautifully styled as she is functional. Her unobstructed cockpit is Huge, and the raised command bridge, with it's centerline helm, L-Lounge and triple helm seats, is the focal center of the boat. Belowdecks her lush twin stateroom interior is an appealing blend of high gloss teak woodwork, Corian countertops and quality hardware and appliances. There is a convenient day head located just inside the cabin entrance to starboard. Among her many fishing amenities, she features 2 in deck fishboxes,a big livewell, a custom tackle center with sink and freezer, fresh and saltwater washdowns and a transom door.

Her engine room, accessed directly from the cockpit, is one of the best in the business with excellent all around access and her Twin MAN 1050's will cruise in mid 30's and attain a top end speed of close to 40 knots.

---

## Basic Information

---

**Category:** Sport Fisherman

**Sub Category:** Open

**Model Year:** 2003

**Year Built:** 2003

**Country:** United States

**Vessel Top:** 2359

---

## Dimensions

---

**LOA:** 50' 0" (15.24m)

**Beam:** 16' 4" (4.98m)

---

## Speed, Capacities and Weight

---

**Cruise Speed:** 34 Kts. (39 MPH)

**Max Speed:** 39 Kts. (45 MPH)

**Displacement:** 55700 Pounds

**Water Capacity:** 208 Gallons

**Fuel Capacity:** 805 Gallons

---

## Accommodations

---

**Total Cabins:** 2

**Total Heads:** 2

---

## Hull and Deck Information

---

**Hull Material:** Fiberglass

**Hull Configuration:** Modified V-Hull

**Hull Color:** White

---

## Engine Information

---

**Engines:** 2

**Manufacturer:** MAN

**Model:** 2840LE 403

**Engine Type:** Inboard

**Fuel Type:** Diesel

---

## DETAILED INFORMATION

---

### Salon

---

- L-Shaped sofa to port with storage below
- Teak Hi/Lo table, electric
- Teak and holly sole
- Furuno Navtex NX-300
- JVC stereo system
- Sony VCR player
- Marantz DVD player
- JVC 21" TV
- Overhead hatch with shade
- Teak steps with storage
- Central Vacuum outlet

### Galley

---

- Pull out drawer and shelf storage
- Indirect lighting
- Sharp Carousel convection oven
- Teak and holly sole
- Molded corian counter tops
- Molded in corian sink
- Water tank level gauge
- Sub Zero refrigerator with teak face
- Concealed two burner cook top
- Sub Zero freezer with teak face

### Master Stateroom

---

- Centerline queen berth with storage below
- Cedar lined hanging locker
- Stereo speakers
- Carpeting throughout
- Outboard shelf storage port and starboard
- JVC TV
- Overhead hatch with screen
- Private access to ensuite head

---

## Master Stateroom Head

---

- Teak and holly sole
- Stall shower
- Vacuflush head system
- Molded corian counter tops
- Mirrored vanity medicine chest
- Teak vanity below

---

## Guest Stateroom

---

- Twin upper and lower berths, lower berth has storage below
- Phone jack
- Private access to guest head
- Cedar lined hanging locker
- Stereo speakers
- Overhead hatch with screen

---

## Guest/Day Head

---

- Vacuflush head
- Stall shower
- Teak and holly sole
- Access to guest cabin and companionway
- AC/DC main switching panel
- Molded corian counter tops
- Mirrored medicine chest

---

## Command Bridge

---

- (3) Teak Bluewater helm chairs with teak foot rests and covers
- Helm pod with single lever controls
- Teak deck
- Additional tackle center
- Sink and sprayer
- Refrigerator
- (2) Overhead hatches
- (3) Overhead hand rails-Powder coated white
- Miya Epoch US9 teaser reels
- Red and white overhead lighting
- Stereo system

---

## Electronics & Navigation

---

- FURUNO NAVNET CHARTPLOTTER/ NAVIGATION CENTER /VX2 BLACK BOX
- KEP 15"GLASS DISPLAY
- FURUNO 25KW-72 MILE RADAR
- STAND ALONE FURUNO FCV 1100L W/3KW TRANSDUNCER
- SIMRAD AP 22 autopilot
- B&G Network guard
- (2) ICOM 502 VHF radios
- Clarion stereo control
- B&G Network guard
- Mortiz alarm panel
- Sat phone

---

## Cockpit

---

- Indirect lighting
- Gunnel mounted rod holders
- (4) Clearing rod holders in tower legs
- Fresh and salt water wash downs
- Glendinning cablemaster
- Engine room access with locks
- Cockpit fly cover
- Transom hause pipes
- Mister system, overhead and under gunnel
- Bluewater Teak fighting chair with rocket launcher and cover
- Transom door with flip gate
- In deck fish box
- In floor live bait well
- In floor ice storage for chipper
- Bait freezer
- Cockpit sink with sprayer
- Tackle center
- Stern speakers

---

## Deck & Hull Equipment

---

- Transom door with flip gate
- Under water lights
- Swim ladder
- Fender track port and starboard mounted under rub rail
- Anchor locker on foredeck



- **Snow white gel coat hull color**
- **Teal green boot top and bottom paint**
- **Bennett trim tabs**
- **Aluminum bow rail**
- **Windlass**
- **Stainless anchor chute**

---

## **Tower & Fishing Equipment**

---

### **Tuna Tower**

- **Palm Beach Towers installed 2004-05**
- **Clearing rod holders on tower legs**
- **(2) Bungee staffs for flags**
- **(6) Rod rocket launcher, aft hardtop**
- **Molded standing platform and hardtops**
- **Molded in navigational lights**
- **Molded in aft and forward spreader lights**
- **Port and starboard hand rails**
- **Rupp Outriggers with power rigger hydraulic system**
- **Rupp center rigger**
- **Bluewater teak fighting chair with rocket launcher**
- **Fishbox**
- **Miya Epoch US9 teaser reels**
- **(6) Rod rocket launcher, aft hardtop**
- **Bluewater teak fighting chair with rocket launcher**
- **Fishbox**
- **Molded in overhead rod locker**
- **Overhead Hardtop rod locker, in bridge deck**
- **Bluewater teak fighting chair with rocket launcher**
- **Fishbox**
- **Eskimo ice machine**
- **Spotlight**
- **Fresh water wash down spigot**

---

## **Engines and Machinery**

---

- **MAJOR 1,000 hour MAN service done in May 2013 @ 1750 Hours**
- **MAN 2840LE 403 1050 engines with 2013 hours use**
- **Onan 17Kw Generator**
- **MAN engine remote starts and stop switches**
- **Dual racor 1000's fuel filters**
- **Emergency bridge pump pick up bilge**

- **Eskimo ice machine**
- **Village marine watermaker**
- **Dry out bilge pump**
- **Oil change system**
- **Power steering system**
- **High water alarm**
- **110 & 12V lighting**
- **Hot water heater**
- **Sentry battery charger**
- **Dual power steering pumps**
- **Dripless shaft seals**
- **Sea Fire FM-200 fire system**
- **Manual engine gauges**
- **Air Conditioning with Reverse Cycle Heat**
- **Command Bridge Air Conditioning/Heat**
- **Glendenning Cablemaster**

## **Disclaimer**

---

The Company offers the details of this vessel in good faith but cannot guarantee or warrant the accuracy of this information nor warrant the condition of the vessel. A buyer should instruct his agents, or his surveyors, to investigate such details as the buyer desires validated. This vessel is offered subject to prior sale, price change, or withdrawal without notice.

## **Exclusions**

---

Owner's personal belongings.

## **Disclaimer**

---

The Company offers the details of this vessel or yacht in good faith but cannot guarantee or warrant the accuracy of this information nor warrant the condition of the vessel. A buyer should instruct his representatives, agents, or his surveyors, to investigate such details as the buyer desires validated. This vessel or yacht is offered subject to prior sale, price change, or withdrawal without notice.

# PHOTOS



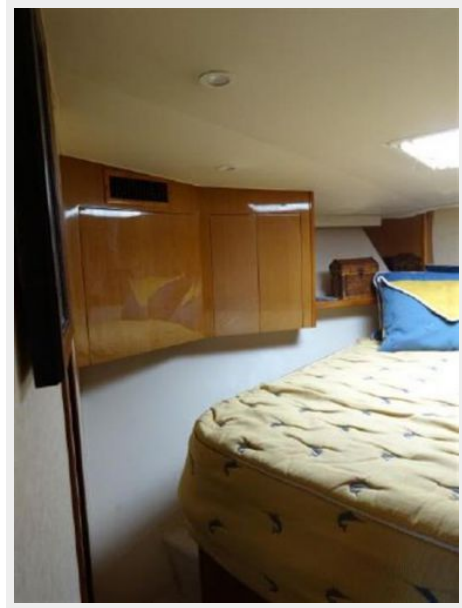


















---

# CONTACTS

---

Andrey Shestakov, leading yacht broker of the sales department of Shestakov Yacht Sales Inc. Shestakov Yacht Sales Inc., the official representative of the Miami/Fort Lauderdale FL headquarters.

---

## Contact details

---

Email: [andrey@shestakovyachtsales.com](mailto:andrey@shestakovyachtsales.com)

Web: [shestakovyachtsales.com/en/](http://shestakovyachtsales.com/en/)

---

## Telephones

---

USA: +1(954)274-4435

---

## Office hours

---

Monday – Saturday: **9:00 - 21:00** EDT

Sunday: **closed**

---

## Address

---



Harbour Towne Marina, 850 NE 3rd St,  
STE 213, Dania, FL 33004