

SECOND LOVE — WESTPORT



Builder: WESTPORT

Year Built: 2009

Model: Motor Yacht

Price: PRICE ON APPLICATION

Location: United States

LOA: 112' 0" (34.14m)

Beam: 23' 10" (7.26m)

Min Draft: 5' 6" (1.68m)

Cruise Speed: 24 Kts. (28 MPH)

Max Speed: 26 Kts. (30 MPH)

Our experienced yacht broker, Andrey Shestakov, will help you choose and buy a yacht that best suits your needs **SECOND LOVE — WESTPORT** from our catalogue. Presently, at Shestakov Yacht Sales Inc., we have a wide variety of yachts available on our sale's list. We also work in close contact with all the big yacht manufacturers from all over the world.

If you would like to buy a yacht **SECOND LOVE — WESTPORT** or would like help answering any questions concerning purchasing, selling or chartering a yacht, please call **+1(954)274-4435**

TABLE OF CONTENTS

TABLE OF CONTENTS	2
SPECIFICATIONS	4
Overview	4
Basic Information	4
Dimensions	4
Speed, Capacities and Weight	4
Accommodations	5
Hull and Deck Information	5
Engine Information	5
DETAILED INFORMATION	6
Main Salon	6
Galley	6
Master Stateroom	7
VIP Guest Stateroom Forward	7
Queen Guest Stateroom	8
Twin Guest Stateroom	8
Crew Quarters	8
Pilothouse	9
Electronics	9
Flybridge Equipment	10
Tenders	10
Aft Deck	10
Foredeck Equipment	10
Upgrades and Features	11
Electrical Equipment	11
Engine & Mechanical Equipment	12
Remarks	13
Exclusions	13

Exclusions	13
Disclaimer	14
PHOTOS	15
CONTACTS	18
Contact details	18
Telephones	18
Office hours	18
Address	18

SPECIFICATIONS

Overview

Immaculate condition!

SECOND LOVE is truly the most highly customized 112' Westport built to date. Her custom Robin Rose interior features several upgrades to include custom cherry joinery, onyx stonework and newly designed improvements to her layout. She has very low hours on her MTU/DDC 16V-2000s. Additional upgrades include state-of-the art audiovisual system, air conditioned engine room along with the new AB 14' RIB tender and all of the large yacht options one would expect, including Naiad digital stabilizers, twin Northern Lights 65 KW generators, American bow thruster and 2 Sea Recovery 1200 GPD watermakers. This vessel is turn-key and ready for immediate delivery! Please note the build certificate on this vessel shows built in November 2008, however, the hull stamp and model is a 2009 Westport. DYSID:2934344

Basic Information

Category: Motor Yacht	Sub Category: Raised Pilothouse
Model Year: 2009	Year Built: 2009
Country: United States	

Dimensions

LOA: 112' 0" (34.14m)	Beam: 23' 10" (7.26m)
Min Draft: 5' 6" (1.68m)	

Speed, Capacities and Weight

Cruise Speed: 24 Kts. (28 MPH)	Max Speed: 26 Kts. (30 MPH)
Max Speed Range: 2500 Kts.	Water Capacity: 1025 Gallons
Holding Tank: 600 Gallons	Fuel Capacity: 5500 Gallons

Accommodations

Total Cabins: 4

Total Berths: 5

Total Heads: 8

Captain Cabin: True

Crew Cabin: 4

Crew Berths: 4

Crew Sleeps: 5

Crew Heads: 1

Hull and Deck Information

Hull Material: Fiberglass

Hull Color: White

Hull Designer: Jack Sarin

Exterior Designer: Westport

Interior Designer: Robin Rose

Engine Information

Engines: 2

Manufacturer: MTU

Model: 16V-2000 1850 Orig Hours

Engine Type: Inboard

Fuel Type: Diesel

DETAILED INFORMATION

Main Salon

SECOND LOVE combines, modern styling, responsive performance and extraordinary luxurious accommodations. She differs dramatically from her sister ship' featuring a highly customized Robin Rose interior using cherry joinery, custom onyx finishes and custom soft goods and wall covering throughout. Her four stateroom layout features a king-size master with his and her bath, VIP suite along with two guest staterooms all exquisitely finished and appointed. Her main salon and dining area are spacious with generous seating and large window provide panoramic views. The formal way and gourmet galley are separated to starboard by a custom swing-out art niche for privacy. To complete the main deck, her oversized aft deck features alfresco dining for twelve along with built-in wet bar with entertainment center to port. The enormous pilothouse provides generous seating, 270 degree visibility and state-of-the-art electronics along with a 42" hi-lo flat screen TV. Her flybridge features a custom hard top, drop-down custom 42" HD Toshiba TV, bar, Jacuzzi, lounge seating and boat deck for water toys. SECOND LOVE is by far the most highly customized 112' Westport available. · Formal entry on starboard side w/onyx flooring, marble/granite trim, custom art niche, privacy door from salon, faux finished doors, large artwork piece to port, custom LED lighting & cedar-lined hanging locker · Custom Fabrica carpeting throughout (NEW) · Custom Robin Rose interior throughout · Raised buffet w/onyx stone top, port & stbd, & lower side buffets · Custom upholstered sectional sofa w/built-in storage · (2) Occasional upholstered chairs · Glass/wood cocktail table · End tables portside · Game table w/2 chairs · Entertainment center w/Toshiba 60" flat screen pop-up TV · Bar w/combo U-line refrigerator, storage, mirror, polished stainless steel round sink, chrome faucet & fixtures · Large 4-panel polished s/s electric sliding aft door, weather tight & direct bonded glass · Onyx floor in port & stbd companionway & at salon entry · Custom window treatments w/electric roman shades & valances · Custom Majilite faux leather headliner · Custom brushed Nickel hardware throughout Formal Dining Area: · Mahogany dining table top & base w/8 wood frame dining chairs (accommodates up to 10 for dining) · (2) Mirrored Lucite storage cases for formal dining service · Custom forward bulkhead w/onyx top, mirrors, beveled wood trim, sconces & lights · Custom raised ceiling w/recessed lighting, custom fixture, Onyx, wood trim & rope lighting · Recessed LED lighting · New Majilite faux leather headliner Day Head, Starboard: · Custom bow front vanity w/green Onyx surface & marble border · Brushed Nickel framed mirror · Custom overheard mirror · Custom wall covering · One-touch head · Jado Brushed Nickel plumbing fixtures · Mike & Ally custom accessories · Upgraded joinery throughout

Galley

Sub-Zero double door refrigerator & double drawer freezer · Dacor 5-burner touch top cook top · Dacor oven · Microwave/convection oven w/vent hood · New Hoshicaki Cubed icemaker · Kohler extra deep s/s sink w/Kohler cutting board & Grohe soap dispenser · Grohe Lady Lux faucet · Granite countertops w/ogee edge · New Bosch Silence Plus 44 Dishwasher · Asco disposal · 2 New Thermador warming drawers · Cherry cabinets including cabinets along starboard wall

under windows · Dinette settee & dining table w/ built in storage · Perimeter soffit w/crown molding & rope light · Hot water dispenser · (3) Custom chair/stools · Center island design · Toshiba 42" HD flat screen TV · Upgraded brushed Nickel drawer pulls throughout · Custom built-in spice rack · Wood flooring · Walk-in pantry is located off port companionway w/storage, full laundry center w/Miele washer & dryer, Sub-Zero · under counter refrigerator, wine cooler & custom overhead storage cabinet

Master Stateroom

· California King berth which lifts up on gas springs for storage below · Custom designed spread, shams & pillows · New Upholstered leather weaved headboard & bed base · Custom overhead mirror above bed · Walk-in cedar lined closet, cedar, automatic light, closet rod & cedar shelf w/ keeper including locking charter locker closet · Digital safe in walk-in closet · Custom settee w/storage below · (2) End table cabinets · (2) Raised nightstands w/drawer · Onyx nightstand tops & bulkhead feature · Custom dresser design w/cabinet, drawers and locking charter locker · Recessed LED room lights · Reading lights · Indirect rope accent lighting under berth & above soffits · Special lighting outboard at hull side · Overhead rope lights above berth · Opening port lights with screens & privacy covers · Double door entryway with 1 3/8 cherry frame w/madrone burl veneer panels · New Toshiba 50" HD LED TV · Art niche w/artwork · Built-in book shelf to port · Custom window treatments w/Sohji screens & black out shades · Brushed Nickel hardware · New Carpet

Master Stateroom Bath: · Headhunter Royal Flush Hydro Vac single touch toilets · All Onyx shower w/Grohe thermostat & Grohe fixtures · Euro style frameless etched glass shower doors for privacy & Brushed Nickel fixtures · Steam shower · Built-in medicine chests, port & stbd · Mirrored ceiling throughout · Full width vanities, port & stbd · Custom vanity benches · Onyx counters w/ogee edge · Linen lockers, port & stbd · Clothes hamper, port & stbd · (2) Kohler Vintage sinks · Jado Brushed Nickel plumbing fixtures throughout · Brushed Nickel hardware · Onyx tile flooring · New Mother of Pearl wall coverings

VIP Guest Stateroom Forward

· Queen berth w/custom upholstered headboard · Cherry pedestal bed base recessed for rope lighting, drawer & bunk raises on gas springs to storage below · Custom spread & shams · (2) Built-in bookcases at headboard · Vanity/makeup desk w/custom bench · Built-in dresser, stbd · Toshiba HD flat screen TV · Solid cherry doors framed w/madrone burl veneer panels · Recessed LED room and reading lights · Indirect rope accent lighting under berth & above soffit · Bronze mirrors on fwd bulkhead above headboard · Clear full-length mirror on wardrobe door · Walk-in closet w/aromatic cedar, automatic light, closet rod & cedar shelf w/keeper & safe · New Custom wall covering · Brushed Nickel hardware · New Carpeting VIP Guest Bath: · Headhunter Royal Flush Hydro Vac toilet · Custom shower w/Euro-style frameless tempered glass door & Grohe fixtures · Sealed shower light · Bates & Bates Teri sink · Linen cabinet · Vanity w/marble top & ogee edge · Framed mirror above vanity · Recessed LED room lights & vanity lighting ·

Marble floor · Solid cherry door frame w/madrona burl veneer panels · Jado Brushed Nickel plumbing fixtures · Brushed Nickel hardware

Queen Guest Stateroom

· Queen berth w/custom upholstered headboard · Cherry pedestal bed base recessed for rope lighting, drawer & bunk raises on gas springs to storage below · Custom spread & shams · (2) Built-in bookcases at headboard · Vanity/makeup desk w/custom bench · Built-in dresser, stbd · Toshiba HD flat screen TV · Solid cherry doors framed w/madrona burl veneer panels · Recessed LED room and reading lights · Indirect rope accent lighting under berth & above soffit · Bronze mirrors on fwd bulkhead above headboard · Clear full-length mirror on wardrobe door · Walk-in closet w/aromatic cedar, automatic light, closet rod & cedar shelf w/keeper & safe · Custom wall covering · Brushed Nickel hardware · New Carpeting · VIP Guest Bath: · Headhunter Royal Flush Hydro Vac toilet · Custom shower w/Euro-style frameless tempered glass door & Grohe fixtures · Sealed shower light · Bates & Bates Teri sink · Linen cabinet · Vanity w/marble top & ogee edge · Framed mirror above vanity · Recessed LED room lights & vanity lighting · Marble floor · Solid cherry door frame w/madrona burl veneer panels · Jado Brushed Nickel plumbing fixtures · Brushed Nickel hardware

Twin Guest Stateroom

· Twin berths w/upholstered headboard, cherry pedestal recessed for rope lighting & drawer, inboard berth is · movable w/ability to convert to queen berth · Custom designer spread & shams · Recessed LED room & reading lights · Indirect rope lighting above soffit · Bronze mirrors on aft bulkhead above headboard · Aromatic cedar-lined wardrobe w/automatic light, closet rod, cedar shelf w/keeper & clear full-length mirror on · outside of wardrobe door · Three-drawer movable nightstand · Entertainment center w/cherry doors & 5-drawer dresser below · Toshiba HD flat screen TV · Opening port lights w/screen & black out shades · Custom designed blinds & drapes · Marble counters w/backsplash & ogee edge · Solid cherry door frame · Brushed Nickel hardware · New Carpeting · Private Guest Bath: · Headhunter Royal Flush Hydro One Touch Vac toilet · Custom shower w/Euro-style frameless glass doors w/Grohe fixtures · Sealed shower light · Kohler Vintage sink · Clothes hamper · Vanity w/marble counter & backsplash w/waterfall edge · Wall mirror above vanity · Recessed LED room lighting & vanity lighting · Marble flooring · Solid cherry door frame w/madrona burl veneer panels · New Carpeting

Crew Quarters

· Updated Upgraded Design for 5-6 Crew: · Captain's Cabin · Full size berth w/innerspring pillow top mattresses & storage below · Built-in clock shelf · Captain's desk w/solid surface top & stool · Built-in dresser · Upper cabinet above berth · 110V AC recessed LED lights & 24V DC reading lights · Aromatic cedar-lined wardrobe w/automatic light, double doors, closet rod, · cedar shelf w/keeper, safe & clear full-length mirror on inside wardrobe door · Solid cherry door frame

w/madrone burl veneer panels · LG Flat screen TV · Direct TV · Crew Quarters - New Design: · (3) Crew cabins each w/4 twin extra wide berths w/innerspring pillow top mattresses & storage below · 110V AC recessed LED room lights & 24V DC reading lights · Solid cherry door frame w/madrone burl veneer panels · Aromatic cedar-lined wardrobe w/automatic light, double doors, closet rod, cedar shelf w/keeper and clear full length mirror on inside wardrobe door · (4) LG flat screen TV's with Direct TV · Crew Lounge - Custom Design converted to extra crew quarters: · Custom Built-in Sea Frost either/or fridge/freezer chest · Custom Extra Wide Pullman Bed · Custom Drawers and Cabinets · Custom Built-in pocket door for privacy · LG 40" flat screen TV · Captain/Crew Quarter Heads: · Galley Maid toilets are fresh water plumbed & discharge into holding tank · Custom molded fiberglass shower w/tempered glass doors & Grohe fixtures · Sealed shower light · Amtico commercial vinyl floor in hardwood pattern · Kohler Bolero sinks w/Grohe fixtures · Vanity & medicine cabinet · Mirror on medicine cabinet · Low voltage recessed LED room lights & vanity lighting · Solid surface counters w/simple bull nose · Solid cherry door frame w/madrone burl veneer panels

Pilothouse

· Wooden 24" destroyer type helm station wheel · MTU integrated control head engine controls · DDC/MTU engine instrumentation · Sliding hatch to flybridge · Aft bulkhead bronze mirror · Fax cabinet · Windshield mesh sun screen cover · Weems & Plath clock/barometer · Stain resistant commercial carpet · Chart drawers adjacent to console · Leather upholstered settee w/custom onyx top table w/ogee edge, s/s grab rail & custom storage below · Stidd 500SI low back helm chair · Toshiba HD 42" flat screen TV · Desk w/recessed madrone burl veneer top, solid cherry waterfall edge & stool · Custom built in full mirror length bookshelf aft of settee · Custom RTI Remotes

Electronics

· Vessel Vanguard Maintenance Program · (2) Furuno radars w/19" LCD display & repeater on flybridge · Furuno depth sounder w/15" LCD monitor · Furuno GPS in pilothouse & flybridge · Northern Airborne Technology GPIRB · Satellite phone system · Satellite TV system · Wave Cell Pro Internet/wifi system (2010) · Tellular cellular phone system · Elbex 12V DC hi-resolution color, fixed camera (aft deck, flybridge tender deck, side decks & full pan zoom tilt camera in engine room · Digital depths sounder (captain's cabin) · WX WORX Weather software · Simrad AP50 autopilot system (pilothouse & flybridge) · MaxSea and Nobletec Odyssey Navigation Software · (2) Hailer horns integrated w/VHF radios · B&G wind, depth & speed w/HS2000 full function display · Computer w/wall mounted monitor · Internet connectivity thru the satellite phone w/broadband router & 2 wireless remote access points (one fwd, one · aft) for remote connection throughout boat · (3) ICOM M602 VHF radios (2 in PH & command mic on FB) · Raytheon 53 VHF radio installed in tender · Furuno FS-1503 SSB · IntelliSea Model IS-1 (VIC) security system w/upgraded iPhone monitoring capability · SeaKey satellite security tracking system · Kramer 8x8 VGA-VXGA Matrix Switcher for interchangeable screens · NEW KVH HD-7 24" VSAT Satellite System

Flybridge Equipment

· (3) Stidd 500XL low back helm chairs w/foot rests · Kahlenberg air horn w/1/2" air strainer · Molded-in spa w/sun pad top & storage below · Sun pad w/cushions & covers · Molded settee w/cushions & hinged seating for storage below · Welded aluminum & composite mast w/electronics, anchor light & deck lighting · Composite construction hardtop covering flybridge 24v overhead lighting · Wet bar w/sink, Scotsman icemaker, GE refrigerator & propane X Large Alfresco BBQ Grill w/hood & Cover · NEW – 3 Murray Brothers Custom Swivel Bar Seats · 24" Stainless steel Destroyer type wheel · Tender lifting bridle · Hydraulic Nautical Structures 2000# Davit · Wing stations on flybridge w/electronic engine controls, synchronizer, jog lever, bow thruster control, rudder angle · Indicator, main engine start/stop & covers · Removable chocks for tender · Stainless rails around boat deck · (2) Fixed oval teak tables w/inlays · Helm station w/engine controls, engine instrumentation & electronics · Custom 1/4" Venturi in stainless frame · Built-in glass & bottle storage in bar · Additional speakers on flybridge & boat deck- Upgraded JL Audio Speakers · New Teak Flybridge · Hi-gloss overhead · New drop-down 42" Waterproof Skyvue HD TV · Direct TV, Sirius Radio, Kaliedscape – with Custom RTI Waterproof remote · Newly installed Acrylic Clear wrap-around Enclosure · New P&R Canvas Triangle Sun Shades

Tenders

· 14' Widebody AB tender w/4-stroker 70hp Yamaha O/B w/controls, VHF radio with fold down antenna, compass, depthsounder, polished s/s steel rails, transom ladder & lifting bridle, Sirius Radio installed · 2 new Yamaha 3 seater Jet skis

Aft Deck

· Custom high gloss finished overhead · Teak decks · Molded-in settee w/cushions · Custom teak hi-lo dining/cocktail table · (6) Custom resin rattan dining chairs · (2) Custom Murray Brothers swivel chairs · Custom 42" Skyvue Waterproof HD TV · (2) Spiral staircases (1 down to crew quarters & 1 up to boat deck) · Storage lockers located in bulwarks · Custom boarding gates, port & stbd · Aft deck bar w/GE icemaker, GE refrigerator, sink w/hot & cold water & storage · Additional custom lighting at settee & stairs · Canvas & covers for table, chairs & settee · Upgraded teak molding · Stainless steel safety gates · Manual passerelle · RTI Remote · JL Audio Outdoor Speakers

Foredeck Equipment

· Bow sun lounge w/vinyl cushions & cover · Bosun & storage locker · Locker w/110 outlet inside w/lights · Molded keyhole settee w/cushion & cover · Upgraded JL Audio Outdoor Speakers

Upgrades and Features

Twin MTU 16V-2000's 2200 Hours 2/2016 Custom Robin Rose interior w/new design New designed VIP stateroom layout New designed island galley Swing out niche for dining privacy Toshiba 60" HD flat screen TV Upgraded Onyx stonework throughout vessel New design master stateroom Custom charter lockers in master New design expanded crew quarters to accommodate up to 5 crew Air conditioned engine room Toshiba 42" HD flat screen TV Brushed Nickel hardware throughout Brushed Nickel faucets, fixtures in master, VIP heads & day head Fresh bottom paint (May 2014) 14' Widebody AB tender w/4-stroker 70hp Yamaha O/B w/controls, VHF radio with fold down antenna, compass, depthsounder, polished s/s steel rails, transom ladder & lifting bridle, Sirius Radio installed Speed Prop shafts, wheels, thruster – May 2014 New Zincs May 2014 New Added Thermidor Food Warmers Upgraded Navigation Computer with MaxSea Navigation chart system (June 2014) New ASEA Power Converters New P&R Canvas Triangle Sun Shades Three new Aqua Air chillers for HVAC system 2 new Yamaha 3 seater Jet skis Forward seating table addition \$30,000 worth of interior improvements including decorations, silverware, dinner settings, ect.. IPAD controlled AV system and AV system improvements

Electrical Equipment

- Twin Northern Lights 65KW Generators w/compound mounts & sound shields (Port: 4900 Hrs- Stbd: 4900 Hrs) · In Sep Water temperature, oil pressure & hour meters are installed on main distribution panel in crew quarters · Remote start/stop in pilothouse PTO & hydraulic pump installed on both gens for full redundancy · IntelliSea Model IS-1 vessel information & controls system w/added iPhone text message capability · AGM cell type batteries; (2) banks of 8-D, 225 amp batteries, wired in series for starting main engines (total of 4) & (2) 8-D, 225 amp batteries, one for gens starting, 24V battery bank for ship's service & 12V DC 2 8-D 225 amp battery bank for electronics · Battery chargers include 70 amp 12V DC for electronics, 95 amp 24V DC for ship's service bank, 40 amp 24V DC for main engine bank & 40 amp 12V DC for gen bank · (2) 100 Amp – 240V Single Phase shore feeds w/Glendinning cablemaster cord reels at port bustle · TV & phone outlet located at port bustle w/100' TV/phone cord · Crestron system through wireless control; lighting controls w/switched & dimmed Crestron automation · (3) King heater/defrosters on pilothouse console · (3) 12V red DC chart lights (one at navigator's area, one at captain's desk & one at dash flat over stairs to main deck) · Ritchie Globe Master F-600 compass in pilothouse, B&G display on flybridge · Distribution panels have engraved faceplates · Lightning protection w/hull Dyna plate & lightning antenna · Carlisle Finch 200 Watt Xenon searchlight located on mast w/dual controls · Main distribution panel located in crew area, designed to be functional w/all necessary circuit breakers & transfer switches & to provide proper operation of AC & DC circuit · NEW INSTALLED 2/1/2014 ASEA Gohz Converters allowing for multiple shore power hook-ups · Single Phase – 2 cords · 208 3 Phase – 2 cords · 480 3 Phase – 1 Cord

Engine & Mechanical Equipment

· MAIN ENGINES: Twin MTU 16V2000 engines, rated at 2000 hp, 4-station MTU/DDC controls , integrated station selection & shifter control, synchronizer & underwater exhaust 2200 Hours
2/2016 · AIR COMPRESSOR: 110V 2 hp compressor located in the engine room will operate horn, gasoline tank and general engine room air supply · AIR CONDITIONING: Chilled water system with air handlers in salon, pilothouse, galley, all staterooms and crew area. Make-up air system is included. Chiller unit includes variable frequency drives (15 tons) · BILGE MONITORING: 8 Remote - mounted bilge float switches and VIC alarms on all float switches · BILGE PUMPS: Emergency fixed bilge pump system includes two electric 230V AC pumps with 1 1/2" PVC lines to each major compartment with check valve, strainers and priming system · BONDING: All bronze thru-hulls to be bonded with #8 or heavier wire and connected to transom zincs and shaft wipers · BOW THRUSTER: American Bow Thruster 16" 40 hp hydraulic single prop with four station controls · FIRE SUPPRESSION: Engine room has an FM200 fire suppression system with manual/automatic controls. An additional fire suppression is located on the electrical distribution panel · FRESHWATER SYSTEM: Two 220V AC pumps and one 24V DC backup pressure pump with tank · FUEL FILTERS: One Sea Pro 8 for each main engine and one Sea Pro 50 for each generator · FUEL AND WATER FILL PIPES: Fuel fills with dual fill/vent pipes vented overboard for fast filling. A second, smaller vent, vented overboard is provided for normal operation. Two fills for water tanks · FUEL TANK: 1/4" 5086 alloy aluminum with dual fills and standard vents. VIC monitoring and sight tube level indicators, 5500 gallon capacity · FUEL GAUGES: Sight tubes located in engine room and VIC monitoring · FUEL TRANSFER SYSTEM: Fuel transfer pump with flow meter and timer · GAS TANK: 100 Gallon gas tank under hatch on swimstep including an air operated diaphragm pump and fill nozzle LUBE OIL CHANGE SYSTEM: 60 Gallon lube oil tank with deck fill, fill spigot, 60 gallon lube oil waste tank with deck fill, drain spigot and portable extraction pump with quick disconnects on pump and all engines · RUDDERS: Cast urethane foil-shape rudders with stainless stocks · RUDDER BEARINGS/SEALS: Fiberglass sleeves with Tides bearings, dripless seals and spare seals in carrier · PROPELLERS: 48" Michigan Nibral 5-blade custom wheels · PLUMBING: Water tanks are aluminum with interior epoxy coating and an approximate tank capacity of 1,000 gallons. VIC monitoring system and sight tube level indicators. · HOT WATER HEATERS: One 80 gallon and one 38 gallon. · HOT AND COLD WATER SHOWER: In starboard locker on swimstep. · FRESHWATER WASH-DOWN: With quick disconnects on fore deck, boat deck and aft deck. · BELOW DECKS GRAYWATER SYSTEMS: Two graywater boxes fitted with screens; also, supply and discharge lines for all showers. Forward & aft sump tank will have sump pumps and 24V DC backup pumps. · HOLDING TANK: Tank is composite with an inspection hatch. Tank is electronically monitored and has an approximate capacity of 600 gallons. Headhunter MSD treatment with PLC touch screen and Auto-Chlor treats black and grey water. · SHAFTS: Four inch Aquamet 22-H.S · SHAFT LOG & PACKING GLANDS: Shaft logs, one-piece fiberglass construction w/Tides dripless packing gland w/water crossover from engines · STRUTS: Cast bronze of Vee design · STABILIZER SYSTEM: Naiad model #353 with 12 sq. ft. fins, single-station control, oil level warning, unloading valve kits & dual pumps & gauge kits · WINDSHIELD WIPERS/WASHERS: Exalto windshield wipers with electronic control panel with synchronization and washers for three wipers · STEERING: Jastram power steering with dual

engine-driven pumps and four steering stations: Pilothouse, Flyridge, and Port & Starboard wing stations on Flybridge. Stations include indicator, start/stop buttons & covers. · WATERMAKER: Two Sea Recovery SRC AWC 1400 GPD ea (2800 GPD total) New Membranes 10/2013 · ZINC ANODES: Installed on hull at transom and secured on stainless steel studs and tied to the bonding system (Shaft zincs are included) New 06/2014 · Air Conditioned engine room · Removable wood floorboards w/grey tile vinyl floor covering · 8-Drawer tool box w/tools · 18' Self coiling air hose w/quick disconnect · Pacific Coast Marine watertight door · Storage cabinet on aft port bulkhead above workbench · Storage base cabinet on aft stbd wall · (2) Storage cabinets on fwd bulkhead · Stainless steel workbench w/4" vise

SECOND LOVE PERFORMANCE DATA Port Engine RPM Water Temp Oil Pressure Drive Oil
Volts Slow 575 152 352 50 26.3 Cruise 1 1950 167 366 94 26.3 Cruise 2 2175 174 372 97 26.3
Full 2400 178 372 92 26.3

Stbd Engine RPM Water Temp Oil Pressure Drive Oil Volts Slow 575 151 350 47 25.9 Cruise 1
1950 165 362 94 25.9 Cruise 2 2175 171 368 95 25.9 Full 2400 176 368 89 25.9

RPM Fuel Burn GPH % Load Speed Port / Stbd Port / Stbd knots 1950 48 / 49 60 / 60 20.2 2175
70 / 70 73 / 74 22.4 2250 80 / 80 79 / 80 23.7 Full 98 / 97 100 / 100 24.6

Remarks

SECOND LOVE is truly the most highly customized 112' Westport built to date. Her custom Robin Rose interior features several upgrades to include custom cherry joinery, onyx stonework and newly designed improvements to her layout. With very low hours on her MTU/DDC 16V-2000's. Additional upgrades include state-of-the art audio/visual system, air conditioned engine room along, with the new AB 14' RIB Tender, along with all of the large yacht options one would expect. These include Naiad digital stabilizers, twin Northern Lights 65 KW generators, American bow thruster, (2) Sea Recovery 1200 GPD watermakers, etc. This vessel is turn-key and ready for immediate delivery!

Please note the Build Certificate on this vessel shows built in November 2008, however, the hull stamp and model is a 2009 Westport.

Exclusions

All Art Work and Personal Effects are excluded from the sale.

Exclusions

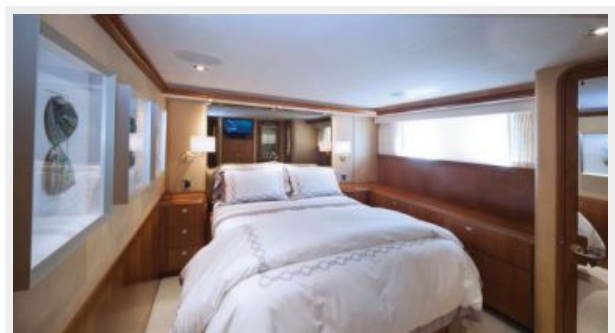
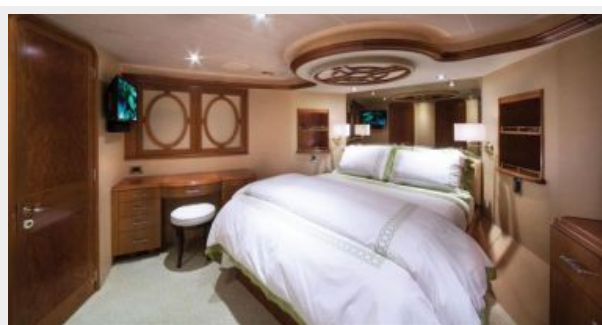
Owner's personal belongings.

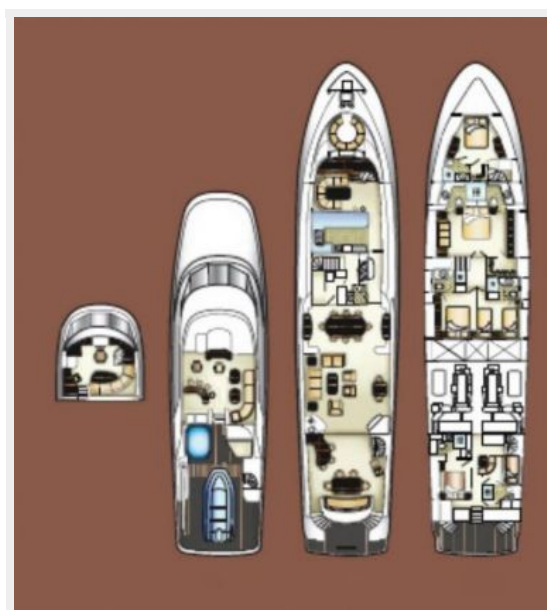
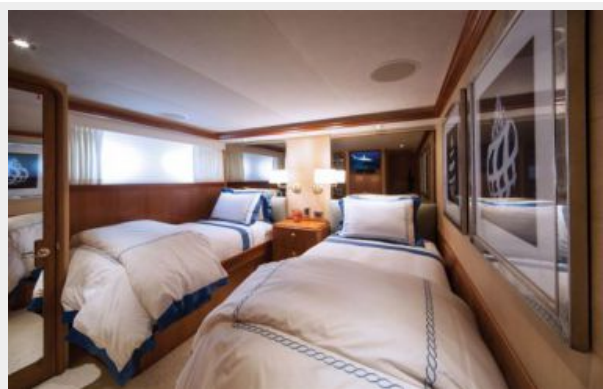
Disclaimer

The Company offers the details of this vessel or yacht in good faith but cannot guarantee or warrant the accuracy of this information nor warrant the condition of the vessel. A buyer should instruct his representatives, agents, or his surveyors, to investigate such details as the buyer desires validated. This vessel or yacht is offered subject to prior sale, price change, or withdrawal without notice.

PHOTOS







CONTACTS

Andrey Shestakov, leading yacht broker of the sales department of Shestakov Yacht Sales Inc. Shestakov Yacht Sales Inc., the official representative of the Miami/Fort Lauderdale FL headquarters.

Contact details

Email: **andrey@shestakovyachtsales.com**

Web: shestakovyachtsales.com/en/

Telephones

USA: **+1(954)274-4435**

Office hours

Monday – Saturday: **9:00 - 21:00 EDT**

Sunday: **closed**

Address



Harbour Towne Marina, 850 NE 3rd St,
STE 213, Dania, FL 33004