

PORDAVINO — AZIMUT / BENETTI



Судостроитель: AZIMUT / BENETTI

Год постройки: 2013

Модель: Моторная яхта

Цена: ЦЕНА ЯХТЫ ПО ЗАПРОСУ

Местонахождение: United States

Длина общая: 60' 0" (18.29m)

Ширина: 16' 3" (4.95m)

Макс. осадка: 4' 6" (1.37m)

Крейс. скорость: 26 Kts. (30 MPH)

Макс. скорость: 30 Kts. (35 MPH)

Купить **PORDAVINO — AZIMUT / BENETTI** а также выбрать подходящую вам яхту из нашего каталога яхт вам поможет опытный яхтенный брокер Андрей Шестаков. На сегодняшний день компания **Shestakov Yacht Sales Inc.** имеет большое количество яхт в собственном списке продаж, а также тесно сотрудничает со всеми крупными яхтенными производителями по всему миру.

Для того чтобы купить яхту **PORDAVINO — AZIMUT / BENETTI** а также проконсультироваться по любому вопросу связанному с покупкой, продажей, чартером яхт позвоните по телефону **+7(918)465-66-44**.

ОГЛАВЛЕНИЕ

ОГЛАВЛЕНИЕ	2
ХАРАКТЕРИСТИКИ	4
Обзор	4
Основная информация	4
Размеры	4
Скорость, вместимость и масса	4
Размещение	5
Корпус и палуба	5
Информация о двигателе	5
ПОДРОБНОЕ ОПИСАНИЕ	6
Slideshow	6
Base & Options	6
Upgrades & Accessories	7
Additional Features	8
Overview	8
Salon	9
Galley	9
Dinette	10
Main Helm	10
Hallway/ Stairwell	11
Master Cabin	11
Master Head	11
VIP Stateroom/ Head	11
Guest Stateroom	12
Crew Cabin	12
Cockpit	12
Transom Area	13
Hull & Deck Features	13

Upper Helm/ Electronics	13
Fly Bridge	14
Engineer Room	15
Disclaimer	15
Исключения	15
Отказ от ответственности	15
ФОТОГРАФИИ	16
КОНТАКТЫ	23
Контактная информация	23
Телефоны	23
Время работы	23
Адрес	23

ХАРАКТЕРИСТИКИ

Обзор

Miami silver hull color, Sea Keeper stabilizer, Custom bridge enclosure, Xenta control w/ bow and stern thrusters and Dynamic positioning as well as Watermaker to name few of many upgrades. Tons of custom storage in master stateroom/ Head and VIP cabin PLUS galley area too.

"Pordavino" running MAN 800 engines with under 150 hours and runs great. Add Sea Keeper at sea and she handles the seas well.

Owners have added lot of upgrades and accessories listed and she is a truly turn key yacht ready to cruise the Bahamas or Keys this summer. Located in Lighthouse Point, Fl. area and easy to see.

Основная информация

Тип судна: Моторная яхта

Модельный год: 2013

Год постройки: 2013

Страна: United States

Открытая палуба мостика: Да

Размеры

Длина общая: 60' 0" (18.29m)

Ширина: 16' 3" (4.95m)

Макс. осадка: 4' 6" (1.37m)

Скорость, вместимость и масса

Крейс. скорость: 26 Kts. (30 MPH)

Макс. скорость: 30 Kts. (35 MPH)

Водоизмещение: 57600 Pounds

Вместимость воды: 166 Gallons

Вместимость сточного бака: 99 Gallons

Объем топливного бака: 740 Gallons

Размещение

Всего кают: 3

Всего коек: 6

Всего ком. состава: 2

Корпус и палуба

Материал корпуса: Fiberglass

Информация о двигателе

Двигатели: 2

Производитель: MAN

Модель: R6

Тип двигателя: Inboard

Тип топлива: Diesel

ПОДРОБНОЕ ОПИСАНИЕ

Slideshow

<http://dkphotography5526.zenfolio.com/p30054686/slideshow>

Base & Options

- Barbecue on Flybridge
- Teak on Flybridge Deck
- Teak on Side Decks
- Painted Hull
- Cockpit Chair
- Hard Top
- Wooden Floor in Dinette and Helm
- Washer-Dryer Combo Unit
- Crew Cabin with Air Conditioning
- Sofa/Bed in Salon
- Seakeeper Stabilizer (includes upgraded generator)
- Stern Thruster (8 Kw on 64)
- Bow Thruster
- Chaincounter with Control in Helm
- Raymarine E Wide Package
- Raymarine Antenna 72nm Open Array
- Add'l Control for Electric Searchlight
- Coachroof Cushions on Bow
- Double Racor Filter
- Xenta Joystick
- Black Antifouling
- Hi-gloss Finishing for External Wood
- Stitching of Sofa Settee
- UPGRADING OF DECOR
- Sunbathing Cushions on Bow
- Side Boarding Gates
- Table Decape Wood in AFT Salon
- 2 Chaises Lounges on Fly
- Salon Furniture ilo 2nd Sofa
- FWD SUNPAD COVER
- AFT BENCH SEAT COVER
- 2 TABLE COVERS
- KVH HD7 W 4 RCVRS
- BOSE LIFESTYLE SURROUND SOUND

- TV PKG
- COAST GUARD KIT

Upgrades & Accessories

- Glass Shelf in Kitchen
- Spice Rack in Kitchen
- Extended Cabinets Kitchen
- 360 degree Hinge on Washer Door
- Third Refrigerator Added- Galley
- Added Extra Electrical Outlet in Galley
- Added Map Compartment to Helm
- Added Extra Electrical on AFT Flybridge
- Added Extensive Audio and Video
 - Fusion Stereo
 - Fusion Remotes
 - Helm
 - Fly Helm
 - Cockpit
 - TV Hookup for Cockpit, Fly and Kitchen
 - New Speakers
 - Subwoofer
- WiFi Hot Spot
- Cameras
 - Engine Room (two)
 - Port AFT
 - Starboard AFT
- Marquip Stairs and Attachments
- Eisenglass
- 6 MAN Life Raft
- Xenta Remote
- Xenta Dynamic Positioning
- Stern Thruster

- Underwater Lights
 - 3 Blue on Aft Transom
 - 4 Blue on Side Windows
- HMY Beds Level 5 Mattress UPGRADES in all Staterooms
- VIP Stateroom- added large drawer under the bed
- Twin Stateroom- added insert with level 5 bed
- Modified Cabinets in Master Stateroom
- Added Closet in Master Head
- Added New Medicine Cabinet in Master Head
- Added Two Drawers- Master Bed and Couch
- Added Two Towers in Master Couch
- Raised Rail on AFT Flybridge
- Water Maker 600 GPD
- Added Extra Cleats AFT
- Added Two Rod Holders AFT
- Added Sun Shield AFT
- Skid Guards Sponsons
- Canvas Covers for All Carpet (2 in Salon)

Additional Features

- Passarelle
- Sea Keeper
- Cockpit Table
- Silver Paint

Overview

Walk onboard "Pordavino" and you will see the beautiful teak decking and open cockpit area with large custom wood table. Engine access to MAN 800 Engines through center hatch in cockpit.

Enter through large saloon doors into open floor plan with saloon seating to port, TV Cabinet to Starboard and up to Galley and Dinette area. Wood Flooring leads to center Helm with custom Helm Chair and a Full Array of Raymarine Electronics. Notice Xenta Control with Bow/ Stern Thrusters.

Down Below in Cabin Area we have three large staterooms with Full Beam Master AFT. Custom Bedding and HMC Level 5 mattresses in all Staterooms. Owner Added Lots of Custom Cabinets

and Hanging Locker Space to Increase Storage for Larger Trips. Has two nice Heads with plenty of Storage and Shower Stalls.

Head up stairwell in the Cockpit to the Large Flybridge area with Hardtop and Custom Full Enclosure. Large Seating Area to Starboard with Folding Bridge Table and Wet Bar Cabinet to Port with Electric Grill, Fridge Box, Ice Maker and Sink. Upper Helm has Full Electronics with RM E140W radar/plotter, Autopilot, ST60+ Depth/ Speed and VHF Radio.

Owners Upgraded Xenta Joy Stick with Dynamic Position Hold and Added Stern Thruster too. Fusion Stereo with Remote, Quick Chain Counter for Windlass, and Trim Tab and Searchlight Controls.

"Pordavino" had Recent Bottom Paint and Zincs, Modifications to Swim Platform and Stern Area, runs great with 800 MAN Engines. She is truly a Turn Key Yacht!!!

Salon

- Sofa Bed
- Upgraded Carpet
- Interior Carpet Runner
- Window Curtain with Blackout
- Bose Stereo with Surround Sound
- Stb Cabinet with Sofa Hi-lo 32" Samsung TV System
- BluRay Player
- Starboard Cabinet with storage- Liquor Cabinet
- L Shape Seating with Storage- Drawers pull out
- UPGRADED: Saloon Coffee Table
- Large s/s saloon Door with Sliding Deluxe Curtain
- Storage Cabinets
- Indirect/ Overhead Halogen Light
- Furniture starboard side in lieu of sofa with hi/lo TV system
- Set of Linens for the sofa bed
- Deluxe Curtains at salon door entrance
- Step Risers (salon to dinette) & Salon Door kick face in Decape Oak

Galley

- Wood Flooring
- UPGRADED: Custom Glass Counter Added
- UPGRADED: 2 Refrigerators
- Dual S/S Sink
- Large Counter Top Space- Marble Tops
- 3 Burner Cook top with Overhead Fan

- Whirlpool/ Microwave
- Large Refrigerator/ Freezer Under Counter Tops
- ADDED: Extra 110 Sockets
- Overhead Storage
- Three Storage Cabinets Below Counters
- ADDED: Additional Galley Storage in Lockers
- Water Maker
- Washer/Dryer
- Wooden Floor dinette
- Additional Refrigerator at galley with matching door
- Stainless gate between dining area and rear deck(2)

Dinette

- U Shape Seating 4-6
- Dinette Table
- Storage Below Seating
- Wood Flooring
- ADDED: 110 V Cable to Connect Cockpit TV
- Forward Seating Area

Main Helm

- CUSTOM: 68 E Lower Helm Chair with Armrests
- Center Helmseat- Leather with Full Motion
- Full Electronics
- Dual RM E 140 W
- RM ST 6002 Autopilot
- RM ST 60 + Depth/Speed
- UPGRADED: Quick Chain Counter
- UPGRADED: Seakeeper Control
- Trim Tabs
- Sea Fire Halon System
- Azimut Painted Lift Steering Wheel
- MAN Style Level/ Control
- MAN Digital Engine Display
- UPGRADED: Xenta Joystick with Bow & Stern Thruster & Dynamic Position
- Fusion Stereo Control
- VDU Gauge Package
- Chart Table with Access (switch panel)

Hallway/ Stairwell

- Carpet Runner
- Indirect Light
- Haler Washer/ Dryer Combo
- CUSTOM: 360 Hiage to Open Cabinet
- Storage Cabinet
- Cabinet with Access for 240V/ Gen Set

Master Cabin

- Set of Linens
- UPGRADED: HMC Mattresses system 5
- Carpet Runners
- Large Windows with Opening Skylights with Screen
- Bose Stereo
- Panasonic TV mounted on bulkhead with Direct TV receiver
- Queen pedestal bed w/ storage
- UPGRADED: drawers added below bed, and below settee
- Starboard settee and make up drawer
- Wood blinds
- CUSTOM: Dual cabinets added above settee
- Dual lamps mounted- bed side
- edar lined hanging locker added
- UPGRADE Decor

Master Head

- Techma Head
- Large stand up shower
- Glass sink
- CUSTOM: Vanity Cabinet
- wood flooring
- CUSTOM: Large hanging locker w/ smoked glass doors added for storage
- Azimut towel set

VIP Stateroom/ Head

- UPGRADED: HMC mattress system 5
- Queen pedestal bed
- Custom Décor

- LG flatscreen TV w/ Direct TV receiver
- Opening Deck hatch
- Hull windows w/ blinds
- 2 reading lights
- UPGRADED: Large opening drawer under bed
- carpet runners
- private access to head
- large vanity w/ overhead storage
- large shower
- Glass sink in head
- wood flooring- Head
- Azimut towels
- Forward head serves as day head too

Guest Stateroom

- Twin Beds
- UPGRADED: HMC system 5 mattress
- UPGRADED: custom filler board with mattress insert
- Samsung TV w/ Direct TV receiver
- Reading lights
- Large hanging locker
- opening port lights
- Full stand up headroom

Crew Cabin

- Access door from transom- locks
- Set of Linens
- Separate AC unit
- Head and shower
- Oversize bunk
- Opening port light
- Bed spreads and pillows

Cockpit

- Large custom wood cockpit table
- Bench seating for 4
- Teak decking
- UPGRADE: TV mounted in ceiling

- Added 2 rod holders
- aft deck speakers w/ fusion remote
- UPGRADE: Aft drop cover- mesh
- port and starboard opening side gates
- Storage locker
- UPGRADE: Marquipt sea stairs
- Halon system control
- Battery switch control
- UPGRADE: watermaker remote control

Transom Area

- hydraulic Lift
- UPGRADE: Passerelle
- Access door to crew area
- UPGRADE: Non skid step pads
- UPGRADED:7 blue underwater lights added
- Teak decking
- Transom shower
- 50 amp Glendenning cablemaster power cord
- Phone/ TV inlet
- Transom lighting

Hull & Deck Features

- UPGRADE: Teak side decks
- UPGRADE: Marquipt sea stairs
- Port/ Stb. Fuel fills
- Full length s/s run rails w/ life lines
- UPGRADE: Telescopic Electro Hydraulic Gangway 3m 260kg lifting capacity
- Windshield black mesh screen
- Side window textaline screens black mesh
- Quick full chain windlass with foot controls
- Chain washdown on bow
- reinforced welded bow rail
- bow rope chafe guards
- Freshwater fill (bow)

Upper Helm/ Electronics

- Full electronics

- E140 Raymarine wide radar/ plotter
- Raymarine VHF radio w/ speakers
- ST 6000 autopilot
- RM tri-date ST 60 depth, speed, temp
- Jabsco searchlight
- UPGRADED:Fusion stereo remote at helm
- Xenta joystick
- UPGRADED:stern thruster added to Xenta
- UPGRADED: Xenta Dynamic positioning
- VDO gauge package
- 12V plug
- Dual drink holder added
- Double wide helm seat
- Sea Fire Halon system
- UPGRADED: QUICK chain counter
- Trim tab indicators
- Dash cover
- Azimut painted steering wheel
- Remote start/stop for MAN engines
- Large forward helm locker

Fly Bridge

- UPGRADE: ACR Epirb
- UPGRADED: STEREO w/ new speakers and sub woofer
- Hard top w/ skylights
- Full bridge enclosure w/ rigid glass and 2 Isinglass roll up panels
- UPGRADE: Teak decking
- Large bridge seating area
- wood bridge table- folds
- Large aft deck seating area
- Port side wet bar cabinet w/ U line icemaker, fridge box, Kenyon electric grill, sink w/ storage
- Fusion stereo head w/ 4 speakers
- Raised rails on aft flybridge
- FULL fly bridge seating covers in white stamoid
- s/s radar pedestal on arch
- Glomex digital TV antenna
- VHF radio antenna arch
- air horns
- UPGRADE: HVH M7 SAT tv antenna and matching dummy dome
- UPGRADE: Rogue Wave WIFI antenna

Engineer Room

- MAN 800 hp engines with 125 hours
- ZF trannys
- Watermaker added
- UPGRADED: added 2 engine room cameras
- Dual racor fuel filters for main engines
- Candaria chiller system for AC
- Halon system bottles (2)
- Overhead 110v lighting
- Kohler Gen set w/ sound box
- Easy access to batteries
- Engine room ladder
- Large opening deck hatch in cockpit
- Good access to sea cocks, valves and strainer/filters for servicing

Disclaimer

The Company offers the details of this vessel in good faith but cannot guarantee or warrant the accuracy of this information nor warrant the condition of the vessel. A buyer should instruct his agents, or his surveyors, to investigate such details as the buyer desires validated. This vessel is offered subject to prior sale, price change, or withdrawal without notice.

Исключения

При продаже яхты исключаются личные вещи владельца.

Отказ от ответственности

Компания предоставляет описание судна или яхты добросовестно, но не может гарантировать точность этой информации, а также не ручается за техническое состояние. Покупатель должен проинструктировать своих агентов или оценщиков исследовать представленную информацию более подробно, по собственному желанию. Продажа судна или яхты, изменение цены или снятие с продажи будет происходить без предварительного уведомления.

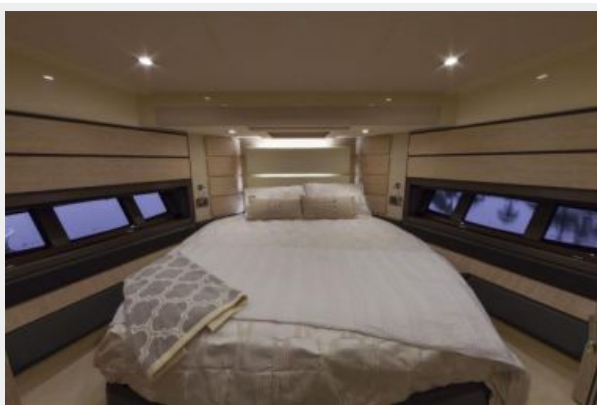
ФОТОГРАФИИ



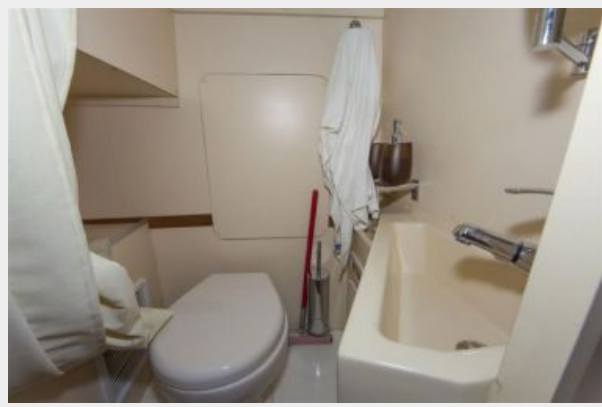












КОНТАКТЫ

Андрей Шестаков (Andrey Shestakov) – ведущий яхтенный брокер отдела продаж яхт и судов компании Shestakov Yacht Sales Inc. Официальный представитель Shestakov Yacht Sales Inc. для русскоговорящих клиентов в центральном офисе компании в Майами/Форт Лодердейл/Флорида/США.

Контактная информация

Email: andrey@shestakovyachtsales.com

Web: shestakovyachtsales.com

Телефоны

Краснодарский край: **+7(918)465-66-44**

США, Майами, Флорида: **+1(954)274-4435**

Время работы

Понедельник – Суббота: **9:00 - 21:00**
EDT

Воскресенье: **Закрыто**

Адрес



Harbour Towne Marina, 850 NE 3rd St,
STE 213, Dania, FL 33004