

## GOOD FORTUNE — SEA RAY



**Builder:** SEA RAY

**Year Built:** 2006

**Model:** Cruiser

**Price:** PRICE ON APPLICATION

**Location:** United States

**LOA:** 44' 0" (13.41m)

**Beam:** 14' 0" (4.27m)

**Max Draft:** 3' 4" (1.02m)

Our experienced yacht broker, Andrey Shestakov, will help you choose and buy a yacht that best suits your needs **GOOD FORTUNE — SEA RAY** from our catalogue. Presently, at Shestakov Yacht Sales Inc., we have a wide variety of yachts available on our sale's list. We also work in close contact with all the big yacht manufacturers from all over the world.

If you would like to buy a yacht **GOOD FORTUNE — SEA RAY** or would like help answering any questions concerning purchasing, selling or chartering a yacht, please call **+1(954)274-4435**

# TABLE OF CONTENTS

TABLE OF CONTENTS	2
SPECIFICATIONS	4
Overview	4
Basic Information	5
Dimensions	5
Speed, Capacities and Weight	5
Accommodations	5
Hull and Deck Information	5
Engine Information	5
DETAILED INFORMATION	6
Dimensions	6
Accommodations	6
Boat Highlights	6
Forward Stateroom	6
Galley	7
Forward Head and Shower	7
Mid Berth and Head	8
Hull and Deck Features	8
Technical Features	9
Cockpit Features	10
Electrical Systems	10
Generator and AC Systems	11
Windlass	11
Color	12
Exclusions	12
Disclaimer	12
PHOTOS	13
Profile	13

---

Cockpit	13
Cockpit TV	13
Sat Direct TV	13
Helm Cover and Windshield Cover	13
Bow Thruster	13
Auto Pilot	14
Helm	14
Smart Craft Display 614 Hours	14
Raymarine Hybrid Touch	14
Raymarine Hybrid Touch Radar Display	14
Stairs into Salon	14
Salon Sofa	15
Salon Sofa	15
Galley	15
Aft Cabin	15
Hydraulic Swim Platform	15
Profile	15
<b>CONTACTS</b>	<b>16</b>
Contact details	16
Telephones	16
Office hours	16
Address	16

---

# SPECIFICATIONS

---

## Overview

---

**This 2006 44' Sea Ray Sundancer is LOADED!! Owner has added great options and knows how to take care of a boat. Bring any offer!!!!** Hydraulic Swim Platform Lift \$25K option..

Bow Thruster

Sat TV KVH

Upgraded Raymarine Hybrid Touch Radar/Chart Plotter

Cockpit Air Conditioning

Bottom paint (3/14)

Complete rub and wax (5/14)

Hydraulic lift (3/14)

New batteries (4/14)

New Sat (KVH)

New Raymarine HD Radar

New E125 Hybrid Touch ( Raymarine)

New C125 Chartplotter (Raymarine)

Complete 1000 hour maintenance (4/14) \$15000.00

New cockpit Carpet (12/13)

Replaced all sea strainer hoses and intake hoses 4/13

Replaced heat exchanger and after coolers 4/14

Replaced alternator port 4/14

---

## Basic Information

---

**Category:** Cruiser

**Sub Category:** Express

**Model Year:** 2006

**Year Built:** 2006

**Country:** United States

**Cockpit:** Yes

---

## Dimensions

---

**LOA:** 44' 0" (13.41m)

**Beam:** 14' 0" (4.27m)

**Max Draft:** 3' 4" (1.02m)

---

## Speed, Capacities and Weight

---

**Displacement:** 22500 Pounds

**Water Capacity:** 100 Gallons

**Holding Tank:** 42 Gallons

**Fuel Capacity:** 335 Gallons

---

## Accommodations

---

**Total Cabins:** 2

**Total Heads:** 2

---

## Hull and Deck Information

---

**Hull Material:** Fiberglass

**Hull Configuration:** Modified V-Hull

---

## Engine Information

---

**Engines:** 2

**Manufacturer:** Cummins

**Model:** QSC 500

**Engine Type:** Inboard

**Fuel Type:** Diesel

---

## DETAILED INFORMATION

---

### Dimensions

---

LOA: 45 ft 0 in Beam: 14 ft 0 in Maximum Draft: 3 ft 4 in Deadrise: 19 ° at Transom Dry Weight: 22500 lbs

### Accommodations

---

Number of single berths: 2 Number of double berths: 2 Number of cabins: 2 Number of heads: 2

### Boat Highlights

---

Large integral/extended swim platform with heavy-duty stainless-steel swim ladder

- Flush-mount skylight w/retractable sunshade – salon
- Swivel bucket helm seat with flip-up thigh-rise bolster Companion bench with molded fiberglass storage
- Cockpit wet bar with sink and faucet, Corian® countertop, stainless-steel handrail, trash receptacle, and storage cabinet
- U-shaped aft seating with storage
- Separate shower and head for master stateroom
- Electrically actuated engine compartment hatch
- Standard generator with sound shield
- Standard SmartCraft™ Instrumentation and System View
- Standard LCD drop-down flatscreen TV with DVD in salon 12V AM/FM single CD with six-disc CD changer, eight (8) speakers and digital cockpit remote control
- Sirius® satellite receiver with antenna, includes 6-months of activation on Sirius Satellite Radio
- Ultraleather HP™ standard on all interior seating
- Standard VHF radio
- Optional fiberglass hardtop with full enclosure
- Water manifold system with shutoff valves
- Underwater exhaust

### Forward Stateroom

---

- Bed, Full-Size Island-Style
- w/Innerspring Mattress, Pillows,
- Sheets, Coordinated Spread &

- Drawer Storage Below
- Door, Pocket - Privacy w/Mirror
- Hanging Locker w/Light &
- Shelves - Port
- Hanging Locker w/Light &
- Shelves - Starboard
- Mirrored Rope Locker Bulkhead
- Storage, Gunwale Cabinets - Port
- & Starboard
- TV- 20" Flatscreen w/DVD Player

---

## Galley

---

- Blinds, Wood
- Coffeemaker, 120V
- Countertop, Solid Surface, Sink,
- Single-Lever Grohe ® Faucet & Sink
- Cover
- Freezer, Under Counter w/Stainless-
- Steel Front, Dual Voltage
- 120V/12V (Waeco®)
- Handrail, Stainless Steel
- Microwave/Convection Oven, 120V
- Outlet, 12V Accessory
- Power Vent, 12V, w/Stainless-
- Steel Grill
- Refrigerator, Under Counter
- w/Stainless-Steel Front, Dual
- Voltage - 120V/12V (Waeco)
- Storage, Drawers w/Cutlery Insert
- Storage, Upper & Lower w/Designated
- Plate & Glass Storage
- Stove, 120V Recessed Two-Burner
- w/Solid Surface Cover (Kenyon®)
- Trash Receptacle w/Chute & Solid-
- Surface Cover

---

## Forward Head and Shower

---

- Door, Privacy - Access from Forward
- Stateroom
- Handrails, Stainless Steel

- Head, VacuFlush®
- Power Vent, 12V, w/Stainless-
- Steel Grill
- Storage, Gunwale Cabinets
- Storage, Medicine Cabinet - Mirrored
- Vanity w/Solid-Surface Countertop,
- Sink, Grohe Faucet & Storage Below
- Forward Shower - Starboard:
- Clothes Hook
- Curtain, Shower
- Door, Privacy - Access from Forward
- Stateroom
- Handrails, Stainless Steel
- Shower w/Seat & Adjustable Grohe
- Shower Wand

---

## Mid Berth and Head

- Door, Privacy - Sliding Pocket
- Hanging Locker - Port
- Mirrored Bulkhead - Aft
- Portlight, Stainless Steel - Fixed
- Seating, Conversation Pit - Converts
- to Double Berth w/Slide-Out Base
- Storage, Cabinets - Starboard
- Mid-Berth Head/Shower:
- Clothes Hook
- Curtain, Shower
- Door, Privacy - Access from Mid-Berth
- Handrail, Elliptical Stainless Steel
- Head w/Fiberglass Settee Lid &
- VacuFlush
- ® Toilet
- Storage, Medicine Cabinet
- Vanity w/Solid-Surface Countertop,
- Sink, Faucet w/Pullout Shower
- Sprayer & Storage Below

---

## Hull and Deck Features

- Bottom Paint



- Bow Rail, 316 Stainless Steel w/Welded Stanchions, Intermediate Rails & Life Lines
- Canvas Colors - Navy
- Cleats, Custom Sea Ray® Thru-Bolted - Stainless Steel (8) Deck Fill Plates, Stainless Steel
- Deck Rails, 316 Stainless Steel
- Drain Plugs, Brass-Threaded - Garboard
- Gel Coat, Arctic White
- Graphics, Striping
- Handrails, 316 Stainless Steel
- Hatch, Deck Vent - Translucent w/Locks & Sky Screen Cover (20x20) Trapezoid
- Hull Windows, Stainless Steel - (6 Fixed)
- Lights, Navigation
- Portlights, Stainless Steel (3 Opening)
- Resin, High-Performance Vinylester
- Rub Rail, PVC w/Stainless-Steel Insert
- Skylight, Flush-Mount w/Retractable Sunshade - Salon Storage, Transom Wall - (ForFenders & Gear)
- Stringer System, Fiberglass
- Swim Platform, Integral w/Concealed
- Stainless-Steel Three-Step Swim Ladder w/Integral Grab Handle

## Technical Features

- Control Station: • Alarms, High-Water - Bilge & Cabin • Compass • Emergency Start System - Engines • Dash - Gel-Coated Nickel • Horns, Air (Concealed) - Dual • Trumpet • Instrumentation Panel • Power Steering, Hydraulic, Tilt • Wheel, Wood Accent • Shift & Throttle Controls w/Gold • Knobs • SmartCraft™ Diagnostics: • - Instrumentation, Custom Sea Ray • ® • SmartCraft w/Low-Glare Blue • Night Lighting & Chrome Bezels • - 4-in-1 Multigauges (2) (Includes: • Fuel Level, Oil Pressure, • Voltmeter & Water Temperature) • - Tachometers (2) • Smart Craft System View (Includes: • Air and Water Temperature, • Combined Fuel Flow/Range, Depth, • Engine Alarms/Hour Meters, Engine • Synchronizer, GPS Interface, • System Maintenance Records) •

Switch Panel (Backlit) • Switches, Illuminated Weatherproof • Rockers & Dimmer Control • Electronics: • Electronics Circuit, 50 Amp/12V • VHF Radio w/Remote Speaker & 8' • Fiberglass Antenna

---

## Cockpit Features

---

- Beverage Holders (10)
- Carpet Liner, Snap-In
- Door, Cabin Entry - Curved Acrylic
- Door, Transom - Acrylic
- Floor Liner, Fiberglass - Self-Bailing
- Hatch, Engine Room - Electrically Actuated
- Ice Bucket, Insulated - Built-In
- Icemaker, 120V
- Handrails, 316 Stainless Steel
- Lighting, Indirect
- Outlet, 12V Accessory
- Outlet, 120V GFI Protected
- Seating, Companion Bench w/Molded Fiberglass Storage Base & Euro-Style Backrest
- Seating, Helm w/Flip-Up Thigh-Rise Bolster, Armrests & Heavy-Duty Pedestal w/Slide, Swivel & Pneumatic Vertical Adjustment
- Seating, U-Shaped - Aft
- Ship's Bell
- Sport Spoiler, Molded Fiberglass (Seamless) w/Overhead Lighting & Stainless-Steel Grab Rails
- Step, Molded Deck Access
- Storage, Side Panel - Starboard
- Table, Cockpit w/Dedicated Storage
- Wet Bar w/Sink & Faucet, Corian Countertop, Stainless-Steel Handrail, Trash Receptacle & Storage Cabinet - Port

---

## Electrical Systems

---

- Batteries (5) w/Trays & Switches

- Battery Charger/Converter, 120V/40
- Amp/12V
- Battery, Switch - Latching Solenoid -
- 12VDC
- Isolators, Galvanic (2)
- Panel, DC Circuit Breaker -
- Located at Helm
- Panel, DC Main Breaker -
- Located in Bilge
- Panel, Main Distribution - DC -
- Located in Cabin
- Panel, Distribution - AC - Housed in
- Aluminum Enclosure - Located
- in Cabin
- Shore Power, Dual 120V/30 Amp
- w/50' Cords
- TV/Phone Inlet w/TV Antenna, TV
- Shore Cord & Phone Shore Cord
- Wiring, Color-Coded w/Chafe
- Protection

---

## Generator and AC Systems

---

- **Generator:**
- Kohler
- 120V/60 Cycle, w/Sound Shield,
- Remote Start, Muffler, Closed
- Cooling, Fuel Filter, Seacock &
- Seawater Strainer (Generator
- manufacturer and size may vary
- due to product availability)
- **Air Conditioning/Heating:**
- Zone-Controlled Reverse-Cycle
- System (19,000 BTU)
- Custom Integral Vent System

---

## Windlass

---

- Windlass System:
- Anchor, Galvanized
- Anchor Chute, Stainless Steel
- Anchor Rope/Chain Storage

- w/Hatches (2)
- Anchor Washdown Spigot
- Windlass, Rope/Chain w/Foot
- Switches

## Color

---

- Exterior - WHITE
- Interior – WHITE
- Black Canvas

## Exclusions

---

Owner's personal belongings.

## Disclaimer

---

The Company offers the details of this vessel or yacht in good faith but cannot guarantee or warrant the accuracy of this information nor warrant the condition of the vessel. A buyer should instruct his representatives, agents, or his surveyors, to investigate such details as the buyer desires validated. This vessel or yacht is offered subject to prior sale, price change, or withdrawal without notice.

# PHOTOS

**Profile**



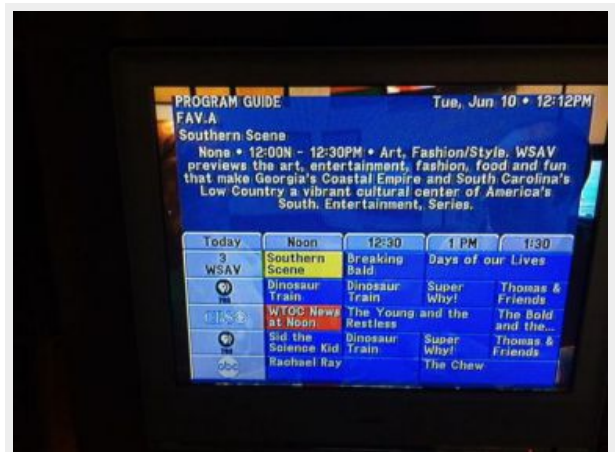
**Cockpit**



**Cockpit TV**



**Sat Direct TV**



**Helm Cover and Windshield Cover**



**Bow Thruster**



**Auto Pilot**



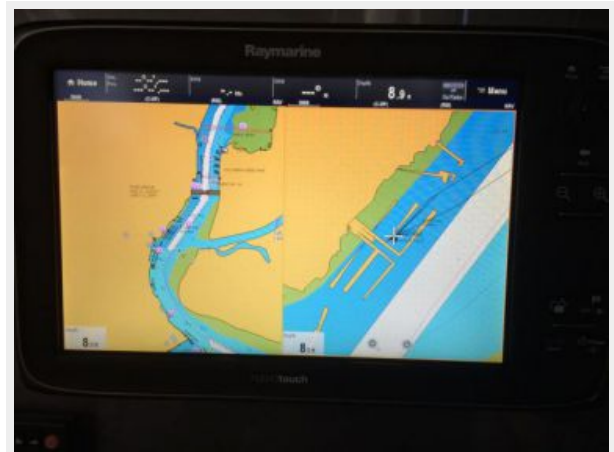
**Helm**



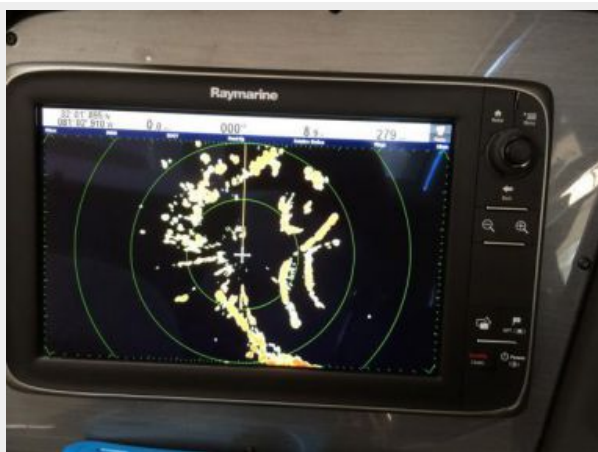
**Smart Craft Display 614 Hours**



**Raymarine Hybrid Touch**



**Raymarine Hybrid Touch Radar Display**



**Stairs into Salon**



**Salon Sofa**



**Salon Sofa**



**Galley**



**Aft Cabin**



**Hydraulic Swim Platform**



**Profile**



---

# CONTACTS

---

Andrey Shestakov, leading yacht broker of the sales department of Shestakov Yacht Sales Inc. Shestakov Yacht Sales Inc., the official representative of the Miami/Fort Lauderdale FL headquarters.

---

## Contact details

---

Email: [andrey@shestakovyachtsales.com](mailto:andrey@shestakovyachtsales.com)

Web: [shestakovyachtsales.com/en/](http://shestakovyachtsales.com/en/)

---

## Telephones

---

USA: +1(954)274-4435

---

## Office hours

---

Monday – Saturday: **9:00 - 21:00** EDT

Sunday: **closed**

---

## Address

---



Harbour Towne Marina, 850 NE 3rd St,  
STE 213, Dania, FL 33004