

47 STEVENS — QUEEN LONG MARINE



Builder: QUEEN LONG MARINE

Year Built: 1983

Model: Cruising Sailboat

Price: PRICE ON APPLICATION

Location: United States

LOA: 47' 0" (14.33m)

Beam: 14' 0" (4.27m)

Max Draft: 6' 0" (1.83m)

Cruise Speed: 8 Kts. (9 MPH)

Max Speed: 8 Kts. (9 MPH)

Our experienced yacht broker, Andrey Shestakov, will help you choose and buy a yacht that best suits your needs 47 Stevens — QUEEN LONG MARINE from our catalogue. Presently, at Shestakov Yacht Sales Inc., we have a wide variety of yachts available on our sale's list. We also work in close contact with all the big yacht manufacturers from all over the world.

If you would like to buy a yacht 47 Stevens — QUEEN LONG MARINE or would like help answering any questions concerning purchasing, selling or chartering a yacht, please call +1(954)274-4435

TABLE OF CONTENTS

TABLE OF CONTENTS	2
SPECIFICATIONS	3
Overview	3
Basic Information	3
Dimensions	3
Speed, Capacities and Weight	3
Accommodations	3
Hull and Deck Information	4
Engine Information	4
PHOTOS	5
CONTACTS	12
Contact details	12
Telephones	12
Office hours	12
Address	12

SPECIFICATIONS

Overview

Proven Sparkman & Stevens Designed World Cruiser that has just returned from a circumnavigation arriving in South Florida in January 2013. The vessel is in great shape and has just received a new Awlgrip paint job in December 2013. The very experienced owner is motivated to sell & has his new boat coming soon .

Basic Information

Category: Cruising Sailboat

Sub Category: Center Cockpit

Model Year: 1983

Year Built: 1983

Country: United States

Vessel Top: Bimini Top

Cockpit: Yes

Dimensions

LOA: 47' 0" (14.33m)

LOD: 47' 0" (14.33m)

Beam: 14' 0" (4.27m)

Max Draft: 6' 0" (1.83m)

Speed, Capacities and Weight

Cruise Speed: 8 Kts. (9 MPH)

Max Speed: 8 Kts. (9 MPH)

Displacement: 32000 Pounds

Water Capacity: 125 Gallons

Holding Tank: 40 Gallons

Fuel Capacity: 93 Gallons

Accommodations

Total Cabins: 3

Total Berths: 6

Sleeps: 6

Total Heads: 2

Hull and Deck Information

Hull Material: Composite Fiberglass

Deck Material: Fiberglass

Hull Configuration: Moderate Fin

Hull Color: White

Hull Finish: Aluminum

Hull Designer: Sparkman & Stevens

Exterior Designer: Sparkman & Stevens

Interior Designer: Sparkman & Stevens

Engine Information

Engines: 1

Manufacturer: Yanmar

Engine Type: Inboard

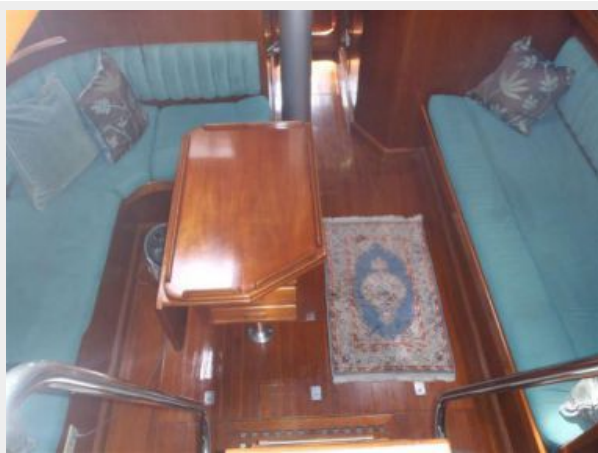
Fuel Type: Diesel

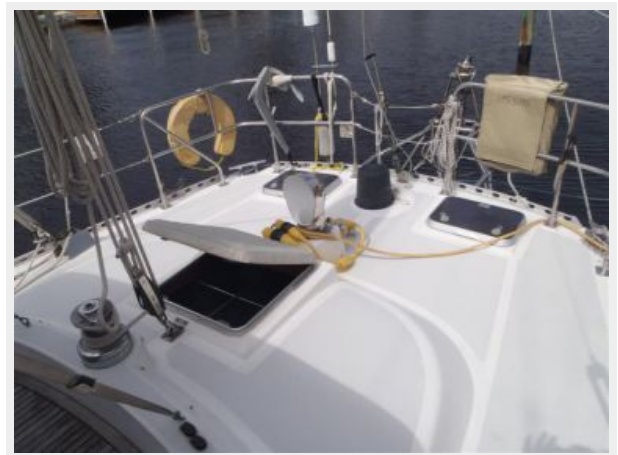
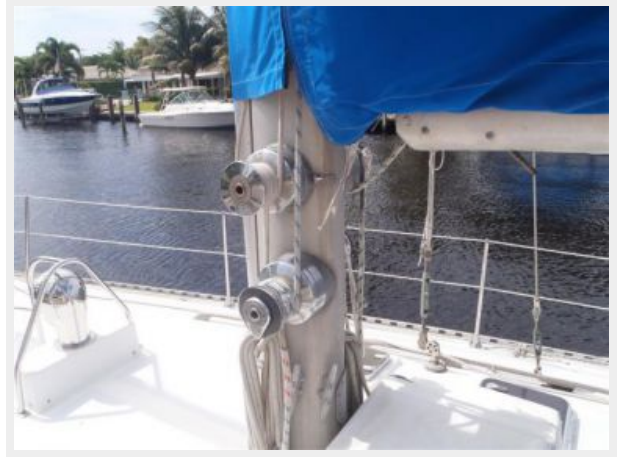
PHOTOS















CONTACTS

Andrey Shestakov, leading yacht broker of the sales department of Shestakov Yacht Sales Inc. Shestakov Yacht Sales Inc., the official representative of the Miami/Fort Lauderdale FL headquarters.

Contact details

Email: andrey@shestakovyachtsales.com

Web: shestakovyachtsales.com/en/

Telephones

USA: +1(954)274-4435

Office hours

Monday – Saturday: **9:00 - 21:00** EDT

Sunday: **closed**

Address



Harbour Towne Marina, 850 NE 3rd St,
STE 213, Dania, FL 33004