

## BLUEBERRY — SEA RAY



**Судостроитель:** SEA RAY

**Год постройки:** 2005

**Модель:** Крейсер

**Цена:** **ЦЕНА ЯХТЫ ПО ЗАПРОСУ**

**Местонахождение:** United States

**Длина общая:** 48' 0" (14.63m)

**Ширина:** 14' 8" (4.47m)

**Мин. осадка:** 4' 0" (1.22m)

**Крейс. скорость:** 25 Kts. (29 MPH)

**Макс. скорость:** 30 Kts. (35 MPH)

Купить **Blueberry — SEA RAY** а также выбрать подходящую вам яхту из нашего каталога яхт вам поможет опытный яхтенный брокер Андрей Шестаков. На сегодняшний день компания **Shestakov Yacht Sales Inc.** имеет большое количество яхт в собственном списке продаж, а также тесно сотрудничает со всеми крупными яхтенными производителями по всему миру.

Для того чтобы купить яхту **Blueberry — SEA RAY** а также проконсультироваться по любому вопросу связанному с покупкой, продажей, чартером яхт позвоните по телефону **+7(918)465-66-44**.

# ОГЛАВЛЕНИЕ

---

ОГЛАВЛЕНИЕ	2
ХАРАКТЕРИСТИКИ	4
Обзор	4
Основная информация	4
Размеры	4
Скорость, вместимость и масса	5
Размещение	5
Корпус и палуба	5
Информация о двигателе	5
ПОДРОБНОЕ ОПИСАНИЕ	6
Performance	6
Broker Comment, Updates & Services	6
Hull & Deck Features	6
Engine & Propulsion	7
Helm Features	7
Electronics	8
Cockpit	8
Windlass	9
Bilge Systems	9
Electrical Equipment	10
Salon & Galley Features	10
Master Stateroom	10
Master Head Features	11
VIP Stateroom 1	11
VIP Head	11
Исключения	12
Отказ от ответственности	12
ФОТОГРАФИИ	13

---

КОНТАКТЫ	34
Контактная информация	34
Телефоны	34
Время работы	34
Адрес	34

# ХАРАКТЕРИСТИКИ

## Обзор

This stunning hardtop express with sweeping lines took American sportyacht styling to the next level. Helm deck, with distinctively shaped side windows, includes standard hardtop with overhead lighting, two opening sunroof hatches and windshield vents. With recent topside and hull detail 02/2014, services 10/2013, new batteries 10/2013, fresh bottom paint 9/2013. The optional camper canvas doubles your living area out of the sun. This posh twin-head interior with cherry joinery, hardwood flooring features elegant salon with ultra-leather settee which converts to sleeper, spacious U-shaped galley, complete entertainment center. Cruise in the mid 20s with QSC540 - 517hp Common Rail Cummins V-drive diesels (28–29 knots top).

## Основная информация

<b>Тип судна:</b> Крейсер	<b>Подкатегория:</b> Express
<b>Модельный год:</b> 2006	<b>Год постройки:</b> 2005
<b>Страна:</b> United States	<b>Регистрационный номер:</b> FL2545NH
<b>Верх:</b> 2363	<b>Кубрик:</b> Да

## Размеры

<b>Длина общая:</b> 48' 0" (14.63m)	<b>Ширина:</b> 14' 8" (4.47m)
<b>Мин. осадка:</b> 4' 0" (1.22m)	<b>Трапы:</b> 13' 4" (4.06m)
<b>Длина привального бруса:</b> 51' 0" (15.54m)	

## Скорость, вместимость и масса

---

**Крейс. скорость:** 25 Kts. (29 MPH)

**Крейсерская скорость поворота:** 2350 Kts.

**Дальность на крейсерской скорости:** 237

**Макс. скорость:** 30 Kts. (35 MPH)

**Макс. скорость поворота:** 2680 Kts.

**Дальность на макс. скорости:** 180 Kts.

**Водоизмещение:** 33600 Pounds

**Вместимость воды:** 110 Gallons

**Вместимость сточного бака:** 60 Gallons

**Объем топливного бака:** 400 Gallons

**Расход топлива:** 41 Gallons

## Размещение

---

**Всего кают:** 2

**Всего коек:** 3

**Спальные места:** 6

**Всего ком. состава:** 21

## Корпус и палуба

---

**Материал корпуса:** Fiberglass

**Материал палубы:** Fiberglass

**Комплектация корпуса:** Deep Vee

**Цвет корпуса:** BLUE

**Отделка корпуса:** Plastic

## Информация о двигателе

---

**Двигатели:** 2

**Производитель:** Cummins Mercruiser

**Модель:** QSC540

**Тип двигателя:** Inboard

**Тип топлива:** Diesel

## ПОДРОБНОЕ ОПИСАНИЕ

### Performance

RPM	GPH	MPH	LOAD
1950 rpm	28 gph	20 mph	N/A
2050 rpm	31 gph	21 mph	N/A
2150 rpm	34 gph	24 mph	68% load
2250 rpm	36.8 gph	27 mph	72%load
2350 rpm	41gph	28 mph	74%load
2450 rpm	44 gph	30 mph	82%load
2550 rpm	50 gph	32 mph	92%load
2680 rpm	55 gph	33.4 mph	100% load

### Broker Comment, Updates & Services

- Fresh Bottom Paint 10/2013
- New Batteries 12/2013
- Compounded and Waxed June 2014
- Annual engine Service completed 10/2013. (Oil & Filters Main, Gen & Transmissions)
- Heat exchangers cleaned 10/2013, port element replaced.
- Sat TV with (2) Tuners.
- Midnight Blue Hull UPGRADE
- (6) New Bomar Hull Windows 07/2014
- Teak Flooring on Helm Deck
- UPGRADForward Deck Sunpad with Backrest UPGRADE
- Forward Deck Sunpad with Backrest UPGRADE
- Remote Spotlight with Dual Halogen Bulbs UPGRADE
- LCD TV/DVD Cockpit UPGRADE
- Cockpit A/C and Heat UPGRADE
- Cummins ONAN 11.5kW Generator w/Soundshield UPGRADE (615 hours)
- Washer/Dryer Combo UPGRADE
- Central Vacuum System UPGRADE
- Rod Holders in Cockpit UPGRADE
- Bow Thruster UPGRADE
- USCG Basic Equipment

### Hull & Deck Features

- Bottom Paint **NEW 10/2013**
- Underwater Transom Lights
- Bow Rail, 316 Stainless Steel w/Welded Stanchions, Intermediate
- Portlights, Stainless Steel (3 Opening, 3 Fixed)
- Resin, High-Performance Vinylester
- Rub Rail, PVC w/Stainless-Steel Insert

- Rails & Life Lines
- Forward Deck Sunpad w/Backrest
- Black Canvas
- Cleats, Custom Ray® Thru- Bolted - Stainless Steel (8)Sea
- Deck Fill Plates, Stainless Steel
- Deck Rails, 316 Stainless Steel
- Drain Plugs, Brass-Threaded - Garboard
- Gel Coat, Arctic White
- Graphics, Striping
- Handrails, 316 Stainless Steel Hatch, Deck Vent - Translucent w/Locks & Sky Screen Cover (Trapezoid)
- Hull Windows, Stainless Steel (6 Fixed)
- Lights, Navigation
- Skylight, Flush Mount w/Retractable Sunshade - Salon
- Storage, Transom Wall (For Fenders & Gear)
- Stringer System, Fiberglass
- Swim Platform, Integral/Extended w/Concealed Stainless-Steel Four- Step Swim Ladder w/Integral Grab Handle
- Thru-Hull Fittings, Stainless Steel
- Toe Rail, Molded Fiberglass - Deck
- Vent System, Engine Room - Integral w/Stainless-Steel Accents
- Windshield, Tempered/Tinted Curved Glass w/Aluminum Frame, & Electric Front Vents
- Windshield Washer System
- Windshield Wipers w/Delay & Speed Control

## Engine & Propulsion

- **Twin V-Drive Cummins Mercruiser QSC 540 8.3L Common Rail Diesel Engines**
- 11.5 kW Onan Diesel Generator**UPGRADE (615 hours)**
- Generator Sound Box**UPGRADE**
- Crossover Fuel System - Generator Only
- Fuel Filters - Remote (Racor®)
- Fuel Lines, USCG - Type A-1
- Fuel Tanks, Aluminum w/Manual Shutoff Valves & Ultrasonic Sending Units
- Bonding System w/Zinc Hull Plate
- Propeller Shafts, 2" Stainless Steel (2) - Aquamet 22
- Propellers, Nibral 4-Blade Cup
- Rudders, Manganese-Bronze w/Stainless-Steel Posts
- Seacocks on all Underwater Fittings
- Seawater Strainers
- Shaft Logs, Dripless w/Extra Seal Carrier Kit
- Struts, Manganese-Bronze
- Trim Tabs, Hydraulic

## Helm Features

- Alarms, High-Water - Bilge & Cabin

- Helm A/C Vents
- A/C Controls
- Compass
- Dash, Gel Coated - Nickel
- Emergency Start System - Engines
- Horn, Air - Single Trumpet
- Stainless Steen Cupholders
- Instrument Panel, High-Gloss
- Power Steering, Hydraulic w/Tilt Wheel-**UPGRADE**
- Shift & Throttle Controls w/gold knobs
- SmartCraft® Diagnostics: - Instrumentation, Custom Ray® SmartCraft w/Low-Glare Blue Night Lighting & Chrome Bezels - 4-in-1 Multigauges (2) (Includes: Fuel Level, Oil Pressure, Voltmeter & Water Temperature) - Tachometers (2)
- SmartCraft® VesselView Display: -**Propulsion**:Engine Hour Meters, Engine Status, Performance and Fuel, Peak Performance, Boost Pressure, Troll Control, Cruise Control -**Vessel**:Vessel Status, Tank Status, Steering Position, Generator Data -**Environment and Navigation**:GPS Interface, Depth and Water Temperature, Depth Alerts, Trip Log Information, Fuel to Waypoint Data, Navigation Data -**Active Alarms/Details - Alarm History/Details**
- Switch Panel - High Gloss (Backlit)
- Switches, Illuminated Weatherproof Rockers & Electronic Dimmer Control

## Electronics

---

- Northstar 6000i Chartplotter & Radar
- Northstar Open Array Radar 4kW
- Northstar 6100i Chartplotter & Radar
- Northstar Auto Pilot
- Northstar VHF with loud speaker
- Cummins Mercruiser Vesselview Diagnostic Display
- ACR Remote Spotlight Control**UPGRADE**
- Vetus Bow Thruster**UPGRADE**
- Trim Tab Controls
- Clarion Stereo Remote Control**UPGRADE**

## Cockpit

---



- Complete Factory from teak deck Systems teak upper Helm Area
- Seating, U-Shaped Aft w/Storage Below
- Sunpad, Cockpit Table Conversion w/Filler Cushions**UPGRADE**
- Table, Cockpit - Fiberglass w/Teak Overlay
- Wet Bar w/Sink, Faucet, Solid- Surface Countertop, Stainless- Steel Handrail, Trash Receptacle & Storage Cabinet - Port
- Refrigerator, 120V**UPGRADE**
- Air Conditioning/Heating - Cockpit 24,000 BTU**UPGRADE**
- TV, 20" Flatscreen w/DVD player**UPGRADE**
- Rod Holders**UPGRADE**
- Steps, Boarding (Molded-In)
- Beverage Holders (10)
- Teak Floor, Upper Cockpit**UPGRADE**
- Door, Sliding Cabin Entry - Acrylic
- Door, Transom
- Swim Platform, Integral/Extended w/Concealed Stainless-Steel Four- Step Swim Ladder w/Integral Grab Handle( Option Hydraulic Lift can be added easily for a charge and would be Brand new state of the art system)
- Hot and Cold Water Transom Shower
- Transom Storage Locker- Lighted and Dri Decked
- Handrails, 316 Stainless Steel
- Hardtop, Fiberglass w/Vent Hatches (2) & Overhead Lighting
- Hatch, Engine Service - Gas Assisted
- Storage, Transom Wall (For Fenders & Gear)
- Lighting, Indirect All LED - Upgrade
- Outlet, 12V Accessory
- Outlet, 120V GFI Protected
- Upgraded Sound system with Sub Woofer and Upgraded (4) high Powered speakers .
- 2nd remote control for Clairon stereo in Cockpit and at helm.

## Windlass

- Anchor, Galvanized
- Anchor Chute, Stainless Steel
- Anchor Rope/Chain Storage w/Gas- Assisted Hatches (2)
- Anchor Washdown Spigot w/Hose
- Windlass, Rope/Chain w/Foot Switches

## Bilge Systems

- Bilge Pumps, 12V Automatic (2)
- Bilge Pumps, 12V Automatic High- Water (1 Bilge, 1 Cabin)
- Blowers, 12V Bilge (2)
- Exhaust, Underwater - Patented
- Fire Suppression System - Automatic w/Manual Pull
- Gel-Coated Engine Room
- Insulation, Engine Room - 2" w/Loaded Vinyl Barrier
- Ladder, Stainless Steel - Removable
- Lighting, 12V
- Oil Changer System - Engines, Transmissions & Generator

## Electrical Equipment

- Electronics Circuit, 50 Amp/12V
- Central Vacuum System **UPGRADE**
- Batteries, 8-D w/Boxes (2)
- Battery Charger/Converter 120V/50 Amp/12V
- Battery Charger Overcurrent Protection
- Battery Switches, 2-Way Solenoid Activated (MDP & Bilge)
- Cable TV System w/Inlet (Includes Phone Inlet), TV & Phone Cords, Coax Outlets, Gain Control & Omni Directional AntennaShore
- Panel, DC Circuit Breaker - Remote
- Panel, DC Main Breaker
- Panel, Main Distribution - AC
- Panel, Main Distribution - DC
- Shore Power, Cablemaster (Glendinning) 240V/50 Amp w/75' Cord & Wireless Remote
- Transformer, Shore Power Isolation - 240V/50 Amp
- Wiring, Color-Coded w/Chafe Protection

## Salon & Galley Features

- Coffeemaker, 120V
- Countertop, Solid-Surface w/Stainless-Steel Sink, Single- Lever Grohe® Faucet & Sink Cover
- Handrail, Stainless Steel
- Microwave/Convection Oven w/Stainless-Steel Front - 120V
- Power Vent, 12V w/Stainless-Steel Grill
- Refrigerator/Freezer, Upright w/Stainless-Steel Front - 120V
- Storage, Drawers w/Cutlery Insert
- Storage, Upper & Lower w/Designated Plate & Glass Storage

## Master Stateroom

- Bed, Full-Size Island-Style w/Innerspring Mattress, Pillows, Sheets, Coordinated Spread & Drawer Storage Below
- Door, Privacy (Sliding Pocket) w/Full-Length Mirror
- Flooring, Wood - Lower Berth Step Area & Between Head/Shower Area
- Hanging Lockers (2) w/Lights - Port & Starboard
- Mirrored Rope Locker - Bulkhead
- Storage, Side Shelves
- TV, 15" Flatscreen w/DVD Player

## Master Head Features

---

### Master Head to Port

- Bathroom Tissue Holder
- Door, Privacy - Access from Forward Stateroom
- Handrails, Stainless Steel
- Head, VacuFlush®
- Power Vent, 12V
- Robe Hook
- Storage, Gunwale Cabinet
- Storage, Medicine Cabinet - Mirrored Vanity w/Solid-Surface Countertop, Sink, Grohe Faucet, & Storage Below

### Master Head to Starboard

- Curtain, Shower
- Door, Privacy - Access from Forward Stateroom
- Handrail, Stainless Steel
- Shower w/Seat & Adjustable Grohe® Shower Wand
- Towel Rings (2)

## VIP Stateroom 1

---

- Beds, Twin (2) w/Mattresses, Pillows, Sheets & Coordinated Spreads w/ Slide System to Convert into Queen-Size Bed
- Independent A/C Zone
- Washer/Dryer Combo**UPGRADE**
- TV, 15" Flatscreen w/DVD Player & Gaming System Port**UPGRADE**
- Door, Privacy
- Hanging Locker w/Light & Shelves
- Portlight, Stainless Steel - Opening
- Storage, Cabinets — Starboard

## VIP Head

---

- Curtain, Shower
- Door, Privacy - Access from Mid-Stateroom
- Handrail, Stainless Steel
- Head, VacuFlush®
- Robe Hook
- Storage, Medicine Cabinet - Mirrored
- Shower w/Seat & Adjustable Grohe Shower Wand
- Towel Ring
- Vanity w/Solid-Surface Countertop, Sink, Grohe Faucet, & Storage Below

## Исключения

---

При продаже яхты исключаются личные вещи владельца.

## Отказ от ответственности

---

Компания предоставляет описание судна или яхты добросовестно, но не может гарантировать точность этой информации, а также не ручается за техническое состояние. Покупатель должен проинструктировать своих агентов или оценщиков исследовать представленную информацию более подробно, по собственному желанию. Продажа судна или яхты, изменение цены или снятие с продажи будет происходить без предварительного уведомления.

# ФОТОГРАФИИ











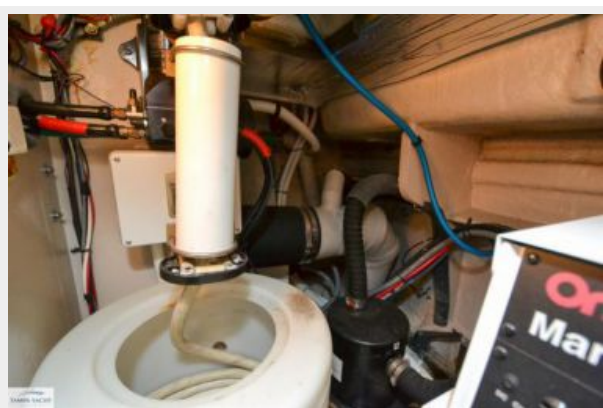
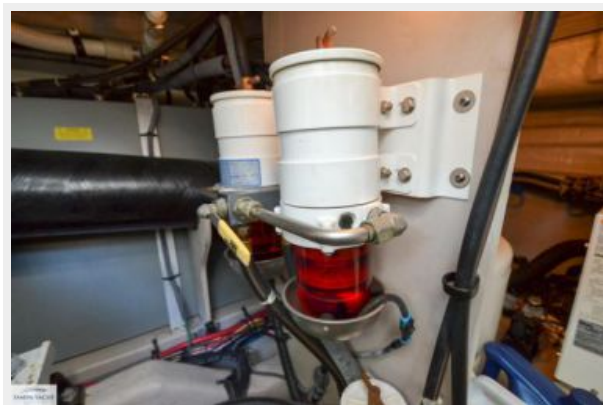










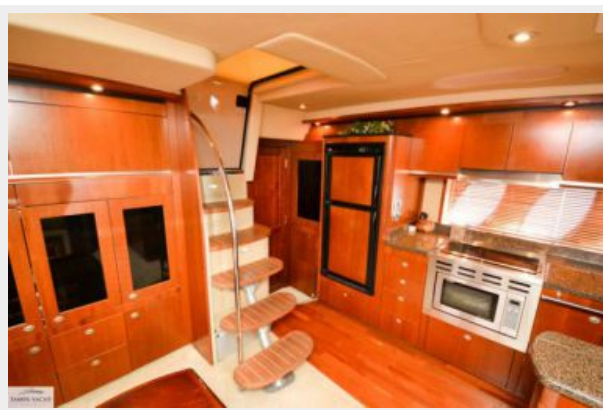


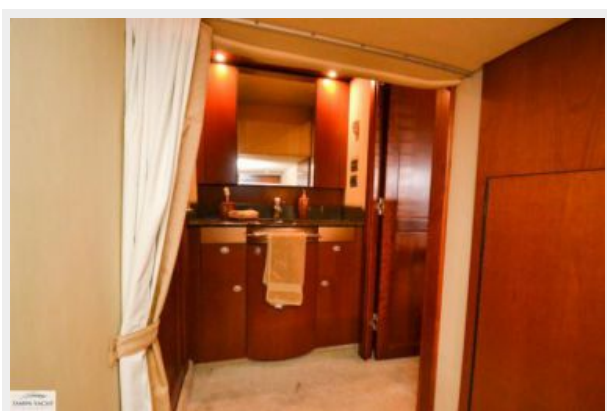
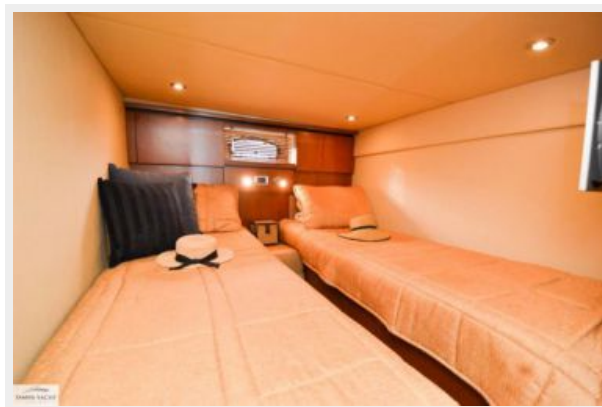










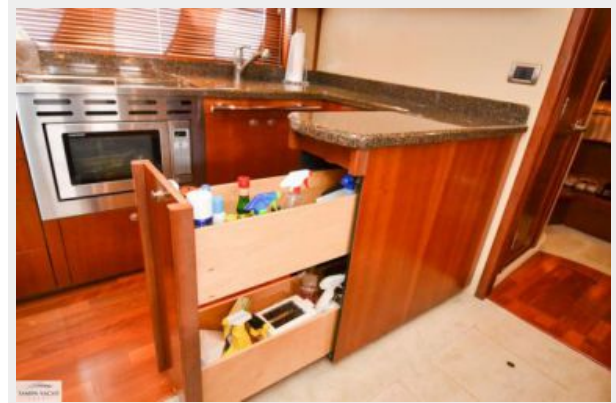






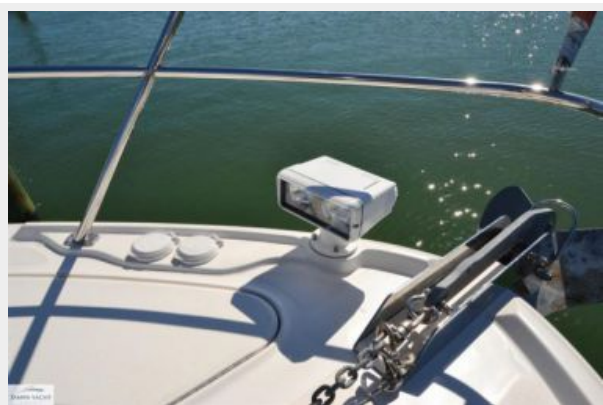






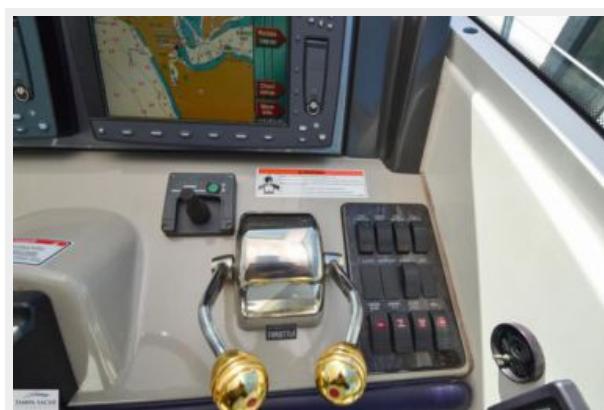
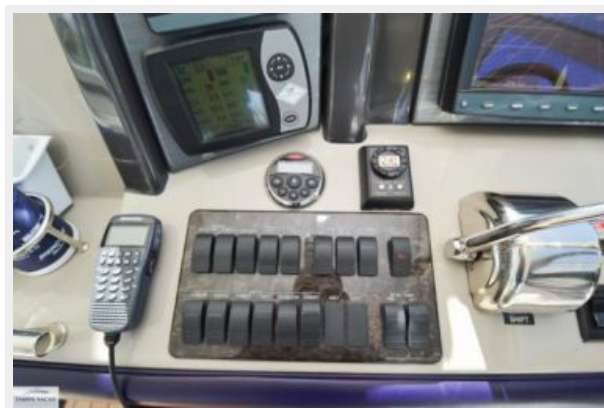


















# КОНТАКТЫ

---

Андрей Шестаков (Andrey Shestakov) – ведущий яхтенный брокер отдела продаж яхт и судов компании Shestakov Yacht Sales Inc. Официальный представитель Shestakov Yacht Sales Inc. для русскоговорящих клиентов в центральном офисе компании в Майами/Форт Лодердейл/Флорида/США.

## Контактная информация

---

Email: [andrey@shestakovyachtsales.com](mailto:andrey@shestakovyachtsales.com)

Web: [shestakovyachtsales.com](http://shestakovyachtsales.com)

## Телефоны

---

Краснодарский край: **+7(918)465-66-44**

США, Майами, Флорида: **+1(954)274-4435**

## Время работы

---

Понедельник – Суббота: **9:00 - 21:00**  
EDT

Воскресенье: **Закрито**

## Адрес

---



Harbour Towne Marina, 850 NE 3rd St,  
STE 213, Dania, FL 33004