

SE DROP — FERRETTI



Builder: FERRETTI

Year Built: 2006

Model: Motor Yacht

Price: PRICE ON APPLICATION

Location: United States

LOA: 73' 0" (22.25m)

Beam: 19' 0" (5.79m)

Max Draft: 6' 1" (1.85m)

Our experienced yacht broker, Andrey Shestakov, will help you choose and buy a yacht that best suits your needs **Se Drop — FERRETTI** from our catalogue. Presently, at Shestakov Yacht Sales Inc., we have a wide variety of yachts available on our sale's list. We also work in close contact with all the big yacht manufacturers from all over the world.

If you would like to buy a yacht **Se Drop — FERRETTI** or would like help answering any questions concerning purchasing, selling or chartering a yacht, please call **+1(954)274-4435**

TABLE OF CONTENTS

| | |
|---|----|
| TABLE OF CONTENTS | 2 |
| SPECIFICATIONS | 5 |
| Overview | 5 |
| Basic Information | 5 |
| Dimensions | 5 |
| Speed, Capacities and Weight | 5 |
| Accommodations | 5 |
| Hull and Deck Information | 5 |
| Engine Information | 6 |
| DETAILED INFORMATION | 7 |
| Accommodations | 7 |
| Salon | 7 |
| Dining Area | 7 |
| Galley | 7 |
| Master Stateroom & Head | 7 |
| VIP Guest at Bow | 8 |
| Guest & VIP Heads | 8 |
| (2) Central Guest Cabins - Port & Stbd. | 8 |
| Crew Quarters | 8 |
| Crew Head | 8 |
| Lobby in Crew & Engine Room | 8 |
| Flybridge | 8 |
| Forepeak | 9 |
| Engine Room | 9 |
| Electronics & Navigation Equipment at Main Helm | 9 |
| Hull & Deck Equipment | 9 |
| Equipment | 10 |
| Exclusions | 10 |

| | |
|---|----|
| Disclaimer | 11 |
| PHOTOS | 12 |
| Salon TV | 12 |
| Salon | 12 |
| Galley | 12 |
| Galley | 12 |
| Master Stateroom | 12 |
| Master Head | 12 |
| VIP | 13 |
| Port Guest Stateroom | 13 |
| Stbd. Guest Stateroom | 13 |
| Port Guest Head/Day Head | 13 |
| Starboard Guest Stateroom | 13 |
| Port Guest Stateroom | 13 |
| Lower Helm | 14 |
| Seat with Adjustable Table Next to Helm | 14 |
| Upper Helm | 14 |
| Upper Helm | 14 |
| Lower Cockpit Controls | 14 |
| Flybridge Seating | 14 |
| Engine Room | 15 |
| Engine Room | 15 |
| Engine Room | 15 |
| Engine Room | 15 |
| Engine Room | 15 |
| Engine Room | 15 |
| Engine Room | 16 |
| Engine Room | 16 |
| Engine Room | 16 |

| | |
|-----------------|----|
| Engine Room | 16 |
| Sistership | 17 |
| Layout | 17 |
| CONTACTS | 18 |
| Contact details | 18 |
| Telephones | 18 |
| Office hours | 18 |
| Address | 18 |

SPECIFICATIONS

Overview

Vessel built to US spec, to include upgraded air conditioning capacity that is perfect for cruising warm tropical waters. Sleeps eight guests in the four stateroom / four head layout.

Basic Information

Category: Motor Yacht

Model Year: 2006

Year Built: 2006

Country: United States

Dimensions

LOA: 73' 0" (22.25m)

Beam: 19' 0" (5.79m)

Max Draft: 6' 1" (1.85m)

Speed, Capacities and Weight

Water Capacity: 262 Gallons

Fuel Capacity: 1453 Gallons

Accommodations

Total Cabins: 4

Total Berths: 4

Total Heads: 4

Hull and Deck Information

Hull Material: Fiberglass

Engine Information

Engines: 2

Manufacturer: MAN

Model: 1550

Engine Type: Inboard

Fuel Type: Diesel

DETAILED INFORMATION

Accommodations

A roomy interior incorporates the large salon with separate dining area and is elegantly equipped with four staterooms and four heads.

Salon

Aft sliding door in Stainless Steel SAT TV DVD Surround sound system Hi-Fi Bose 3,2,1 with subwoofer Fully fitted carpet Beautiful styled and well detailed, the Ferretti 731 achieves a near-perfect balance of luxurious accommodations. Her interior is nothing short of spectacular in its execution of the layout in the salon, with its teak woodwork and plush furnishings, it's both appealing in size and comfort. The main salon features two leather arm chairs to port and starboard of sliding aft sliding door, and two leather sofas to port and to starboard with matching coffee tables with a centrally located TV with lift. Each sofa and arm chair share wood end tables.

Dining Area

Located one step up, forward from the salon area, it provides teak storage cabinetry and a beautiful crystal glass dining table with eight (8) leather chairs. Also, a wood stairway leads to the Flybridge.

Galley

Bosh ceramic cooking ring w/ 4 rings Cupboards Miele Dishwasher Electric/microwave combined oven Extractor fan ducted externally (230V) Fridge/ Freezer Granite counters Overhead lockers Skylight w/ cover Watertight exit door w/ manual movement Vinyl wooden floor

Master Stateroom & Head

32" SAT TV w/ Bose system DirecTv HD receiver Bedside tables w/ cabinet Bose 321 System Chest of drawers Curtains Bed w/ mattress, pillows & bedspread Drawers (4) underneath bed Dressing table w/ stool Fixed window w/ 2 opening portholes in SS w/ roll-up Fully fitted carpets Linens closet Reading lights Ventilation under the bed Walk-in closet w/ safe deposit box Master Head Design washbasin in Afromosia wood & wooden countertop Electric ceramic WC w/ fresh water Fixed window w/ 2 opening portholes in SS & w/ roll-up blind & waterproof cover Linen closet Mirror Overhead lockers & shelves Curtains Separate shower w/ curved Plexiglas

door & bench Sliding door b/n WC

VIP Guest at Bow

SAT TV w/ Bose 321 system 2 Book shelves Car stereo w/ 2 loudspeakers 2 Drawers underneath bed Escape hatch w/ sliding cover Fully fitted carpet Mirror inside one closet Curtains Shelves Reading lights 2 SS opening portholes w/ covers TV and outlets Ventilation under bed Wardrobe Queen size bed Two wardrobes 26" LCD TV CD/DVD Private attached head Blackout blinds

Guest & VIP Heads

Electric ceramic WC (w/ fresh water) Floor in teak, mat painted Mirror Overhead locker (only in port guest bathroom) Overhead lockers & shelves Curtains Shower w/ Plexiglas partition SS opening porthole Washbasin w/ marble counter tops

(2) Central Guest Cabins - Port & Stbd.

2 Twin Beds 3 Drawers underneath bed Fully fitted carpet Mirror over the bed headboard curtains Reading lights 2 SS opening portholes w/ covers Ventilation under bed Wardrobe 15" TV

Crew Quarters

2 Bunk beds Locker & storage Curtains Reading lights Washer/Dryer combo x 2 SS opening porthole w/ cover

Crew Head

Electric marine WC w/ fresh water Handheld shower SS opening porthole Storage Washbasin WC control panel

Lobby in Crew & Engine Room

Crew lounge in lieu of storage

Flybridge

Car stereo CD w/ watertight panel & 4 loudspeakers Cover for helmsman seat, bench & coach
 Electrical operated fully directable forward searchlight Electrohydraulic davit for lifting &
 launching tender from the spoiler & from the fly Electrohydraulic powered steering Electronic
 controls for engine clutch & throttle Electronic digital chain counter Fiberglass radar arch Fully
 fitter sink, fridge lt. 50 24V & locker BBQ Grill Helmsman bench w/ turn-around seat (180*),
 manually & w/ electro-hydraulic lifting Housed light buoy & floating rope Instrument panel w/
 electrical opening (2) Life rafts - 6+6 Lights on fly Plexiglas & stainless front defector w/ side
 panels Railing Rudder angle indicator Salon & cockpit stairs skylight Control station w/
 instrument & alarms Signal/flag mast Sun lounge pad w/ sunbathing cushions TV antenna U-
 shaped sofa & table w/ extension

Forepeak

Anchor chain lockers (2) Inspection covers (2) Salt water outlet w/ hose for chain washing Winch
 push button controls

Engine Room

Access hatch from the cockpit Air intakes w/ remote controlled shut off Automatic/ manual fire
 extinguisher Bilge pump Change over valve to allow engines to pump water from the bilge
 Double water tight insulated bulkhead at bow Electric self-locking blowers (2) Fresh water outlet
 for filling & washing Fuel filters (Racor) Fuel tank in fiberglass lt. 5500 w/ settling tank &
 discharge Inspection lights Portable lamp Raw water engine filters Tool kit Transparent gauge
 indicator in the fuel tank Water tight bulkhead abaft

Electronics & Navigation Equipment at Main Helm

Naviop system touch screen monitoring system Barometer, clock & hydrothermometer cabinets
 Cigarette lighter outlet 12v plug Control station w/ full instrumentation Electrohydraulic power
 steering Electronic controls for engine clutch & throttle Electronic digital chain counter Fully fitted
 carpet Electric Helmsman seat w/ manual fold down companion seat Instant parallel battery
 Integrated device for electric system control w/ touch screen display L-shaped sofa w/ sliding
 table Magnetic compass Rudder angle indicator Sliding watertight door, manual Gallinea
 windshield wipers w/ washers (3) & timer Teak w/ satin finish MAN digital readouts Quick chain
 counter Ilt Jabsco - searchlight Maptech radar and Maptech Nav system Lower helm Samsung
 display for Nav system Icom VHF lower and upper helm stations Simrad AP26 autopilot KVF M7
 Satellite Bow thruster control LCD Simrad speed depth temp IS15

Hull & Deck Equipment

Glendinning shore line cable mt. 15 Access to swim platform through fixed stairs Aft window & sliding door in stainless steel Anchors (2) Bruce type kg. 30 w/ 2 chains 2 Boat hooks housed Bow pulpit w/ side rails 2 Bow rollers Capstans 700W (2) w/ foot-operated controls Cleats mid-ship- 2 each side 4 Cockpit chairs Cockpit lights Electric windlass 2000W w/ controls on foredeck, bridge & fly bridge (2) Electrohydraulic folding ladder to water in the aft swim platform Electrohydraulic telescopic gangway in painted SS & teak w/ remote control Electrohydraulic folding bench w/ cushions at transom Extensible teak cockpit table (2100mm X 950mm) w/ storage for chairs External acoustic alarm for bilge water level fore, engine room & spoiler Fairleads Fenders Cockpit sink w/ hot cold fresh water & sea water supply Fully fitted stern lockers giving access to crew cabins & engine room Horn w/ compressor Ice maker Indirect lighting Ladder to fly bridge in fiberglass & teak 4 mooring lines Navigation lights Remote shutoff of engines & generators fuel hoses Salt water outlet at transom, in the forepeak & in the galley Shower w/ hot/cold water at transom Sliding watertight doors (2) manually operated Stainless steel deck hardware Stereo loud speakers (2) in the cockpit Sun lounge pad at bow w/ sunbathing cushions Teak deck & cockpit floor Wheelhouse windows w/ side openings Black windscreen covers Lower control station in cockpit

Equipment

2 Mitsubishi Gyros stabilizers (1) 2000 ARG (1) 4000 ARG 2 Kohler Generators Bow Thruster Cockpit docking controls Water chilled air conditioning Ice maker Glendinning cable recoiler Washer/Dryer combo Fold down transom seat Davit on Bridge Passerelle retracts & is hidden in deck when not in use (2) Six man life rafts Aft Cockpit Control Sea Recovery watermaker Electric system consisting of: 100Ah 12V auxiliary generator battery 185Ah 12V generator battery 24V lighting throughout 370Ah 24V engine starting batteries (4) 740Ah 24V automatic battery charger Battery disconnecting electronic & mechanical switches Electric outlets 230V throughout Inverter 24Vdc/ 230Vac 3000W w/ battery charger combi 100A Mechanical & electric battery parallel switch Electric WC system w/ fresh water Electrohydraulic powered steering Fire extinguishers Fresh water tank 900 ltrs. Grey water pump w/ automatic electric pump Grey water tank 210 ltrs. Holding tank (300lt) w/ gauge Hot water system w/ water heater It 80 230V Remote engine & generator shut down Salt water system w/ salt water pump & 2 intakes for hoses on deck Shore plug 63A 230V Silenced underwater exhausts Smoke detection alarm in the engine room Stuffing box w/ dripless shaft seal Trim tabs (Flaps) TV/telephone shore supply VHF (2) Waste water system w/ automatic electric & manual pump

Exclusions

Owner's personal belongings.

Disclaimer

The Company offers the details of this vessel or yacht in good faith but cannot guarantee or warrant the accuracy of this information nor warrant the condition of the vessel. A buyer should instruct his representatives, agents, or his surveyors, to investigate such details as the buyer desires validated. This vessel or yacht is offered subject to prior sale, price change, or withdrawal without notice.

PHOTOS

Salon



Salon TV



Galley



Galley



Master Stateroom



Master Head



VIP



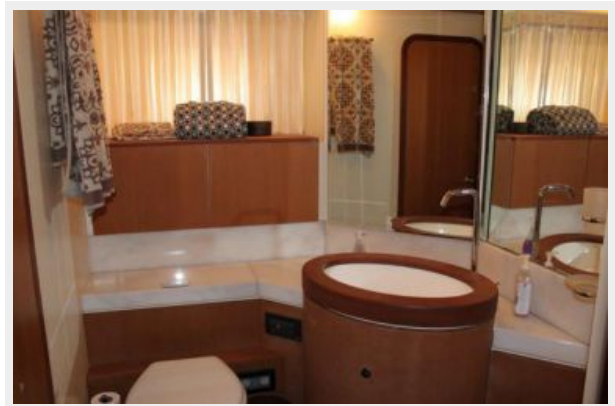
Port Guest Stateroom



Stbd. Guest Stateroom



Port Guest Head/Day Head



Starboard Guest Stateroom



Port Guest Stateroom



Lower Helm



Seat with Adjustable Table Next to Helm



Upper Helm



Upper Helm



Lower Cockpit Controls



Flybridge Seating



Engine Room



Engine Room



Engine Room



Engine Room



Engine Room



Engine Room



Engine Room



Engine Room



Engine Room



Engine Room



Sistership



Layout



CONTACTS

Andrey Shestakov, leading yacht broker of the sales department of Shestakov Yacht Sales Inc. Shestakov Yacht Sales Inc., the official representative of the Miami/Fort Lauderdale FL headquarters.

Contact details

Email: andrey@shestakovyachtsales.com

Web: shestakovyachtsales.com/en/

Telephones

USA: +1(954)274-4435

Office hours

Monday – Saturday: **9:00 - 21:00** EDT

Sunday: **closed**

Address



Harbour Towne Marina, 850 NE 3rd St,
STE 213, Dania, FL 33004