

# JANA — FEADSHIP/KONINKLIJKE DE VRIES



**Builder:**

FEADSHIP/KONINKLIJKE DE VRIES

**Year Built:** 1986

**Model:** Motor Yacht

**Price:** PRICE ON APPLICATION

**Location:** Turkey

**LOA:** 152' 0" (46.33m)

**Beam:** 28' 2" (8.59m)

**Min Draft:** 9' 10" (3.00m)

**Max Draft:** 9' 10" (3.00m)

**Cruise Speed:** 10 Kts. (12 MPH)

**Max Speed:** 13 Kts. (15 MPH)

Our experienced yacht broker, Andrey Shestakov, will help you choose and buy a yacht that best suits your needs **JANA — FEADSHIP/KONINKLIJKE DE VRIES** from our catalogue. Presently, at Shestakov Yacht Sales Inc., we have a wide variety of yachts available on our sale's list. We also work in close contact with all the big yacht manufacturers from all over the world.

If you would like to buy a yacht **JANA — FEADSHIP/KONINKLIJKE DE VRIES** or would like help answering any questions concerning purchasing, selling or chartering a yacht, please call **+1(954)274-4435**

---

# TABLE OF CONTENTS

---

TABLE OF CONTENTS	2
SPECIFICATIONS	3
Overview	3
Basic Information	3
Dimensions	3
Speed, Capacities and Weight	3
Accommodations	3
Hull and Deck Information	4
Engine Information	4
PHOTOS	5
CONTACTS	7
Contact details	7
Telephones	7
Office hours	7
Address	7

---

# SPECIFICATIONS

---

## Overview

---

Following her six month's refit including a full new paint job, new teak decks, a new AV-, and upgraded air condition system, JANA is now in excellent condition. JANA has 5 large staterooms, which can accommodate up to 12 guests in a master suite on the main deck, a VIP suite, two double cabins, one twin cabin and Pullman berths. The vast space of her decks makes it the perfect area to unwind or for entertaining. JANA also features a Jacuzzi on the sun deck.

## Basic Information

---

**Category:** Motor Yacht

**Model Year:** 1986

**Year Built:** 1986

**Refit Year:** 2014

**Country:** Turkey

## Dimensions

---

**LOA:** 152' 0" (46.33m)

**Beam:** 28' 2" (8.59m)

**Min Draft:** 9' 10" (3.00m)

**Max Draft:** 9' 10" (3.00m)

## Speed, Capacities and Weight

---

**Cruise Speed:** 10 Kts. (12 MPH)

**Cruise Speed Range:** 3500

**Max Speed:** 13 Kts. (15 MPH)

**Gross Tonnage:** 418 Pounds

**Water Capacity:** 6816 Gallons

**Fuel Capacity:** 13553 Gallons

## Accommodations

---

**Total Cabins:** 5

**Crew Sleeps:** 10

---

## Hull and Deck Information

---

**Hull Material:** Steel

**Exterior Designer:** Fritz De Voogt

**Interior Designer:** Glade Johnson Design,  
Inc., Larvor

---

## Engine Information

---

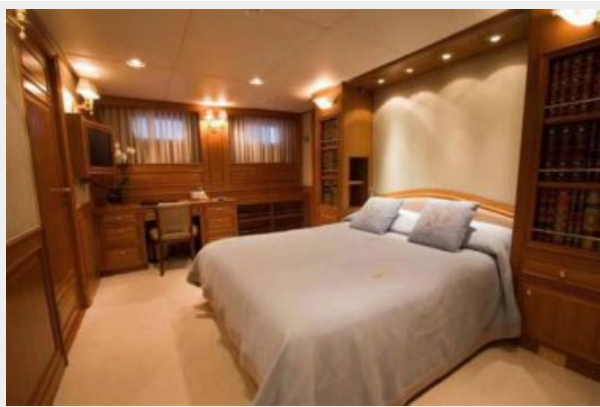
**Engines:** 2

**Manufacturer:** Caterpillar

**Model:** 3512 DITA

# PHOTOS





# CONTACTS

---

Andrey Shestakov, leading yacht broker of the sales department of Shestakov Yacht Sales Inc. Shestakov Yacht Sales Inc., the official representative of the Miami/Fort Lauderdale FL headquarters.

## Contact details

---

Email: [andrey@shestakovyachtsales.com](mailto:andrey@shestakovyachtsales.com)

Web: [shestakovyachtsales.com/en/](http://shestakovyachtsales.com/en/)

## Telephones

---

USA: +1(954)274-4435

## Office hours

---

Monday – Saturday: **9:00 - 21:00** EDT

Sunday: **closed**

## Address

---



Harbour Towne Marina, 850 NE 3rd St,  
STE 213, Dania, FL 33004