

## MY GIRLS — GRAND BANKS



**Builder:** GRAND BANKS

**LOA:** 42' 0" (12.80m)

**Year Built:** 1990

**Beam:** 14' 1" (4.29m)

**Model:** Motor Yacht

**Max Draft:** 4' 2" (1.27m)

**Price:** PRICE ON APPLICATION

**Location:** United States

Our experienced yacht broker, Andrey Shestakov, will help you choose and buy a yacht that best suits your needs **MY GIRLS — GRAND BANKS** from our catalogue. Presently, at Shestakov Yacht Sales Inc., we have a wide variety of yachts available on our sale's list. We also work in close contact with all the big yacht manufacturers from all over the world.

If you would like to buy a yacht **MY GIRLS — GRAND BANKS** or would like help answering any questions concerning purchasing, selling or chartering a yacht, please call **+1(954)274-4435**

# TABLE OF CONTENTS

TABLE OF CONTENTS	2
SPECIFICATIONS	5
Overview	5
Basic Information	5
Dimensions	5
Speed, Capacities and Weight	5
Accommodations	5
Hull and Deck Information	5
Engine Information	6
DETAILED INFORMATION	7
Construction	7
Aft Deck / Cockpit	7
Flybridge	7
Exterior Equipment	8
Engine Room / Mechanical Equipment	9
Electrical Equipment	10
Interior Throughout	11
Salon	11
Galley	12
Helm Area	12
Electronics	12
Master Stateroom	13
Guest Stateroom, Forward	13
Heads	13
Remarks	14
Exclusions	14
Exclusions	14
Disclaimer	14

PHOTOS	15
Transom	15
Swim Platform	15
Sidedeck Port	15
Tender Chocks	15
Sidedeck Stbd	16
Foredeck	16
Bow	16
Foredeck	16
Flybridge Helm	17
Flybridge Helm	17
Flybridge	17
Flybridge	17
Salon	17
Salon	17
Salon	18
Salon	18
Salon	18
Galley	18
Galley	18
Galley	18
Lower Helm	19
Lower Helm	19
Lower Helm Overhead	19
Lower Helm Overhead	19
Master Stateroom	19
Master Stateroom	19
Master Stateroom	20
Master Stateroom	20

---

Master Head	20
Guest Stateroom Entry	20
Guest Stateroom	21
Guest Stateroom	21
Guest Stateroom	21
Guest Head	21
Guest Head	22
Engine Room	22
Engine Room	22
Engine Room	22
Engine Room	22
CONTACTS	23
Contact details	23
Telephones	23
Office hours	23
Address	23

---

# SPECIFICATIONS

---

## Overview

---

This Grand Banks 42 Classic, MY GIRLS, has been maintained to a high degree. She features the walkaround queen master aft with split en suite head and shower. 2014/2015 updates include a new Bimini top, new flybridge cushions, regular teak deck maintenance and much more! Her price has just been reduced for an immediate sale.

## Basic Information

---

**Category:** Motor Yacht

**Sub Category:** Flybridge

**Model Year:** 1990

**Year Built:** 1990

**Country:** United States

## Dimensions

---

**LOA:** 42' 0" (12.80m)

**Beam:** 14' 1" (4.29m)

**Max Draft:** 4' 2" (1.27m)

**Clearance:** 22' 6" (6.86m)

## Speed, Capacities and Weight

---

**Displacement:** 37400 Pounds

**Water Capacity:** 271 Gallons

**Fuel Capacity:** 600 Gallons

## Accommodations

---

**Total Cabins:** 2

**Total Heads:** 2

## Hull and Deck Information

---

**Hull Material:** Fiberglass

---

## Engine Information

---

**Engines:** 2

**Manufacturer:** Caterpillar

**Model:** 3208N

**Engine Type:** Inboard

**Fuel Type:** Diesel

---

# DETAILED INFORMATION

---

## Construction

---

Gel-coated fiberglass exterior

Hand laid fiberglass

## Aft Deck / Cockpit

---

Boarding Passarelle

Extended Teak Swim Platform with Ladder

Transom Washdown / Shower with retractable hose, hot/cold

Large Lazarette storage area

Lazarette hatches, hinged

Teak Transom & Decking

Teak transom boarding steps

Ladder to flybridge, molded fiberglass

Rail gate

Scuppers, stainless steel

## Flybridge

---

Alarm panel, engine temperature & oil pressure

Instrumentation Panel

Teak Steering Wheel

Compass

Teak Decking

Electronics locker

Outlets 12V DC

Venturi windshields

Rail around flybridge windshields, stainless steel

Safety rails, stainless steel

New bimini top

Seats with all new cushions

Storage boxes under seats with teak grating

---

## Exterior Equipment

---

Air horn

Anchor chain locker, divided for rope & chain

Anchor platform, fiberglass, with pulpit

Anchor windlass locker, fiberglass

Bulwark caps, teak

Chocks & Cleats, stainless steel

Deck fills, diesel fuel & water, stainless steel

Decking, teak on front & sidedecks

Engine room vents

Flagstaff holders, bow & stern

Fresh water outlet, forward

Nameboards, teak

Navigation lightboards, teak

Mast & Boom, hinged, aluminum

Rail gates, port & starboard

Safety rails on main deck, teak

Skylight hatch

Staffs, bow & stern, teak



Stanchions, stainless steel

Step plates at rail openings

Vents for fuel & water tanks

Waste pump-out deck fittings, chrome

Windlass, horizontal, rope/chain, three-station, 12V

Window frames, teak

Windshield, center opening

---

## Engine Room / Mechanical Equipment

---

Twin Caterpillar 3208N diesel engines at 210hp each

Throttle & gear shift controls, dual station

Steering, mechanical

Drip pans under engines

Engine raw water intake strainers

Exhaust system, sea-water cooled

Fuel manifold system

Fuel tanks, black iron, baffled

Water tanks, marine aluminum

Separating filters, fuel-water

Water/gas separator installed on gen's exhaust system

Sight gauges on fuel tanks

Fresh water outlet in engine room

Propellers, bronze

Propeller shafts, stainless steel

Rudders, fiberglass

Struts, bronze with bearings

Seacocks on all thru-hulls below waterline

Tiller, emergency

Bilge pump, manual

---

## Electrical Equipment

---

Onan 8kW Generator with soundshield, diesel

(2) 8D Batteries, 12V DC in fiberglass boxes

(1) 4D Battery, 12V DC in fiberglass box

Battery Charging System, automatic

Battery selector switch

50-Amp 240V AC Shorepower with 110V AC Service throughout

Alternator, each engine

Bonding system

Cable, tinned-copper

Carbon monoxide detector

Circuit breakers on all circuits

Engine room blowers, 12V

Engine room lights, 12V

Fresh water system, pressurized, 12V

Galvanic isolator

Generator amp and volt meters

Ground fault circuit interrupters

Holding tank with pump out, 12V

Indicator light, bilge pump

Indicator light, reverse polarity

Navigation lights, 12V

Shore power inlets, AC, bow & stern

Spreader lights on mast, 12V

Water heater

## Interior Throughout

---

AC Outlets

Teak & Formica Bulkheads

Teak Parquet Cabin Sole

Teak Grab Rails

Teak Gratings in Lazarette & Engine Room

Headlining

Curtains, lined

Teak Valances

Interior Lighting, 12V

## Salon

---

L-Settee to starboard

Straight Settee to port

(2) Teak Arm Chairs

Bar Cabinet, dry, teak

Teak Yacht Table

Stereo Cabinet / Bureau, port, teak

Wiring for stereo speakers

Hatches to engine room

Doors, port & starboard

---

## Galley

---

Refrigerator / Freezer, 12V

Range / Oven, AC

Microwave Oven

Exhaust blower, 12V

Corian Countertop

Corian Sink

Faucet, single lever

Teak dish locker with adjustable shelves

Teak drawers

Overhead condiment locker

Garbage bin, fiberglass

---

## Helm Area

---

Alarm panel, engine temperature & oil pressure

Instrumentation panel

Steering wheel with teak rim

Compass

Control panel, AC/DC

Teak electronics locker

Indicator light, reverse polarity

Outlets, 12V DC

Windshield wipers/washer, 12V

---

## Electronics

---

Garmin 4212 Multi-function GPS with Radar (1 unit; wired for 2 stations)

Icom VHF Radios

Autopilot AP 3000

Speed & Depth Logs

(2) Compasses Stereo System

(3) TVs

---

## Master Stateroom

---

Island Berth with 6" foam mattress

Brass reading lamps

Hanging lockers

Teak Bureau with drawers

Teak vanity with chair

Mirrors

Chart drawer

Door cover to cockpit

---

## Guest Stateroom, Forward

---

V-Berth with 6" foam mattress

Drawers under V-Berth

Brass reading lamps

Teak Bureau

Hanging locker, half-size

Mirrors

---

## Heads

---

Marine Toilet

Indicator light, holding tank

Teak Gratings

Cultured Marble Countertop & Sink

Teak Towel rack

Toothbrush holder

Exhaust blower, aft head

Shower stall, separate, aft head

Shower pan with drain pump

---

## Remarks

This Grand Banks 42 Classic, MY GIRLS, has been maintained to a high degree. She features the walkaround queen master aft with split en suite head and shower. 2014/2015 updates include a new Bimini top, new flybridge cushions, regular teak deck maintenance and much more! Her price has just been reduced for an immediate sale.

---

## Exclusions

Owners' personal belongings. A complete list will be provided upon request.

---

## Exclusions

Owner's personal belongings.

---

## Disclaimer

The Company offers the details of this vessel or yacht in good faith but cannot guarantee or warrant the accuracy of this information nor warrant the condition of the vessel. A buyer should instruct his representatives, agents, or his surveyors, to investigate such details as the buyer desires validated. This vessel or yacht is offered subject to prior sale, price change, or withdrawal without notice.

# PHOTOS

**Transom**



**Swim Platform**



**Tender Chocks**



**Sidedeck Port**



**Siddeck Stbd**



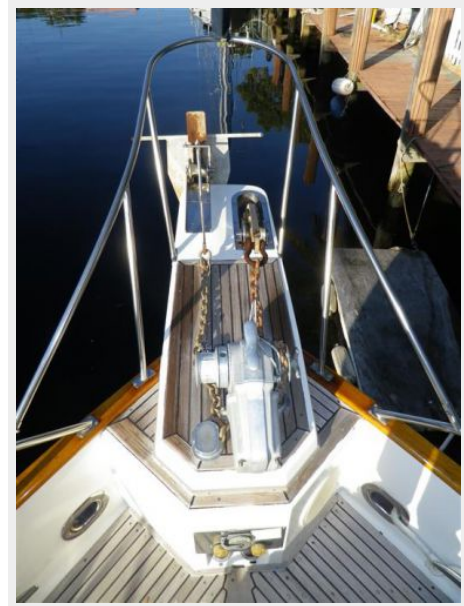
**Foredeck**



**Foredeck**



**Bow**





**Flybridge Helm**



**Flybridge Helm**



**Flybridge**



**Flybridge**



**Salon**



**Salon**



Salon



Salon



Salon



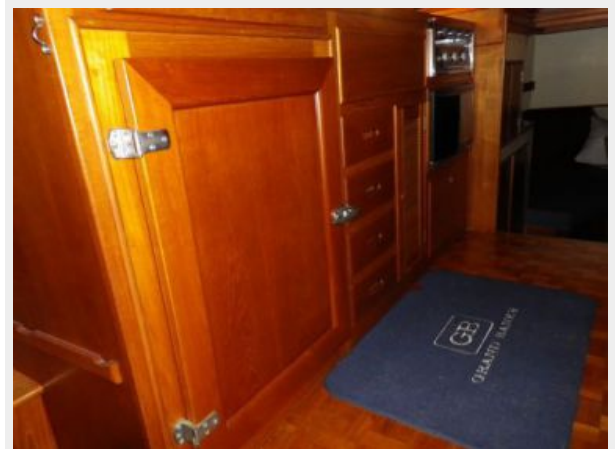
Galley



Galley



Galley





**Lower Helm**



**Lower Helm**



**Lower Helm Overhead**



**Lower Helm Overhead**



**Master Stateroom**



**Master Stateroom**



**Master Stateroom**



**Master Stateroom**



**Master Head**

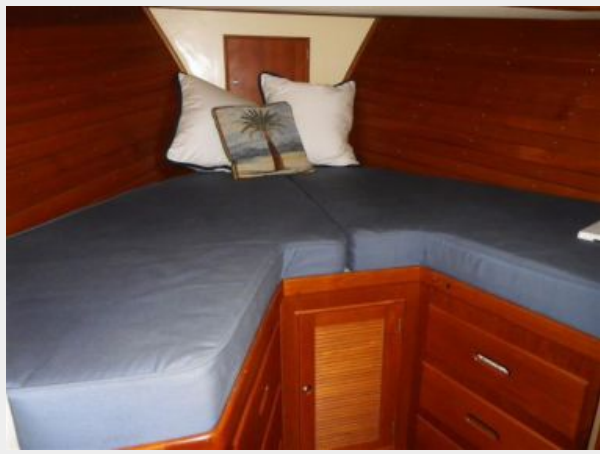


**Guest Stateroom Entry**





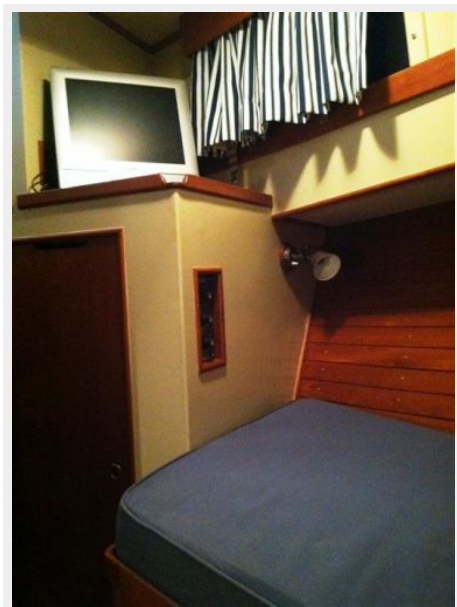
**Guest Stateroom**



**Guest Stateroom**



**Guest Stateroom**



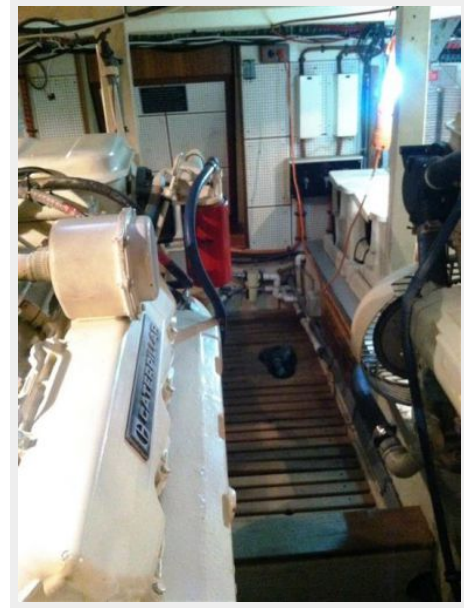
**Guest Head**



**Guest Head**



**Engine Room**



**Engine Room**



**Engine Room**



**Engine Room**



---

# CONTACTS

---

Andrey Shestakov, leading yacht broker of the sales department of Shestakov Yacht Sales Inc. Shestakov Yacht Sales Inc., the official representative of the Miami/Fort Lauderdale FL headquarters.

---

## Contact details

---

Email: [andrey@shestakovyachtsales.com](mailto:andrey@shestakovyachtsales.com)

Web: [shestakovyachtsales.com/en/](http://shestakovyachtsales.com/en/)

---

## Telephones

---

USA: +1(954)274-4435

---

## Office hours

---

Monday – Saturday: **9:00 - 21:00** EDT

Sunday: **closed**

---

## Address

---



Harbour Towne Marina, 850 NE 3rd St,  
STE 213, Dania, FL 33004