

## BIG AL'S BOAT — SEA RAY



**Builder:** SEA RAY

**Year Built:** 2005

**Model:** Cruiser

**Price:** PRICE ON APPLICATION

**Location:** United States

**LOA:** 32' 0" (9.75m)

**Beam:** 11' 5" (3.48m)

**Min Draft:** 2' 9" (0.84m)

Our experienced yacht broker, Andrey Shestakov, will help you choose and buy a yacht that best suits your needs **Big Al's Boat — SEA RAY** from our catalogue. Presently, at Shestakov Yacht Sales Inc., we have a wide variety of yachts available on our sale's list. We also work in close contact with all the big yacht manufacturers from all over the world.

If you would like to buy a yacht **Big Al's Boat — SEA RAY** or would like help answering any questions concerning purchasing, selling or chartering a yacht, please call **+1(954)274-4435**

# TABLE OF CONTENTS

TABLE OF CONTENTS	2
SPECIFICATIONS	4
Overview	4
Basic Information	4
Dimensions	4
Speed, Capacities and Weight	4
Accommodations	4
Hull and Deck Information	5
Engine Information	5
DETAILED INFORMATION	6
Salon	6
Dinette	6
Galley	6
V-Berth	6
Head	6
Mid-Stateroom	7
Helm	7
Electronics	7
Electrical System	7
Engine Room	8
Cockpit	8
Decks	8
Hull	8
Exclusions	9
Disclaimer	9
PHOTOS	10
CONTACTS	16
Contact details	16

---

Telephones	16
Office hours	16
Address	16

---

# SPECIFICATIONS

---

## Overview

---

Clean and always well taken care of. Tops are in great shape, yearly rub and wax - she really shines! Seller is getting out making this opportunity available. Popular cherry interior and all soft goods are in excellent condition.

## Basic Information

---

**Category:** Cruiser

**Sub Category:** Express

**Model Year:** 2005

**Year Built:** 2005

**Country:** United States

**Vessel Top:** 2353

**Cockpit:** Yes

## Dimensions

---

**LOA:** 32' 0" (9.75m)

**Beam:** 11' 5" (3.48m)

**Min Draft:** 2' 9" (0.84m)

**Clearance:** 10' 2" (3.10m)

## Speed, Capacities and Weight

---

**Displacement:** 13200 Pounds

**Water Capacity:** 40 Gallons

**Holding Tank:** 28 Gallons

**Fuel Capacity:** 200 Gallons

## Accommodations

---

**Total Cabins:** 1

**Total Berths:** 2

**Sleeps:** 4

**Total Heads:** 1

---

## Hull and Deck Information

---

**Hull Material:** Fiberglass

---

## Engine Information

---

**Engines:** 2

**Manufacturer:** Mercruiser

**Model:** 350 Magnum

**Engine Type:** Inboard

**Fuel Type:** Gas

---

## DETAILED INFORMATION

---

### Salon

---

- Flatscreen TV next to Galley
- Large flatscreen facing forward on starboard side
- Carpet runners
- Storage under floor
- DVD player
- Dual voltage lighting
- 12,000 BTU air conditioning with integral venting

### Dinette

---

- Crescent shaped sofa converts to berth
- Removable dinette table
- Filler cushions
- Storage under dinette
- Gunwale storage cabinets

### Galley

---

- Two burner stove with Corian cover
- Sink with cover
- Dual voltage refrigerator
- Microwave with coffeemaker
- Upper and lower storage
- Hand rail
- Power vent

### V-Berth

---

- Island style double berth
- Privacy curtain
- Hanging locker
- Mirrored rope locker bulkhead
- Gunwale storage port and starboard

### Head

---

- Vacuflush head
- Hand rail
- Shower with curtain
- Mirror
- Power vent
- Storage medicine cabinet
- Vanity with sink and storage below

---

## Mid-Stateroom

---

- Privacy curtain
- Mirrored bulkhead
- Seating, conversion pit - converts to double berth with slideout
- Storage cabinet

---

## Helm

---

- Extra wide bench style helm seating for two
- High-gloss burl instrument panel
- Shift/throttle controls
- Smart Craft Instrumentation
- Hydraulic steering
- Tilt steering wheel
- Wood accent steering wheel

---

## Electronics

---

- Raymarine C80 Plotter
- Raymarine VHF

---

## Electrical System

---

- Battery charger
- Battery switch
- Isolator, galvanic
- AC & DC electrical panel
- 30 Amp shore power
- TV/Phone inlet
- Color coded wiring

---

## Engine Room

---

- Bilge pump
- Blowers (2)
- Underwater exhaust
- Fire suppression system
- Gel coated engine compartment
- 12V lighting
- Dripless shaft logs

---

## Cockpit

---

- Wetbar with refrigerator
- Large u-shaped seating
- Snap-in carpet
- Transom door
- Self bailing
- Electric engine compartment hatch
- Built-in ice chest
- 12V accessory outlet
- 120V outlet
- Molded fiberglass arch with overhead lighting
- Molded-in boarding steps
- Cockpit table

---

## Decks

---

- Stainless steel bow rail
- Large forward hatch
- Windlass
- Anchor locker
- Remote spotlight
- 2 Fixed port lights

---

## Hull

---

- Bonding system with zincs
- 1 1/2 prop shafts
- Nibral 3 blade props
- Manganese bronze rudders
- Engine sea cocks & strainers



- Trim tabs - hydraulic

## Exclusions

---

Owner's personal belongings.

## Disclaimer

---

The Company offers the details of this vessel or yacht in good faith but cannot guarantee or warrant the accuracy of this information nor warrant the condition of the vessel. A buyer should instruct his representatives, agents, or his surveyors, to investigate such details as the buyer desires validated. This vessel or yacht is offered subject to prior sale, price change, or withdrawal without notice.

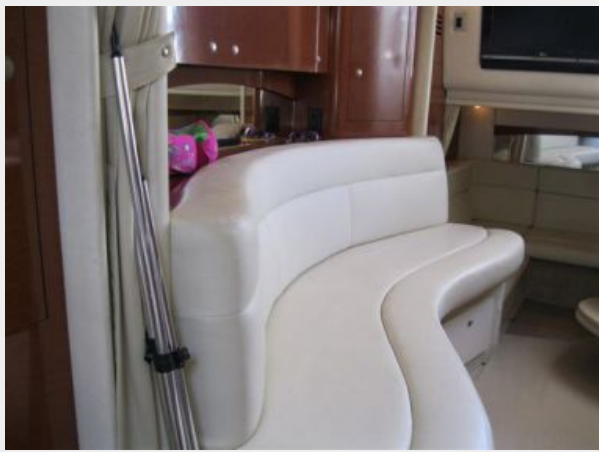
# PHOTOS





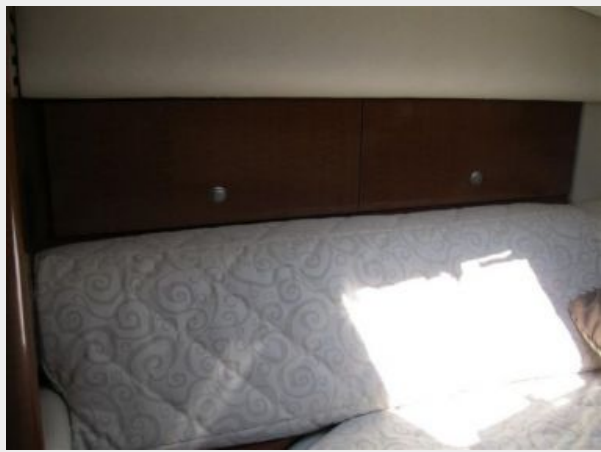












# CONTACTS

---

Andrey Shestakov, leading yacht broker of the sales department of Shestakov Yacht Sales Inc. Shestakov Yacht Sales Inc., the official representative of the Miami/Fort Lauderdale FL headquarters.

## Contact details

---

Email: [andrey@shestakovyachtsales.com](mailto:andrey@shestakovyachtsales.com)

Web: [shestakovyachtsales.com/en/](http://shestakovyachtsales.com/en/)

## Telephones

---

USA: +1(954)274-4435

## Office hours

---

Monday – Saturday: **9:00 - 21:00** EDT

Sunday: **closed**

## Address

---



Harbour Towne Marina, 850 NE 3rd St,  
STE 213, Dania, FL 33004