

SIMA — SANTA MARGHERITA



Судостроитель: SANTA MARGHERITA

Год постройки: 1983

Модель: Моторная яхта

Цена: ЦЕНА ЯХТЫ ПО ЗАПРОСУ

Местонахождение: United States

Длина общая: 97' 0" (29.57m)

Ширина: 18' 2" (5.54m)

Мин. осадка: 8' 5" (2.57m)

Макс. осадка: 8' 5" (2.57m)

Крейс. скорость: 10 Kts. (12 MPH)

Макс. скорость: 11 Kts. (13 MPH)

Купить Sima — SANTA MARGHERITA а также выбрать подходящую вам яхту из нашего каталога яхт вам поможет опытный яхтенный брокер Андрей Шестаков. На сегодняшний день компания Shestakov Yacht Sales Inc. имеет большое количество яхт в собственном списке продаж, а также тесно сотрудничает со всеми крупными яхтенными производителями по всему миру.

Для того чтобы купить яхту Sima — SANTA MARGHERITA а также проконсультироваться по любому вопросу связанному с покупкой, продажей, чартером яхт позвоните по телефону **+7(918)465-66-44**.

ОГЛАВЛЕНИЕ

ОГЛАВЛЕНИЕ	2
ХАРАКТЕРИСТИКИ	7
Обзор	7
Основная информация	7
Размеры	7
Скорость, вместимость и масса	7
Размещение	8
Корпус и палуба	8
Информация о двигателе	8
ПОДРОБНОЕ ОПИСАНИЕ	9
97' Santa Margherita Overview	9
97' Santa Margherita Vessel Walkthrough	9
97' Santa Margherita Accommodations	9
97' Santa Margherita Salon	9
97' Santa Margherita Galley	9
97' Santa Margherita Dining	10
97' Santa Margherita Media Room	10
97' Santa Margherita Master Stateroom	10
97' Santa Margherita VIP Guest Stateroom	11
97' Santa Margherita Guest Staterooms	11
97' Santa Margherita Crew Quarters	11
97' Santa Margherita Laundry	11
97' Santa Margherita Pilothouse	11
97' Santa Margherita Flybridge	11
97' Santa Margherita Aftdeck	11
97' Santa Margherita Audio/Visual Equipment	12
97' Santa Margherita Electronics	12
97' Santa Margherita Electrical System	13

97' Santa Margherita Engine/Mechanical Equipment	13
97' Santa Margherita Deck Equipment	14
97' Santa Margherita Tender	14
97' Santa Margherita Safety & Fire Protection	15
97' Santa Margherita Exclusions	15
97' Santa Margherita Disclaimer	15
Исключения	15
Отказ от ответственности	15
ФОТОГРАФИИ	16
97' Santa Margherita port aft profile	16
97' Santa Margherita starboard profile	16
97' Santa Margherita starboard forward profile	16
97' Santa Margherita port aft profile photo2	16
97' Santa Margherita starboard aft profile	17
97' Santa Margherita aft profile	17
97' Santa Margherita anchor windlass	17
97' Santa Margherita foredeck	17
97' Santa Margherita port side deck photo1	18
97' Santa Margherita foredeck sunpad	18
97' Santa Margherita starboard side deck photo1	18
97' Santa Margherita port side deck photo2	18
97' Santa Margherita starboard side deck photo2	19
97' Santa Margherita flybridge forward	19
97' Santa Margherita flybridge port	19
97' Santa Margherita flybridge aft	19
97' Santa Margherita flybridge helm photo2	20
97' Santa Margherita flybridge helm photo1	20
97' Santa Margherita flybridge helm engine controls	20
97' Santa Margherita flybridge helm benchseat	20

97' Santa Margherita tender photo1	21
97' Santa Margherita flybridge aft seating	21
97' Santa Margherita tender photo2	21
97' Santa Margherita tender davit	21
97' Santa Margherita aftdeck port	21
97' Santa Margherita aftdeck	21
97' Santa Margherita aftdeck-flybridge stairs	22
97' Santa Margherita aftdeck starboard	22
97' Santa Margherita salon forward	22
97' Santa Margherita aftdeck overhead	22
97' Santa Margherita salon port	22
97' Santa Margherita salon aft	22
97' Santa Margherita salon starboard	23
97' Santa Margherita dining table	23
97' Santa Margherita galley starboard	23
97' Santa Margherita galley forward	23
97' Santa Margherita galley port	24
97' Santa Margherita media room forward	24
97' Santa Margherita media room aft	24
97' Santa Margherita pilothouse forward	24
97' Santa Margherita pilothouse port	24
97' Santa Margherita pilothouse aft	24
97' Santa Margherita pilothouse starboard	25
97' Santa Margherita pilothouse helm	25
97' Santa Margherita master stateroom port	25
97' Santa Margherita master stateroom	25
97' Santa Margherita master stateroom starboard	25
97' Santa Margherita master stateroom forward	25
97' Santa Margherita master stateroom walk-in closet	26

97' Santa Margherita master stateroom head	26
97' Santa Margherita master stateroom shower	26
97' Santa Margherita VIP guest stateroom	26
97' Santa Margherita VIP guest stateroom port	27
97' Santa Margherita VIP guest stateroom aft	27
97' Santa Margherita VIP guest stateroom head	27
97' Santa Margherita VIP guest stateroom shower	27
97' Santa Margherita port guest stateroom head	28
97' Santa Margherita port stateroom	28
97' Santa Margherita starboard guest stateroom forward	28
97' Santa Margherita starboard guest stateroom	28
97' Santa Margherita starboard guest stateroom head	29
97' Santa Margherita wine storage	29
97' Santa Margherita engine room starboard forward	29
97' Santa Margherita engine room forward	29
97' Santa Margherita port main engine photo1	30
97' Santa Margherita engine room aft	30
97' Santa Margherita port main engine photo2	30
97' Santa Margherita starboard main engine photo2	30
97' Santa Margherita starboard main engine photo3	31
97' Santa Margherita starboard main engine photo1	31
97' Santa Margherita bilge manifold	31
97' Santa Margherita fuel manifold	31
97' Santa Margherita pilothouse electrical panel	32
97' Santa Margherita engine room electrical panels	32
97' Santa Margherita port generator sound box	32
97' Santa Margherita night generator	32
97' Santa Margherita starboard generator sound box	32
97' Santa Margherita port generator	32

97' Santa Margherita starbaord generator	33
КОНТАКТЫ	34
Контактная информация	34
Телефоны	34
Время работы	34
Адрес	34

ХАРАКТЕРИСТИКИ

Обзор

Sima is a very well-maintained classic motoryacht offering a 4 stateroom 4 head layout, modern, updated interior and a raised pilothouse design. She has a full time crew onboard and is available to be seen anytime. Price reduced!

Основная информация

Тип судна: Моторная яхта

Подкатегория: Pilothouse

Модельный год: 1983

Год постройки: 1983

Страна: United States

Верх: Hardtop

Открытая палуба мостика: Да

Размеры

Длина общая: 97' 0" (29.57m)

Ширина: 18' 2" (5.54m)

Мин. осадка: 8' 5" (2.57m)

Макс. осадка: 8' 5" (2.57m)

Скорость, вместимость и масса

Крейс. скорость: 10 Kts. (12 MPH)

Макс. скорость: 11 Kts. (13 MPH)

Вместимость воды: 500 Gallons

Вместимость сточного бака: 200 Gallons

Объем топливного бака: 5600 Gallons

Размещение

Всего кают: 4

Всего коек: 8

Спальные места: 8

Всего ком. состава: 4

Каюты экипажа: 1

Койки экипажа: 4

Спальных мест экипажа: 4

Комм. состав экипажа: 1

Корпус и палуба

Материал корпуса: Steel

Материал палубы: Steel

Комплектация корпуса: Full
Displacement

Цвет корпуса: White

Отделка корпуса: Steel

Информация о двигателе

Двигатели: 2

Производитель: Gardner

Модель: 8L3B

Тип двигателя: Inboard

Тип топлива: Diesel

ПОДРОБНОЕ ОПИСАНИЕ

97' Santa Margherita Overview

Sima is a very well-maintained classic motoryacht offering a 4 stateroom 4 head layout, modern, updated interior and a raised pilothouse design. She has a full time crew onboard and is available to be seen anytime. Price reduced!

97' Santa Margherita Vessel Walkthrough

Stepping up the side gangway to the starboard side deck, you can enter the interior from the amidships access door and walk forward into the media room or up stairs to the pilothouse and flybridge or down stairs to the guest staterooms. Otherwise, you can walk to port into the galley or walk aft to the salon and master stateroom entrance. There is also a port side deck access door from the galley. Once in the salon, you will find a dining table forward, sofas on both sides with a coffee table on the port side, storage cabinetry and refrigerator port aft, electric, sliding glass door to the aftdeck and then stairs to the master stateroom starboard aft. The classic rounded-stern aftdeck offers a beautiful teak overhead, same level access to each side deck and stairs port forward to the flybridge. The engine room is accessed via a door on the port side deck.

97' Santa Margherita Accommodations

Sima offers a full beam master stateroom aft with a centerline queen size berth, ensuite head and a private entrance. Then there are three guest staterooms forward, with the VIP guest stateroom offering a centerline queen size berth and ensuite head and then two staterooms with side by side single berths, pullman berths and ensuite heads. The crew quarters are forward.

97' Santa Margherita Salon

The large salon offers shelves and storage port forward, a sofa, coffee table and side table to port, a glass storage cabinet and enclosed refrigerator port aft, a sliding glass door aft, entrance to the master stateroom starboard aft and a sofa to starboard. There is carpet and motorized side window blinds.

97' Santa Margherita Galley

The galley is located to port about amidships on the main deck.

- SMEG 4-burner ceramic cooktop
- Gaggenau stainless steel oven

- Gaggenau stainless steel vent hood
- SMEG stainless steel microwave oven
- SMEG refrigerator/freezer
- SMEG under-counter refrigerator
- Pantry, cabinets and drawers
- Port side deck access door
- Portlight
- Revox flat screen TV
- B&G Hydra 2000 wind gauge

Additional equipment elsewhere in the vessel:

- 2 X Liebherr wine coolers in the dry storage room
- Under counter refrigerator in the salon port aft cabinetry

97' Santa Margherita Dining

The dining table is located forward in the salon and include four chairs and built-in seating forward. There are also dining tables on the flybridge and aftdeck.

97' Santa Margherita Media Room

The media room is forward on the main deck and offers a sofa and two ottomans, windows forward and opening windows on each side, storage cabinets to port, a built-in desk port aft, storage aft, storage drawers to starboard, motorized shades, carpet and full entertainment system as described in the audio/visual equipment section.

97' Santa Margherita Master Stateroom

The full beam master stateroom is located aft and offers a centerline queen size berth, nightstands, reading lights, 4 portlights, carpet, built-in seating on both sides, two hanging lockers, storage drawers and cabinets, and a JVC flat screen TV.

The ensuite head includes an enclosed shower, granite countertop, glass sink, Tecma head and storage drawers and cabinets.

97' Santa Margherita VIP Guest Stateroom

The VIP guest stateroom is located forward and offers a centerline queen size berth with storage underneath, nightstands, reading lights, carpet, storage drawers and cabinet, hanging locker, 2 portlights, Revox flat screen TV and sliding Shoji style shades.

The ensuite head offers granite countertop, custom sink, enclosed shower, Tecma head, portlight and shelves and storage cabinet.

There is a linen closet in the guest foyer.

97' Santa Margherita Guest Staterooms

The port and starboard guest staterooms both offer side by side single berths, pullman berth, nightstand, reading lights, carpet, 2 portlights, hanging locker and Revox flat screen TV.

Each ensuite head offers an enclosed shower, granite countertop, portlight and Tecma head.

97' Santa Margherita Crew Quarters

- 2 cabins forward with over/under bunks and ensuite head, vinyl teak & holly sole and flat screen TV's in each cabin.

97' Santa Margherita Laundry

- Miele washer/dryer in the crew quarters

97' Santa Margherita Pilothouse

The raised pilothouse offers a full console forward, a Bensenzoni helm seat, built-in L-shaped seating port and aft, shelves, carpet, opening side windows and steps to the flybridge.

97' Santa Margherita Flybridge

The flybridge offers a full helm forward, helm benchseat, Radar arch and hardtop, full Eisenglass enclosure, built-in seating, 4 teak chairs and a table and teak deck.

The Boat Deck offers tender storage, tender davit and a hatch and stairs to the aftdeck.

97' Santa Margherita Aftdeck

The aftdeck offers built-in seating aft, a table and 4 chairs, teak deck, teak overhead, full Eisenglass enclosure, sliding stainless steel & glass salon door with motion detector control and stairs to the flybridge.

97' Santa Margherita Audio/Visual Equipment

- Seatel satellite TV system
- Seatel control panel in the pilothouse
- Revox central audio/visual system throughout vessel
- JVC flat screen TV's in the media room and master stateroom
- Revox flat screen TV's in the guest staterooms and galley
- Revox M51 modular AV system in the media room
- Revox M37 audio server in the media room
- DirecTV satellite TV receivers in the media room and master stateroom
- Revox audio control panel with a MX3000 remote control in the VIP guest stateroom
- Revox control panel on the flybridge
- Key Digital 2 X 1 component video switcher in the master stateroom
- Yamaha SS557 DVD player in the master stateroom

97' Santa Margherita Electronics

- Koden 72nm Radar
- Nobeltec Radar
- Furuno FCV-611 color video sounder in the pilothouse
- Furuno DGPS GP-37 GPS/WAAS Navigator in the pilothouse
- Aqua Meter magnetic compass in the pilothouse
- Sitex Vector 3-D GPS compass in the pilothouse
- Urania magnetic compass on the flybridge
- B & G Hercules 2000 wind/depth gauge in the pilothouse

- B & G Hydra 2000 wind/depth gauge on the flybridge and in the galley
- Simrad AP20 autopilot with controls in the pilothouse and on the flybridge
- Simrad RS86 VHF in the pilothouse
- Simrad RS87 VHF on the flybridge
- Sailor HC4500B SSB in the pilothouse
- Icom MA-500TR Class B AIS transponder on the flybridge
- McMurdo ICS Nav5 Plus GMDSS Navtex receiver in the pilothouse
- Schatz ship's clock and barometer in the pilothouse
- Panasonic telephone/intercom system
- KVH Tracphone satellite telephone system

97' Santa Margherita Electrical System

- 2 X Kohler 31kW generators (6,810 hours on port, 6,798 hours on starboard)
- Kohler 11 kW night generator
- 2 X Altiva 61 4kW frequency drives for the air conditioning system
- Mastervolt 24vdc 5000 watt inverter and control panel

97' Santa Margherita Engine/Mechanical Equipment

- Twin Gardner 8L3B 230hp main engines (Approximately 10,000 hours)
- Twin Disc gearboxes
- ZF MicroCommander electronic engine controls
- Smiths and VDO gauges
- Racor 1000MA fuel polishing system
- Fuel manifold
- WWI Proytec corrosion protection system
- Arid Bilge Systems Series 4 dry bilge system

- Bilge manifold
- Vosper Thornycraft 2/L stabilizer system with Naiad controls
- BCS bowthruster
- Cruisair reverse cycle air-conditioning/heating system
- 3 X Clima 9kW electric heating systems
- Tecma heads
- 4 X Tankwatch 4 tank level monitoring systems

97' Santa Margherita Deck Equipment

- Dual gypsy anchor windlass
- Fresh water hot/cold shower on the foredeck
- Fresh water washdown on the foredeck, aftdeck flybridge
- Stainless steel hand rails over teak cap rails
- Stainless steel deck hardware
- Capstan port aftdeck
- Bulwark boarding doors on each side and side gangway on starboard side
- Teak decks
- Foredeck sunpad and built-in seating

97' Santa Margherita Tender

- Zodiac 17'5" Yacht Line 470DL RIB
- Yamaha 75hp 4-stroke outboard
- Icom IC-M304 VHF in tender
- Garmin GPSMap 441s chart plotter in tender
- Sanguineti Chiavari 4,400lb tender davit

97' Santa Margherita Safety & Fire Protection

- Fire alarm system
- Sanshin HR searchlight
- 2 X Zodiac 8 person liferafts
- 2 X Zodiac 6 person liferafts
- Carbon monoxide and smoke alarms throughout vessel
- Pelco security camera system
- Bilge alarm panel

97' Santa Margherita Exclusions

- Seller's and crew's personal belongings
- Artwork

97' Santa Margherita Disclaimer

The Company offers the details of this vessel in good faith but cannot guarantee or warrant the accuracy of this information nor warrant the condition of the vessel. A buyer should instruct his agents, or his surveyors, to investigate such details as the buyer desires validated. This vessel is offered subject to prior sale, price change, or withdrawal without notice.

Исключения

При продаже яхты исключаются личные вещи владельца.

Отказ от ответственности

Компания предоставляет описание судна или яхты добросовестно, но не может гарантировать точность этой информации, а также не ручается за техническое состояние. Покупатель должен проинструктировать своих агентов или оценщиков исследовать представленную информацию более подробно, по собственному желанию. Продажа судна или яхты, изменение цены или снятие с продажи будет происходить без предварительного уведомления.

ФОТОГРАФИИ

97' Santa Margherita starboard profile



97' Santa Margherita port aft profile



97' Santa Margherita port aft profile photo2



97' Santa Margherita starboard forward profile



97' Santa Margherita starboard aft profile



97' Santa Margherita aft profile



97' Santa Margherita anchor windlass



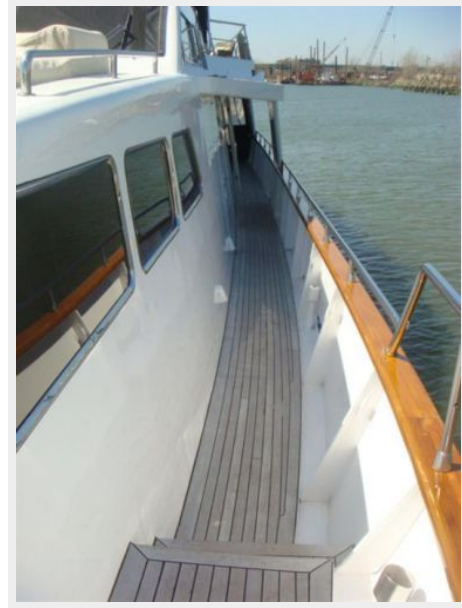
97' Santa Margherita foredeck



97' Santa Margherita foredeck sunpad



97' Santa Margherita port side deck photo1



97' Santa Margherita port side deck photo2



97' Santa Margherita starboard side deck photo1



**97' Santa Margherita starboard side deck
photo2**



97' Santa Margherita flybridge forward



97' Santa Margherita flybridge aft



97' Santa Margherita flybridge port



97' Santa Margherita flybridge helm photo2

97' Santa Margherita flybridge helm photo1



97' Santa Margherita flybridge helm engine controls



97' Santa Margherita flybridge helm benchseat



97' Santa Margherita flybridge aft seating



97' Santa Margherita tender photo1



97' Santa Margherita tender photo2



97' Santa Margherita tender davit



97' Santa Margherita aftdeck



97' Santa Margherita aftdeck port



97' Santa Margherita aftdeck starboard



97' Santa Margherita aftdeck-flybridge stairs



97' Santa Margherita aftdeck overhead



97' Santa Margherita salon forward



97' Santa Margherita salon aft



97' Santa Margherita salon port



97' Santa Margherita salon starboard



97' Santa Margherita dining table



97' Santa Margherita galley starboard



97' Santa Margherita galley forward



97' Santa Margherita galley port



97' Santa Margherita media room forward



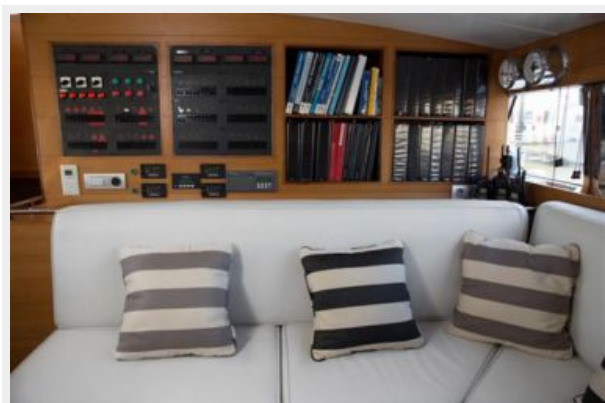
97' Santa Margherita media room aft



97' Santa Margherita pilothouse forward



97' Santa Margherita pilothouse aft



97' Santa Margherita pilothouse port



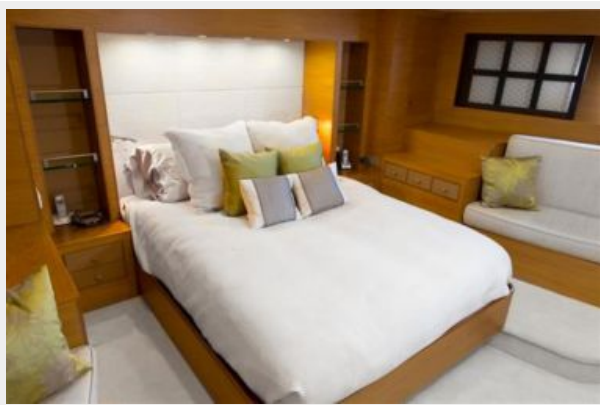
97' Santa Margherita pilothouse starboard



97' Santa Margherita pilothouse helm



97' Santa Margherita master stateroom



97' Santa Margherita master stateroom port



97' Santa Margherita master stateroom starboard



97' Santa Margherita master stateroom forward



97' Santa Margherita master stateroom walk-in closet



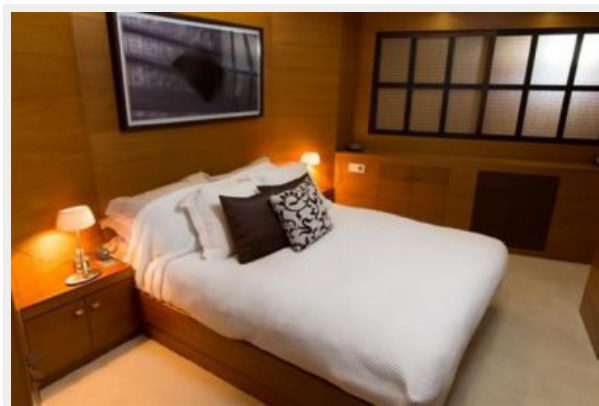
97' Santa Margherita master stateroom head



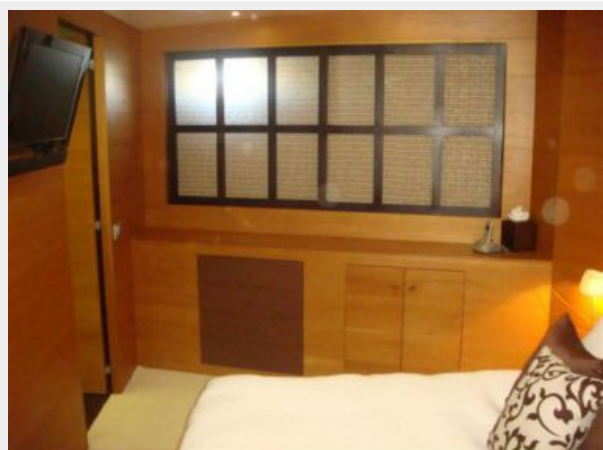
97' Santa Margherita master stateroom shower



97' Santa Margherita VIP guest stateroom



97' Santa Margherita VIP guest stateroom port



97' Santa Margherita VIP guest stateroom aft



97' Santa Margherita VIP guest stateroom head

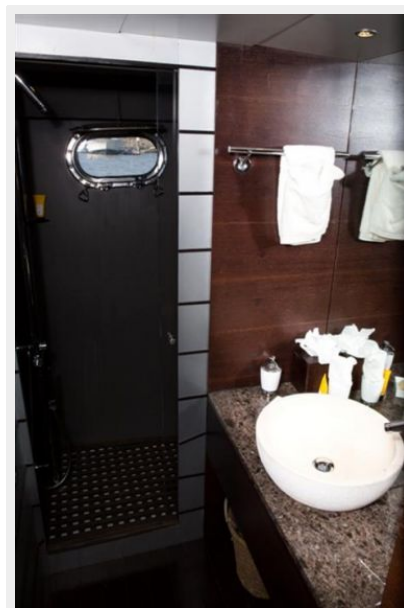


97' Santa Margherita VIP guest stateroom shower



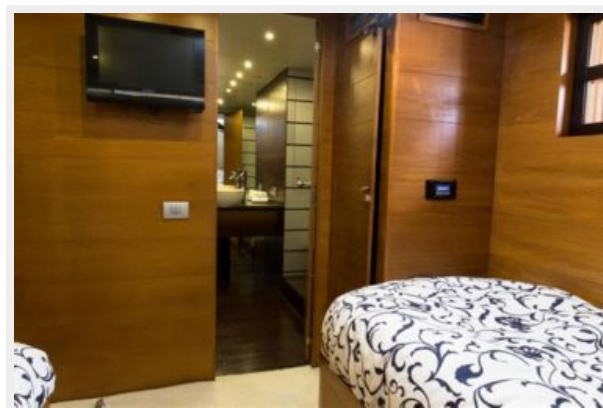
97' Santa Margherita port guest stateroom head

97' Santa Margherita port stateroom

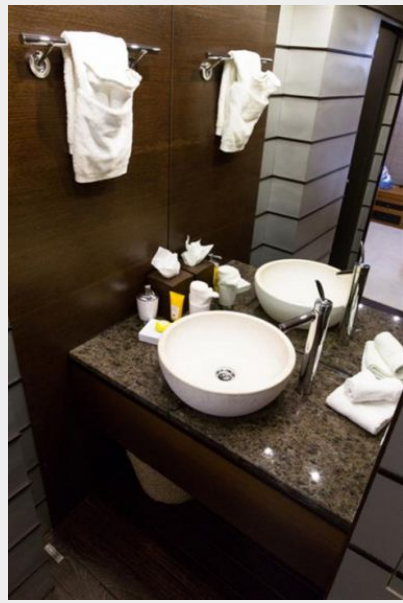


97' Santa Margherita starboard guest stateroom

97' Santa Margherita starboard guest stateroom forward



97' Santa Margherita starboard guest stateroom head



97' Santa Margherita wine storage



97' Santa Margherita engine room starboard forward

97' Santa Margherita engine room forward



97' Santa Margherita engine room aft



97' Santa Margherita port main engine photo1



97' Santa Margherita port main engine photo2



97' Santa Margherita starboard main engine photo2



97' Santa Margherita starboard main engine photo3



97' Santa Margherita starboard main engine photo1



97' Santa Margherita bilge manifold



97' Santa Margherita fuel manifold



97' Santa Margherita pilothouse electrical panel



97' Santa Margherita engine room electrical panels



97' Santa Margherita night generator



97' Santa Margherita port generator sound box



97' Santa Margherita port generator



97' Santa Margherita starboard generator sound box



97' Santa Margherita starbaord generator



КОНТАКТЫ

Андрей Шестаков (Andrey Shestakov) – ведущий яхтенный брокер отдела продаж яхт и судов компании Shestakov Yacht Sales Inc. Официальный представитель Shestakov Yacht Sales Inc. для русскоговорящих клиентов в центральном офисе компании в Майами/Форт Лодердейл/Флорида/США.

Контактная информация

Email: andrey@shestakovyachtsales.com

Web: shestakovyachtsales.com

Телефоны

Краснодарский край: **+7(918)465-66-44**

США, Майами, Флорида: **+1(954)274-4435**

Время работы

Понедельник – Суббота: **9:00 - 21:00**
EDT

Воскресенье: **Закрето**

Адрес



Harbour Towne Marina, 850 NE 3rd St,
STE 213, Dania, FL 33004