

DORADO — BUDDY DAVIS



Builder: BUDDY DAVIS

Year Built: 2006

Model: Center Console

Price: PRICE ON APPLICATION

Location: United States

LOA: 34' 0" (10.36m)

Beam: 10' 6" (3.20m)

Max Draft: 2' 0" (0.61m)

Cruise Speed: 40 Kts. (46 MPH)

Max Speed: 50 Kts. (58 MPH)

Our experienced yacht broker, Andrey Shestakov, will help you choose and buy a yacht that best suits your needs **DORADO — BUDDY DAVIS** from our catalogue. Presently, at Shestakov Yacht Sales Inc., we have a wide variety of yachts available on our sale's list. We also work in close contact with all the big yacht manufacturers from all over the world.

If you would like to buy a yacht **DORADO — BUDDY DAVIS** or would like help answering any questions concerning purchasing, selling or chartering a yacht, please call **+1(954)274-4435**

TABLE OF CONTENTS

| | |
|------------------------------|----|
| TABLE OF CONTENTS | 2 |
| SPECIFICATIONS | 3 |
| Overview | 3 |
| Basic Information | 3 |
| Dimensions | 3 |
| Speed, Capacities and Weight | 3 |
| Hull and Deck Information | 3 |
| Engine Information | 4 |
| DETAILED INFORMATION | 5 |
| Vessel Information | 5 |
| Exclusions | 7 |
| Disclaimer | 7 |
| PHOTOS | 8 |
| CONTACTS | 12 |
| Contact details | 12 |
| Telephones | 12 |
| Office hours | 12 |
| Address | 12 |

SPECIFICATIONS

Overview

This amazing 34' sportfish offering 10'6" Beam with a 24.5 degree deep vee, and a ride that's smooth, dry, and totally exhilarating! Superior craftsmanship and design genius has created a center console sport fish that is a pleasure to own and fish day in and day out. Take Advantage of Getting Into This Rare Find!

This Buddy Davis is Powered by Twin 2006 Mercury Verados 275hp. Included: Power Trim and Tilt, Walk Thru Tansom Door w/ Hatch, Foward Console Seating/ Insulated Cooler, 2 Foward Recessed Rod lockers, Coaming Bulsters, Pop Up Cleats, Courtesy lights Console and Cockpit, 12 Volt battery Charger, Marine/Electronic Head, 45 Gallon Live Well, Fresh and Salt Water Wash Down.

Basic Information

Category: Center Console

Model Year: 2006

Year Built: 2006

Country: United States

Dimensions

LOA: 34' 0" (10.36m)

Beam: 10' 6" (3.20m)

Max Draft: 2' 0" (0.61m)

Speed, Capacities and Weight

Cruise Speed: 40 Kts. (46 MPH)

Max Speed: 50 Kts. (58 MPH)

Holding Tank: 64 Gallons

Fuel Capacity: 300 Gallons

Hull and Deck Information

Hull Material: Fiberglass

Engine Information

Engines: 2

Manufacturer: Mercury

Model: Verado

Engine Type: Outboard

Fuel Type: Gas

DETAILED INFORMATION

Vessel Information

CONSTRUCTION

Advanced fiberglass composite construction, featuring vacuum infused resin hulls and decks. All coring is closed cell foam

CENTER CONSOLE

- Custom Steering Wheel w/ Knob
- Wide - Bi-fold Entry Door To Head
- Hinged Console Face for Easy Access
- Inner Console Gel Coat Liner
- Head - Toilet w/ Electric Macerator, "Y" Valve, Holding Tank
- Stand-Up Head w/ Sink & Hand-Held Shower
- Compass
- Coded Accessible Electrical Wirings

MECHANICAL/ELECTRICAL EQUIPMENT

- 300- Gallons Fuel - Aluminum Tank
- 64- Gallons Water - 2 ea. Poly Mold Tanks
- Molded Integral Engine Bracket
- Dual Cylinder Trim Tabs w/ Tilt Gauge
- Dual Fuel / Water Separators
- All Deck Hardware Stainless Steel
- Custom Vinyl Rub Rails w/ 3/4" SS Molding
- Seacocks On All Below Waterline Fittings
- Power Steering
- Battery Management Panel
- Bonded Electrical System
- International Navigation Lights
- Weather Resistant Switching Panel
- Courtesy Lights in Console & Cockpit
- Marine Grade Electrical Wiring
- Accessory Outlet in Console
- Electric Panel w/ Back Lit Breakers

COCKPIT & FORWARD DECK

- Walk Thru Transom Door with Latch
- 2 ea. Under Deck Fishboxes w/ Macerator
- Waterway With Drains On All Hatches

- Non Skid Deck and Coverboards
- 2 ea. Forward Coverboard Recessed Rod
- Lockers with Gel Coat Inner Liner
- 2 ea. Side Mount Tackle Storage Stations
- Molded Insulated Drink Box With Cushioned Seat
- Anchor Locker w/ Lift Up Hatch
- Large Lazzarette Access Hatch
- 6 ea. Stainless Steel Rod Holders in Gunwales
- Aluminum Safety Rails in Gunwale
- Helm Seat with Tackle Storage, 5 Rod Holder, 50 Gallon Livewell
- Full Wrap Around Coaming
- Fwd Underdeck Storage/Fishbox w/Macerator

RIGGING

- Engine Control & Monitoring System
- Engine Cables & Harness in Accessible Wire Chases
- Battery Paralll System
- Binnacle Control Station on Helm w/ Power Tilt & Trim

Deck and Hull

- Taco telescopic outriggers
- Taco Grand Slam outrigger mounts
- Spreader lights
- Cockpit light
- Navigation lights
- Walk thru transom door with latch
- Custom leaning Post with livewell and tackle storage
- (2) Side mount tackle storage stations
- Molded insulated drink box in forward deck seating
- Anchor locker lift up hatch
- Anchor, chain and rode
- Stern mount for boarding ladder
- Folding removable stern seating
- Custom bow seating
- Coaming bolster
- (2) Forward cover board recessed rod lockers
- (6) Stainless steel rod holders in gunwale
- (5) Rod holders in rocket launcher
- (5) Rod holders in T-top
- (5) Recessed cleats
- Stainless steel pop out cleats
- Forward seating
- Recess aluminum safety rail molded in gunwale

- Fresh water washdown
- Salt water washdown

Electronics and Navigation

- Furuno Navnet GPS / 12" LCD display
- Furuno VHF
- Simrad Autopilot
- Clarion CMD6 AM/FM Radio
- (4) JBL Marine speakers

Engine and Mechanical

- Twin 275 HP Mercury Verado 4 Stroke engines
- Hydraulic Steering
- Engine control & monitoring system
- Fuel gauges
- Lenco hydraulic trim tabs
- Dual Fuel-Water Separators
- (2) Bilge pumps with automatic switches
- Hi-water alarm
- Holding tank level indicator

Electrical

- (2) Interstate 27 Batteries
- Lockable battery switch system
- 12V distribution panel

Exclusions

Owner's personal belongings.

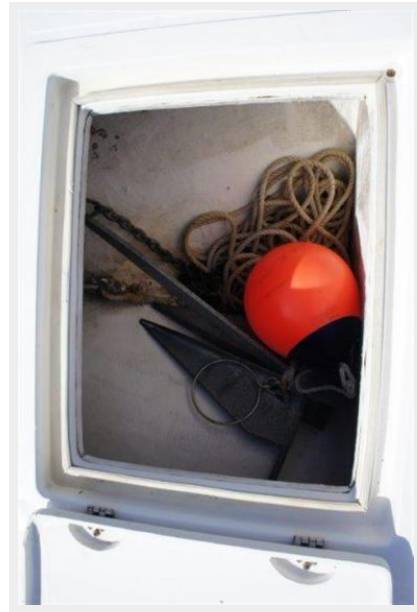
Disclaimer

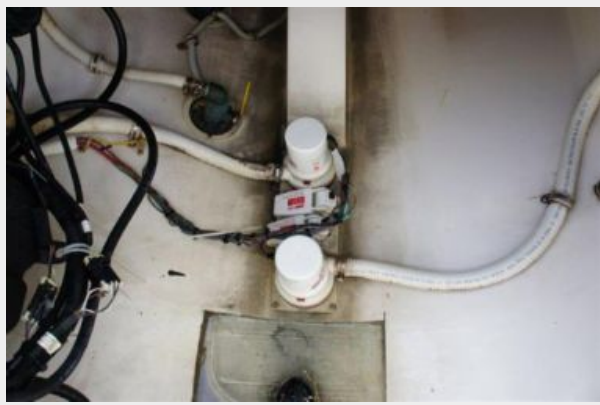
The Company offers the details of this vessel or yacht in good faith but cannot guarantee or warrant the accuracy of this information nor warrant the condition of the vessel. A buyer should instruct his representatives, agents, or his surveyors, to investigate such details as the buyer desires validated. This vessel or yacht is offered subject to prior sale, price change, or withdrawal without notice.

PHOTOS









CONTACTS

Andrey Shestakov, leading yacht broker of the sales department of Shestakov Yacht Sales Inc. Shestakov Yacht Sales Inc., the official representative of the Miami/Fort Lauderdale FL headquarters.

Contact details

Email: andrey@shestakovyachtsales.com

Web: shestakovyachtsales.com/en/

Telephones

USA: +1(954)274-4435

Office hours

Monday – Saturday: **9:00 - 21:00** EDT

Sunday: **closed**

Address



Harbour Towne Marina, 850 NE 3rd St,
STE 213, Dania, FL 33004