

## SUNREEF 70 — SUNREEF



**Судостроитель:** [SUNREEF](#)

**Год постройки:** 2012

**Модель:** Катамаран

**Цена:** ЦЕНА ЯХТЫ ПО ЗАПРОСУ

**Местонахождение:** United States

**Длина общая:** 71' 5" (21.77m)

**Ширина:** 34' 0" (10.36m)

**Мин. осадка:** 6' 2" (1.88m)

Купить Sunreef 70 — SUNREEF а также выбрать подходящую вам яхту из нашего каталога яхт вам поможет опытный яхтенный брокер Андрей Шестаков. На сегодняшний день компания Shestakov Yacht Sales Inc. имеет большое количество яхт в собственном списке продаж, а также тесно сотрудничает со всеми крупными яхтенными производителями по всему миру.

Для того чтобы купить яхту Sunreef 70 — SUNREEF а также проконсультироваться по любому вопросу связанному с покупкой, продажей, чартером яхт позвоните по телефону **+7(918)465-66-44**.

# ОГЛАВЛЕНИЕ

---

|                               |    |
|-------------------------------|----|
| ОГЛАВЛЕНИЕ                    | 2  |
| ХАРАКТЕРИСТИКИ                | 3  |
| Обзор                         | 3  |
| Основная информация           | 9  |
| Размеры                       | 9  |
| Скорость, вместимость и масса | 9  |
| Размещение                    | 10 |
| Корпус и палуба               | 10 |
| Информация о двигателе        | 10 |
| ФОТОГРАФИИ                    | 11 |
| КОНТАКТЫ                      | 15 |
| Контактная информация         | 15 |
| Телефоны                      | 15 |
| Время работы                  | 15 |
| Адрес                         | 15 |

# ХАРАКТЕРИСТИКИ

---

## Обзор

---

### Construction

- Hulls, deck, flybridge and all structural bulkheads constructed of glass/ vinyl ester sandwich laminate with carbon reinforcement by infusion process
- Rudders constructed of molded glass/ vinyl ester. Rudder stock are in aluminum alloy
- Extended re-enforced longitudinal beam
- Catwalk fitted on the forward beam
- Aft platform

### Rigging & Sails

- Carbon mast with incorporated LEDs
- Carbon boom
- Plastic protection on the shrouds
- Lazy jack
- Fully battened mainsail hydranet tri-radial cut
- Hydranet genoa, mixed dacron/spectra
- Mast steps up to boom
- Gennaker polyester
- Complete gear for gennaker
- Electric furling system for genoa

### Mechanics

- 2 complete engines 260HP (Yanmar 6BY2-260)
  - port engine 1072 hours (June 2014)
  - starboard engine 1019 hours (June 2014)
- 2x Yanmar KMH50A gearbox
  - port gearbox 1072 hours (June 2014)
  - starboard gearbox 1019 hours (June 2014)
- Pair of four-bladed feathering propellers (VARIPROP DF-140)
- Stainless steel shafts

- 2 engine speed controls (one at the navigation table and one on the flybridge)
- 2 electric pump + 1 manual for fuel tanks
  - 2x JABSCO 23870-1300 9GPM 24V Diesel Fuel Transfer Pump
- Lights in the engine rooms
- Consumption estimation system (Yanmar Digital engine displays)
- 2x electric bow thrusters (by Max Power CT225, bow thruster 250 mm 440kg thrust)
- 2x 3000L fuel tanks

## Deck Gear

- Bow pulpits with integrated teak seats
- Gangway
- Lewmar port lights
- 1 swim ladder on the skirts
- Hull side ladder in bow
- Winches
- Blocks and jammers
- Genoa manual furler
- Deck light
- Electric lifting system for the dinghy with extendable arms and remote controller
- Hatch at the top of the stairway between cockpit and flybridge
- Fresh water hose retrieval & storage system with spray nozzle in chain locker
- 2 fresh water outlets at the bottom of the mast and in the cockpit
- Main sail electric winch
- 2 primary electric winches
- Bimini on the flybridge (stainless steel)
- 2 additional lights for the flybridge + separate switch
- 4 extra waterproof speakers in the cockpit and flybridge by BOSE
- LEDs on the skirts, cockpit and flybridge

## Steering System

- Rudders constructed of molded sandwich lamination glass/ vinyl ester
- Self-aligning lower and top bearings
- 5 strokes steering wheel (diameter 1000 mm)
- Hydraulic steering system
- 2 emergency tillers

## Electrical Systems

- AC-230V: Main panel extension, 3 chargers (24V/100A), Inverter (24V/5000W), two 230V sockets in cabins, additional sockets in saloon galley
- DC-24V: Main panel extension, Battery monitoring, 12 house batteries (24V/1200Ah), starting batteries
- 110V shore connection kit
- 2x Generator 19KW 220V 50HZ
  - port generator 680 hours (June 2014)
  - starboard generator 627 hours (June 2014)
- 2x 350W Wind Generator (Superwind) Ultra quiet
- 4x solar power 140W (560W Rigid solar panel array with Mastervolt Charge Master)

## Lighting

- Navylec domotic system for lights, controls and D/C system, including lights for ceiling lights
- Interior lighting with LED lamps
- Navigation lights with LED lamps
- 6x underwater lights (Plasma 23,000 Lumens with 30,000 hour life by SEA VISION)

## Navigation & Electronics

- Compass (size 135 mm)
- Chronometer and barometer
- Navigation:
  - Furuno TZ 15 GPS Navigation Plotter Touch Screen (Flybridge)
  - Furuno TZ 15 GPS Navigation Plotter Touch Screen (Saloon)
  - Furuno CH300 85/215HZ Dual Freq Sonar (Flybridge/Saloon)
  - Furuno NAVPILOT 700 Autopilot (Flybridge/Saloon)
  - Furuno F1501 WIND INDICATOR (Flybridge/Saloon)
  - Furuno FI503 TRIDATA (Flybridge/Saloon)
  - Furuno DFF1 DIGITAL FISHFINDER (Flybridge/Saloon)
  - Furuno DRS4D 4KW UHD RADAR DOME 24" (Mast)
  - Furuno FA50 AIS CLASS B TRANSPONDER/RECEIVER (saloon)

- All navigation lighting LED
- KVH FB250 Tracphone Inmarsat Satellite Broadband
- Yacht controller (remote controller for engines, windlass and bow thrusters)
- WiFi extender
- Fishfinder

## Plumbing

- Fresh water: 2x 750L equipped with level indicators, 2 pressurized pumps (GIANNESCHI ECOINOX2 14.5GPM 24V), 2 water heaters of 80L each
- Black water: 2x 137L with discharge system, 2 electric pumps with automatic discharge equipped with 3 way valves (discharge in the sea or holding tanks)
- All renewed bilge pumps:
  - RULE RU12 2000 GPH 24V (port)
  - RULE RU12 2000 GPH 24V (starboard)
  - WHALE WH BP2054 All Shower Sumps (4EA) 5 GPM 24V
  - JABSCO JA34600-0010 10.8GPM 24V Diaphragm Bilge Pump (port engine room)
  - JABSCO JA34600-0010 10.8GPM 24V Diaphragm Bilge Pump (starboard engine room)
- 2 manual bilge pumps
- 2 hand showers on deck
- Watermaker 220L/h – 220V (Sea Recovery Aquawhisper reverse osmosis with 425 hours by June 2014)
- Electric 24V toilets in bathrooms with fresh water flush
- Air conditioning 72 000 BTU (Marine Air MCGVLP 72,000)
  - 2049 hours (June 2014)
  - Plus UV sterilizers in AC air handlers

## Comfort on Board

### Generalities:

- Curtains on all cabin portlights and saloon windows
- Electrically recessed skyscreen blinds in the saloon (manual in the cabins)
- Manually concealed skyscreen on cabin ceiling hatches with anti-mosquito screens
- Stainless steel sliding entrance door

### Electrical Appliances (Siemens):

- Washing machine (Siemens IQ700)
- Condenser Dryer (Siemens IQ700)
- Air conditioning 72 000 BTU (Marine Air MCGVLP 72,000)
  - 2049 hours (June 2014)
  - Plus UV sterilizers in AC air handlers
- 320L built in freezer (Siemens IQ700)
- 320L built in refrigerator (Siemens IQ700)
- Induction cook top with 5 zones (Siemens IQ700)
- Teppan Yaki coop top (Siemens IQ700)
- Dishwasher (Siemens IQ700)
- Microwave with oven function (Siemens IQ700)
- Warming drawer (Siemens IQ700)
- Electric oven (Siemens IQ700)
- Kitchen Chef Cooking machine (Induction mixer/cooker by Kenwood)
- Cooker hood (Siemens IQ700)
- Nespresso Espresso Maker
- Ice maker
- Wine cooler for 32 bottles (Siemens)
- Refrigerator in cockpit
- MODENA SPA bathtub with Hydrotherapy, Chromatherapy, and Ozone Therapy functionality in owner cabin

#### Leisure Items:

- Widescreen LCD TV in saloon (40")
- Hi-Fi Pack: Marantz (saloon)
- LCD TV 20" + DVD/CD player in owner cabin
- Air TV antenna
- Diving Equipment:
  - Brownies upgraded Bauer Capitano compressor Automatic Drains W 100CFM Steel Tank
  - Brownies E-REEL 150ft Electric Third Lunk Hose Reel
  - Brownies CUMBERBELT 3 EA Dive Units for 3 Persons to 70ft
  - Brownies MANIFOLD HP Dive Tank Filling Station for 4 Bottles
- 5 diving bottles holder in cockpit
- Williams 445 DieselJet with 35hours as of June 2014
  - Plus tender fueling system
- 10' inflatable tender with Dihatsu 9HP outboard engine
- Large custom safe
- 600 lbs/ day ice machine (Dometic Eskimo Ice Shave Ice Maker)
- Gas grill

## Finishing

- Furniture and all interior panels made of individually selected wood of category A with polyurethane varnish
- All upholstery and cushions made of synthetic fabric
- Hull, deck and flybridge in white gelcoat
- Front saloon windows with black hatch frames and dark plexi panel
- Box for the Hi-Fi equipment with additional shelves
- Side of hulls painted in gelcoat
- Cockpit, flybridge and skirt floors covered with teak

## Launching

- Copper antifouling
- Launching and setting of the mast
- Name and hailing port inscriptions

## Safety Equipment

- Automatic fire extinguishing system in the engine rooms
- Complete safety equipment pack: 2 life rafts for 8 people, rescue equipment (16 lifejackets, first aid kit, flares, lifebuoy, signal mirror, wooden plugs, flag set, fog horn), set of fire extinguishers
- Satellite tracking system with movement detection and anti-intrusion alarm (excluding fees)
- EPIRB with GPS

## Mooring & Tools

- Windlass 3000W 24V
- CQR anchor 66kg
- Additional anchor 20kg + 20m galvanized chain (diameter 10mm)
- Mooring kit (8 inflatable fenders with neoprene covers + 4 mooring ropes)
- SS Ultra Anchor Bow
- SS Ultra Anchor Stern
- SS safety lines



- Drough with 350' line (2 Ea)
- Sea anchor with 600' line (plus spare high strength 9/16 line 600' for halyards, sheets)
- Safety line with reels

### Spare Parts

- All imaginable spare parts in double such as for engines, generators, fuel and water systems

## Основная информация

---

**Тип судна:** Катамаран

**Подкатегория:** Крейсерская яхта

**Модельный год:** 2012

**Год постройки:** 2012

**Страна:** United States

**Открытая палуба мостика:** Да

## Размеры

---

**Длина общая:** 71' 5" (21.77m)

**Длина по ватерлинии:** 68' 5" (20.85m)

**Ширина:** 34' 0" (10.36m)

**Мин. осадка:** 6' 2" (1.88m)

**Трапы:** 103' 3" (31.47m)

## Скорость, вместимость и масса

---

**Дальность на крейсерской скорости:**  
2000

**Водоизмещение:** 69440 Pounds

**Вместимость воды:** 400 Gallons

**Объем топливного бака:** 1600 Gallons

## Размещение

---

Всего кают: 5

Всего коек: 5

Спальные места: 10

Всего ком. состава: 5

Каюта капитана: Да

Каюты экипажа: 2

Койки экипажа: 2

Спальных мест экипажа: 3

Комм. состав экипажа: 2

## Корпус и палуба

---

Материал корпуса: Composite

Материал палубы: Teak

Комплектация корпуса: Катамаран

Цвет корпуса: Gray

Дизайнер корпуса: Sunreef Yachts

Дизайнер экстерьера: Sunreef Yachts

Дизайнер интерьера: Sunreef Yachts

## Информация о двигателе

---

Двигатели: 2

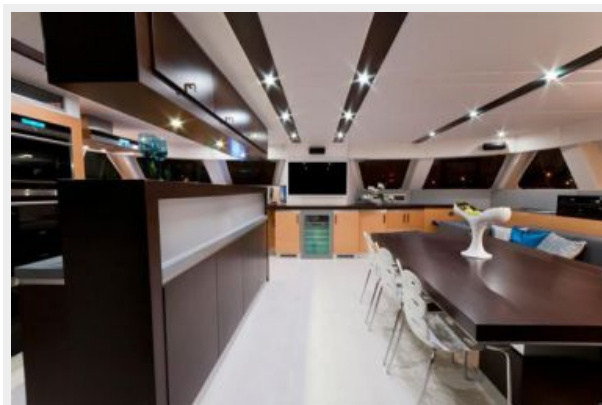
Производитель: Yanmar

Модель: 6BY2-260

Тип двигателя: Inboard

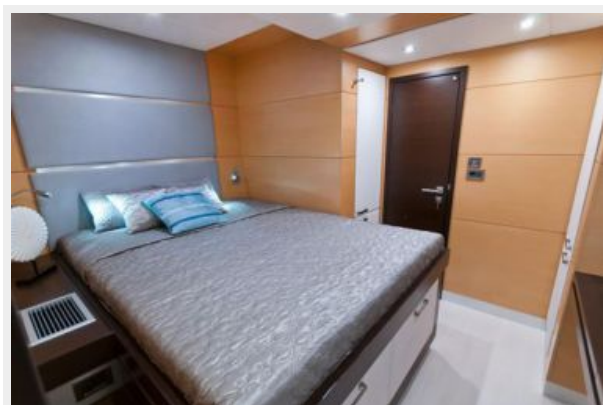
Тип топлива: Diesel

# ФОТОГРАФИИ









# КОНТАКТЫ

---

Андрей Шестаков (Andrey Shestakov) – ведущий яхтенный брокер отдела продаж яхт и судов компании Shestakov Yacht Sales Inc. Официальный представитель Shestakov Yacht Sales Inc. для русскоговорящих клиентов в центральном офисе компании в Майами/Форт Лодердейл/Флорида/США.

## Контактная информация

---

Email: [andrey@shestakovyachtsales.com](mailto:andrey@shestakovyachtsales.com)

Web: [shestakovyachtsales.com](http://shestakovyachtsales.com)

## Телефоны

---

Краснодарский край: **+7(918)465-66-44**

США, Майами, Флорида: **+1(954)274-4435**

## Время работы

---

Понедельник – Суббота: **9:00 - 21:00**  
EDT

Воскресенье: **Закрето**

## Адрес

---



Harbour Towne Marina, 850 NE 3rd St,  
STE 213, Dania, FL 33004