

LADY SARAH — BURGER



Судостроитель: BURGER

Год постройки: 2001

Модель: Моторная яхта

Цена: **ЦЕНА ЯХТЫ ПО ЗАПРОСУ**

Местонахождение: United States

Длина общая: 85' 0" (25.91m)

Ширина: 20' 6" (6.25m)

Макс. осадка: 5' 6" (1.68m)

Крейс. скорость: 18 Kts. (21 MPH)

Макс. скорость: 22 Kts. (25 MPH)

Купить Lady Sarah — BURGER а также выбрать подходящую вам яхту из нашего каталога яхт вам поможет опытный яхтенный брокер Андрей Шестаков. На сегодняшний день компания Shestakov Yacht Sales Inc. имеет большое количество яхт в собственном списке продаж, а также тесно сотрудничает со всеми крупными яхтенными производителями по всему миру.

Для того чтобы купить яхту Lady Sarah — BURGER а также проконсультироваться по любому вопросу связанному с покупкой, продажей, чартером яхт позвоните по телефону **+7(918)465-66-44**.

ОГЛАВЛЕНИЕ

ОГЛАВЛЕНИЕ	2
ХАРАКТЕРИСТИКИ	5
Основная информация	5
Размеры	5
Скорость, вместимость и масса	5
Размещение	5
Корпус и палуба	6
Информация о двигателе	6
ПОДРОБНОЕ ОПИСАНИЕ	7
Overview	7
Accommodations	7
Main Deck	7
Pilothouse	8
Flybridge	8
Galley	9
Main Salon	9
Aft Deck	9
Engine Room	9
Electrical Equipment	10
Mechanical Equipment	10
Deck & Hull	10
2011 Electronic Upgrades	10
Significant Upgrades in 2011	11
Exclusions	11
Remarks	12
Исключения	12
Отказ от ответственности	12
ФОТОГРАФИИ	13

Main Salon long view forward	13
Main Salon lounge seating	13
Main Salon	13
Dining Salon Buffet	13
Dining Table	13
Salon Entertainment Center	13
Galley	14
Lower Helm console	14
Pilothouse Console	14
Pilothouse Seating	14
Lower Companionway	14
Master Stateroom flatscreen TV	14
Master Stateroom King	15
Master Head & Shower	15
Master Stateroom ensuite head	15
Forward Stateroom	15
VIP Stateroom	15
Flybridge Helm	15
Flybridge Seating and Boat Deck	16
Flybridge Settee	16
Flybridge Storage-Port Side	16
Icemaker and Fridge	16
Aft Deck Dining	16
Aft Deck	16
LADY SARAH Bow Quarter	17
КОНТАКТЫ	18
Контактная информация	18
Телефоны	18
Время работы	18

Адрес

18

ХАРАКТЕРИСТИКИ

Основная информация

Тип судна: Моторная яхта

Подкатегория: Flushdeck

Модельный год: 2001

Год постройки: 2001

Страна: United States

Верх: 2363

Открытая палуба мостика: Да

Размеры

Длина общая: 85' 0" (25.91m)

Ширина: 20' 6" (6.25m)

Макс. осадка: 5' 6" (1.68m)

Скорость, вместимость и масса

Крейс. скорость: 18 Kts. (21 MPH)

Крейсерская скорость поворота: 2000 Kts.

Макс. скорость: 22 Kts. (25 MPH)

Вместимость воды: 800 Gallons

Объем топливного бака: 5050 Gallons

Размещение

Всего кают: 4

Корпус и палуба

Материал корпуса: Aluminum

Дизайнер экстерьера: Don
O'Keeffe/Burger Design Team

Дизайнер интерьера: Owner/Douglas
Richey, A.S.I.D./Burger Design Team

Информация о двигателе

Производитель: Caterpillar

Тип топлива: Diesel

ПОДРОБНОЕ ОПИСАНИЕ

Overview

Custom built and continuing the longstanding ethic of the Burger Boat Company, **LADY SARAH** is unique and masterfully built. The interior can be described as classic contemporary with traditional accents. Large salon windows and incredible headroom throughout highlight the richly crafted *Makoré* (African Cherry) woodwork. A separate and secluded master suite amidship is comparable in size to those on 100 to 120 foot yachts with amenities to match. Three additional staterooms are forward while the on-deck day head, opposite the dining salon, is totally elegant and features rare *Rojo Corlito* marble counter top and floor tiles.

Accommodations

LADY SARAH offers three, nice sized double staterooms and a fourth cabin with upper/lower berths and ensuite head which can be used as a separate crew cabin or extra guest cabin. The full beam master suite is located amidship on the lower level, accessed via a private stairway from the main salon. There is a centerline king sized berth flanked by bedside cabinets and reading lamps. Facing the berth is the built-in entertainment center including a new 55" Samsung HD TV, DVD, CD, CVR, and surround sound amplifier. His and hers, cedar lined, walk-in closets are aft to port and starboard with built-in bureaus forward for abundant storage. Forward is the full width head and a large marble lined shower with Kohler's multi-head shower array and steam room feature. His and hers, under mounted sinks and marble counter tops have plenty of additional storage beneath. A separate, stacked washer and dryer is built into a laundry cabinet in the master head. The two guest staterooms as well as the crew stateroom are accessed by stairway from the pilothouse staterooms located forward, each with private baths. The forward stateroom has a centerline queen berth with a leather upholstered headboard. Aft to port is a marble lined head with shower. To starboard is a cedar lined hanging locker. Aft to starboard is the VIP guest cabin, also with a queen bed, hanging locker, and marble lined head with shower. Opposite to port is the crew stateroom furnished with upper and lower berths, hanging closet, and marble lined head with shower. All staterooms are furnished with new Insignia flat screen TV's as well as with stereo speakers and signal integration from the vessel's main entertainment center. There are phone sets in each stateroom as well as throughout the vessel utilizing the Panasonic Digital Hybrid system which integrates land lines, cell, sat-phone, and intercom functions. In the foyer area between the staterooms is a laundry station with stacked Bosch washer & dryer.

Main Deck

The main deck features full walk-around, teak laid side decks from bow to stern. The foredeck provides ample working area for docking and anchoring. There is a bow roller with an easily

deployed stainless steel Bruce anchor. A bow seat is built into the forward end of the trunk cabin with storage beneath the seats. Additional cuddy storage behind the bow seat can be accessed from the port or starboard side decks with ample room for fenders, lines, ladders, and cleaning equipment.

Pilothouse

The forward pilothouse is accessed by sliding doors to port and starboard. There is excellent visibility through five, flat panel tempered glass windows forward, each with windshield washers and wipers. Large slide windows and windows in the sliding doors enhance visibility as well.

There is a single, Stidd adjustable chair at the helm and an L-shaped bench seat aft with a pedestal mounted table in front. The pilothouse sole is teal with ebony seams. The helm console has been recently updated with new, glass bridge technology featuring five multi-function display monitors. There is also a new 25,000-watt radar in addition to new, color function Caterpillar main engine systems monitors. **Pilothouse Electronics:**

(3) KEP 17" glass bridge multi-function monitors C-Plath Navipilot V autopilot Furuno 25,000-watt radar Furuno video depth recorder FCV582L Furuno Navtek receiver Sea 857 loud hailer Sea 157 VHF radio Nera Inmarsat SAT phone Caterpillar engine vision monitors Elbex closed circuit camera monitor (engine room & aft deck cameras) Koopnautic stabilizers Quantum bow thruster Kobelt single lever engine controls Danforth 6" compass B&G Hydra multi-function Burger BASICS vessel systems monitor Burger AMPS power management system Harwich clock & barometer

Flybridge

The flybridge stairway is on the starboard side of the pilothouse, protected by a one-piece, watertight sliding hatch. There is an adjustable Stidd chair at the centerline helm with a built-in bench seat to port. Port and starboard wing stations have full controls for gears, throttles, bow thruster, and jog steering with rudder angle indicators. Two panel "glass bridge" display monitors added 2011. Aft of the flybridge helm area to starboard is a TEK infrared gas grill flanked by storage cabinets and a flush mounted sink. Two non-corrosive gas canisters are stored in cabinets with solenoid equipped leak protection system. Opposite to port is a matching cabinet housing a Sub Zero refrigerator and Hoshizaki high capacity ice maker. Aft on both sides are matching L-shaped bench seats with storage beneath and pedestal mounted Corian topped tables at each corner. A walk-through between the bench seats leads to the boat deck area.

Flybridge Electronics: (2) KEP 15" glass bridge multi-function monitors Furuno 72-mile radar C-Plath autopilot controls B&G multi-function display (speed, depth, wind) Caterpillar engine Vision monitors Standard Horizon Spectrum VHF radio Kobelt single lever engine controls Bow thruster controls Danforth 5" compass Panasonic cordless phone set New Fusion AM/FM iPod dock music center

Galley

Next aft from the pilothouse is the U-shaped galley with biscuit tone granite countertops and abundant storage above and below. There is a large window outboard to port, above the sink. Overhead halogen lighting as well as under counter lights highlight the galley. Opposite to port from the galley is the day head which also has a large window outboard with privacy curtains. The day head is exceptionally spacious and features marble counter top with matching, marble tile flooring. **Galley Appliances:** Gaggenau 4-burner glass top range Gaggenau convection oven KitchenAid microwave/convection oven KitchenAid trash compactor Sub Zero refrigerator Sub Zero freezer drawer Bosch dishwasher Double stainless steel sink Instahot water dispenser Soap dispenser Overhead stereo speakers Overhead halogen lighting Panasonic phone set Central vacuum system

Main Salon

Aft from the galley the main salon opens up to a large and welcoming expanse of beautiful woodwork and custom built furnishings. Large windows along both sides and across the aft bulkhead provide terrific viewing while underway and allow for maximum natural light. There are wrap-around valence treatments concealing drop down touch pad controlled Silhouette shades for all windows, ensuring privacy and sun protection as desired. The salon headliner was recently replaced and fitted with new Xenon recessed lighting also controlled by new touch-pad technology. Forward to port, in the main salon, is the custom *Makoré* dining table with exquisite woodwork inlay. Six matching chairs comfortably surround the round table. Opposite to starboard is the built-in wet bar with marble counter tops and an under mounted, black enamel sink. Built-in below are storage lockers, a wine cooler, and a Hoshizaki ice maker. Aft in the main salon is a lounge area with an upholstered sofa, leather arm chair, and a custom built coffee table. To port, aft of the stairway to the owners' suite is the built-in entertainment center housing the vessel's primary audio and video equipment including a large Samsung 46" HD flat screen monitor that lowers out of sight when not in use. **Entertainment Equipment:** Samsung 46" flat screen HD TV Samsung 55" flat screen HD TV (3) Insignia 20" flat screen TV's Surround sound speaker system

Aft Deck

The aft deck offers al fresco dining at a pedestal mounted table with a built-in bench seat aft and pull up chairs. There is a single door in the aft bulkhead for access to the main salon. A gate in the transom railing to starboard provides access to the swim platform. There are boarding gates to port and starboard from the aft deck, as well as from the side decks midship.

Engine Room

The engine room is sound insulated and accessed from the swim platform through a watertight

bulkhead and also from the inside of the vessel opposite the master stateroom, through a watertight bulkhead door. The engine room is full width with full, stand-up headroom. As with most Burgers, the engine room is a stunning exhibit of engineering at its best. All equipment and valves are labeled in proper marine fashion. The entire engine room was updated to today's standard including substantial structural strengthening to the main water tank baffle system and a new, larger access door installed on top of the water tank. In 2011, two new Caterpillar C-32 engine were installed including all new control systems and engine systems monitors. Engine hours are approximately 550. The main engines are protected by Caterpillar's transferable Platinum Warranty. Performance data as follows: 10 knots - 24 gph 15 knots - 108 gph 19.5 - 20 knots - 78% load, 125 gph Top speed - 23.8 knots

Electrical Equipment

12V & 24V DC systems 120 & 240V AC systems AC & DC lighting throughout 12V & 24V automatic battery chargers 12V & 24V gel cell battery banks (2) Glendinning shore power cable reels (2) 100-amp 3-phase shore power cables (2) Kilo-Pak 38 kW generators Atlas Energy Systems 40 KVA frequency converter

Mechanical Equipment

ZF Marine ZF 2550V transmissions MarineAir chilled water reverse cycle air conditioning Koopnautic 2030 stabilizers Quantum QT 30 bow thruster Alfa Laval fuel scrubbing centrifuge system Racor fuel filters Matrix 1200 gpd water maker Headhunter Royal Flush marine toilets Headhunter Red Fox waste treatment system (2) Mach-V fresh water pumps, 2011 (2) Stainless steel hot water heaters, 2011 Nautical Structures EZ-2500 EX davits/crane Closed circuit TV system Built-in security system Built-in oil changing system Engine room tool boxes Engine room work bench Engine room sink Constant circulation hot water system New built-in custom storage rack system New Spot Zero water filter system, 2011

Deck & Hull

Nautica 18' tender Yamaha 4-stroke outboard Switlik 12-man life raft in canister (2) Stidd helm chairs Flybridge TEK Infrared grill Flybridge Hoshizaki ice maker Flybridge refrigerator Flybridge aluminum fixed hardtop Custom aluminum radar/antenna mast Carlisle and Finch remote controlled search light Hydraulic powered anchor windlass (2) Electric aft deck capstans Swim platform Swim ladder Aft deck H&C shower Side mount boarding ladder Tide Ride boarding ladder Teak decks Awlgrip paint

2011 Electronic Upgrades

(3) Glass Bridge KEP 17" Marine Display LCD monitors w/picture PIP and picture by picture PBP

capability (2) Glass Bridge KEP 15" Marine Display LCD Sunlight readabel monitors w/PIP, PBP capability (1) KEP Bridge Display LCD 5.6" diagonal touch-screen (1) KEP Levathan Athlon I X2 dual core computer (1) WxWork On Water Premium software (1) Nobeltec Admiral Plus (11) Nobeltec Mega Wide Chart NA P007 & P008 (1) Extron Matrix switcher, scaler, and rack shelf (1) Furuno NavNet 3D Blackbox MFD chart plotter (1) Furuno DFF1 sounder (1) Furuno 235DHT SmartDucer (1) Furuno BBWGPS WAAS receiver (1) Furuno BBWX2 satellite weather (Sirius weather and Radio receiver) (1) Furuno 6' Open Array (1) Furuno NavNet 3D digital UHD radar, 25 kW (1) Furuno black box AIS transponder (1) Furuno PB150 Ultrasonic Wx Station (wind, barometer, and air temperature device) (1) Furuno SC30 satellite compass (2) Furuno RD-33 remote displays 4.3" sunlight viewable color LCD (2) ICOM M504 VHF radios (4) Comrad VHF 8' antenna (1) KVH TracVision HD7 Sat antenna (1) KVH dome and baseplate (2) DirecTV HD DBR receivers with remotes (1) Elbex EXS 128 8-channel fixed/motorized camera switcher/controller (1) Shakespeare SeaWatch 14" marine TV antenna (1) Shakespeare SeaWatch TV/AM/FM splitter (1) Digital antenna wireless cell repeater (1) Digital 4' dual band cell antenna (1) Wave WiFi ethernet converter (1) Zyxel 802.1 WLAN access point (1) Digital 814 WLW 4' WiFi 52.1 Ghz antenna (2) Harmony remote RF extender (1) Sanus slim mount TV bracket (1) Fusion FM 401 2-Channel 399W Marine amplifier (2) Fusion MS-SW10 10" marine subwoofers (1) Fusion MS-iPod dock (1) Fusion FUS MS WR600C remote control (3) Pairs Speakercraft MT6 Three Speakers (1) Pair Speakercraft Accufit Ultra Slim One Speakers Polk Audio TC80i

Significant Upgrades in 2011

New Caterpillar C-32 main engines Rebuilt both Kilopak 38 kW generators Rebuilt and updated Atlas Shore Power Management system Rebuilt and updated Ship's AC/DC main distribution panel Replaced fresh water pumps with high capacity Mach V pumps Replaced (2) hot water heaters with stainless steel jacketed hot water heaters Added Spot Zero Domestic water filter system Added new custom built aluminum 'box shelf' storage system in engine room Replaced shore power manual cable reels with (2) electric Glendinning reels Replaced all 5 TV's throughout vessel Added 'touch pad' technology to lighting and salon Silhouette shade systems Updated Pilothouse and Flybridge monitors with (6) new 'glass bridge' displays Replaced radar with new 25,000 watt Furuno radar Replaced engine monitors with new Color Cat displays Rebuilt aft water tank and added new heavy duty baffle sections Replaced Flybridge grill with TEK Infrared grill and new fuel supply (gas) systems Added (2) new Hoshizaki ice makers (Flybridge & Main Salon) Updated stereo sound system on Flybridge Replaced Flybridge cushions and covers Replaced main salon headliner and added all new Xenon lighting systems Replaced dining table with new custom built table

Exclusions

Artwork (2) Lamps in main salon Engraved ship's bell Name boards Monogrammed towels Charts, guide books, log books Owner's personal effects

Remarks

LADY SARAH is a "ten" in both condition and overall design and engineering. Thanks to a professional, full-time crew and the owner's experience in private aircraft management, the **LADY SARAH** is ready to go at all times. Now seriously for sale here is a combination of a great boat at a great price.

Исключения

При продаже яхты исключаются личные вещи владельца.

Отказ от ответственности

Компания предоставляет описание судна или яхты добросовестно, но не может гарантировать точность этой информации, а также не ручается за техническое состояние. Покупатель должен проинструктировать своих агентов или оценщиков исследовать представленную информацию более подробно, по собственному желанию. Продажа судна или яхты, изменение цены или снятие с продажи будет происходить без предварительного уведомления.

ФОТОГРАФИИ

Main Salon long view forward



Main Salon lounge seating



Main Salon



Dining Salon Buffet



Dining Table



Salon Entertainment Center



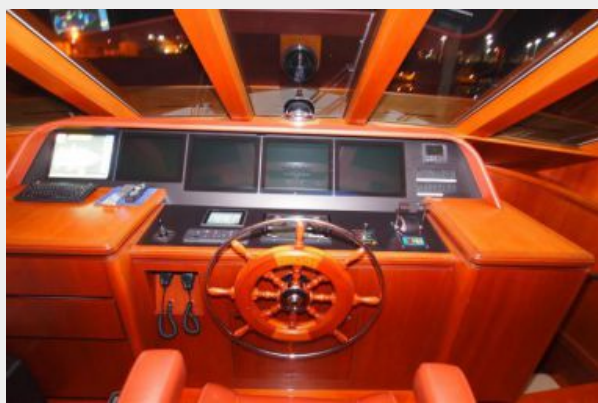
Galley



Lower Helm console



Pilothouse Console



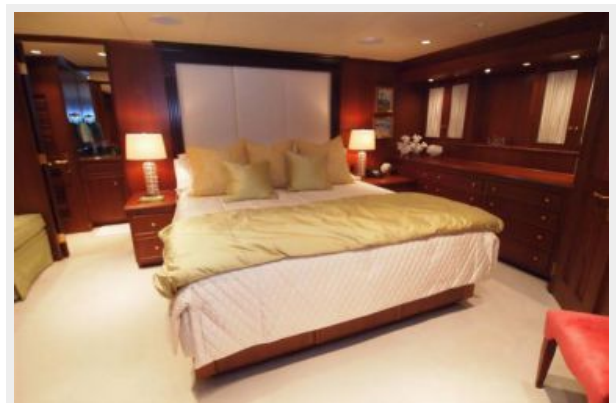
Pilothouse Seating



Lower Companionway



Master Stateroom flatscreen TV



Master Stateroom King



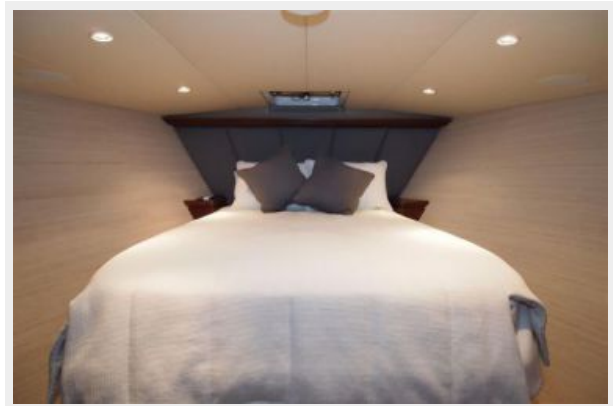
Master Head & Shower



Master Stateroom ensuite head



Forward Stateroom



VIP Stateroom



Flybridge Helm



Flybridge Seating and Boat Deck



Flybridge Settee



Flybridge Storage-Port Side



Icemaker and Fridge



Aft Deck Dining



Aft Deck



LADY SARAH Bow Quarter



КОНТАКТЫ

Андрей Шестаков (Andrey Shestakov) – ведущий яхтенный брокер отдела продаж яхт и судов компании Shestakov Yacht Sales Inc. Официальный представитель Shestakov Yacht Sales Inc. для русскоговорящих клиентов в центральном офисе компании в Майами/Форт Лодердейл/Флорида/США.

Контактная информация

Email: andrey@shestakovyachtsales.com

Web: shestakovyachtsales.com

Телефоны

Краснодарский край: **+7(918)465-66-44**

США, Майами, Флорида: **+1(954)274-4435**

Время работы

Понедельник – Суббота: **9:00 - 21:00**
EDT

Воскресенье: **Закрито**

Адрес



Harbour Towne Marina, 850 NE 3rd St,
STE 213, Dania, FL 33004