

REEL ESTATE — HATTERAS



Builder: HATTERAS

Year Built: 1980

Model: Motor Yacht

Price: PRICE ON APPLICATION

Location: United States

LOA: 64' 0" (19.51m)

Beam: 18' 4" (5.59m)

Min Draft: 5' 0" (1.52m)

Max Draft: 5' 0" (1.52m)

Cruise Speed: 8 Kts. (9 MPH)

Max Speed: 19 Kts. (22 MPH)

Our experienced yacht broker, Andrey Shestakov, will help you choose and buy a yacht that best suits your needs **Reel Estate — HATTERAS** from our catalogue. Presently, at Shestakov Yacht Sales Inc., we have a wide variety of yachts available on our sale's list. We also work in close contact with all the big yacht manufacturers from all over the world.

If you would like to buy a yacht **Reel Estate — HATTERAS** or would like help answering any questions concerning purchasing, selling or chartering a yacht, please call **+1(954)274-4435**

TABLE OF CONTENTS

TABLE OF CONTENTS	2
SPECIFICATIONS	7
Overview	7
Basic Information	7
Dimensions	7
Speed, Capacities and Weight	8
Accommodations	8
Hull and Deck Information	8
Engine Information	8
DETAILED INFORMATION	9
64' Hatteras Overview	9
64' Hatteras Vessel Walkthrough	9
64' Hatteras Accommodations	9
64' Hatteras Salon	9
64' Hatteras Galley	10
64' Hatteras Dining	10
64' Hatteras Master Stateroom	10
64' Hatteras Aft Guest Staterooms	10
64' Hatteras Forward Guest Stateroom	10
64' Hatteras Laundry	11
64' Hatteras Pilothouse	11
64' Hatteras Flybridge	11
64' Hatteras Aftdeck	11
64' Hatteras Audio/Visual Equipment	11
64' Hatteras Electronics	12
64' Hatteras Electrical System	12
64' Hatteras Engine/Mechanical Equipment	13
64' Hatteras Deck Equipment	14

64' Hatteras Tender	14
64' Hatteras Safety & Fire Protection	15
64' Hatteras Exclusions	15
64' Hatteras Disclaimer	15
Exclusions	15
Disclaimer	15
PHOTOS	17
64' Hatteras starboard profile	17
64' Hatteras port forward profile	17
64' Hatteras port aft profile	17
64' Hatteras starboard aft profile	17
64' Hatteras anchor windlass	18
64' Hatteras forward profile	18
64' Hatteras foredeck	18
64' Hatteras foredeck aft	18
64' Hatteras port side deck photo1	19
64' Hatteras foredeck benchseat	19
64' Hatteras port side deck photo2	19
64' Hatteras starboard side deck photo1	19
64' Hatteras starboard side deck photo2	20
64' Hatteras flybridge forward	20
64' Hatteras flybridge aft	20
64' Hatteras flybridge helm photo1	20
64' Hatteras flybridge helm photo2	20
64' Hatteras flybridge helm electronics	20
64' Hatteras flybridge helmseats	21
64' Hatteras flybridge port seating	21
64' Hatteras flybridge BBQ grill	21
64' Hatteras flybridge starboard seating	21

64' Hatteras tender photo2	22
64' Hatteras tender photo1	22
64' Hatteras tender davit	22
64' Hatteras aftdeck photo1	22
64' Hatteras aftdeck photo2	23
64' Hatteras aftdeck forward	23
64' Hatteras aftdeck port	23
64' Hatteras aftdeck starboard	23
64' Hatteras swimplatform	23
64' Hatteras salon forward	23
64' Hatteras salon aft	24
64' Hatteras salon port	24
64' Hatteras salon port aft	24
64' Hatteras salon starboard	24
64' Hatteras galley	24
64' Hatteras galley forward	24
64' Hatteras galley aft	25
64' Hatteras galley starboard	25
64' Hatteras pilothouse forward	25
64' Hatteras pilothouse aft	25
64' Hatteras pilothouse port	25
64' Hatteras pilothouse starboard	25
64' Hatteras pilothouse helm photo1	26
64' Hatteras pilothouse helm photo2	26
64' Hatteras pilothouse-flybridge stairs	26
64' Hatteras master stateroom	26
64' Hatteras master stateroom port	26
64' Hatteras master stateorom starboard	26
64' Hatteras master stateroom head	27

64' Hatteras master stateroom tub-shower	27
64' Hatteras port guest stateroom	27
64' Hatteras starboard guest stateroom	27
64' Hatteras guest head	28
64' Hatteras forward guest stateroom	28
64' Hatteras forward guest stateroom aft	28
64' Hatteras forward guest stateroom port	28
64' Hatteras forward guest stateroom head photo1	29
64' Hatteras forward guest stateroom starboard	29
64' Hatteras forward guest stateroom head photo2	29
64' Hatteras forward guest stateroom shower	29
64' Hatteras washer-dryer	30
64' Hatteras engine room forward	30
64' Hatteras engine room aft	30
64' Hatteras engine room port	30
64' Hatteras engine room starboard	30
64' Hatteras port main engine	30
64' Hatteras port main engine exhaust	31
64' Hatteras starboard main engine	31
64' Hatteras fuel manifold	31
64' Hatteras Racor fuel filters	31
64' Hatteras stabilizer system	31
64' Hatteras electrical panel	31
64' Hatteras battery charger2	32
64' Hatteras battery charger1	32
64' Hatteras battery charger3	32
64' Hatteras battery switches	32
64' Hatteras port generator sound box	33
64' Hatteras port generator	33

64' Hatteras starboard generator	33
64' Hatteras port generator	33
CONTACTS	34
Contact details	34
Telephones	34
Office hours	34
Address	34

SPECIFICATIONS

Overview

Reel Estate (ex. Aku Aku III) is an extremely well-maintained and upgraded 64' Hatteras offering a 4 stateroom 3 head layout, new Lugger main engines, recent exterior paint, stabilizers, bowthruster, updated electronics and numerous other upgrades. Over \$1 million has been spent on Reel Estate during this seller's ownership and it shows. Her massive engine room is very impressive, as are her covered side decks, huge flybridge, full beam master stateroom and the overall condition of the yacht. Even the pilothouse to flybridge internal stairs have been customized to allow a more comfortable angle. Reel Estate is one of those rare yachts you have to see in person to really appreciate her true condition and what investment the seller has made in her. Despite all of this, her asking price is very realistic and competitive. Reel Estate is truly a turn-key yacht. Price reduced!

Basic Information

Category: Motor Yacht

Sub Category: Long Range Cruiser

Model Year: 1980

Year Built: 1980

Country: United States

Vessel Top: Radar Arch and Bimini

Fly Bridge: Yes

Dimensions

LOA: 64' 0" (19.51m)

LWL: 62' 10" (19.15m)

Beam: 18' 4" (5.59m)

Min Draft: 5' 0" (1.52m)

Max Draft: 5' 0" (1.52m)

Clearance: 24' 6" (7.47m)

Speed, Capacities and Weight

Cruise Speed: 8 Kts. (9 MPH)

Max Speed: 19 Kts. (22 MPH)

Displacement: 10000 Pounds

Water Capacity: 550 Gallons

Holding Tank: 250 Gallons

Fuel Capacity: 1400 Gallons

Accommodations

Total Cabins: 4

Total Heads: 3

Hull and Deck Information

Hull Material: Fiberglass

Deck Material: Composite Fiberglass

Hull Configuration: Modified V-Hull

Hull Color: White

Hull Finish: Fiberglass

Engine Information

Engines: 2

Manufacturer: Luger

Model: 6140 600hp

Engine Type: Inboard

Fuel Type: Diesel

DETAILED INFORMATION

64' Hatteras Overview

Reel Estate (ex. Aku Aku III) is an extremely well-maintained and upgraded 64' Hatteras offering a 4 stateroom 3 head layout, new Lugger main engines, recent exterior paint, stabilizers, bowthruster, updated electronics and numerous other upgrades. Over \$1 million has been spent on Reel Estate during this seller's ownership and it shows. Her massive engine room is very impressive, as are her covered side decks, huge flybridge, full beam master stateroom and the overall condition of the yacht. Even the pilothouse to flybridge internal stairs have been customized to allow a more comfortable angle. Reel Estate is one of those rare yachts you have to see in person to really appreciate her true condition and what investment the seller has made in her. Despite all of this, her asking price is very realistic and competitive. Reel Estate is truly a turn-key yacht. Price reduced!

64' Hatteras Vessel Walkthrough

Entering the salon through the double teak & glass doors from the covered aftdeck, you will find the entertainment center starboard aft, sofa with custom hi/lo folding teak table to starboard, a sofa forward and lounge chairs and ottomans to port. Port forward is the stairwell to the guest staterooms, where you will find the full beam master stateroom forward and then matching guest staterooms aft. Back in the salon, walk forward into the galley and then into the pilothouse. There are side deck access doors on each side, customized internal ladder to the flybridge and then stairs to the forward stateroom that can serve as a guest stateroom or crew cabin. The full-height engine room is access via a door on the port side deck aft.

64' Hatteras Accommodations

Reel Estate offers a full beam master stateroom amidships with a centerline queen size berth and ensuite head, two matching guest staterooms aft with side by side single berths and a stateroom forward with offset single berths and ensuite head that can serve as a stateroom or crew cabin.

64' Hatteras Salon

The salon offers book shelves port aft, stressless chairs and ottomans with custom Scopinich tables to port, stairs to the guest stateroom port forward, a sofa forward, companionway to the galley and pilothouse starboard forward, a sofa with custom Scopinich hi/lo folding teak table to starboard, entertainment center starboard aft, double teak & glass doors aft, opening side windows with screens, PlasTeak vinyl teak & holly sole, tinted windows and custom drapes.

64' Hatteras Galley

The galley is located on the main deck between the salon and pilothouse.

- Kitchenaid 4-burner, electric, ceramic cooktop and oven
- GE Profile convection/microwave oven
- Kitchenaid stainless steel refrigerator/freezer with water dispenser in the door
- Corian countertop with molded sink
- Opening side windows with screens
- Solaire infrared stainless steel BBQ grill on the flybridge
- Manitowoc ice maker in the aftdeck
- Scottsman refrigerator/freezer in the aftdeck

64' Hatteras Dining

Dining space is available at the salon hi/lo table, the aftdeck hi/lo tables and the flybridge tables.

64' Hatteras Master Stateroom

The full beam master stateroom is amidships and offers a centerline queen size berth, nightstands, reading lights, 2 large portlights, 2 hanging lockers, storage drawers and cabinets, custom drapes, PlasTeak vinyl teak & holly sole, fan and an ensuite head with tub/shower.

64' Hatteras Aft Guest Staterooms

Each aft stateroom offers side by side single berths, nightstand, reading lights, 2 portlights, PlasTeak vinyl teak & holly sole, fan, hanging locker, storage drawers and cabinets and shelves. The starboard aft stateroom has direct access to the guest head.

64' Hatteras Forward Guest Stateroom

The forward guest stateroom could also be used as a crew cabin, since it is so separate from the other staterooms. It offers offset single berths to port, a built-in benchseat to starboard, PlasTeak vinyl teak & holly sole, overhead hatch, reading lights, full length mirror, shelves, 2 hanging lockers, 2 portlights and an ensuite head with enclosed shower.

64' Hatteras Laundry

- Bosch Axxis dryer (2004)
- GE washer (2012)

64' Hatteras Pilothouse

The pilothouse offers same level access to the galley and salon and has side deck access doors on each side, a full helm forward, benchseat with custom storage drawers aft and customized internal ladder to the flybridge.

64' Hatteras Flybridge

The flybridge offers a bimini fore and aft of the Radar arch, EZ2CY enclosure forward and on the sides, full helm with storage underneath forward, L-shaped seating with storage underneath on each side, custom Scopinich tables, Pompanette helm seats, non-skid deck, 2 freezers and a stainless steel Solaire BBQ grill. The ladder from the pilothouse to the flybridge has been customized to offer a much better angle.

64' Hatteras Aftdeck

The air conditioned and enclosed aftdeck offers wing doors to each side deck, double teak & glass doors to the salon, Eisenglass enclosure aft, opening side windows, wrap-around benchseats each side, custom Scopinich tables, transom gate to the custom swimplatform stairs, storage cabinet starboard forward, Manitowoc ice machine, Scottsman refrigerator/freezer, Insignia flat screen TV and fresh water washdown on the swimplatform.

64' Hatteras Audio/Visual Equipment

- KVH satellite TV system
- Samsung flat screen TV in the salon
- Sony SLV-D370P DVD/VCR player in the salon
- Sony STR-K750P AM/FM Stereo receiver in the salon
- Sony DVP-NC800H CD/DVD player in the salon
- Sony speakers in the salon
- Insignia flat screen TV in the aftdeck

-
- Panasonic flat screen TV in the master stateroom
 - Samsung VCR/DVD player in the master stateroom
 - Panasonic flat screen TV in the forward guest stateroom

64' Hatteras Electronics

- Furuno Navnet MFD in the pilothouse and on the flybridge
- Northstar 961XD in the pilothouse and on the flybridge
- Garmin 4212 MFD on the flybridge
- SEA 157 VHF in the pilothouse and on the flybridge
- Channel Vision security camera system with an Accelelevision monitor in the pilothouse
- Ritchie magnetic compass in the pilothouse and on the flybridge
- Raymarine ST60 wind gauge in the pilothouse and on the flybridge
- Raymarine ST60+ Tridata gauge on the flybridge
- Raytheon Ray350 loudhailer in the pilothouse
- Furuno RD-30 navigational organizer system in the pilothouse and on the flybridge
- Simrad AP20 autopilot in the pilothouse and on the flybridge
- International Offshore Datamarine depth sounder in the pilothouse
- Phone-Com intercom system
- Weems & Plath clock in the forward guest stateroom
- West Marine clock in the aftdeck

64' Hatteras Electrical System

- Twin Northern Lights 20 kW generators (2165 hours - port (installed 2004), 2039 hours - starboard)
- Dolphin 24vac 100 amp battery charger
- Charles Industries C-Charger battery charger

- ProMariner ProTech 1220i battery charger
- Guest battery switches
- 50 amp shore cord
- Shore power connections fore and aft

64' Hatteras Engine/Mechanical Equipment

The aft engine room is accessed via a port side deck door and offers full standing room throughout and a large workbench aft. the yacht was hauled and the bottom painted in October 2013.

- Twin Luger 6140 600 hp main engines (2036 hours - port, 2035 hours - stbd) (Engines, gearboxes and v-drives installed in 2007)
- Twin Disc gearboxes (2007)
- Walter V-drives (2007)
- D'Angelo and Soundown exhaust system
- Dripless shaft seals
- Glendinning engine controls
- Glendinning engine synchronizer
- VDO and Isspro gauges
- Fuel manifold
- Dual Racor 75/1000Max fuel filters with vacuum gauge for each main engine
- Racor 500FG fuel filter for each generator
- Flo Scan fuel monitoring system
- Perko sea strainers
- Pyrometers
- Naiad 254 stabilizer system with Multisea II controls
- Wesmar bowthruster
- Bennett trim tabs

-
- Cruisair reverse cycle air conditioning/heating system (8 zones)
 - Honeywell heating system
 - Galley Maid heads
 - Spare props

64' Hatteras Deck Equipment

- Plath anchor windlass
- CQR 75lb anchor
- Ideal capstan on the aftdeck
- Foredeck storage boxes
- Foredeck benchseat
- Non-skid decks
- Exterior paint in very good condition
- Stainless steel fender racks on the foredeck
- Teak cap rails on stainless steel stanchions
- Windscreen cover
- 2 boarding gates on each side deck
- Fresh water washdown on the swimplatform
- Custom stairs from the aftdeck to the swimplatform
- Marquipt tide-Ride gangway
- Marquipt aluminum swim/boarding ladder

64' Hatteras Tender

- Nautica 17' wide body RIB with Lenco trim tabs, Garmin 545s chart plotter and Standard Horizon Quest VHF
- Yamaha 90hp outboard

- Quick Lift 2500lb davit

64' Hatteras Safety & Fire Protection

- Kidde engine room fire suppression system
- Carlisle and Finch searchlight
- Smoke detectors
- Fire extinguishers

64' Hatteras Exclusions

- Sellers' personal belongings
- Rug in salon
- Artwork
- Lamps in salon
- Kayaks
- Tools

64' Hatteras Disclaimer

The Company offers the details of this vessel in good faith but cannot guarantee or warrant the accuracy of this information nor warrant the condition of the vessel. A buyer should instruct his agents, or his surveyors, to investigate such details as the buyer desires validated. This vessel is offered subject to prior sale, price change, or withdrawal without notice.

Exclusions

Owner's personal belongings.

Disclaimer

The Company offers the details of this vessel or yacht in good faith but cannot guarantee or warrant the accuracy of this information nor warrant the condition of the vessel. A buyer should instruct his representatives, agents, or his surveyors, to investigate such details as the buyer

desires validated. This vessel or yacht is offered subject to prior sale, price change, or withdrawal without notice.

PHOTOS

64' Hatteras starboard profile



64' Hatteras port forward profile



64' Hatteras port aft profile



64' Hatteras starboard aft profile



64' Hatteras forward profile



64' Hatteras anchor windlass



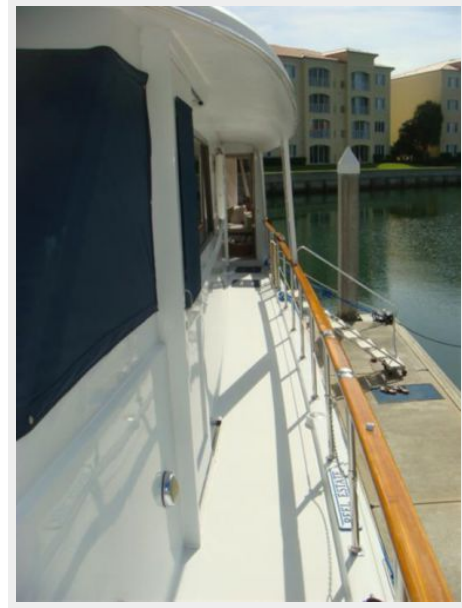
64' Hatteras foredeck



64' Hatteras foredeck aft



64' Hatteras port side deck photo1



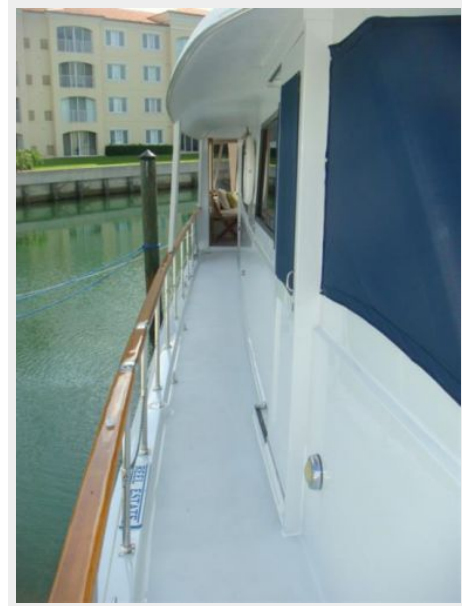
64' Hatteras foredeck benchseat



64' Hatteras port side deck photo2



64' Hatteras starboard side deck photo1



64' Hatteras starboard side deck photo2



64' Hatteras flybridge forward



64' Hatteras flybridge aft



64' Hatteras flybridge helm photo1



64' Hatteras flybridge helm photo2



64' Hatteras flybridge helm electronics



64' Hatteras flybridge helmseats



64' Hatteras flybridge port seating



64' Hatteras flybridge BBQ grill



64' Hatteras flybridge starboard seating



64' Hatteras tender photo1



64' Hatteras tender photo2



64' Hatteras tender davit



64' Hatteras aftdeck photo1



64' Hatteras aftdeck photo2



64' Hatteras aftdeck forward



64' Hatteras aftdeck port



64' Hatteras aftdeck starboard



64' Hatteras swimplatform



64' Hatteras salon forward



64' Hatteras salon aft



64' Hatteras salon port



64' Hatteras salon port aft



64' Hatteras salon starboard



64' Hatteras galley



64' Hatteras galley forward



64' Hatteras galley aft



64' Hatteras galley starboard



64' Hatteras pilothouse forward



64' Hatteras pilothouse aft



64' Hatteras pilothouse port



64' Hatteras pilothouse starboard



64' Hatteras pilothouse helm photo1



64' Hatteras pilothouse helm photo2



64' Hatteras pilothouse-flybridge stairs



64' Hatteras master stateroom



64' Hatteras master stateroom port



64' Hatteras master stateroom starboard



64' Hatteras master stateroom head



64' Hatteras master stateroom tub-shower



64' Hatteras port guest stateroom



64' Hatteras starboard guest stateroom



64' Hatteras guest head



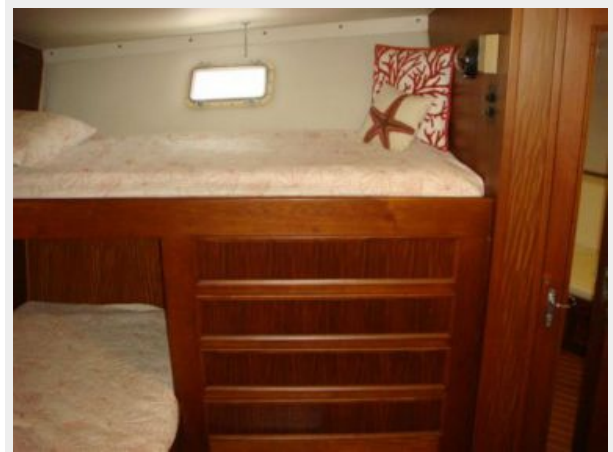
64' Hatteras forward guest stateroom



64' Hatteras forward guest stateroom aft



64' Hatteras forward guest stateroom port



64' Hatteras forward guest stateroom starboard



64' Hatteras forward guest stateroom head photo1



64' Hatteras forward guest stateroom head photo2



64' Hatteras forward guest stateroom shower



64' Hatteras washer-dryer



64' Hatteras engine room forward



64' Hatteras engine room aft



64' Hatteras engine room port



64' Hatteras engine room starboard



64' Hatteras port main engine



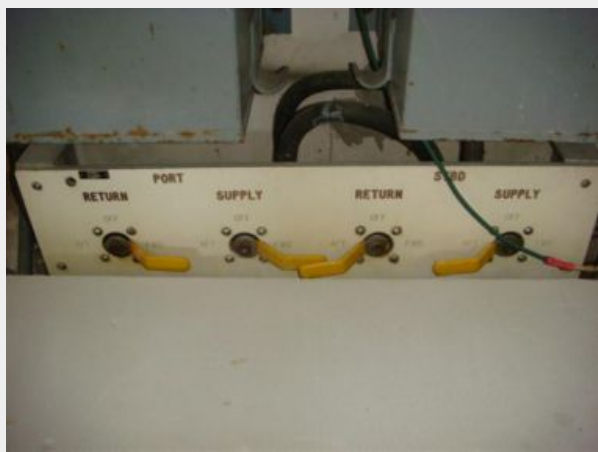
64' Hatteras port main engine exhaust



64' Hatteras starboard main engine



64' Hatteras fuel manifold



64' Hatteras Racor fuel filters



64' Hatteras stabilizer system



64' Hatteras electrical panel



64' Hatteras battery charger1



64' Hatteras battery charger2



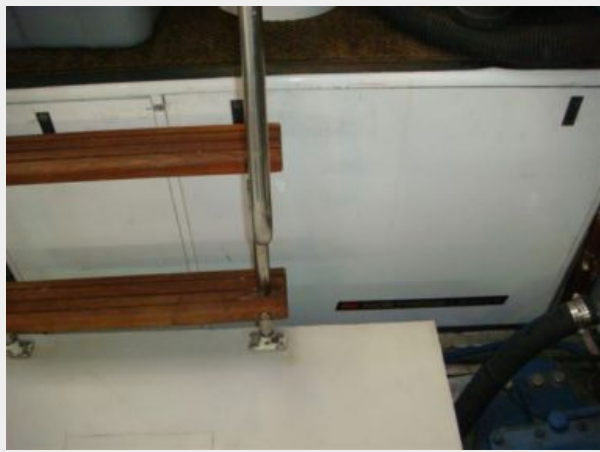
64' Hatteras battery charger3



64' Hatteras battery switches



64' Hatteras port generator sound box



64' Hatteras port generator



64' Hatteras starboard generator



64' Hatteras port generator



CONTACTS

Andrey Shestakov, leading yacht broker of the sales department of Shestakov Yacht Sales Inc. Shestakov Yacht Sales Inc., the official representative of the Miami/Fort Lauderdale FL headquarters.

Contact details

Email: andrey@shestakovyachtsales.com

Web: shestakovyachtsales.com/en/

Telephones

USA: +1(954)274-4435

Office hours

Monday – Saturday: **9:00 - 21:00** EDT

Sunday: **closed**

Address



Harbour Towne Marina, 850 NE 3rd St,
STE 213, Dania, FL 33004